

Flight Procedures Cover Page	Task Action: FLIGHT CHECK	Task Type: IAP	Estimated Chart Date: 06/12/2025	APWS Task ID: 7C9A41E0131C4B9292255C326A0090D3	APWS Project ID: 46DB6CBDD5404524B0CA829443C5EF40
Procedure: LOC RWY 4 AMDT 12	Enroute: NO	Specialist: Owens, Westley	Agreement Number:		
Airport ID: PAHO	Airport City: HOMER	State: AK			
Facility ID:	Facility Type:	Flight Inspection Remark Type: Hold FC Slot			

Procedure Comments:

PENDING DATA USED FOR PAHO AIRPORT AND RWY.
ACTIVE DATA USED FOR HOM VOR/DME AND (I-HOM LOC/DME)

FAF CHANGED AND SDF ADDED IN FINAL PER FPT REQUEST.
NEW FEEDERS ADDED. PT DELETED AND REPLACE WITH HILPT AT IF/IAF.
LOWER STRAIGHT IN MINS ADDED WITH FPT CONCURRENCE.

CONTACT: ERIC SUSKI 405-954-7331.

THIS IS A CORRECTED COPY OF THE FORM APPROVED ON 07/08/2025
TERMIANL ROUTES - REMOVED DISTANCES FROM ELDOH/HOM 19.50 DME CCW TO ZANOV/I-HOM 17.28 DME &
KOMNA/HOM 19.50 DME CW TO ZAPOT/HOM 19.50 DME &
ZAPOT/HOM 19.50 DME CW TO ZANOV/I-HOM 17.28 DME.

QUALITY
33
CHECKED

QUALITY
10
CHECKED

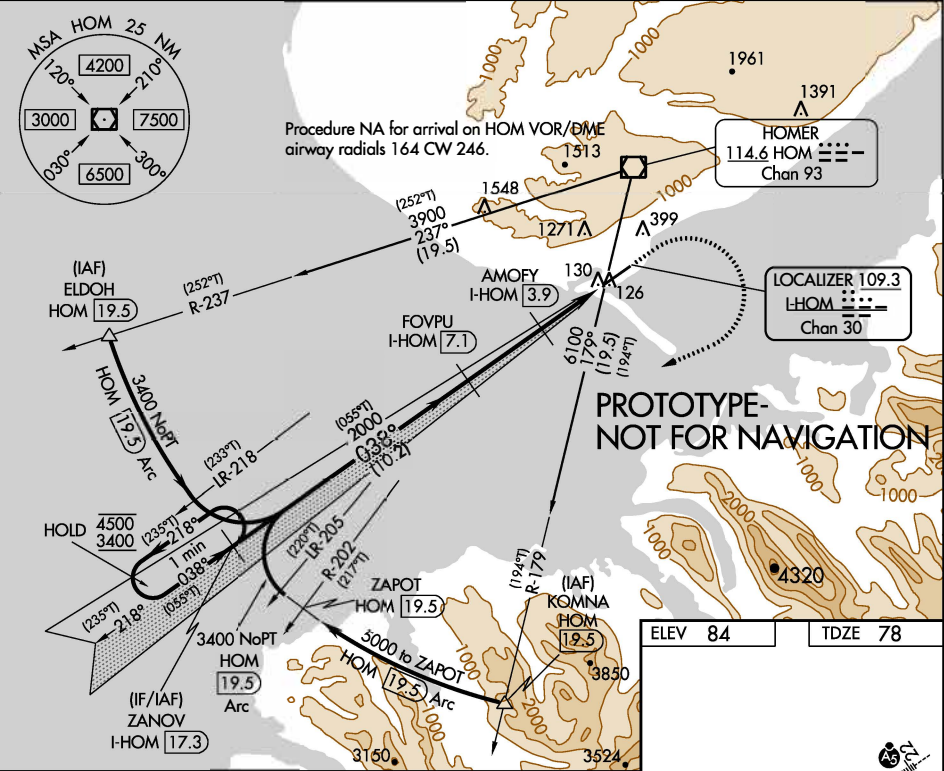
LOC/DME I-HOM 109.3 Chan 30	APP CRS 038°	Rwy Idg TDZE Apt Elev	6701 78 84
--	------------------------	-----------------------------	---------------------------------------

LOC RWY 4

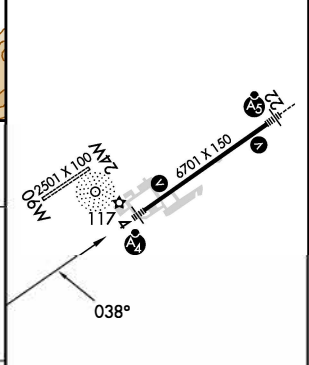
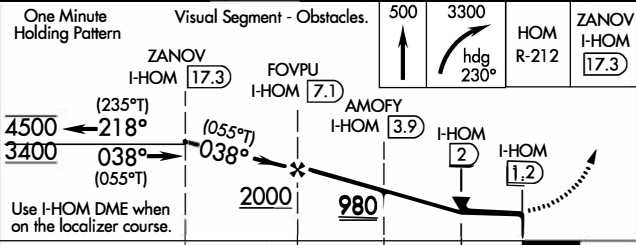
HOMER (HOM)(PAHO)

DME required.	MALSF 	MISSED APPROACH: Climb to 500 then climbing right turn to 3400 on heading 230° and on HOM VOR/DME R-212 to ZANOV/I-HOM 17.3 DME and hold.
⚠ Circling NA northwest of Rwy 4-22. Inop table does not apply. ⚠ Circling NA to waterways 6W and 24W.		

AFIS 135.65	ANCHORAGE CENTER 125.9 270.3	HOMER RADIO 123.6 (CTAF) 0	UNICOM 122.7 123.0 123.05
-----------------------	--	--------------------------------------	-------------------------------------



ELEV 84	TDZE 78
---------	---------



CATEGORY	A	B	C	D
S-LOC 4	380-1 302 (300-1)			
CIRCLING	500-1 416 (500-1)	540-1 456 (500-1)	540-1½ 456 (500-1½)	740-2¼ 656 (700-2¼)

HIRL Rwy 4-22 0

LOC/DME I-HOM 109.3 Chan 30	APP CRS 038°	Rwy Idg TDZE Apt Elev	6701 78 84
---	------------------------	-----------------------------	---------------------------------------

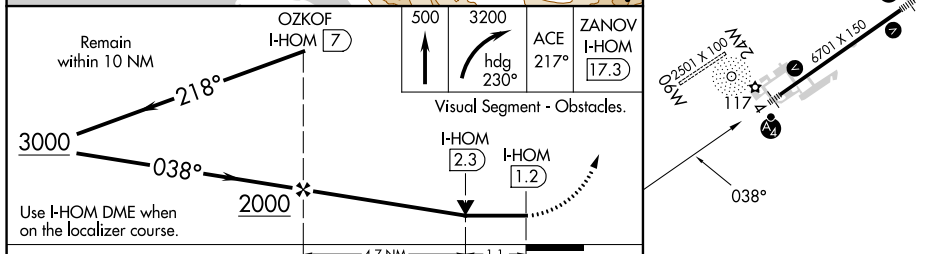
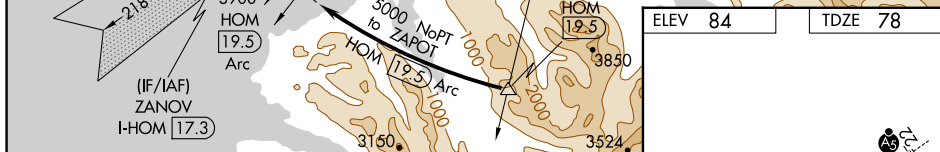
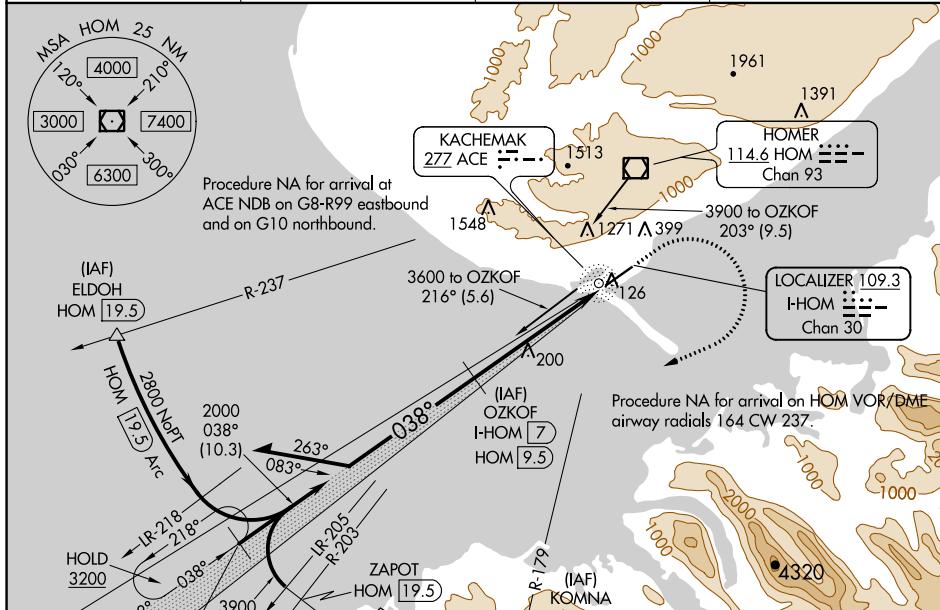
OLD

LOC RWY 4 HOMER (HOM)(PAHO)

ADF or DME required for procedure entry. DME required.

MALSF MISSED APPROACH: Climb to 500 then climbing right turn to 3200 on heading 230° and on ACE NDB bearing 217° to ZANOV/I-HOM 17.3 DME and hold.

AFIS 135.65	ANCHORAGE CENTER 125.9 270.3	HOMER RADIO 123.6 (CTAF)	UNICOM 122.7 123.0 123.05
-----------------------	--	------------------------------------	-------------------------------------



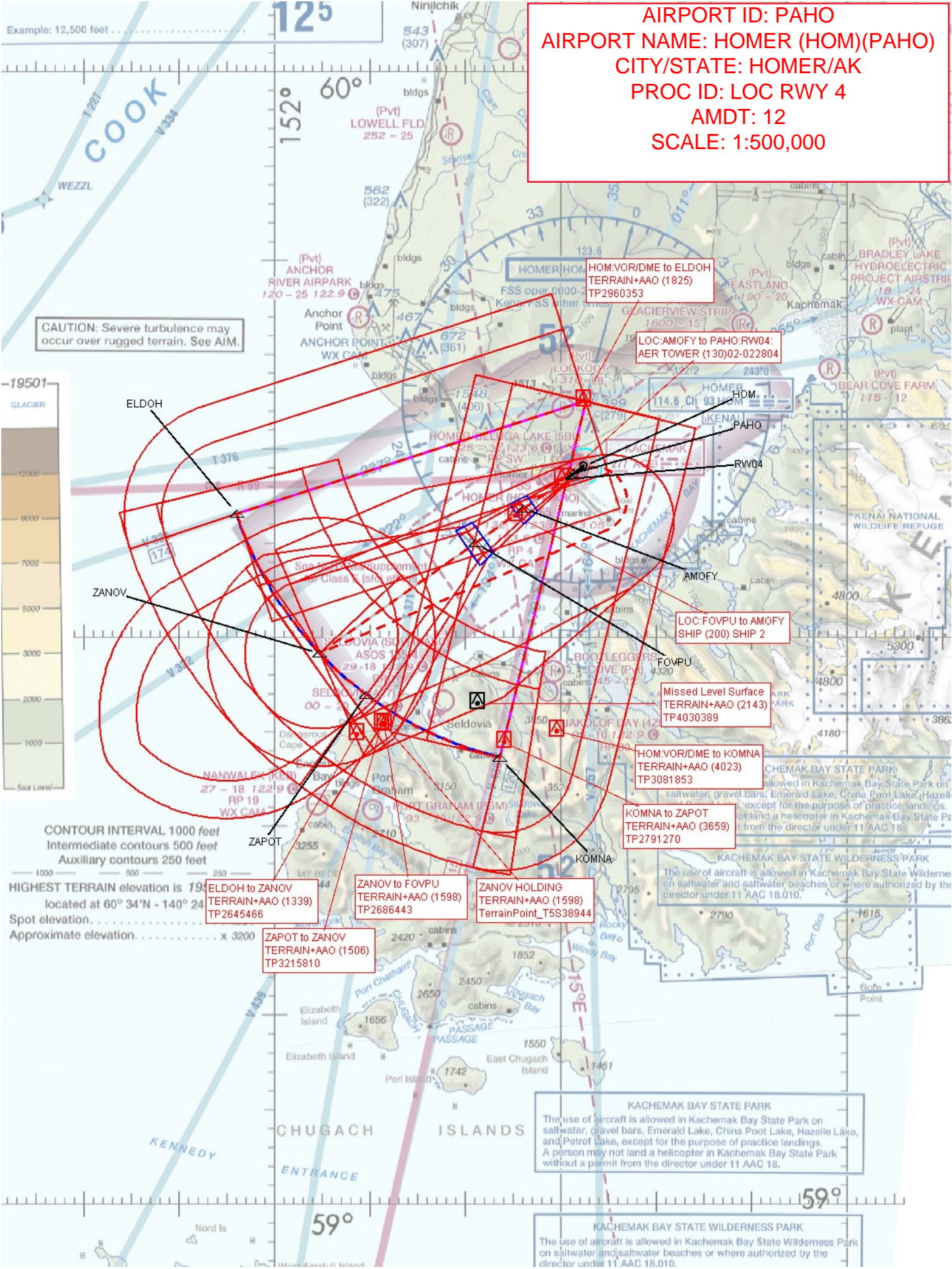
CATEGORY	A	B	C	D
S-LOC 4	460-1 382 (400-1)			
C CIRCLING	500-1 416 (500-1)	540-1 456 (500-1)	540-1½ 456 (500-1½)	760-2¼ 676 (700-2¼)

HIRL Rwy 4-22

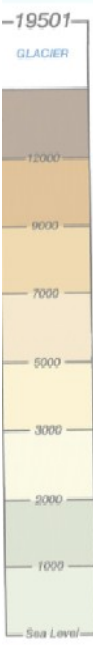
AK, 25 JAN 2024 to 21 MAR 2024

AK, 25 JAN 2024 to 21 MAR 2024

AIRPORT ID: PAHO
AIRPORT NAME: HOMER (HOM)(PAHO)
CITY/STATE: HOMER/AK
PROC ID: LOC RWY 4
AMDT: 12
SCALE: 1:500,000



CAUTION: Severe turbulence may occur over rugged terrain. See AIM.



ELDOH to ZANOV
 TERRAIN+AAO (1339)
 TP2645466

ZANOV to FOVPU
 TERRAIN+AAO (1598)
 TP2686443

ZANOV HOLDING
 TERRAIN+AAO (1598)
 TerrainPoint_T5S38944

ZAPOT to ZANOV
 TERRAIN+AAO (1506)
 TP3215810

Missed Level Surface
 TERRAIN+AAO (2143)
 TP4030389

HOM.VOR/DME to KOMNA
 TERRAIN+AAO (4023)
 TP3081853

KOMNA to ZAPOT
 TERRAIN+AAO (3659)
 TP2791270

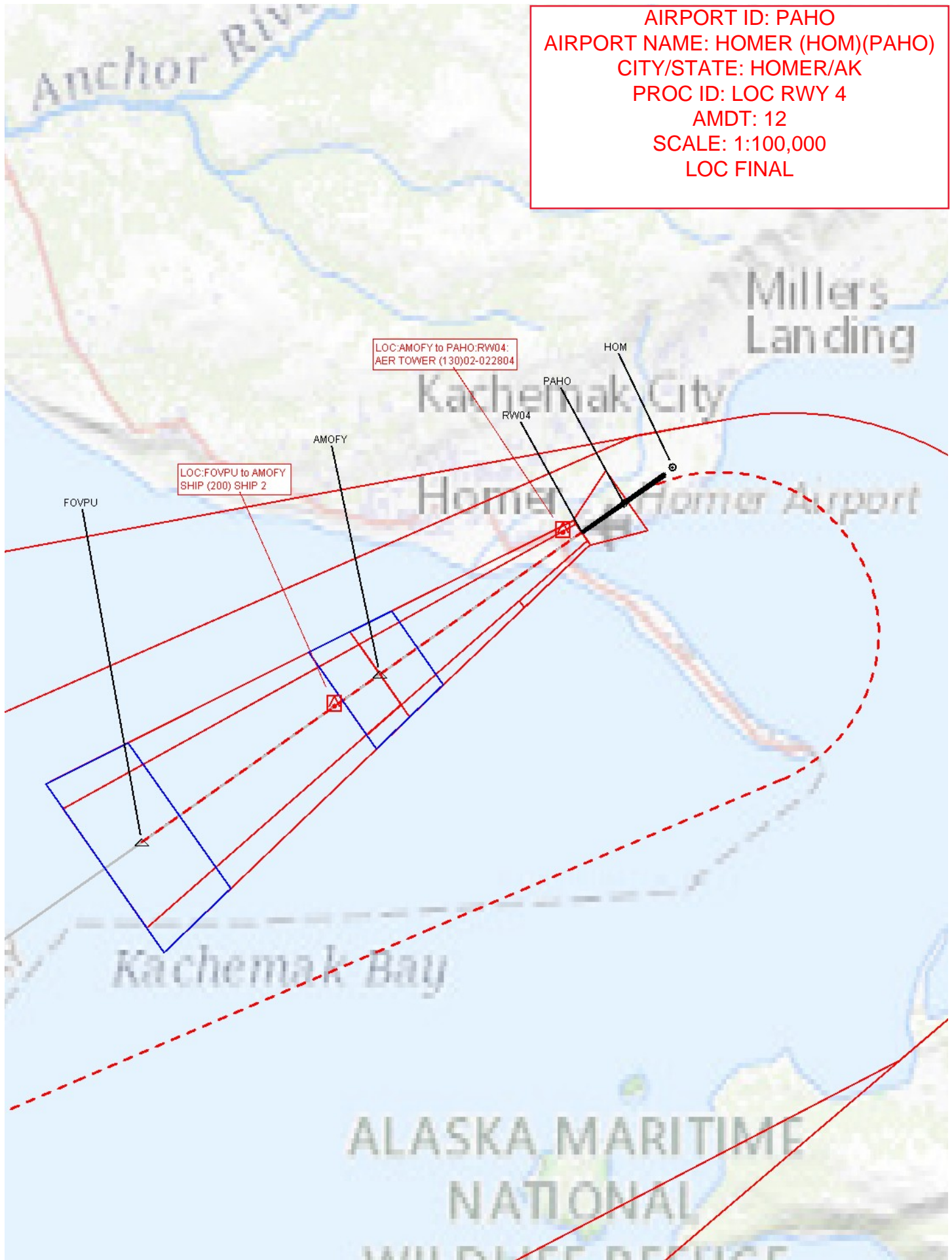
HOM.VOR/DME to ELDHO
 TERRAIN+AAO (1825)
 TP2960353

LOC:AMOFY to PAHO:RW04
 AER TOWER (130)02-022804

LOC:FOVPU to AMOFY
 SHIP (200) SHIP 2

KACHEMAK BAY STATE PARK
 The use of aircraft is allowed in Kachemak Bay State Park on saltwater, gravel bars, Emerald Lake, China Pool Lake, Hazelle Lake, and Patof Lake, except for the purpose of practice landings. A person may not land a helicopter in Kachemak Bay State Park without a permit from the director under 11 AAC 18.

KACHEMAK BAY STATE WILDERNESS PARK
 The use of aircraft is allowed in Kachemak Bay State Wilderness Park on saltwater and saltwater beaches or where authorized by the director under 11 AAC 18.010.



AIRPORT ID: PAHO
AIRPORT NAME: HOMER (HOM)(PAHO)
CITY/STATE: HOMER/AK
PROC ID: LOC RWY 4
AMDT: 12
SCALE: 1:100,000
LOC FINAL

LOC:FOVPU to AMOFY
SHIP (200) SHIP 2

LOC:AMOFY to PAHO:RW04:
AER TOWER (130)02-022804

FOVPU

AMOFY

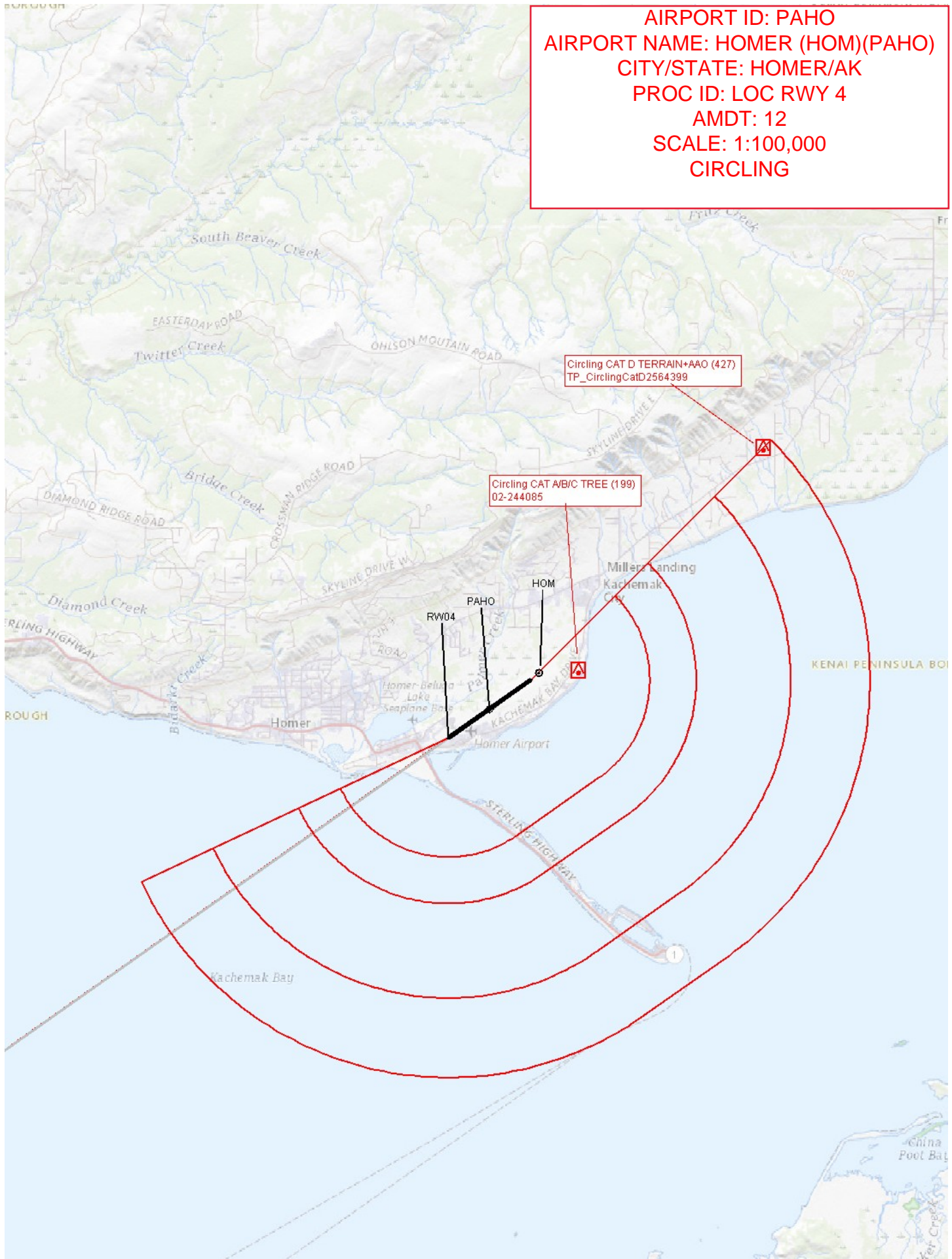
PAHO

HOM

RW04

Kachemak Bay

ALASKA MARITIME
NATIONAL
WILDLIFE REFUGE



AIRPORT ID: PAHO
AIRPORT NAME: HOMER (HOM)(PAHO)
CITY/STATE: HOMER/AK
PROC ID: LOC RWY 4
AMDT: 12
SCALE: 1:100,000
CIRCLING

Circling CAT D TERRAIN+AAO (427)
TP_CirclingCatD2564399

Circling CAT A/B/C TREE (199)
02-244085

HOMER AIRPORT
RW04
PAHO
HOM

KENAI PENINSULA BOI

Kachemak Bay

China Pool Ba