

Flight Procedures Cover Page	Task Action: Abbreviated Amendment	Task Type: IAP	Estimated Chart Date: 02/20/2025	APWS Task ID: 7CE4D81C93C14477B3247B7B384977AA	APWS Project ID: D1B85FF5838C40C98F9C70838F7CA195
Procedure: ILS OR LOC RWY 16 AMDT 11D		Enroute: NO	Specialist: Wilkinson, Christopher		Agreement Number:
Airport ID: KADS			Airport City: DALLAS		State: TX
Facility ID:	Facility Type:	Flight Inspection Remark Type:			

Procedure Comments:

ACTIVE AIRNAV DATA USED FOR KADS AIRPORT. PENDING DATA USED FOR RWY 16.

REMOVED VGSI NOT COINCIDENT NOTE.

PROCESSED IAW TECHNICAL SUPPORT GROUP (AJF-17) MEMO DATED 07/07/2021 GUIDANCE FOR PROCEDURAL CHANGES REQUIRING FLIGHT INSPECTION/VALIDATION

CONTACT: JOSEPH ZEDER, (405) 954-9111.



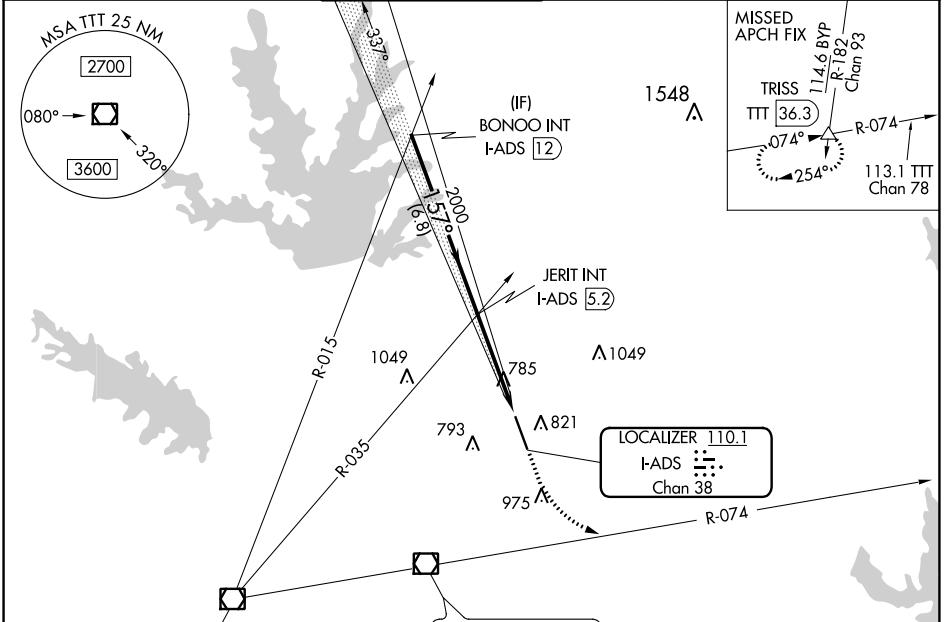
LOC/DME I-ADS 110.1 Chan 38	APP CRS 157°	Rwy Idg 6224 TDZE 644 Apt Elev 645
---	------------------------	---

OLD

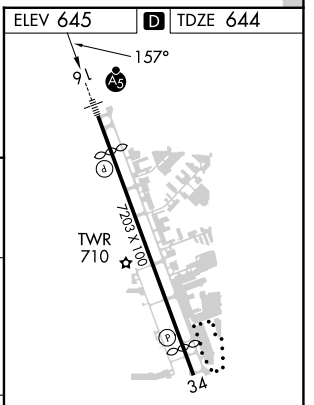
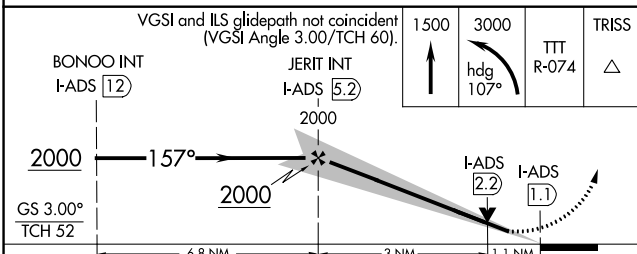
ILS or LOC RWY 16
ADDISON (ADS)

RADAR required for procedure entry.		MALSR A5	MISSED APPROACH: Climb to 1500 then climbing left turn to 3000 on heading 107° and TTT VOR/DME R-074 to TRISS INT/TTT 36.3 DME and hold.
<p>⚠ Rwy 16 helicopter visibility reduction below 1 SM NA. Inop table does not apply to S-ILS-16 all Cats, S-LOC-16 Cats A, B and C. For inop ALS, increase S-LOC-16 Cat D visibility to 1¼.</p>			

ATIS 133.4	REGIONAL APP CON 124.3 282.275	ADDISON TOWER* 126.0 (CTAF) 0 239.0	GND CON 121.6	CLNC DEL 119.55	UNICOM 122.95
----------------------	--	---	-------------------------	---------------------------	-------------------------



ELEV 645	D TDZE 644
----------	-------------------



CATEGORY	A	B	C	D
S-ILS 16		894-1	250 (300-1)	
S-LOC 16		1040-1	396 (400-1)	
C CIRCLING	1200-1	555 (600-1)	1280-1¾ 635 (700-1¾)	1400-2½ 755 (800-2½)

FAF to MAP 4.1 NM					
Knots	60	90	120	150	180
Min:Sec	4:06	2:44	2:03	1:38	1:22

SC-2, 11 JUL 2024 to 08 AUG 2024

SC-2, 11 JUL 2024 to 08 AUG 2024