

WAAS CH <b>57931</b> <b>W27A</b>	APP CRS <b>274°</b>	Rwy Ldg TDZE Apt Elev	<b>4000</b> <b>1372</b> <b>1376</b>
--	------------------------	-----------------------------	---

# RNAV (GPS) RWY 27

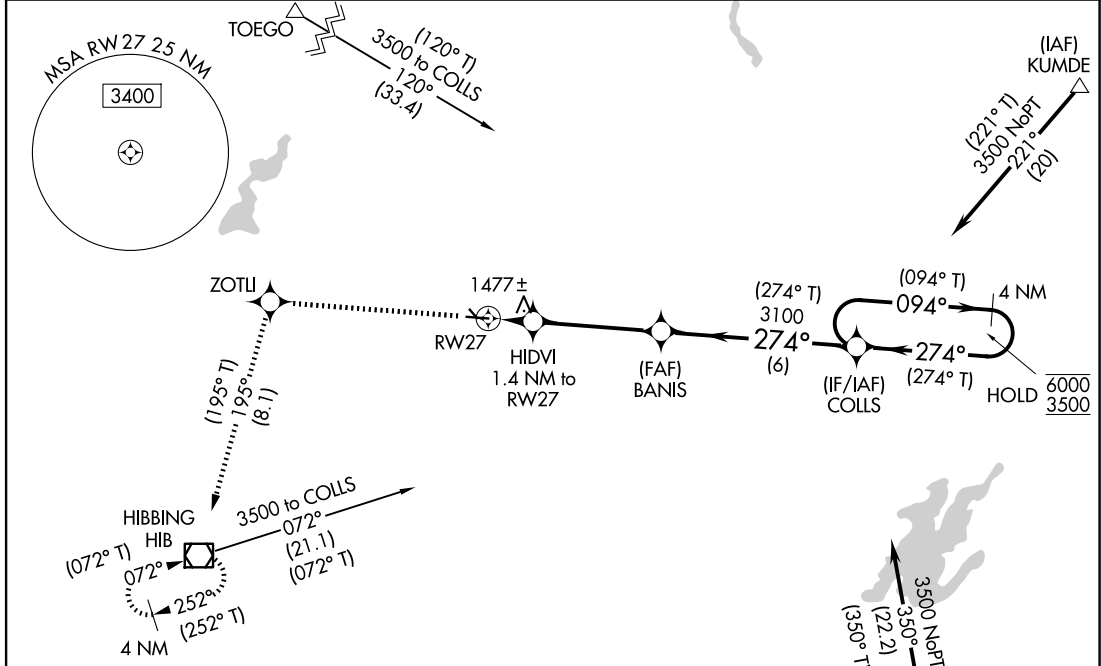
EVELETH/VIRGINIA MUNI (EVM)

RNP APCH - GPS.

**⚠** Baro-VNAV NA when using HIB altimeter setting. Rwy 27 helicopter visibility reduction below 3/4 SM NA. For uncompensated Baro-VNAV systems, LNAV/VNAV NA below -17°C or above 54°C. Circling NA to Rwy 14 and 32. When local altimeter setting not received, use HIB altimeter setting and increase LPV DA to 1670 feet, increase LNAV/VNAV DA to 1687 feet; increase all MDAs 40 feet and LNAV visibility Cat C/D 1/8 SM.

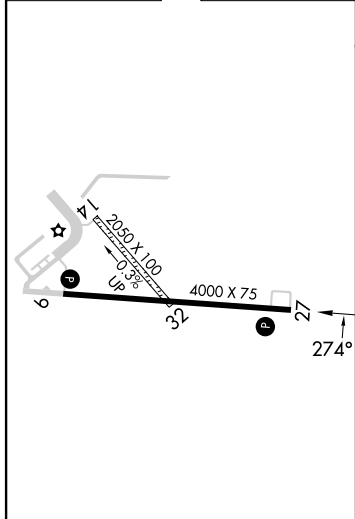
**MISSED APPROACH:**  
Climb to 3600 direct ZOTLI and on track 195° to HIB VOR/DME and hold.

AWOS-3 <b>118.825</b>	DULUTH APP CON <b>125.45 233.7</b>	UNICOM <b>122.7 (CTAF) 0</b>
--------------------------	---------------------------------------	---------------------------------



**PROTOTYPE: NOT FOR NAVIGATION**

ELEV 1376	TDZE 1372
-----------	-----------



3600	ZOTLI	HIB	4 NM Holding Pattern			
↑	fr 195°	□	COLLS	(094° T) 094° → 6000	← 274° (274° T) 3500	
	HIDVI 1.4 NM to RWY 27	BANIS 3100	(274° T) 274°	3100		
	1.4 NM	3.9 NM	6 NM			
CATEGORY	A	B	C	D		
LPV DA		1634-1	262 (300-1)			
LNAV/VNAV DA		1651-1	279 (300-1)			
LNAV MDA		1740-1	368 (400-1)			
CIRCLING	1880-1 504 (600-1)	1940-1 564 (600-1)	2260-2 3/4 884 (900-2 3/4)	2460-3 1084 (1100-3)		

MIRL Rwy 9-27 and 14-32  
REIL Rwy 27

AUTOMATED AL-5236 RNAV (GPS) RWY 27

NC-1  
5 FEB 2026  
COMPILER: CG  
REVIEWER:  
DBL CHKR:  
EFF: FIG