

Flight Procedures Cover Page	Task Action: FLIGHT CHECK	Task Type: IAP	Estimated Chart Date: 05/14/2026	APWS Task ID: 7E63934FDFC74E3EB309ACFBB5AE41DC	APWS Project ID: 5555243D714249B093BC32E3E0196474
Procedure: RNAV (GPS) RWY 27 AMDT 0D		Enroute: NO	Specialist: Johnson, Timothy		Agreement Number:
Airport ID: KEVM			Airport City: EVELETH		State: MN
Facility ID:	Facility Type:	Flight Inspection Remark Type: New FC Slot			

Procedure Comments:
RAISES LNAV MINS FROM 1720/348 TO 1740/368.

CLEARs T-NOTAM 5/3262.

CONTACT: CASEY HILL (405) 954-0624.



OLD

EVELETH, MINNESOTA

AL-5236 (FAA)

22307

WAAS CH 57931 W27A	APP CRS 274°	Rwy Idg TDZE Apt Elev	4000 1372 1376
--	------------------------	-----------------------------	---

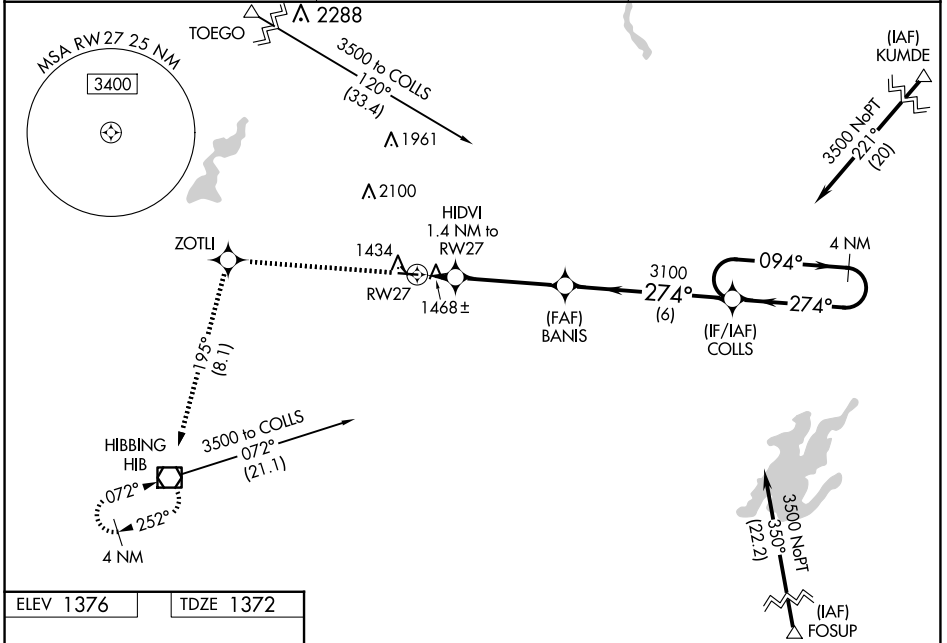
RNAV (GPS) RWY 27

EVELETH/VIRGINIA MUNI (EVM)

⚠ Baro-VNAV NA when using Hibbing altimeter setting. For uncompensated Baro-VNAV systems, procedure NA below -17°C (2°F) or above 54°C (130°F). DME/DME RNP-0.3 NA. Circling to Rwy 14 and 32 NA. Rwy 27 helicopter visibility reduction below ¾ SM NA. When local altimeter setting not received, use Hibbing altimeter setting and increase LPV DA to 1670 feet, increase LNAV/VNAV DA to 1687 feet; increase all MDAs 40 feet and increase LNAV Cat C/D visibility ½ SM.

MISSED APPROACH:
Climb to 3600 direct ZOTLI and on track 195° to HIB VOR/DME and hold.

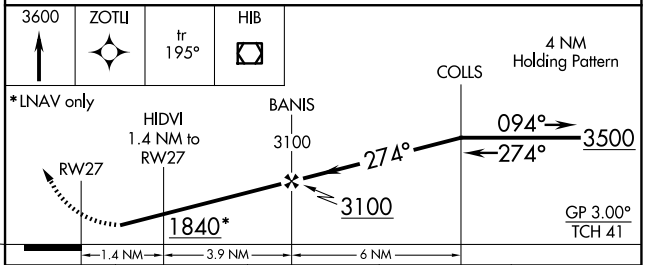
AWOS-3 118.825	DULUTH APP CON 125.45 233.7	UNICOM 122.7 (CTAF) 1
--------------------------	---------------------------------------	---------------------------------



NC-1, 02 OCT 2025 to 30 OCT 2025

NC-1, 02 OCT 2025 to 30 OCT 2025

ELEV 1376	TDZE 1372
-----------	-----------



CATEGORY	A	B	C	D
LPV DA		1634-1½	262 (300-1½)	
LNAV/VNAV DA		1651-1	279 (300-1)	
LNAV MDA		1720-1	348 (400-1)	
CIRCLING	1880-1 504 (600-1)	1940-1 564 (600-1)	2260-2¾ 884 (900-2¾)	2460-3 1084 (1100-3)

MIRL Rwy 9-27 and 14-32 1
REIL Rwy 27 1

EVELETH, MINNESOTA

Orig-C 09SEP21

47°25'N-92°30'W

EVELETH/VIRGINIA MUNI (EVM)

RNAV (GPS) RWY 27