

Flight Procedures Cover Page	Task Action: P-NOTAM	Task Type: IAP	Estimated Chart Date: 07/09/2026	APWS Task ID: 7E99C9E781E847EDBA0682020FFD0D32	APWS Project ID: 4C22C63733234A4BAEBFD0D59AE5D94D
Procedure: RNAV (GPS) RWY 18 ORIG-C		Enroute: NO	Specialist: Johnson, Timothy		Agreement Number:
Airport ID: KGLY			Airport City: CLINTON		State: MO
Facility ID:	Facility Type:	Flight Inspection Remark Type:			

Procedure Comments:

Visibility Initiative (Garmin) - Update IAP visibility minimums IAW Order 8260.3, Chapter 3, Section 3-3. Visibility Minimums.

PROCESSED IAW TECHNICAL SUPPORT GROUP (AJF-17) MEMO DATED 07/07/2021, SUBJECT: GUIDANCE FOR PROCEDURAL CHANGES REQUIRING FLIGHT INSPECTION/VALIDATION.

CONTACT: CASEY HILL (405) 954-0624.



WAAS CH 65637 W18A	APP CRS 181°	Rwy Ldg TDZE Apt Elev	5000 810 823
--	------------------------	-----------------------------	---

RNAV (GPS) RWY 18

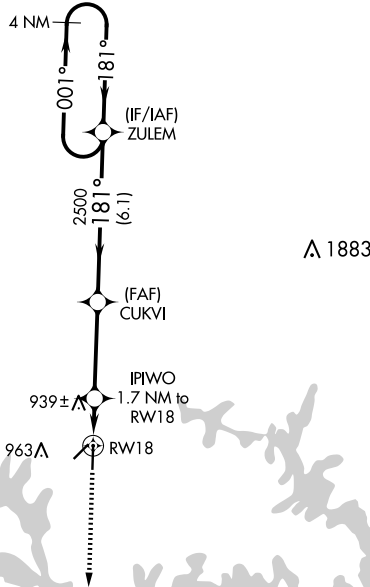
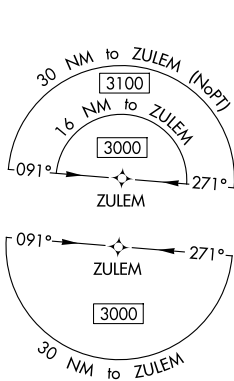
CLINTON RGNL (GLY)

RNP APCH.

▼ Baro-VNAV NA when using Whiteman AFB altimeter setting. For uncompensated Baro-VNAV systems, LNAV/VNAV NA below -16°C or above 54°C. Circling Rwy 4 NA at night. When local altimeter setting not received, use Whiteman AFB altimeter setting and increase all DA 61 feet and all MDA 80 feet, visibility LNAV Cat C/D ¾ mile, Circling Cat D ¼ mile. Rwy 18 helicopter visibility reduction below ¾ SM NA. VDP NA when using Whiteman AFB altimeter setting.

MISSED APPROACH: Climb to 3000 direct YIKUY and hold.

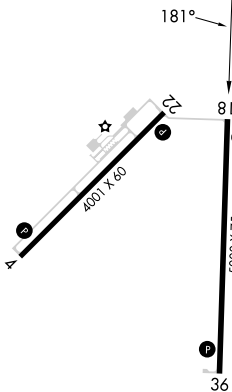
AWOS-3PT 120.475	WHITEMAN APP CON ★ 127.45	UNICOM 122.8 (CTAF) 0
----------------------------	-------------------------------------	--



NC-3, 19 FEB 2026 to 19 MAR 2026

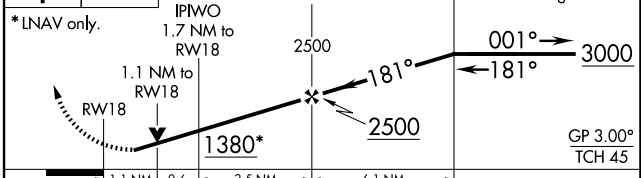
NC-3, 19 FEB 2026 to 19 MAR 2026

ELEV 823	TDZE 810
----------	----------



3000 YIKUY VGSI and RNAV glidepath not coincident (VGSI Angle 3.00/TCH 39).

ZULEM 4 NM Holding Pattern



CATEGORY	A	B	C	D
LPV DA		1060-1	250 (300-1)	
LNAV/VNAV DA		1060-1	250 (300-1)	
LNAV MDA		1200-1	390 (400-1)	
C CIRCLING	1280-1 457 (500-1)	1300-1 477 (500-1)	1340-1½ 517 (600-1½)	1480-2 657 (700-2)

MIRL Rwy 4-22 and 18-36 **0**

REIL Rwy 4, 18, 22 and 36 **0**