

Flight Procedures Cover Page	Task Action: FLIGHT CHECK	Task Type: IAP	Estimated Chart Date: 07/09/2026	APWS Task ID: 7FD07A52B0D84D48B77163B6F5A77C13	APWS Project ID: FE62B9DC45D440C3A9C903B7EA253E37
Procedure: RNAV (GPS) RWY 13 AMDT 0E		Enroute: NO	Specialist: Suppes, Jill		Agreement Number:
Airport ID: KOGA			Airport City: OGALLALA		State: NE
Facility ID:	Facility Type:	Flight Inspection Remark Type: New FC Slot			

Procedure Comments:

UTILIZED ACTIVE DATA FOR KOGA AIRPORT AND RWY 8.

CLEARs NOTAM FDC 3/3364; ADDED CHART NOTE: RWY 13 HELICOPTER VISIBILITY REDUCTION BELOW 3/4 SM NOT AUTHORIZED.

UPDATED CRC REMAINDER 24DC0B2A.

CONTACT ROBERT HAMILTON: AJV-A433, 405-954-4608.

05/06/2026



WAAS CH XXXX XXX	APP CRS 137°	Rwy Idg 3700 TDZE 3279 APT Elev 3279
------------------------	-----------------	--

RNAV (GPS) RWY 13

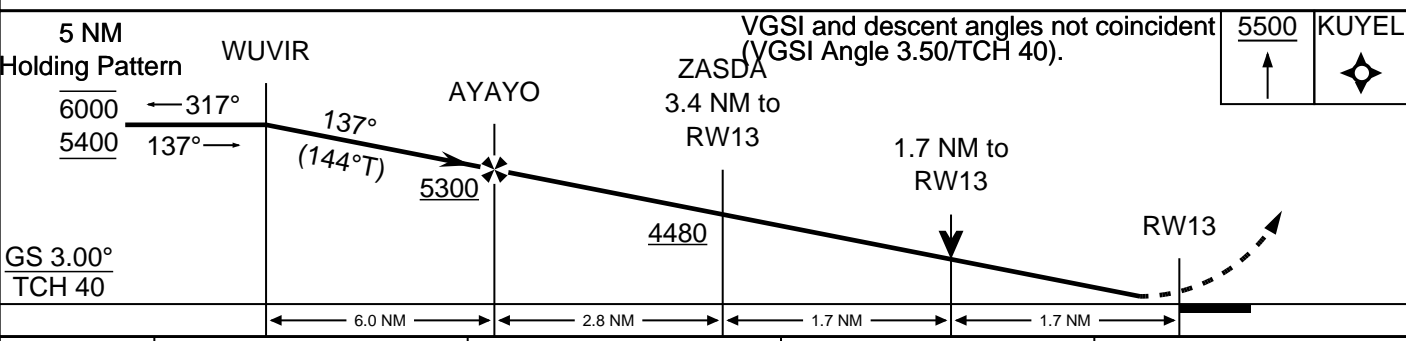
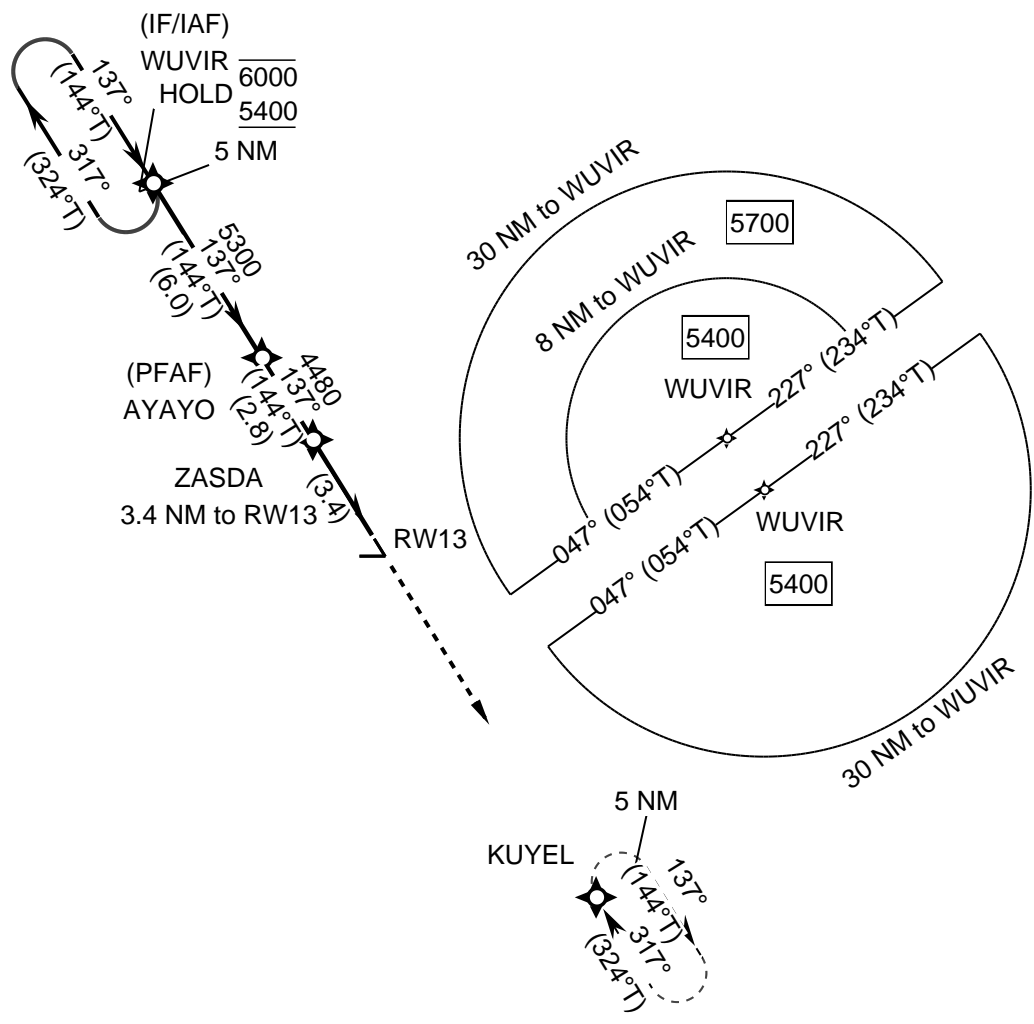
SEARLE FLD (KOGA)

RNP APCH - GPS.

MISSED APPROACH: CLIMB TO 5500 DIRECT KUYEL AND HOLD.

RWY 13 HELICOPTER VISIBILITY REDUCTION BELOW 3/4 SM NOT AUTHORIZED. VDP NAT WHEN USING IML ALTIMETER SETTING. WHEN LOCAL ALTIMETER SETTING NOT RECEIVED, USE IML ALTIMETER SETTING AND INCREASE ALL MDAS 100 FEET AND LP VISIBILITY 1/4 SM.

PROTOTYPE-NOT FOR NAVIGATION



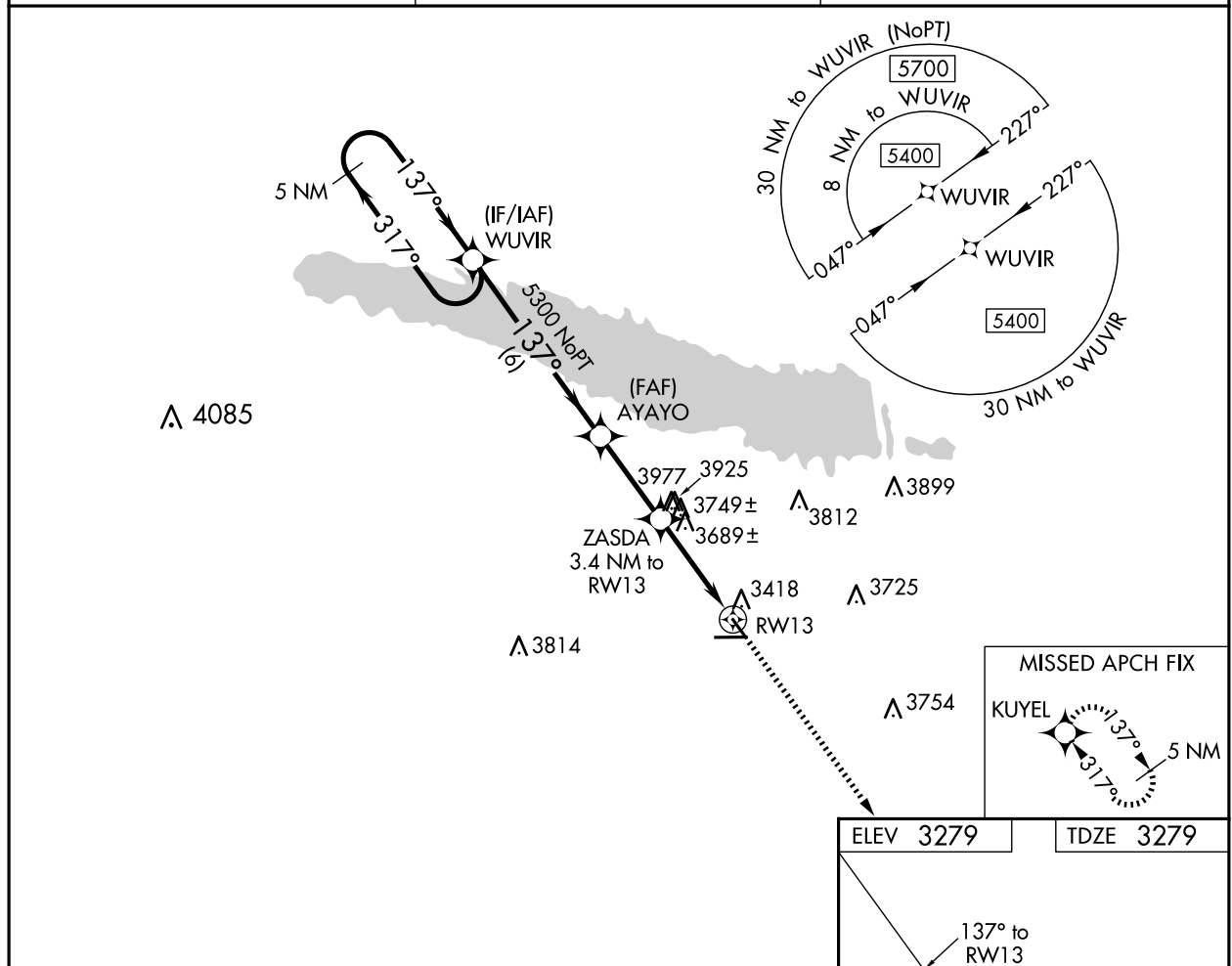
CATEGORY	A	B	C	D
LP	3940-1 661			NA
LNAV	4360-1 1/4 1081	4360-1 1/2 1081	NA	
CIRCLING	4360-1 1/4 1081	4360-1 1/2 1081	NA	

WAAS CH 93531 W13A	APP CRS 137°	Rwy Idg TDZE Apt Elev	3700 3279 3279
--	------------------------	-----------------------------	---

OLD

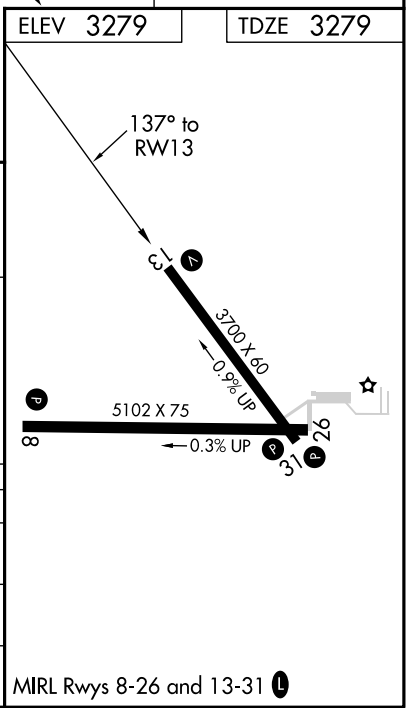
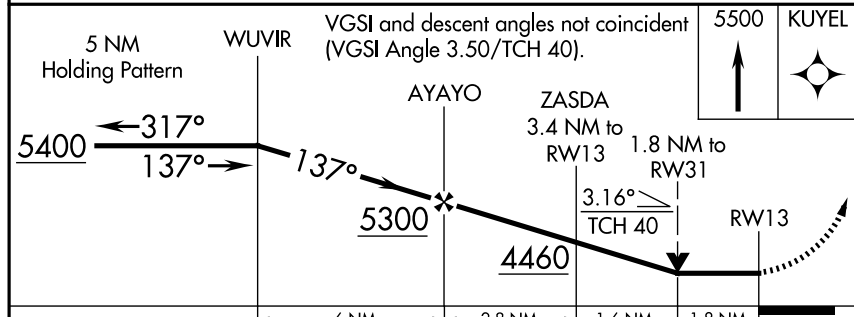
RNAV (GPS) RWY 13
SEARLE FLD (OGA)

RNP APCH.		MISSED APPROACH: Climb to 5500 direct KUYEL and hold.
<p>▼ When local altimeter setting not received, use Imperial altimeter setting and increase all MDA 100 feet, increase LP, LNAV and Circling Cat B visibility to 1¼.</p> <p>▲ VDP NA with Imperial altimeter setting.</p>		
AWOS-3 121.275	DENVER CENTER 132.7 397.85	UNICOM 122.8 (CTAF) 0



NC-2, 25 DEC 2025 to 22 JAN 2026

NC-2, 25 DEC 2025 to 22 JAN 2026



ELEV 3279		TDZE 3279	
CATEGORY	A	B	D
LP MDA	3940-1	661 (700-1)	NA
LNAV MDA	4000-1	721 (800-1)	NA
CIRCLING	4000-1	721 (800-1)	NA

MIRL Rwy 8-26 and 13-31 0