

Flight Procedures Cover Page	Task Action: P-NOTAM	Task Type: IAP	Estimated Chart Date: 07/09/2026	APWS Task ID: 818304705549479FB7F8110AA64648A8	APWS Project ID: 297DBAC55E0C402885D1FEA3BA84F75B
Procedure: RNAV (GPS) RWY 35 AMDT 1B		Enroute: NO	Specialist: Johnson, Timothy		Agreement Number:
Airport ID: KBPG			Airport City: BIG SPRING		State: TX
Facility ID:	Facility Type:	Flight Inspection Remark Type:			

Procedure Comments:

Visibility Initiative (Garmin) - Update IAP visibility minimums IAW Order 8260.3, Chapter 3, Section 3-3. Visibility Minimums.

PROCESSED IAW TECHNICAL SUPPORT GROUP (AJF-17) MEMO DATED 07/07/2021, SUBJECT: GUIDANCE FOR PROCEDURAL CHANGES REQUIRING FLIGHT INSPECTION/VALIDATION.

CONTACT: CASEY HILL (405) 954-0624.

QUALITY
6 SN 2/26/26
CHECKED

QUALITY
29
CHECKED

WAAS CH 99418 W35A	APP CRS 355°	Rwy Idg TDZE Apt Elev	8803 2563 2573
--	------------------------	-----------------------------	---

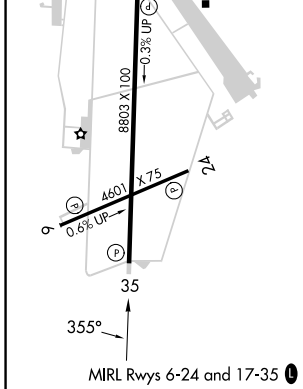
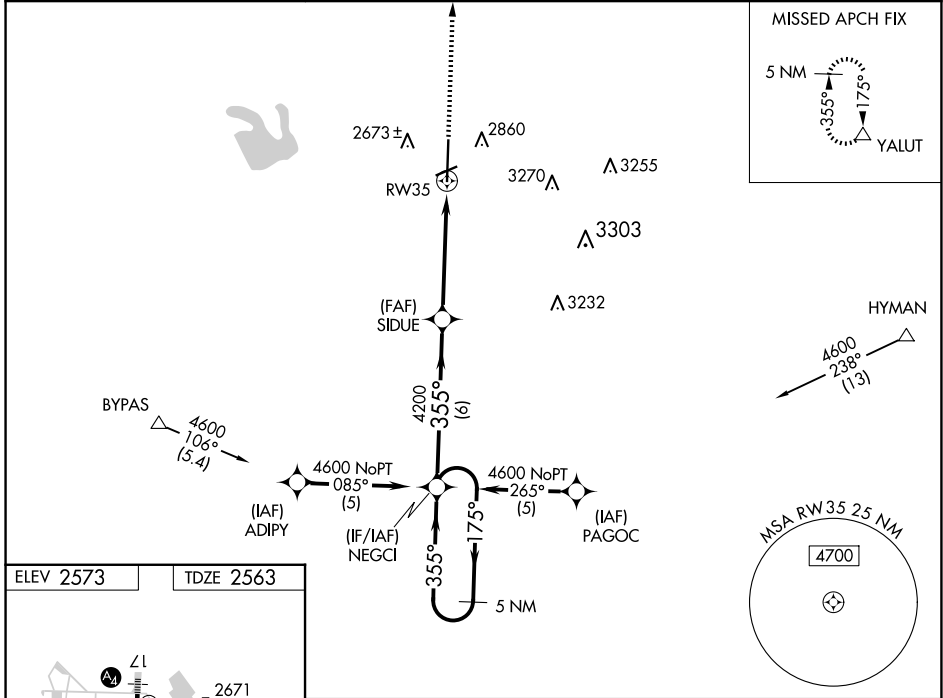
RNAV (GPS) RWY 35
BIG SPRING/MC MAHON-WRINKLE (BPG)

RNP APCH.

⚠ Baro-VNAV NA when using Midland Intl Air and Space Port altimeter setting. For uncompensated Baro-VNAV systems, LNAV/VNAV NA below -20°C or above 43°C. VDP NA with Midland Intl Air and Space Port altimeter setting. When local altimeter setting not received, use Midland Intl Air and Space Port altimeter setting: increase all DA 130 feet and all MDA 140 feet; increase LPV all Cats visibility ¼ SM, LNAV/VNAV all Cats visibility ½ SM and LNAV Cat C and D visibility ½ SM.

MISSED APPROACH: Climb to 5200 direct YALUT and hold.

AWOS-3PT 118.025	FORT WORTH CENTER 133.7 350.2	UNICOM 122.8 (CTAF) 0
----------------------------	---	---------------------------------



5 NM Holding Pattern NEGCI		5200 YALUT	
4600 ← 175°		355° →	
GP 3.00° TCH 36		*1.5 NM to RW35	
4200		RW35	
6 NM		3.5 NM	
1.5 NM		1.5 NM	
CATEGORY	A	B	C
LPV DA	2813-1 250 (300-1)		
LNAV/VNAV DA	2979-1½ 416 (500-1½)		
LNAV MDA	3060-1 497 (500-1)	3060-1¼ 497 (500-1¼)	3060-1½ 497 (500-1½)