

Flight Procedures Cover Page	Task Action: P-NOTAM	Task Type: IAP	Estimated Chart Date: 09/03/2026	APWS Task ID: 8295CE55A0354697A099BD33E1AFB9A8	APWS Project ID: B055ACD133ED4DCCB04E1FF1794FC7BD
Procedure: RNAV (GPS) RWY 3 ORIG-C		Enroute: NO	Specialist: Johnson, Timothy		Agreement Number:
Airport ID: KROW			Airport City: ROSWELL		State: NM
Facility ID:	Facility Type:	Flight Inspection Remark Type:			

**Procedure Comments:**

Visibility Initiative (Garmin) - Update IAP visibility minimums IAW Order 8260.3, Chapter 3, Section 3-3. Visibility Minimums.

PROCESSED IAW TECHNICAL SUPPORT GROUP (AJF-17) MEMO DATED 07/07/2021, SUBJECT: GUIDANCE FOR PROCEDURAL CHANGES REQUIRING FLIGHT INSPECTION/VALIDATION.

CONTACT: CASEY HILL (405) 954-0624.

QUALITY  
6 SN 4/15/26  
CHECKED

QUALITY  
9  
CHECKED  
BEGUE

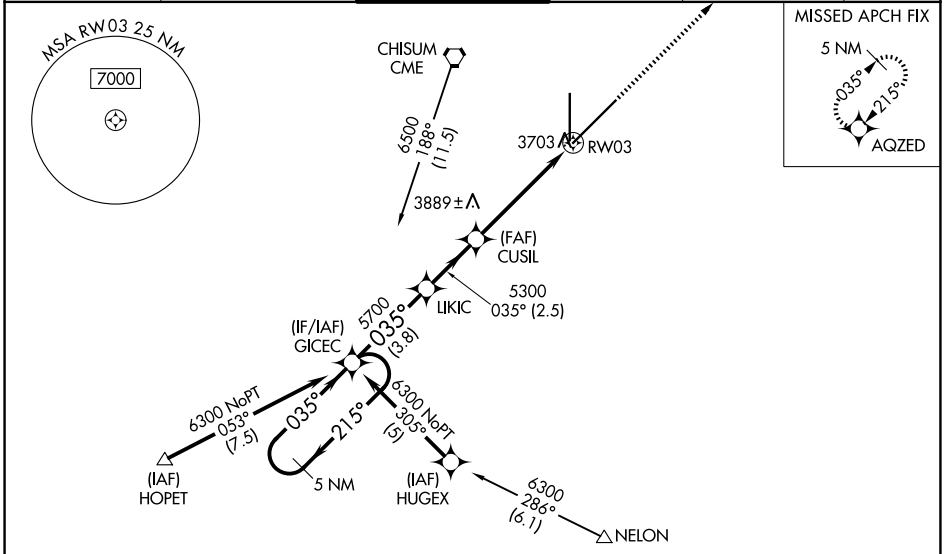
WAAS CH <b>50202</b> W03A	APP CRS <b>035°</b>	Rwy Ldg <b>13000</b> TDZE <b>3667</b> Apt Elev <b>3671</b>
---------------------------------	------------------------	--

# RNAV (GPS) RWY 3

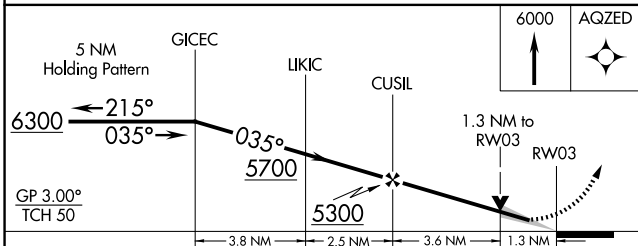
ROSWELL AIR CENTER (ROW)

RNP APCH - GPS.	<p>▼ For uncompensated Baro-VNAV systems, LNAV/VNAV NA below -22°C or above 41°C. When local altimeter setting not received, Use Artesia altimeter setting; increase LPV DA to 3997 feet and all visibilities ¼ SM; increase LNAV/VNAV DA to 4067 feet and all visibilities ½ SM; increase all MDAs 80 feet and LNAV visibility Cat C ¾ SM, Cat D ½ SM and Circling visibility Cat D ½ SM. Baro-VNAV and VDP NA when using Artesia altimeter setting.</p>	<p>MISSED APPROACH: Climb to 6000 direct AQZED and hold.</p>
<p>▲ ASR</p>		

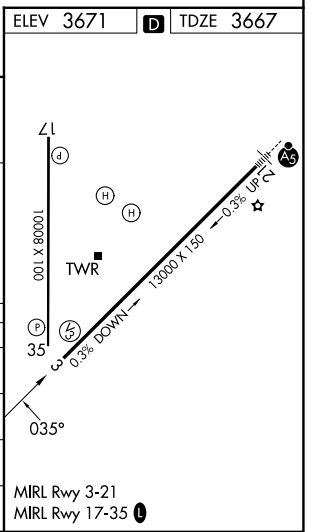
ATIS <b>128.45 306.2</b>	ROSWELL APP CON * <b>119.6 239.0</b>	ROSWELL TOWER * <b>118.5 (CTAF) 233.7</b>	GND CON <b>121.9 348.6</b>	CLNC DEL <b>132.875 282.25</b>	UNICOM <b>122.95</b>
-----------------------------	---	--	-------------------------------	-----------------------------------	-------------------------



ELEV 3671	D	TDZE 3667
-----------	---	-----------



CATEGORY	A	B	C	D
LPV DA	3917-¾		250 (300-¾)	
LNAV/VNAV DA	3987-1		320 (400-1)	
LNAV MDA	4140-1	473 (500-1)	4140-1¼ 473 (500-1¼)	4140-1½ 473 (500-1½)
CIRCLING	4140-1	469 (500-1)	4140-1½ 469 (500-1½)	4300-2 629 (700-2)



SW-1, 16 APR 2026 to 14 MAY 2026

SW-1, 16 APR 2026 to 14 MAY 2026