

Flight Procedures Cover Page	Task Action: FLIGHT CHECK	Task Type: IAP	Estimated Chart Date: 05/14/2026	APWS Task ID: 82B439F94F9C4560AFC83CC4F11A6605	APWS Project ID: 23D4A4A2FA914815A1DCE45BD53410A0
Procedure: VOR RWY 32 AMDT 5B		Enroute: NO	Specialist: Denton, Hope		Agreement Number:
Airport ID: KMLU			Airport City: MONROE		State: LA
Facility ID: MLU	Facility Type: VORTAC	Flight Inspection Remark Type: New FC Slot			

Procedure Comments:

UTILIZED ACTIVE DATA FOR KMLU AIRPORT, RUNWAYS AND MLU VORTAC.

CANCELS NOTAM FDC: 5/2964.

CONTACT CASIMIR TABAKA: AJV-A432, 405-202-7857.



VORTAC MLU 117.2 Chan 119	APP CRS 328°	Rwy Idg TDZE Apt Elev	6301 76 79
---	------------------------	-----------------------------	---------------------------------------

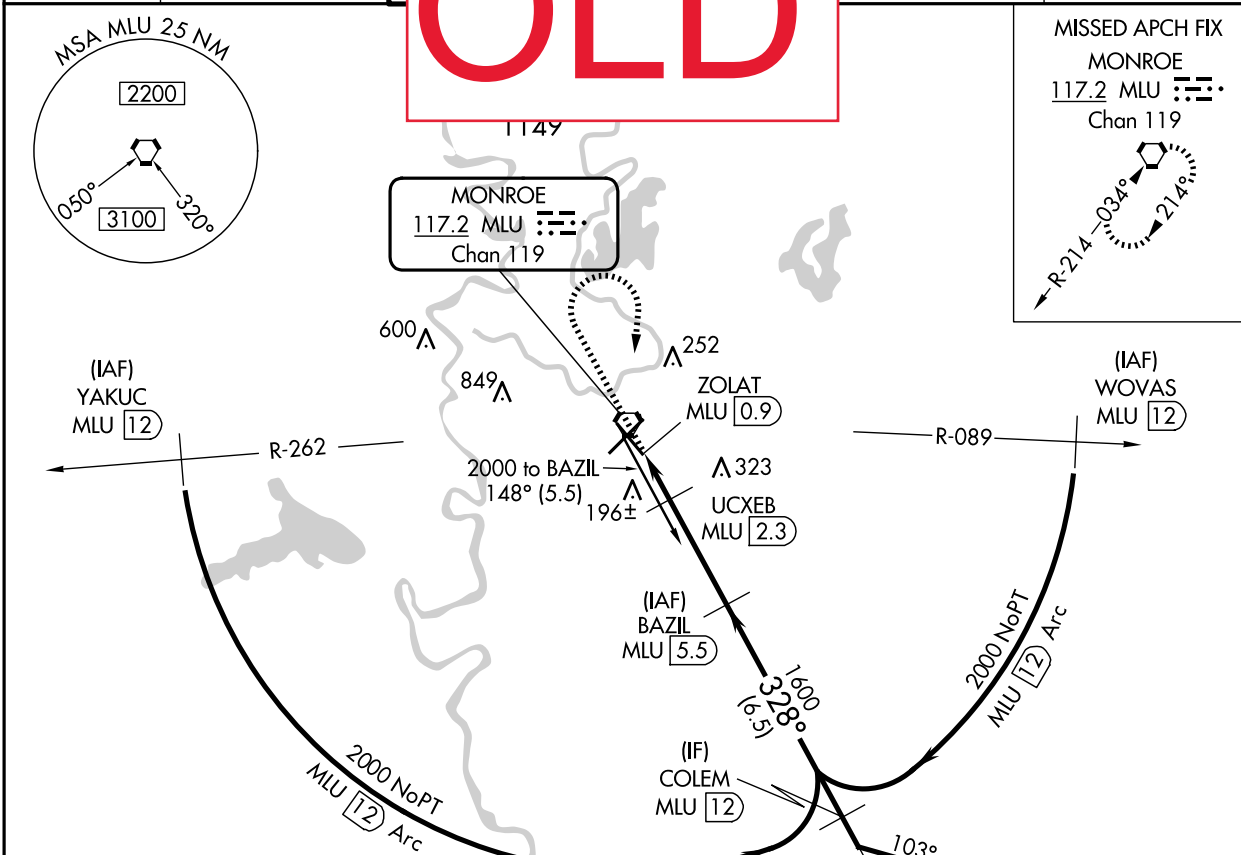
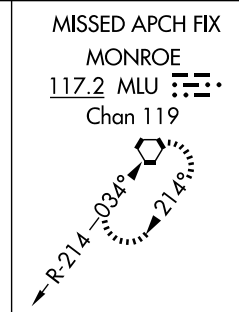
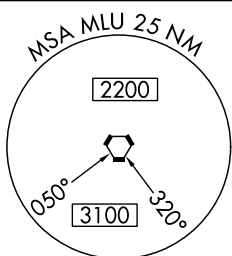
VOR RWY 32 MONROE RGNL (MLU)

DME required.

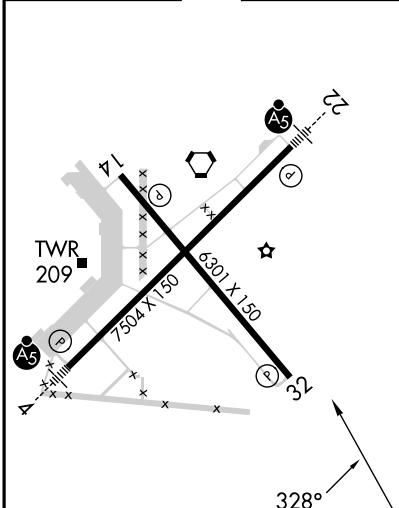
ASR Rwy 32 helicopter visibility reduction below 3/4 SM NA. Circling Rwy 14 NA at night.

MISSED APPROACH: Climb to 1800 then climbing right turn to 3000 direct MLU VORTAC and hold, continue climb-in-hold to 3000.

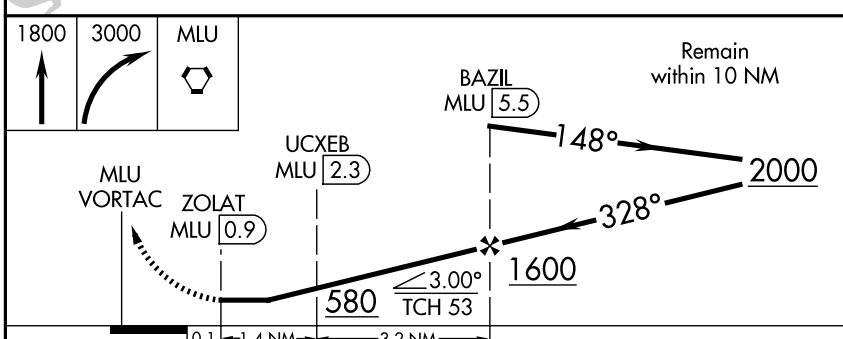
ATIS 125.05	MONROE APP CON ★ 118.15 290.475	OLD	CLNC DEL 121.65	UNICOM 122.95
-----------------------	---	------------	---------------------------	-------------------------



ELEV 79 **D** TDZE 76



REIL Rws 14 and 32
MIRL Rwy 14-32 **L**
HIRL Rwy 4-22 **L**



CATEGORY	A	B	C	D
S-32	460-1 384 (400-1)		460-1 3/8 384 (400-1 3/8)	
C CIRCLING	540-1 461 (500-1)	580-1 501 (600-1)	740-1 3/4 661 (700-1 3/4)	1160-3 1081 (1100-3)

SC-4, 30 OCT 2025 to 27 NOV 2025

SC-4, 30 OCT 2025 to 27 NOV 2025