

Flight Procedures Cover Page	Task Action: FLIGHT CHECK	Task Type: IAP	Estimated Chart Date: 10/31/2024	APWS Task ID: 82D25980AE344CCEA9074E552E8795D3	APWS Project ID: B493FF40428C40419B24DA2E8198A8CE
Procedure: ILS OR LOC RWY 29 AMDT 12		Enroute: NO	Specialist: Suppes, Jill		Agreement Number:
Airport ID: KBMI			Airport City: BLOOMINGTON/NORMAL		State: IL
Facility ID: BMI	Facility Type: ILS	Flight Inspection Remark Type: New FC Slot			

Procedure Comments:

UTILIZED ACTIVE DATA FOR:

1. KBMI AIRPORT AND RWY 29.
2. NAVAID: ILS (I-BMI).

PROCEDURE REDESIGN DUE TO PNT VORMON.

CONTACT ROBERT HAMILTON: AJV-433, 405-954-4608.

10/31/2024: THIS IS AN UPDATED COPY OF THE FORM DEVELOPED ON 07/01/2024.

12/26/2024 ADDED TO REQUIRED EFFECTIVE DATE.



LOC/DME I-BMI 110.95 Chan 46 (Y)	APP CRS 291°	Rwy Idg TDZE Apt Elev	6525 871 871
--	------------------------	-----------------------------	---

ILS or LOC RWY 29

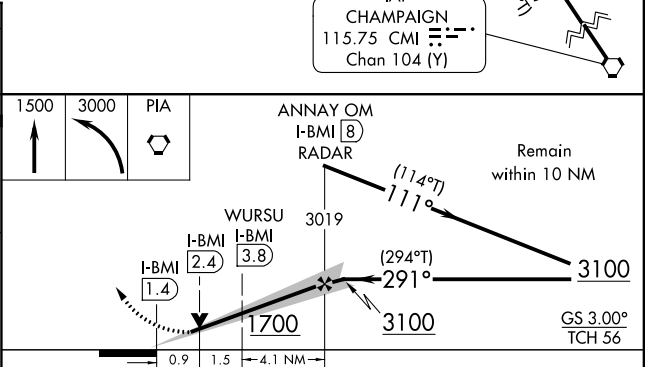
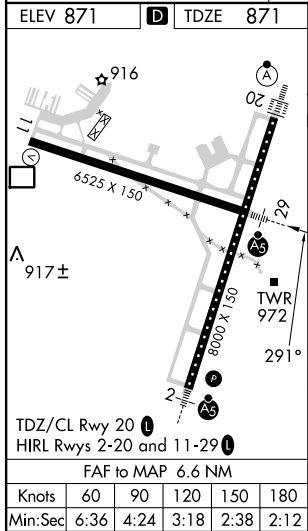
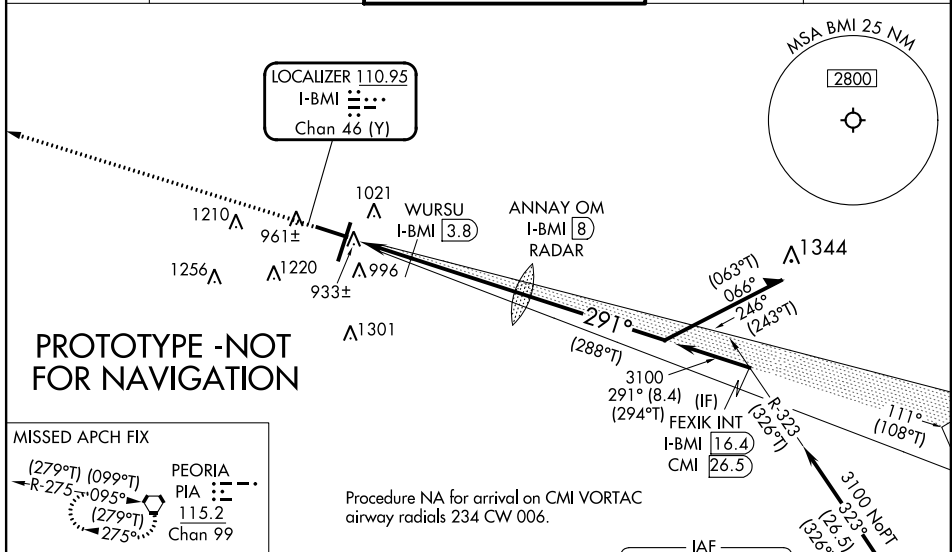
CENTRAL IL RGNL/BLOOMINGTON-NORMAL (BMI)

DME required. RADAR required for procedure entry at ANNAY OM.

⚠ VDP NA when using PIA altimeter setting. For inop ALS, increase S-LOC 29 Cats C and D visibility to RVR 5500. When local altimeter setting not received, use PIA altimeter setting: increase S-ILS 29 DA to 1187 feet; increase all MDAs 120 feet and S-LOC 29 visibility Cats C and D to RVR 5000 and Circling visibility Cats C and D ¼ SM. For inop ALS when using PIA altimeter setting: increase S-ILS 29 visibility all Cats to RVR 4500 and S-LOC 29 visibility Cats C and D to 1 ½ SM. *RVR 1800 authorized with use of FD or AP or HUD to DA (NA when using PIA altimeter setting).

MALS MISSED APPROACH: Climb to 1500 then climbing left turn to 3000 direct PIA VORTAC and hold.

ATIS 119.575	SAINT LOUIS APP CON 128.725 256.9	BLOOMINGTON TOWER * 124.6 (CTAF) 269.575	GND CON 121.65	UNICOM 122.95
------------------------	---	--	--------------------------	-------------------------



CATEGORY	A	B	C	D
S-ILS 29*	1071/24		200 (200-½)	
S-LOC 29	1240/24	369 (400-½)	1240/35	369 (400-¾)
CIRCLING	1340-1	469 (500-1)	1620-2¼ 749 (800-2¼)	1620-2½ 749 (800-2½)

OLD

BLOOMINGTON/NORMAL, ILLINOIS

AL-5058 (FAA)

24137

LOC/DME I-BMI 110.95 Chan 46 (Y)	APP CRS 291°	Rwy Idg TDZE Apt Elev	6525 871 871
---	------------------------	-----------------------------	---

ILS or LOC RWY 29

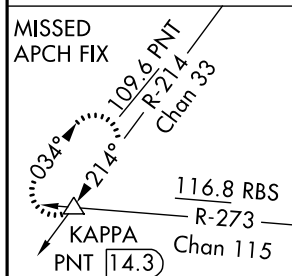
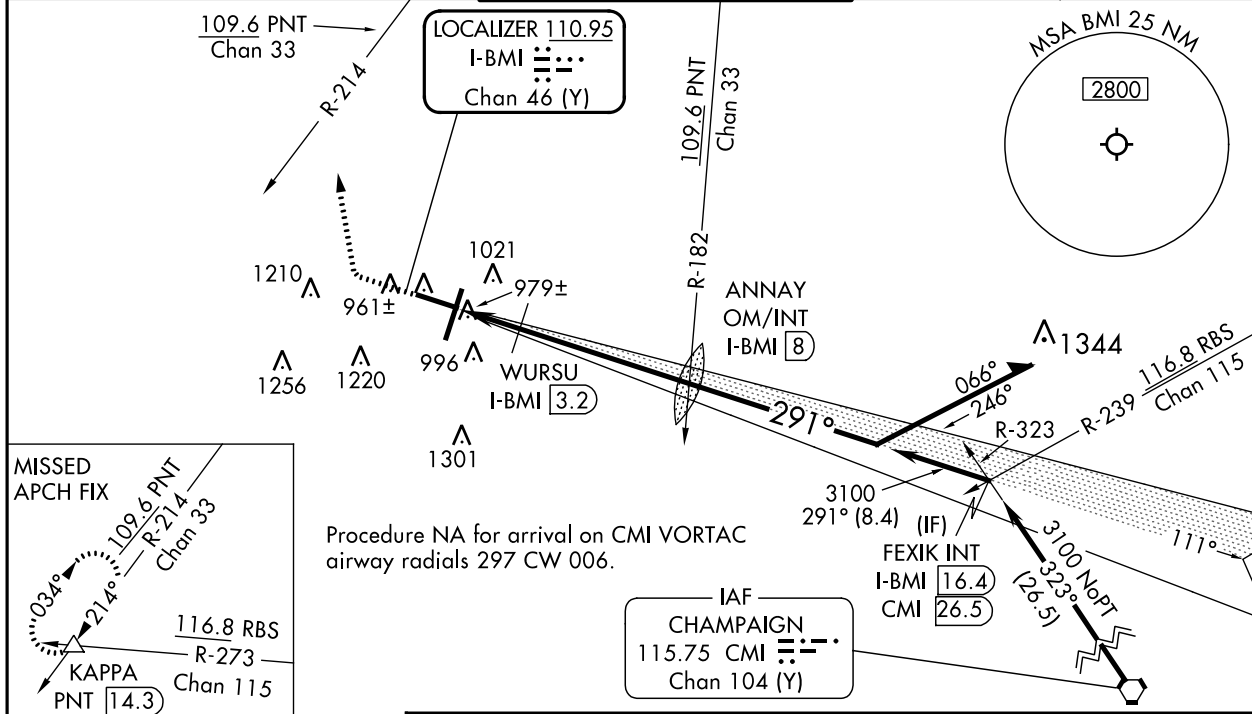
CENTRAL IL RGNL/BLOOMINGTON-NORMAL (BMI)

⚠ For inop ALS, increase S-LOC 29 Cats C and D visibility to 1 3/8 SM and WURSU fix minimums Cats C and D visibility to RVR 5500.
**RVR 1800 authorized with use of FD or AP or HUD to DA (NA when using General Downing-Peoria Intl altimeter setting).

MALSR

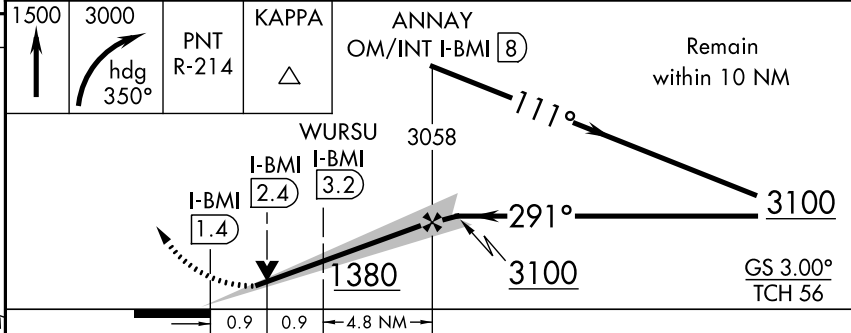
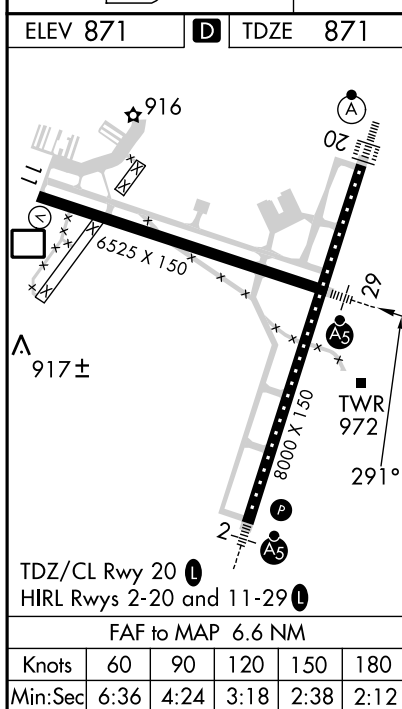
MISSED APPROACH: Climb to 1500 then climbing right turn to 3000 on heading 350° and PNT VOR/DME R-214 to KAPPA INT/PNT 14.3 DME and hold.

ATIS 135.35	SAINT LOUIS APP CON 128.725 256.9	BLOOMINGTON TOWER ★ 124.6(CTAF) 269.575	GND CON 121.65	UNICOM 122.95
-----------------------	---	--	--------------------------	-------------------------



EC-3, 13 JUN 2024 to 11 JUL 2024

EC-3, 13 JUN 2024 to 11 JUL 2024



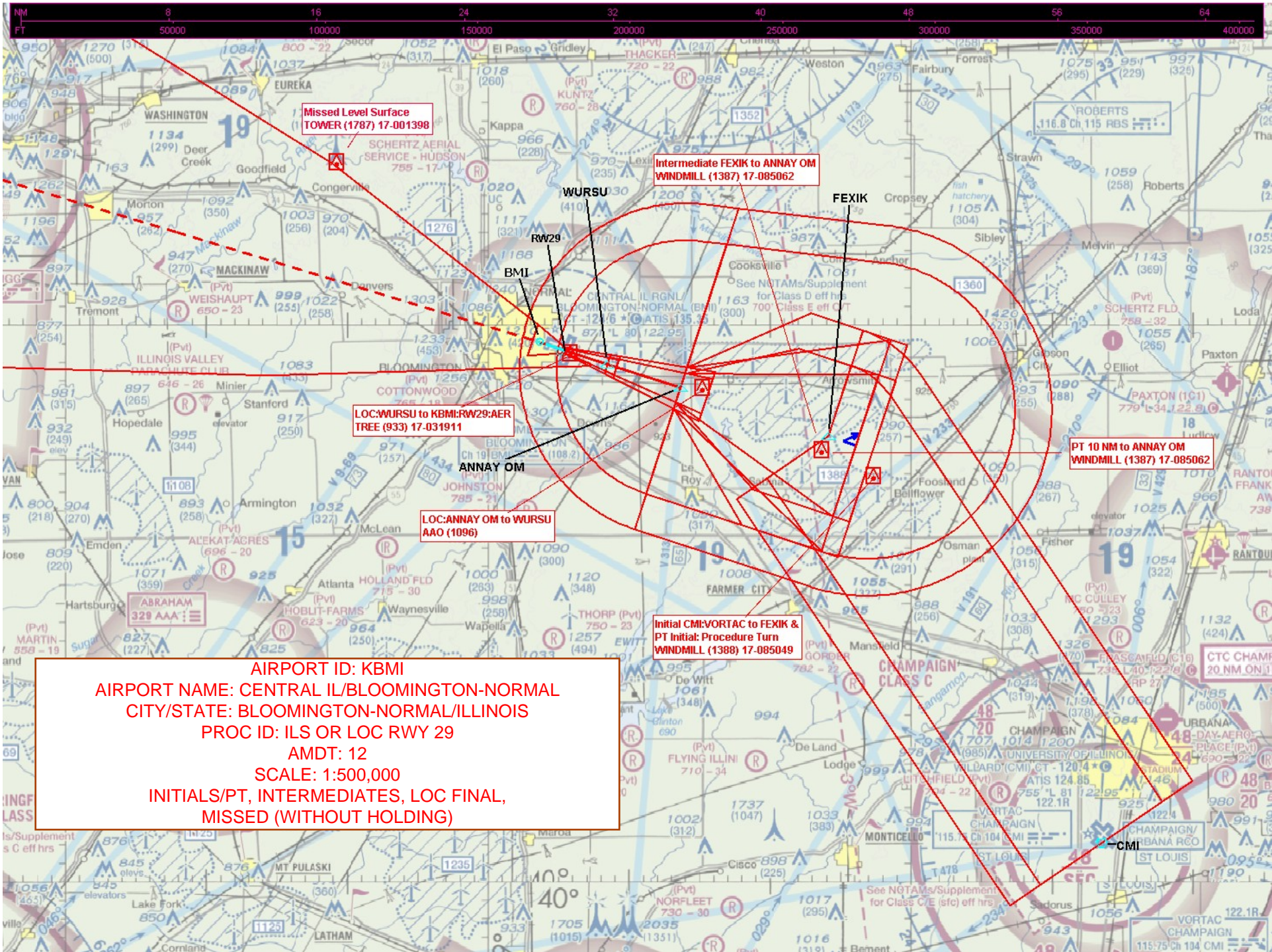
CATEGORY	A	B	C	D
S-ILS 29 **	1071/24 200 (200-1/2)			
S-LOC 29	1380/24	509 (600-1/2)	1380/55	509 (600-1)
C CIRCLING	1380-1	509 (600-1)	1620-2 1/4 749 (800-2 1/4)	1620-2 1/2 749 (800-2 1/2)
WURSU FIX MINIMUMS				
S-LOC 29	1240/24	369 (400-1/2)	1240/35	369 (400-3/8)
C CIRCLING	1340-1	469 (500-1)	1620-2 1/4 749 (800-2 1/4)	1620-2 1/2 749 (800-2 1/2)

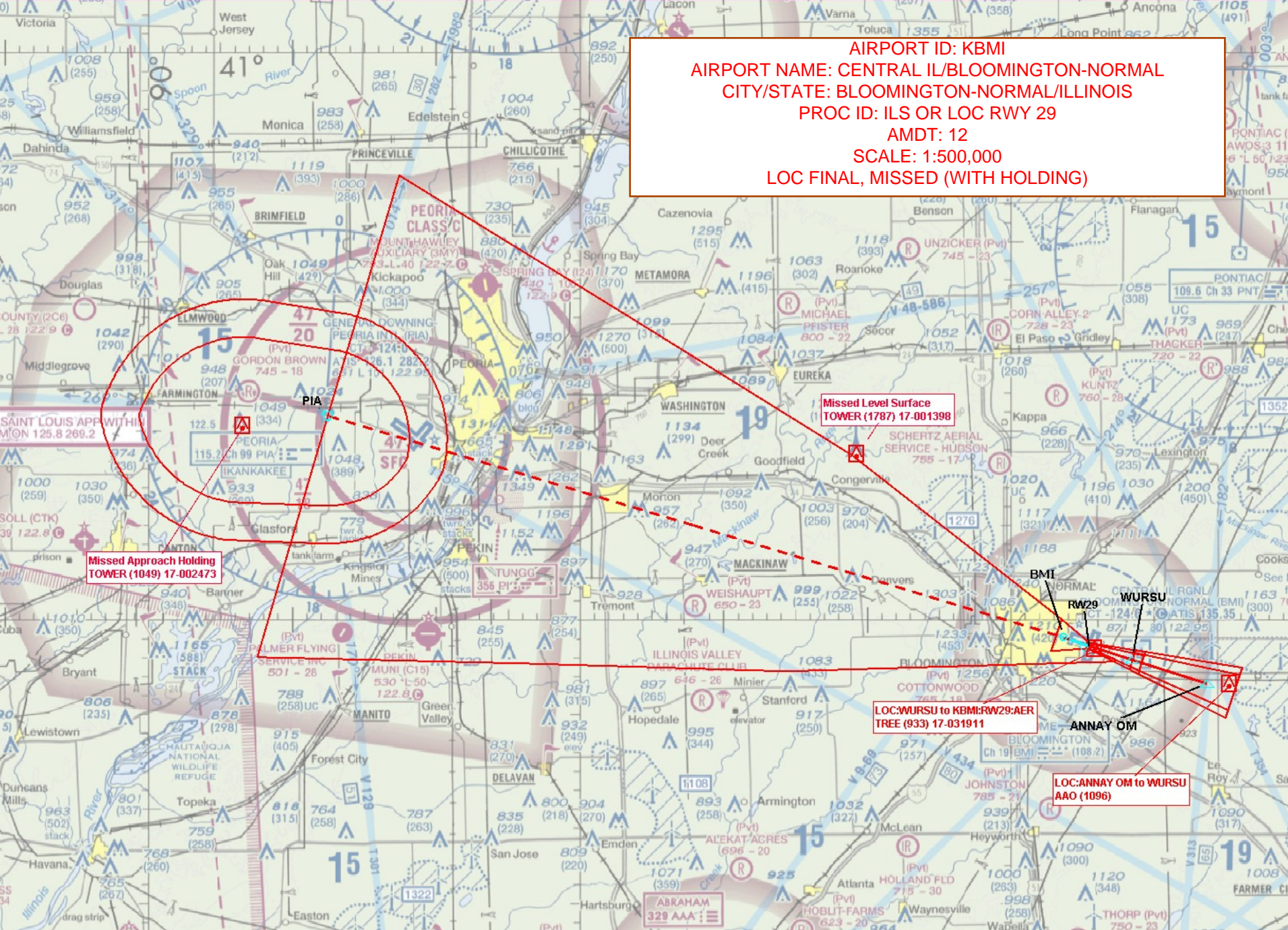
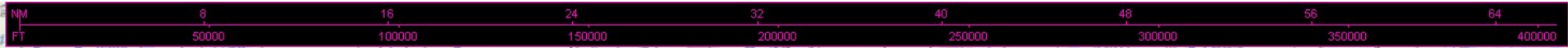
BLOOMINGTON/NORMAL, ILLINOIS
Amdt 11D 20APR23

CENTRAL IL RGNL/BLOOMINGTON-NORMAL (BMI)

40°29'N-88°55'W

ILS or LOC RWY 29





AIRPORT ID: KBMI
AIRPORT NAME: CENTRAL IL/BLOOMINGTON-NORMAL
CITY/STATE: BLOOMINGTON-NORMAL/ILLINOIS
PROC ID: ILS OR LOC RWY 29
AMDT: 12
SCALE: 1:500,000
LOC FINAL, MISSED (WITH HOLDING)

Missed Approach Holding
TOWER (1049) 17-002473

Missed Level Surface
TOWER (1787) 17-001398

TUNGG
356 PLS

LOC:WURSU to KBMI:RW29:AER
TREE (933) 17-031911

LOC:ANNAY OM to WURSU
AAO (1096)

ANNAY OM

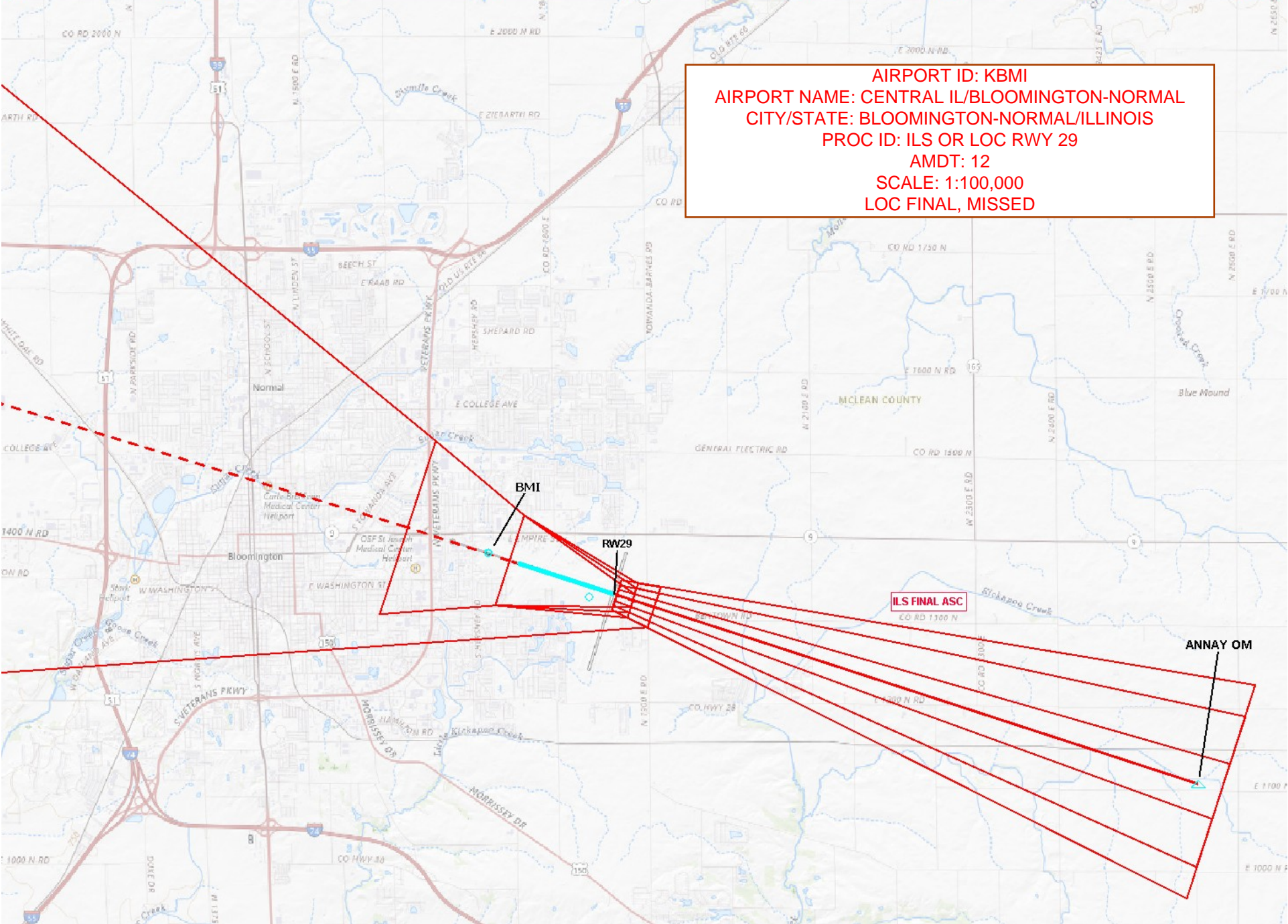
WURSU

BMI

RW29

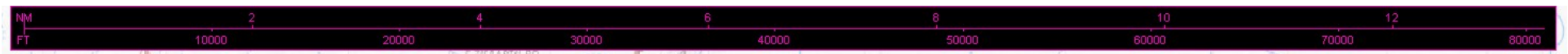


AIRPORT ID: KBMI
AIRPORT NAME: CENTRAL IL/BLOOMINGTON-NORMAL
CITY/STATE: BLOOMINGTON-NORMAL/ILLINOIS
PROC ID: ILS OR LOC RWY 29
AMDT: 12
SCALE: 1:100,000
LOC FINAL, MISSED



ILS FINAL ASC

ANNAY OM



AIRPORT ID: KBMI
AIRPORT NAME: CENTRAL IL/BLOOMINGTON-NORMAL
CITY/STATE: BLOOMINGTON-NORMAL/ILLINOIS
PROC ID: ILS OR LOC RWY 29
AMDT: 12
SCALE: 1:100,000
LOC FINAL, MISSED, CIRCLING

