

| | | | | | |
|---|-------------------------|--------------------------------|-------------------------------------|---|--|
| Flight Procedures Cover Page | Task Action: P-NOTAM | Task Type: IAP | Estimated Chart Date: 05/14/2026 | APWS Task ID: 82E0C2CAEF4342E6AA193D792CA99931 | APWS Project ID: C5E646512AB14862863E0F4C57ADE82B |
| Procedure: RNAV (GPS) RWY 21 AMDT 1C | | Enroute: NO | Specialist: Johnson, Timothy | | Agreement Number: |
| Airport ID: 25M | | | Airport City: RIPLEY | | State: MS |
| Facility ID: | Facility Type: | Flight Inspection Remark Type: | | | |

Procedure Comments:

Visibility Initiative (Garmin) - Update IAP visibility minimums IAW Order 8260.3, Chapter 3, Section 3-3. Visibility Minimums.

PROCESSED IAW TECHNICAL SUPPORT GROUP (AJF-17) MEMO DATED 07/07/2021, SUBJECT: GUIDANCE FOR PROCEDURAL CHANGES REQUIRING FLIGHT INSPECTION/VALIDATION.

CONTACT: CASEY HILL (405) 954-0624.

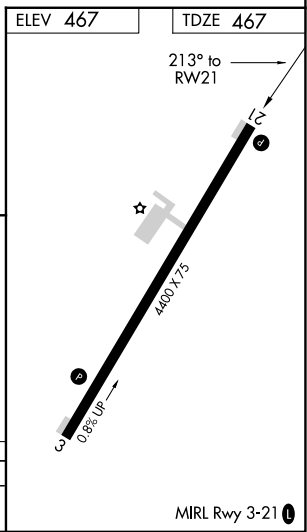
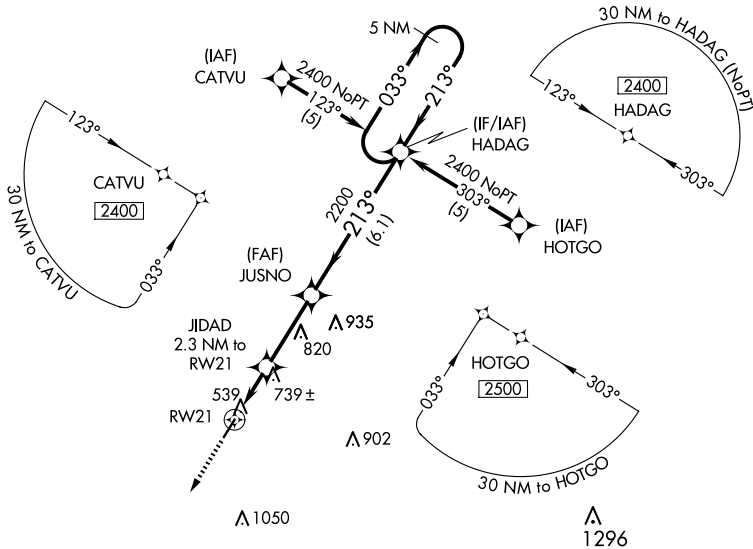


| | | |
|-------------|----------|-------------|
| APP CRS | Rwy Idg | 4400 |
| 213° | TDZE | 467 |
| | Apt Elev | 467 |

RNAV (GPS) RWY 21

RIPLEY (25M)

| | | |
|---|--------------------------------------|---|
| RNP APCH. | | MISSED APPROACH: Climb to 2500 direct CEDAS and hold. |
| <p>▼ Use Corinth altimeter setting; when not received, use Tupelo altimeter setting and increase all MDA 40 feet, and increase LNAV Cat C visibility 1/4 mile. Procedure NA at night. Rwy 21 helicopter visibility reduction below 1 SM NA.</p> | | |
| CRX AWOS-3PT 118.675 | MEMPHIS CENTER 135.9 260.6 | UNICOM 122.8 (CTAF) 0 |



| | | | | | |
|----------|----------------------|--|-------------------------|-------|----------------------|
| 2500 | CEDAS | VGSI and descent angles not coincident (VGSI Angle 3.50/TCH 16). | | HADAG | 5 NM Holding Pattern |
| RW21 | JIDAD 2.3 NM to RW21 | JUSNO | 2200 | 2400 | |
| | ≤ 3.04° TCH 40 | | | | |
| | 2.3 NM | 2.9 NM | 6.1 NM | | |
| CATEGORY | A | B | C | D | |
| LNAV MDA | 1060-1 | 593 (600-1) | 1060-1½ 593 (600-1½) | NA | |

SC-4, 22 JAN 2026 to 19 FEB 2026

SC-4, 22 JAN 2026 to 19 FEB 2026