

Flight Procedures Cover Page	Task Action: FLIGHT CHECK	Task Type: IAP	Estimated Chart Date: 02/20/2025	APWS Task ID: 8428B729493A4234A41D5848D8BFDBFA	APWS Project ID: 4B09E5E7AD244B97A7ED8BA67CAF4DBF
Procedure: RNAV (GPS) RWY 24 AMDT 1D		Enroute: NO	Specialist: Dumar, Ralph		Agreement Number:
Airport ID: KSTL			Airport City: ST LOUIS		State: MO
Facility ID:	Facility Type:	Flight Inspection Remark Type: New FC Slot			

Procedure Comments:
ABBREVIATED AMENDMENT

KSTL ACTIVE DATA USED
REMARKS: CANCELS T-NOTAM FDC 2/5994
CONTACT RAKE MCGRAW (405) 954-8711

QUALITY
26
CHECKED

QUALITY
9
CHECKED
BEGUE

FIPC BASIC FORM

PROCEDURE: RNAV (GPS) RWY 24 AMDT 1D		AIRPORT NAME: ST LOUIS LAMBERT INTL		AIRPORT ID: KSTL	SPECIAL CONTROL NO: OG-12-074-24
FAC ID: KSTL24.01		CITY: ST LOUIS		ST: MO	ORIG CHART DATE: 02/20/2025
DFL TYPE: PROC/S	THIRD PARTY: <input type="checkbox"/> YES	EST. TIME ON SITE: 0.4	REIMB. NUMBER:	PTS TASK ID: 8428B729493A4234A41D5848D8BFDBFA	

PREFLIGHT NOTES

REVIEWER:	DATE:
COMMENTS:	CHECK ONE: <input type="checkbox"/> FLT CK REQ <input type="checkbox"/> NFCR <input type="checkbox"/> REJECT
	YES NO
	CPV COMPLETE? <input checked="" type="checkbox"/> X <input type="checkbox"/>

PROCEDURE RESULTS

INSPECTION DATE: 02/04/2025	CREW #: VN330	N #: N78	INSTRUMENT PROCEDURE STATUS: <input checked="" type="checkbox"/> SAT <input type="checkbox"/> SAT W/CHANGES <input type="checkbox"/> UNSAT	ARINC CODING: <input checked="" type="checkbox"/> SAT <input type="checkbox"/> SAT/GOLD <input type="checkbox"/> UNSAT
FLIGHT INSPECTOR SIGNATURE: brian harrelson @ 02/04/2025 17:00		PRINTED NAME: HARRELSON, BRIAN DAVID		NOTAM INITIATED? <input type="checkbox"/> YES <input checked="" type="checkbox"/> NO

FLIGHT INSPECTOR REMARKS:
OG-12-074-24. KSTL, St Louis Lambert Intl, St. Louis, MO. RNAV (GPS) RWY 24 Amdt. 1D. Complete/SAT after adding PBN requirements.

IN-FLIGHT OBSTACLE REPORT

OBSTRUCTION ID #:	COORDINATES OR LOCATION:	GNSS ALTITUDE (MSL):	BAROMETRIC ALTITUDE (MSL):	HEIGHT ABOVE GROUND LEVEL:
--------------------------	---------------------------------	-----------------------------	-----------------------------------	-----------------------------------

ST. LOUIS, MISSOURI

AL-360 (FAA)

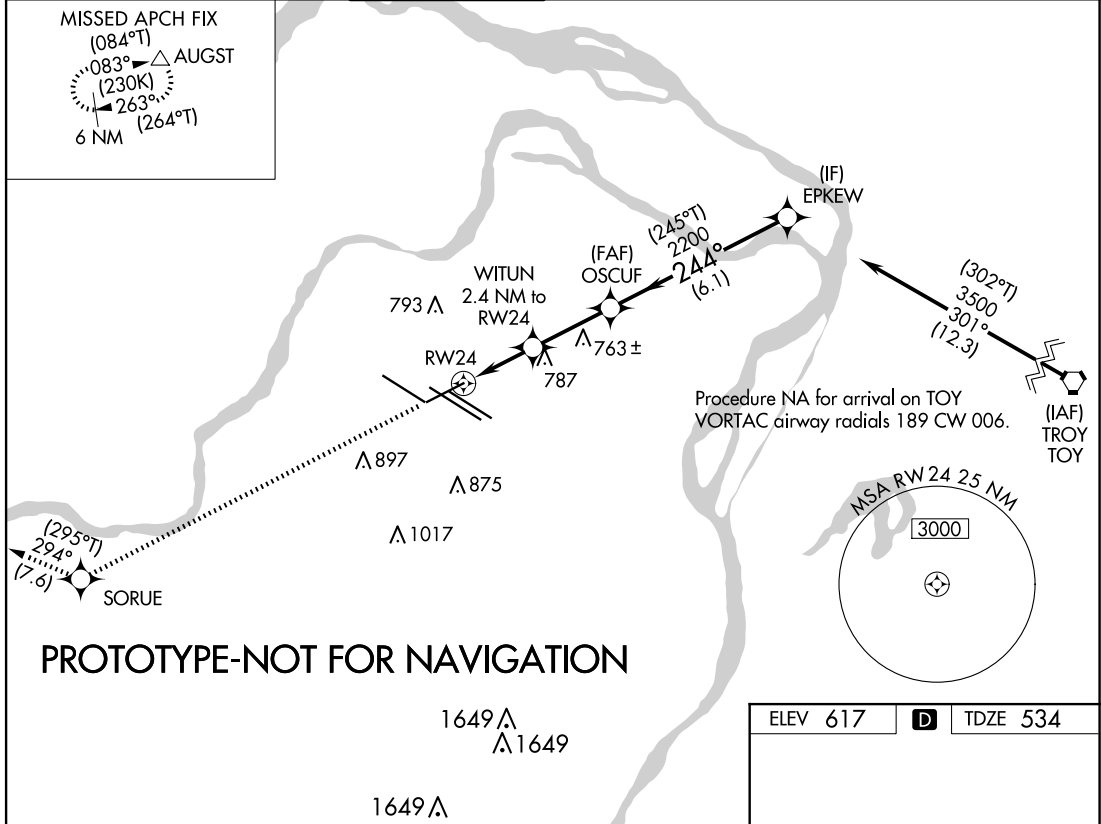
FIG

WAAS CH 87021 W24A	APP CRS 244°	Rwy ldg TDZE Apt Elev	7603 534 617
--	------------------------	-----------------------------	---

RNAV (GPS) RWY 24

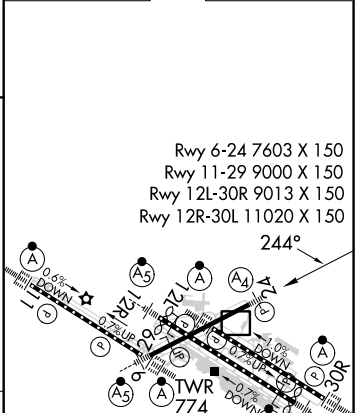
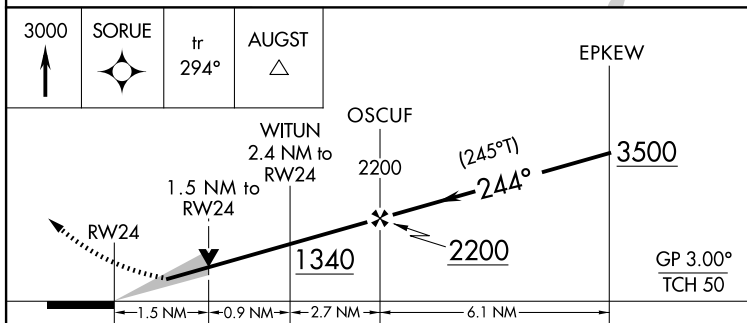
ST LOUIS LAMBERT INTL (STL)

RNP APCH - GPS.		<p>▼ For uncompensated Baro-VNAV systems, LNAV/VNAV NA below -16°C or above 54°C. Inop table does not apply to LPV. For inop ALS, increase LNAV/VNAV Cat E visibility to 1½ SM and LNAV Cat E visibility to 1½ SM.</p>		<p>MALS</p>		<p>MISSED APPROACH: Climb to 3000 direct SORUE and on track 294° to AUGST and hold.</p>	
D-ATIS 125.025 379.925	ST. LOUIS APP CON 132.125 360.6	ST. LOUIS TOWER 120.05 284.6	GND CON 121.9 348.6 (Inbound) 121.65 377.175 (Outbound) 118.925 227.125 (Rwy 11/29)		CLNC DEL 119.5 363.1	CPDLC	



PROTOTYPE-NOT FOR NAVIGATION

ELEV 617	D	TDZE 534
----------	----------	----------



CATEGORY	A	B	C	D	E
LPV DA	734/40		200 (200-¾)		
LNAV/VNAV DA	1015/60		481 (400-1¼)		
LNAV MDA	1080/40	546 (500-¾)	1080-1⅜	546 (500-1⅜)	

HIRL all Rwy's
TDZ/CL Rwy's 11, 12L, 12R, 29, and 30R

AUTOMATED AL-360 RNAV (GPS) RWY 24

NC-3
10-23-24
COMPILER: JUN
REVIEWER:
DBL CHKR:
EFF: FIG

ST. LOUIS, MISSOURI
Amdt 1D FIG

38°45'N-90°22'W

ST LOUIS LAMBERT INTL (STL) RNAV (GPS) RWY 24

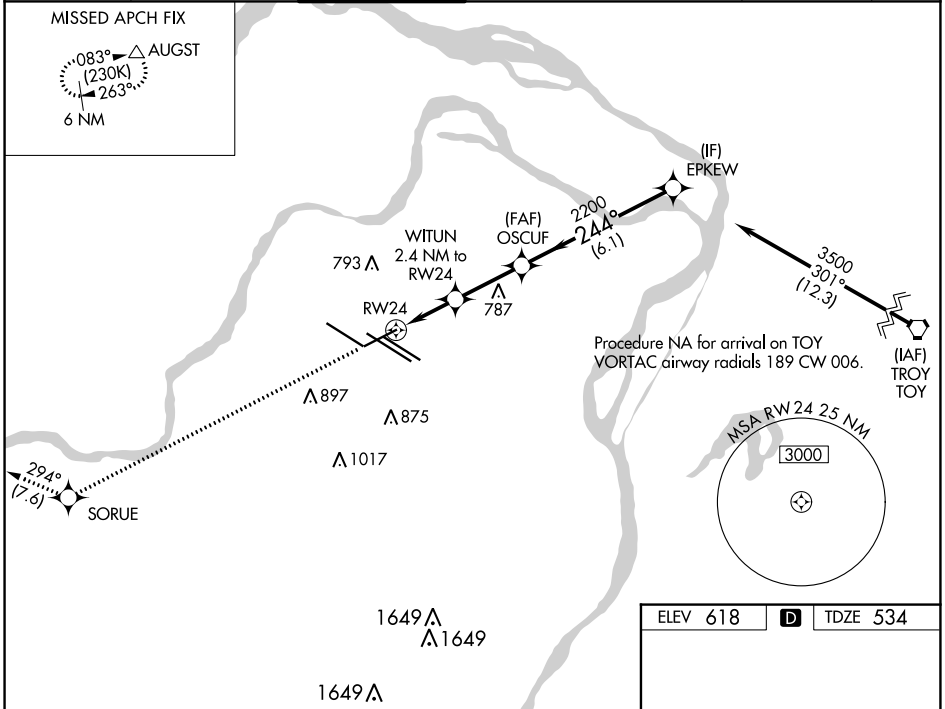
WAAS CH 87021 W24A	APP CRS 244°	Rwy Idg TDZE Apt Elev	7603 534 618
--	------------------------	-----------------------------	---



RNAV (GPS) RWY 24

ST LOUIS LAMBERT INTL (STL)

<p>▽ For uncompensated Baro-VNAV systems, LNAV/VNAV NA below -16°C (4°F) or above 54°C (130°F). Rwy 24 helicopter visibility reduction below ¼ SM NA. DME/DME RNP-0.3 NA. For inop ALS, increase LNAV/VNAV all Cats visibility to 1½ and LNAV Cats C, D and E visibility to 1½.</p>			MALS 	MISSED APPROACH: Climb to 3000 direct SORUE and on track 294° to AUGST and hold.	
D-ATIS 125.025 379.925	ST. LOUIS APP CON 132.125 360.6	ST. LOUIS TOWER 120.05 284.6	GND CON 121.9 348.6 (Inbound) 121.65 377.175 (Outbound) 118.925 227.125 (Rwy 11/29)	CLNC DEL 119.5 363.1	CPDLC



NC-3, 18 APR 2024 to 16 MAY 2024

NC-3, 18 APR 2024 to 16 MAY 2024

3000	SORUE	tr 294°	AUGST	EPKEW
*LNAV only				
RW24		*1.6 NM to RW24	WITUN 2.4 NM to RW24	OSCUF 2200
		1340*	2200	3500
		GP 3.00°	TCH 50	
CATEGORY	A	B	C	D
LPV DA		734/40	200 (200-¾)	
LNAV/VNAV DA		931/50	397 (400-1)	
LNAV MDA	1080/40	546 (500-¾)	1080-1¾	546 (500-1¾)

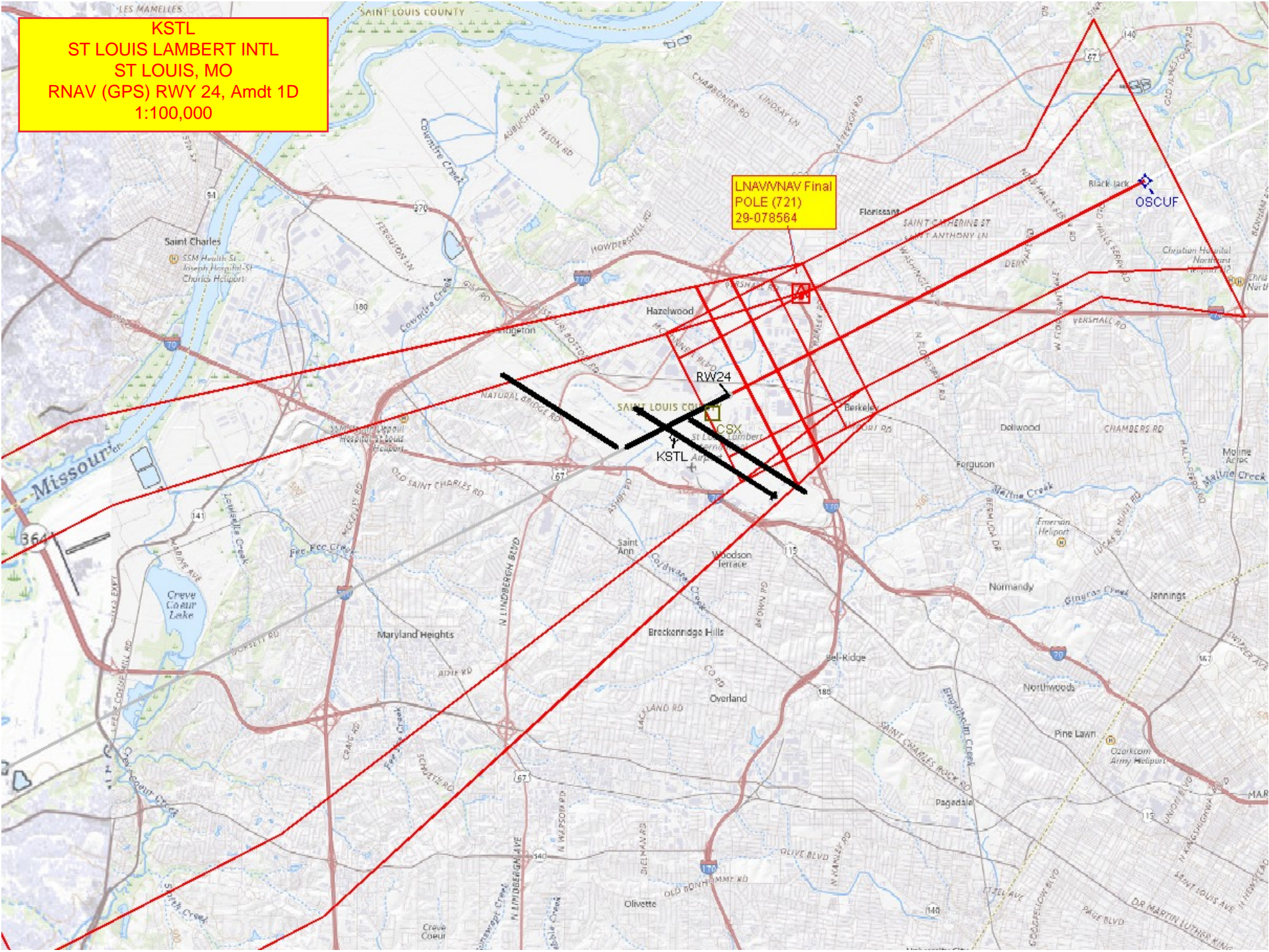
ELEV 618	D	TDZE 534
----------	----------	----------

Rwy 6-24 7603 X 150
Rwy 11-29 9000 X 150
Rwy 12L-30R 9013 X 150
Rwy 12R-30L 11020 X 150

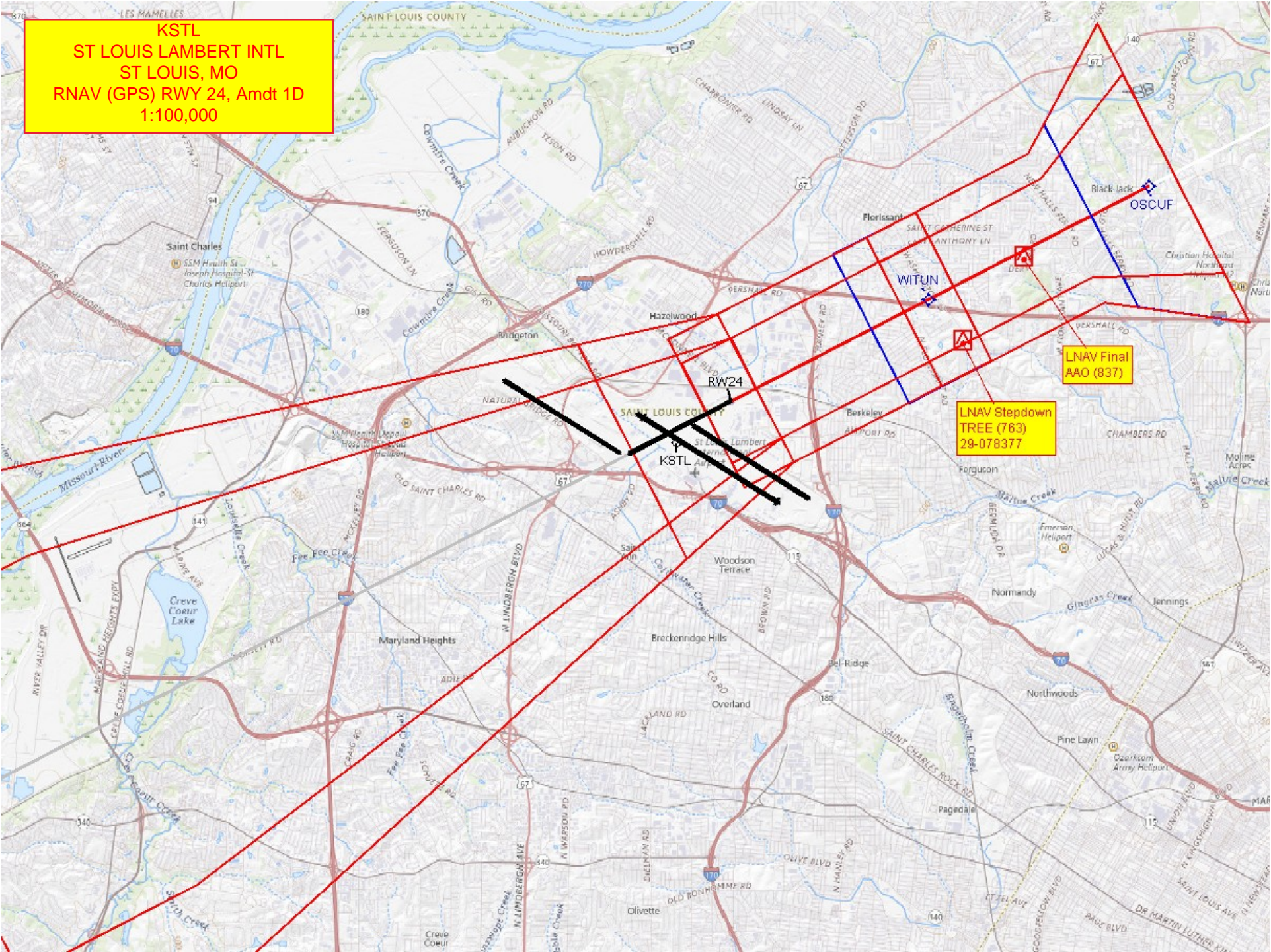
HRL all Rwys
TDZ/CL Rwys 11, 12L, 12R, 29, and 30R

**KSTL
ST LOUIS LAMBERT INTL
ST LOUIS, MO
RNAV (GPS) RWY 24, Amdt 1D
1:100,000**

**LNAV/NAV Final
POLE (721)
29-078564**



KSTL
ST LOUIS LAMBERT INTL
ST LOUIS, MO
RNAV (GPS) RWY 24, Amdt 1D
1:100,000



KSTL
St. Louis Lambert Intl
St. Louis, MO
RNAV (GPS) Rwy 24, Amdt 1D
1:500,000

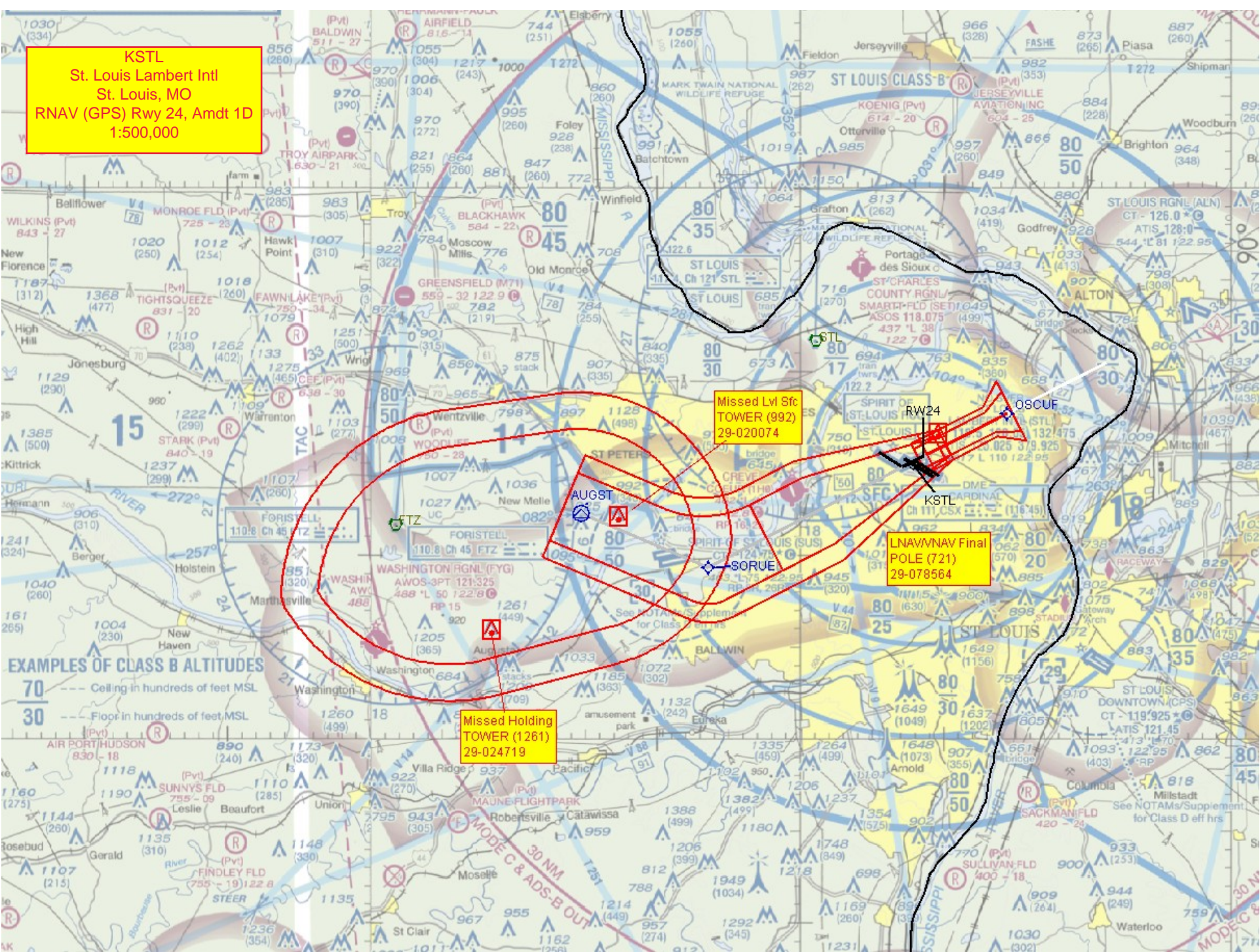
Missed Lvl Sfc
TOWER (992)
29-020074

LNAV/VNAV Final
POLE (721)
29-078564

Missed Holding
TOWER (1261)
29-024719

EXAMPLES OF CLASS B ALTITUDES

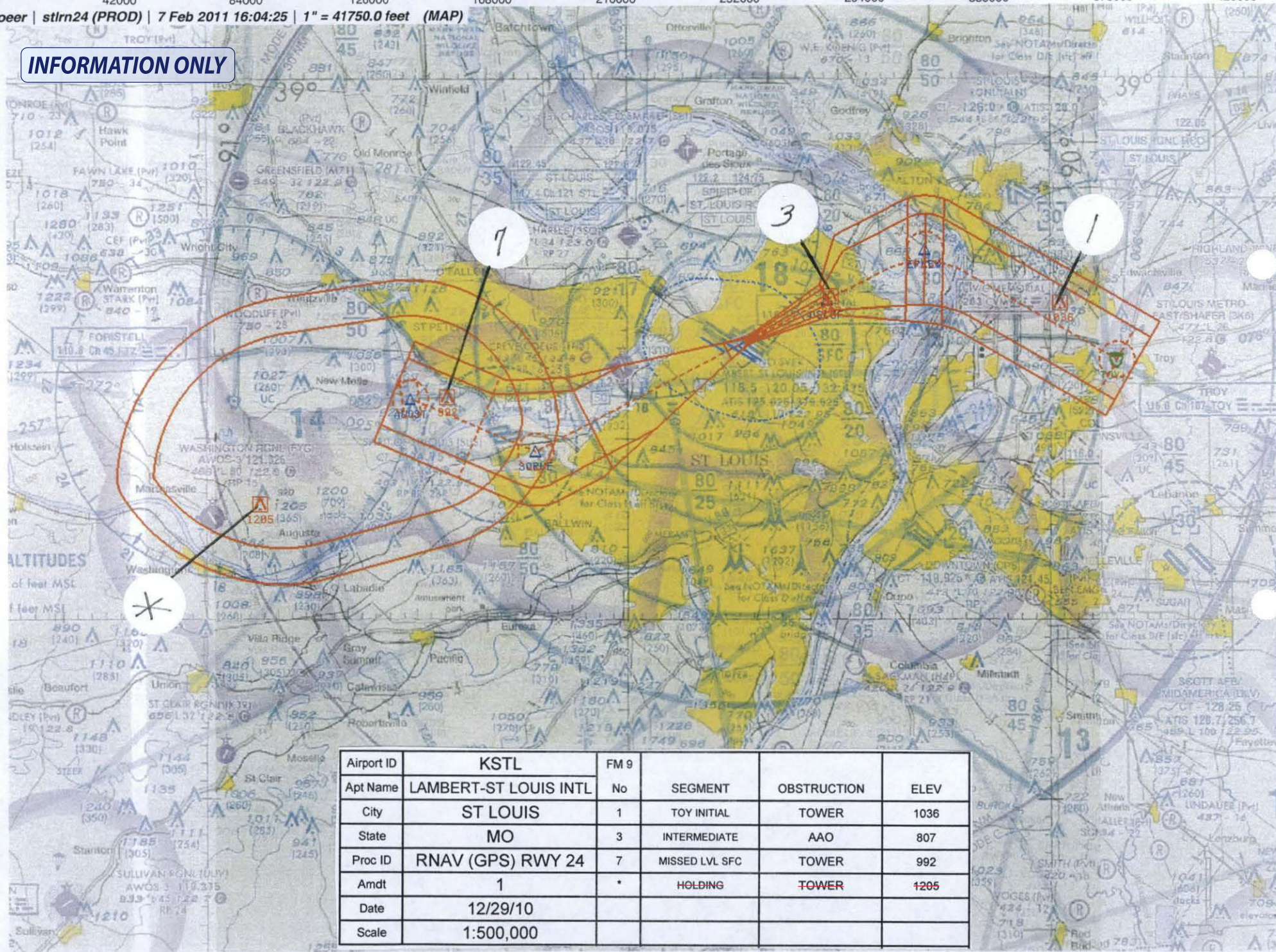
- 70 --- Ceiling in hundreds of feet MSL
- 30 --- Floor in hundreds of feet MSL



NM 7 14 21 28 35 42 49 56 63 70
 FT 42000 84000 126000 168000 210000 252000 294000 336000 378000 420000

fpoer | stlrn24 (PROD) | 7 Feb 2011 16:04:25 | 1" = 41750.0 feet (MAP)

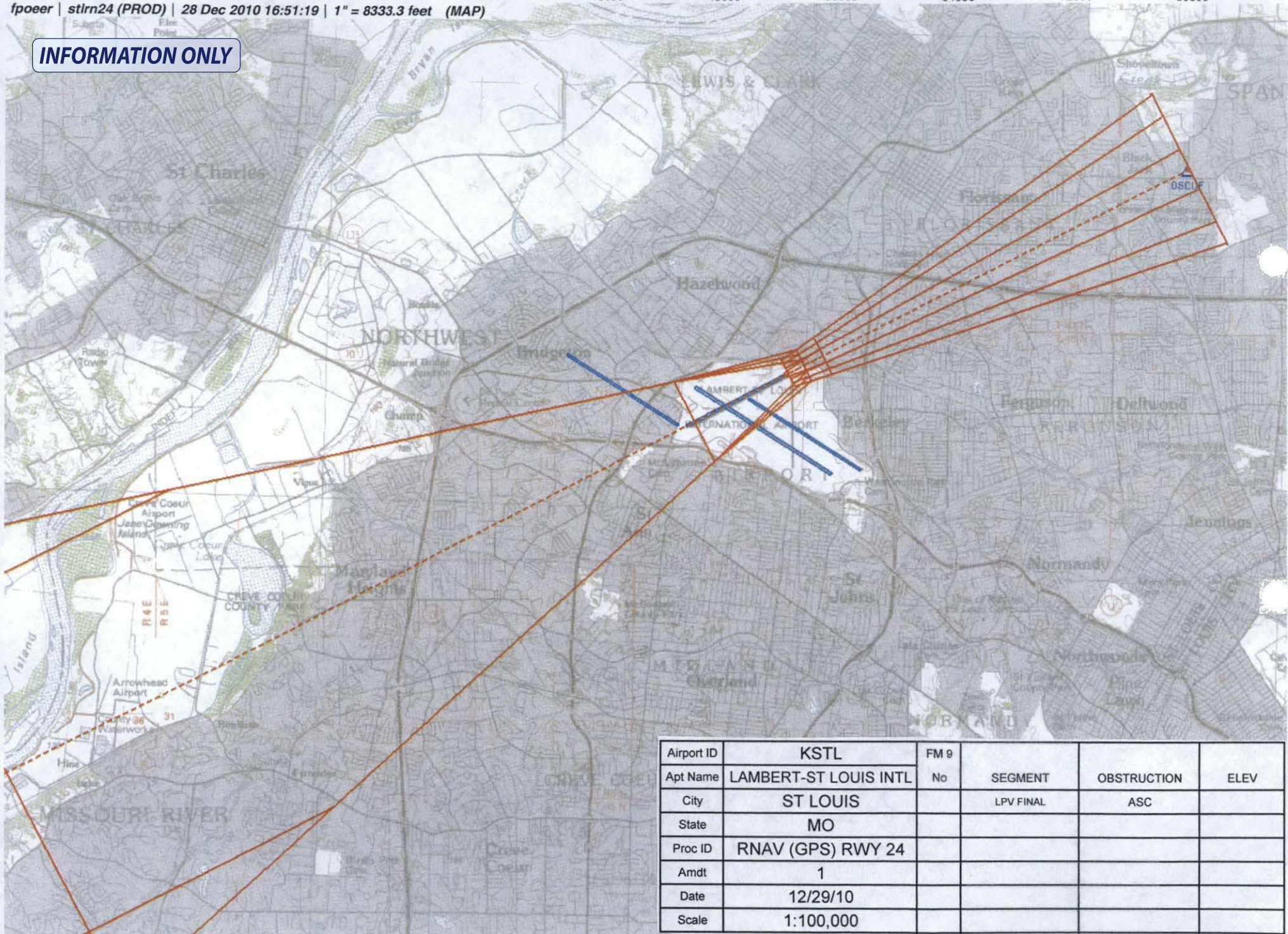
INFORMATION ONLY



NM 1 2 3 4 5 6 7 8 9 10 11 12 13 14
 FT 8000 16000 24000 32000 40000 48000 56000 64000 72000 80000

fpocer | stlrn24 (PROD) | 28 Dec 2010 16:51:19 | 1" = 8333.3 feet (MAP)

INFORMATION ONLY



Airport ID	KSTL	FM 9			
Apt Name	LAMBERT-ST LOUIS INTL	No	SEGMENT	OBSTRUCTION	ELEV
City	ST LOUIS		LPV FINAL	ASC	
State	MO				
Proc ID	RNAV (GPS) RWY 24				
Amdt	1				
Date	12/29/10				
Scale	1:100,000				