

TX 38XS RNAV (GPS) RWY 14 ORIG-A

8-26-22 PRB RESULTS: Returned for Rework

REQUESTED BY: AJV-A

PRB RESULTS: RETURN FOR REWORK

CATEGORICAL EXCLUSION:

- IAW 1050.1: NEEDS TO BE UPDATED: THE DOCUMENT IS FROM 2005 AND IT IS FOR RNAV (GPS) RWY 14, ORIG, SAN RAFAEL RANCH, SANTA ELENA, TN (SHOULD BE TX). **New CATEx included**

8260-9:

- MORE DETAILED EXPLANATION REQUIRED TO CLARIFY NOTES/EXPLANATIONS ON PAGE 6 OF 10 MSA SEGMENT WHICH STATES "AIRPORT WILL REQUIRE - NIGHT EVALUATION." THIS WOULD IMPLY THE PROCEDURE IS NA AT NIGHT UNTIL THE NIGHT EVALUATION IS COMPLETE. **Removed NOTE FC NIGHT EVAL IS SAT**

CONFIRM AIRFIELD HAS APPROVED WEATHER REPORTING CAPABILITY FOR ALTIMETER SETTING, ELSE RECONSTRUCT IAP TO USE REMOTE ALTIMETER ONLY MINS **Altimeter setting confirmed and in AIRNAV**

All items complete - Teffeteller

Flight Procedures Cover Page	Task Action: FLIGHT CHECK	Task Type: IAP	Estimated Chart Date: 10/05/2023	APWS Task ID: 846FE08123EB44D783F2C8DEEFBFBDB92	APWS Project ID: 96EECDA0D85847F28B3D4DF469855C08
Procedure: RNAV (GPS) RWY 14 AMDT 0A		Enroute: NO	Specialist: Moore, Frank		Agreement Number: AC-003136
Airport ID: 38XS			Airport City: SANTA ELENA		State: TX
Facility ID:	Facility Type:	Flight Inspection Remark Type: New FC Slot			

Procedure Comments:

CONTACT DAVE TEFFETELLER 202-267-5177

08/02/2023 THIS IS AN UPDATED COPY OF THE FORM DEVELOPED ON 06/10/2022
REMOVED AIRPORT WILL REQUIRE - NIGHT EVALUATION AND UNICOM WILL PROVIDE LOCAL ALTIMETER SETTING (122.8) FROM NOTES/EXPLANATIONS FROM PROCEDURE SEGMENTS.



FIPC BASIC FORM									
PROCEDURE: RNAV (GPS) RWY 14 AMDT 0A			AIRPORT NAME: SAN RAFAEL RANCH		AIRPORT ID: K38XS		SPECIAL CONTROL NO: OG-07-276-22		
FAC ID: K38XS14		CITY: SANTA ELENA			ST: TX		ORIG CHART DATE: 11/03/2022		
DFL TYPE: PROC/S	THIRD PARTY: <input type="checkbox"/> YES	EST. TIME ON SITE: 0.4	REIMB. NUMBER:		PTS TASK ID: 846FE08123EB44D783F2C8DEEFBFD92				
PREFLIGHT NOTES									
REVIEWER:						DATE:			
COMMENTS:						CHECK ONE:			
						<input type="checkbox"/> FLT CK REQ <input type="checkbox"/> NFCR <input type="checkbox"/> REJECT			
								YES	NO
						CPV COMPLETE?		X	
PROCEDURE RESULTS									
INSPECTION DATE: 12/29/2022		CREW #: VN477	N #: N71	INSTRUMENT PROCEDURE STATUS: <input checked="" type="checkbox"/> SAT <input type="checkbox"/> SAT W/CHANGES <input type="checkbox"/> UNSAT		ARINC CODING: <input checked="" type="checkbox"/> SAT <input type="checkbox"/> SAT/GOLD <input type="checkbox"/> UNSAT			
FLIGHT INSPECTOR SIGNATURE: colton crowder @ 12/29/2022 16:37			PRINTED NAME: CROWDER, COLTON MAX				NOTAM INITIATED? <input type="checkbox"/> YES <input checked="" type="checkbox"/> NO		
FLIGHT INSPECTOR REMARKS:									
IN-FLIGHT OBSTACLE REPORT									
OBSTRUCTION ID #:	COORDINATES OR LOCATION:		GNSS ALTITUDE (MSL):		BAROMETRIC ALTITUDE (MSL):		HEIGHT ABOVE GROUND LEVEL:		

WAAS CH 70315 W14A	APP CRS 142°	Rwy Idg TDZE 313 Apt Elev 313	6000
--	------------------------	---	-------------

RNAV (GPS) RWY 14

SAN RAFAEL RANCH (38XS)

RNP APCH - GPS.

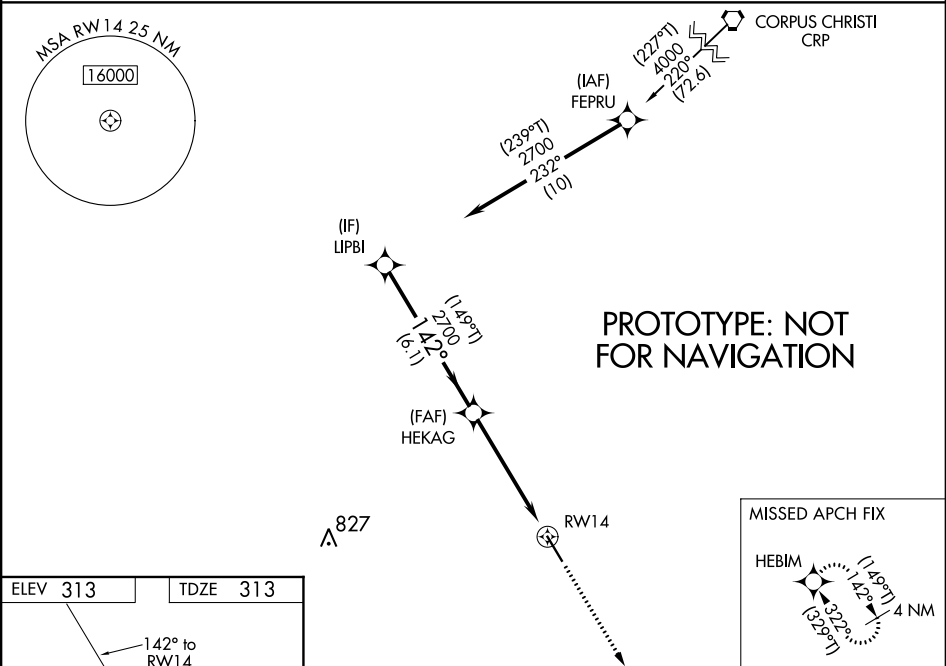
⚠️ NA

When local altimeter setting not received, use Falfurrias altimeter setting and increase LPD DA to 662 feet; increase LNAV/VNAV DA to 689 feet; increase all MDAs 100 feet and LNAV visibility Cat C/D ¾ SM, and Circling visibility Cat C/D ¼ SM. For uncompensated Baro-VNAV systems, LNAV/VNAV NA below -15°C or above 54°C. Baro-VNAV and VDP NA when using Falfurrias altimeter setting. Use of San Rafael Ranch requires permission of the owner; use of this procedure requires specific authorization by FAA Flight Standards.

MISSED APPROACH:
Climb to 2700 direct
HEBIM and hold.

UNICOM

122.8

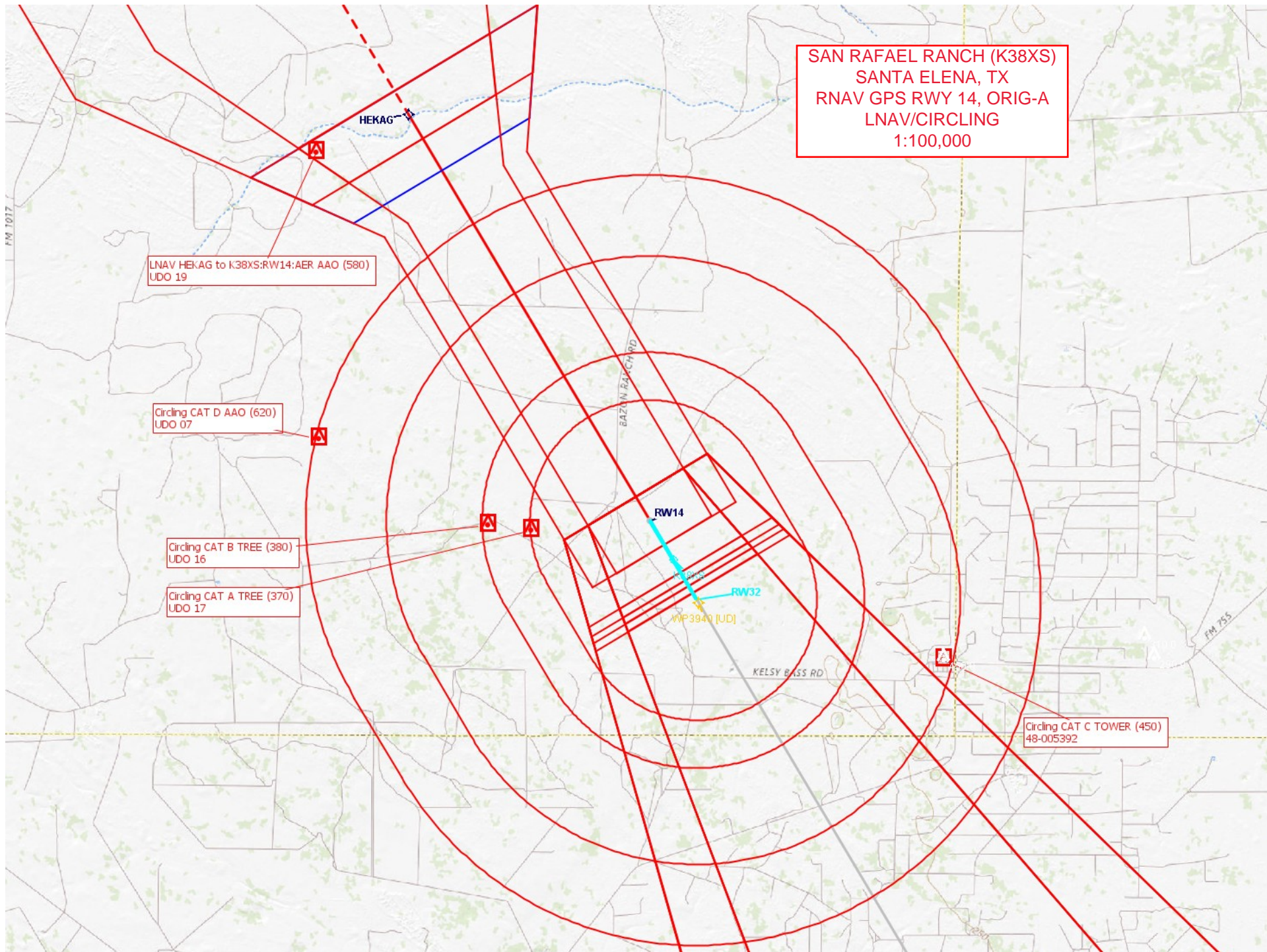


ELEV 313	TDZE 313
----------	----------

142° to RWY 14

MILR Rwy 14-32

LIPBI		HEKAG		2700	HEBIM
				2000	
				2000	
				1.5 NM to RWY 14	
				6.1 NM	3.6 NM
				1.5 NM	
CATEGORY	A	B	C	D	
LPV DA	563-1		250 (300-1)		
LNAV/VNAV DA	590-1		277 (300-1)		
LNAV MDA	840-1	527 (600-1)	840-1½	527 (600-1½)	
CIRCLING	840-1	527 (600-1)	840-1½ 527 (600-1½)	920-2 607 (700-2)	



SAN RAFAEL RANCH (K38XS)
SANTA ELENA, TX
RNAV GPS RWY 14, ORIG-A
LPV
1:100,000

LPV TREE (339)-

RW14

RW32

KELSY BASS RD

~~STARR COUNT~~

Missed Level Surface TOWER (595)
48-011845

Delmita

SAN RAFAEL RANCH (K38XS)
SANTA ELENA, TX
RNAV GPS RWY 14, ORIG-A
LNAV/VNAV
1:100,000

ASC

HEKAG[®]

RW14

RW32

KELSY BASS R

 San Isidro

Missed Level Surface TOWER (595)
48-011845

~~PW12~~

XS93

RW30



U.S. Department
of Transportation

**Federal Aviation
Administration**

Memorandum

MIKE MONRONEY AERONAUTICAL CENTER
CENTRAL FLIGHT PROCEDURES BRANCH
AVN-120
P.O. BOX 25082
OKLAHOMA CITY, OK 73125

Subject: **ACTION:** Documentation of a Categorical
Exclusion Under Order 1050.1

Date:

MAY 17 2005

From: Manager, Central Flight Procedures
Branch, AVN-120

Reply to
Attn. of:

To: File

- A. Proposed Action: Establish a standard instrument approach procedure (IAP) titled RNAV (GPS) RWY 14, ORIG, San Rafael Ranch, Santa Elena, TN.
- B. This action qualifies for consideration as a categorically excluded action as it falls under the following specific categorical exclusion provision: Publishing of Instrument Procedures conducted over noise sensitive areas; modifications to currently approved instrument procedures conducted below 3,000 feet AGL that do not increase minimum altitudes and landing minima.
- C. Other supporting information:
 - ASO-220 Memorandum dated April 5, 1989
 - AFS-1 Memorandum dated September 21, 1994
 - AVN-100 Memorandum dated July 23, 1996
- D. Review and analysis by the FAA does not indicate that any extraordinary circumstances listed in Order 1050.1 or other reasons exist that would cause the undersigned to believe that the proposed action might have the potential for causing significant environmental impacts upon its implementation. The proposed action does not individually or cumulatively have a significant effect on the human environment and, therefore, is determined to be categorically excluded from further environmental documentation according to Order 1050.1

Originated by: Ron Sanders
Title: FPO Manager

Date 5 Nov 2004


John Bickerstaff



U.S. Department
of Transportation
**Federal Aviation
Administration**

Memorandum

MIKE MONRONEY AERONAUTICAL CENTER
PRODUCTION INTEGRATION BRANCH, AVN-150
P.O. BOX 25082
OKLAHOMA CITY, OK 73125

Subject: **ACTION:** Special Request

Date: **JUL 26 2005**

From: Manager, Production Integration
Branch, AVN-150

Reply to: Karen Gonzalez:
Attn. of: (405) 954-7414
FAX (405) 954-13

To: Manager, Flight Technologies and
Procedures Division, AFS-400
THRU: Manager, Flight Procedure
Standards Branch, AFS-420

The attached Special for San Rafael Ranch, Santa Elena, TX
is forwarded for your review and approval.

Please return a signed copy for our files.

8260-7&10 RNAV (GPS) RWY 32, ORIG
RNAV (GPS) RWY 14, ORIG

The associated FAA Form(s) have been forwarded to NFDC.

8260-2 CORPUS CHRISTI VORTAC, TX REV 12
FEPRU, TX ORIG HEBIM, TX ORIG
HEKAG, TX ORIG LIPBI, TX ORIG

ORIGINAL SIGNED BY

Glenn D. Weeks

Attachments

cc: AVN-100rf, AVN-120

File: AVN-150 (K38XS)
WP:D:MYDOCS.Special.SAN RAFAEL RANCH.SANTA ELENA.TX.doc
AVN-150:GWeeks:cf:(405) 954-7370:7/22/05

CONCURRENCES
ROUTING SYMBOL AVN-150
INITIALS/SIG cf <i>CF</i>
DATE 7-25-05
ROUTING SYMBOL
INITIALS/SIG
DATE
ROUTING SYMBOL AVN-150
INITIALS/SIG GWeeks <i>GW</i>
DATE 7/25/05
ROUTING SYMBOL AVN-120
INITIALS/SIG JBoard <i>JB</i>
DATE 7-25-05
ROUTING SYMBOL AVN-120
INITIALS/SIG GDavis <i>GD</i>
DATE 7/25/05
ROUTING SYMBOL AVN-120
INITIALS/SIG JBickerstaff <i>JB</i>
DATE 7/25/05
ROUTING SYMBOL AVN-150
INITIALS/SIG NetMtg <i>NetMtg</i>
DATE 7-26-05
ROUTING SYMBOL
INITIALS/SIG
DATE

Federal Aviation Administration Categorical Exclusion Declaration

Date: 04/05/23
IFP: Stokes, Walter (walter.a.stokes@faa.gov)
Airport Contact: -
Request ID: 38XS_23317 Single or Multiple Procedure: Multiple Procedure Name(s): RNAV (GPS) RWY 14 RNAV (GPS) RWY 32 Historic Properties: None Procedure Request Description: Description of Proposed Action: The instrument flight procedures for San Rafael Ranch, 38XS in Santa Elena, Texas require amendment. Procedure Description: RNAV (GPS) RWY 14 Aeronautical Information Services Instrument Flight Procedures Group has been conducting a minimum required obstacle clearance (ROC) evaluation for all instrument approach procedures in the National Airspace System inventory that published circling line of minima. This obstacle evaluation was required to evaluate the expanded circling radii for the larger circling areas for all category of aircrafts to ensure that the increased circling maneuvering met the safety that were implemented by Flight Standards implemented criteria. The revised criteria warranted an amendment to this special procedure to ensure it met the minimum ROC for each aircraft category. The lateral navigation (LNAV) minimum descent altitude (MDA) for all categories changed to 840 feet. The LNAV Category C visibility increased to 1 1/2 statute miles. The circling Category A,B&C MDA changed to 840 feet and Category D MDA changed to 920 feet. The flight track remains the same. All the other changes to the procedure are administrative notes that have updated to comply with current documentation criteria. RNAV (GPS) RWY 32 Aeronautical Information Services Instrument Flight Procedures Group has been conducting a minimum required obstacle clearance (ROC) evaluation for all instrument approach procedures in the National Airspace System inventory that published circling line of minima. This obstacle evaluation was required to evaluate the expanded circling radii for the larger circling areas for all category of aircrafts to ensure that the increased circling maneuvering met the safety that were implemented by Flight Standards implemented criteria. The revised criteria warranted an amendment to this special procedure to ensure it met the minimum ROC for each aircraft category. The LNAV MDA (all Categories) changed to 740 feet. The LNAV Category C and D visibility increased to 1 1/4 statute miles. The circling Category D MDA changed to 920 feet. The flight track remains the same. All the other changes to the procedure are administrative notes that have updated to comply with current documentation criteria. Procedure Benefit: The RNAV (GPS) RWY 14 and the RNAV (GPS) RWY 32 are special procedures developed and maintained by the FAA and the use of this procedure requires permission of the owner. In addition, it requires specific authorization by FAA Flight Standards Division.

Procedure Need:

This special procedure is owned and utilized by San Rafael Ranch proponents.

The District EPS has reviewed the proposed action and determined that no extraordinary circumstances exist as defined in FAA Order 1050.1F or JO 7400.2N that preclude a categorical exclusion determination. The proposed action would not route traffic over noise-sensitive or environmentally-sensitive areas or lower traffic altitudes.

Declaration of Exclusion:

The FAA has reviewed the above referenced proposed action and it has been determined, by the undersigned, to be categorically excluded from further environmental documentation according to FAA Order 1050.1, "Environmental Impacts: Policies and Procedures." The implementation of this action will not result in any extraordinary circumstances in accordance with FAA Order 1050.1.

Basis for this Determination:

This review was conducted in accordance with policies and procedures in Department of Transportation Order 5610.1, "Procedures for Considering Environmental Impacts" and FAA Order 1050.1.

The applicable Categorical Exclusion is:

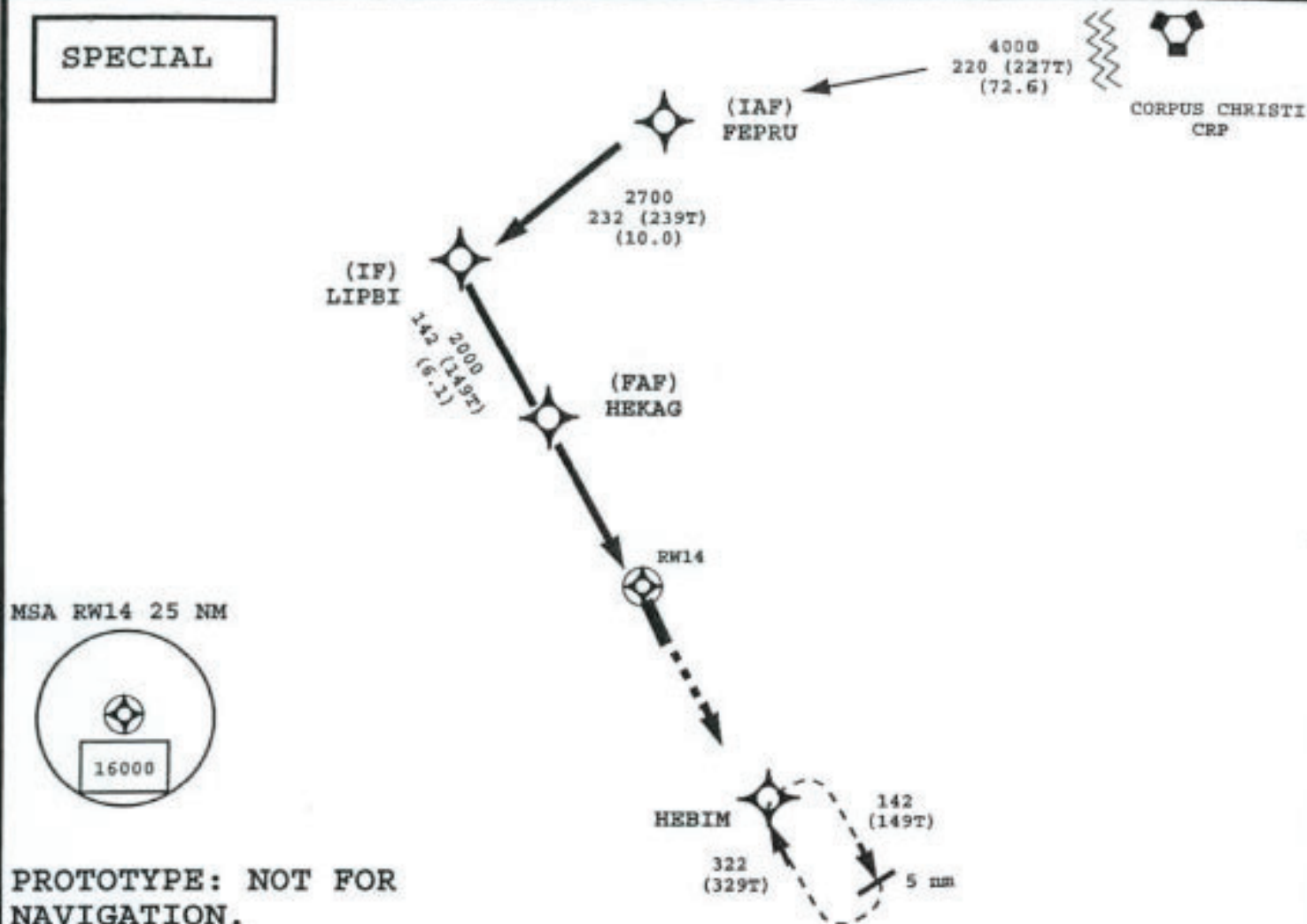
5-6.5.i: Establishment of new or revised air traffic control procedures conducted at 3,000 feet or more above ground level (AGL); procedures conducted below 3,000 feet AGL that do not cause traffic to be routinely routed over noise sensitive areas; modifications to currently approved procedures conducted below 3,000 feet AGL that do not significantly increase noise over noise sensitive areas; and increases in minimum altitudes and landing minima. For modifications to air traffic procedures at or above 3,000 feet AGL, the Noise Screening Tool (NST) or other FAA-approved environmental screening methodology should be applied. (ATO, AVS)

The above flight procedure has been developed within the accepted parameters.

Concurrence/Reviewed By: **ROBERTO I RAMOS** Digitally signed by ROBERTO I RAMOS
Date: 2023.04.05 15:47:32 -05'00' Date: _____
Title: Robb Ramos, Environmental Protection Specialist
ATO Central Service Center, Operations Support Group, AJV-C25

Approved By: **CHRISTOPHER L SOUTHERLAND** Digitally signed by CHRISTOPHER L SOUTHERLAND
Date: 2023.04.06 12:20:05 -05'00' Date: _____
Title: Christopher L. Southerland, Manager
ATO Central Service Center, Operations Support Group, AJV-C2

SPECIAL



2700

HEBIM

MISSED APPROACH: CLIMB TO 2700 DIRECT HEBIM AND HOLD.

*LNAV ONLY

	(IF) LIPBI	(FAF) HEKAG	(MAP) RW14	
	2700	2000		
	142	142		
	(149T)	(149T)		
	6.10	5.10		
CATEGORY	A	B	C	D
LPV DA	563-1 250	563-1 250	563-1 250	563-1 250
LNAV/VNAV DA	590-1 277	590-1 277	590-1 277	590-1 277
LNAV MDA	740-1 427	740-1 427	740-1 1/4 427	740-1 1/2 427
CIRCLING	740-1 427	780-1 467	780-1 1/2 467	880-2 567

DME/DME RNP-0.3 NA. BARO-VNAV NA BELOW -15C (5F).

IF LOCAL ALTIMETER SETTING NOT RECEIVED, USE BROOKS COUNTY ALTIMETER SETTING AND INCREASE ALL DAs/MDAs 100 FEET.

VDP AND BARO-VNAV NA WHEN USING BROOKS COUNTY ALTIMETER SETTING.

CRP VORTAC: 2754.226N/09726.693W
 FEPRU: 2704.125N-09825.867W
 LIPBI: 2658.975N-09835.476W
 HEKAG: 2653.724N-09831.967W
 RW14: 2649.338N-09829.042W
 HEBIM: 2638.501N-09821.831W

SPECIALCORPUS CHRISTI
CRP4000
203 (210T)
(81.3)

5 NM
322 (329T)
142 (149T)
LIPBI

RW32

(FAF)
DUYSE(IAF)
RIKYO2000
322 (329T)
(6.5)2700
232 (239T)
(10.0)(IF)
HEBIM

MSA RW32 25 NM

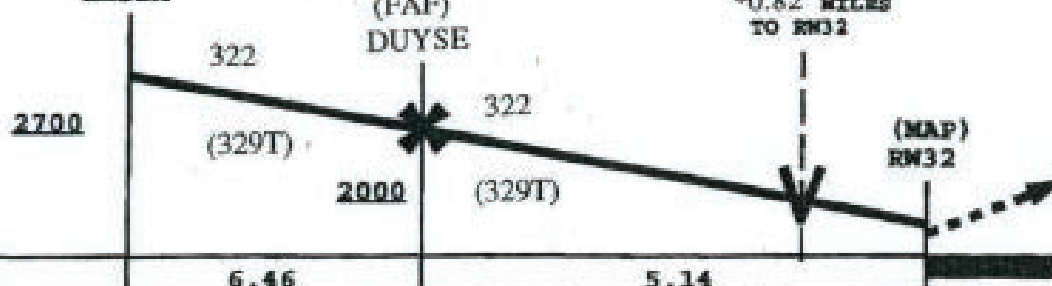
**PROTOTYPE: NOT FOR
NAVIGATION.**

2700

LIPBI

**MISSED APPROACH: CLIMB TO 2700 DIRECT LIPBI AND HOLD.**(IF)
HEBIM

*LNAV ONLY



CATEGORY	A	B	C	D
LPV DA	551-1 250	551-1 250	551-1 250	551-1 250
LNAV/VNAV DA	593-1 292	593-1 292	593-1 292	593-1 292
LNAV MDA	600-1 299	600-1 299	600-1 299	600-1 299
CIRCLING	740-1 1/4 427	780-1 1/4 467	780-1 1/2 467	880-2 567

DME/DME RNP-0.3 NA. BARO-VNAV NA BELOW -15C (5F).

IF LOCAL ALTIMETER SETTING NOT RECEIVED, USE BROOKS COUNTY
ALTIMETER SETTING AND INCREASE ALL DAs/MDAs 100 FEET.

VDP AND BARO-VNAV NA WHEN USING BROOKS COUNTY ALTIMETER SETTING.

CRP VORTAC: 2754.226N/09726.693W
 RIKYO: 2643.635N-09812.240W
 HEBIM: 2638.501N-09821.831W
 DUYSE: 2644.062N-09825.527W
 RW32: 2648.488N-09828.475W
 LIPBI: 2658.975N-09835.476W