

Flight Procedures Cover Page	Task Action: Abbreviated Amendment	Task Type: IAP	Estimated Chart Date: 10/02/2025	APWS Task ID: 849FED119ED54D13A7590DB6CA0E140D	APWS Project ID: 0CAC875D54654DD8801AC78D43F7D521
Procedure: RNAV (GPS) RWY 04		Enroute: NO	Specialist: Heiderstadt, Nicholas		Agreement Number:
Airport ID: KCJR		Airport City: CULPEPER			State: VA
Facility ID:	Facility Type:	Flight Inspection Remark Type:			

Procedure Comments:

ABBREV AMDT FOR REMOVAL OF CHART NOTE: STRAIGHT-IN RWY 4 AT NIGHT, CIRCLING RWY 4, 22 AT NIGHT, OPERATIONAL VGSI REQUIRED, REMAIN ON OR ABOVE VGSI GLIDEPATH UNTIL THRESHOLD. CONTACT DAVE DANNER 405-954-5077

07/23/2025: THIS IS A CORRECTED COPY OF THE FORM APPROVED ON 05/13/2025.
MINIMUMS LNAV: ADDED CAT A VIS 1. ADDED CAT B/C/D MDA 820/HAT 504, CAT B VIS1, AND CAT C/D VIS 1 1/2.



WAAS CH 77606 W04A	APP CRS 038°	Rwy Idg TDZE Apt Elev	5000 316 316
--	------------------------	-----------------------------	---

RNAV (GPS) RWY 4

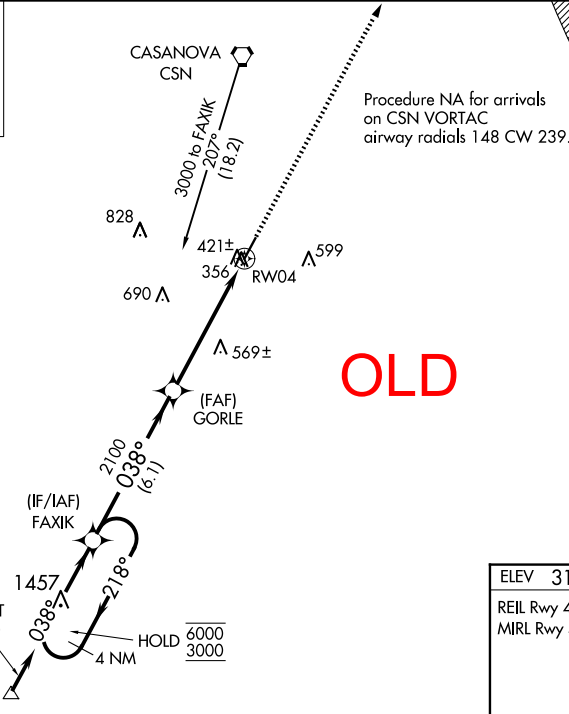
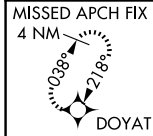
CULPEPER RGNL (CJR)

RNP APCH - GPS.

⚠ Rwy 4 helicopter visibility reduction below 1 SM NA. Baro-VNAV NA when using IAD alimeter setting. For uncompensated Baro-VNAV systems, LNAV/VNAV NA below -15°C or above 48°C. When local alimeter setting not received, use IAD alimeter setting and increase LPV DA to 683 feet; increase LNAV/VNAV DA to 906 feet; increase all MDAs 80 feet and visibility Cats C/D ¼ SM. Straight-in Rwy 4 at night, Circling Rwy 4, 22 at night, operational VGSI required, remain on or above VGSI glidepath until threshold.

MISSED APPROACH:
Climb to 3000 direct DOYAT and hold.

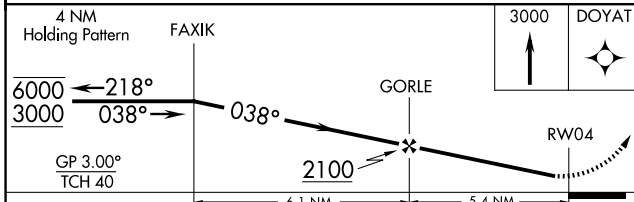
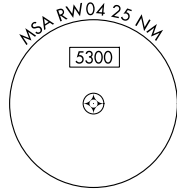
AWOS-3 119.325	POTOMAC APP CON 128.525 306.925	CLNC DEL 121.6	UNICOM 123.075 (CTAF)
--------------------------	---	--------------------------	---------------------------------



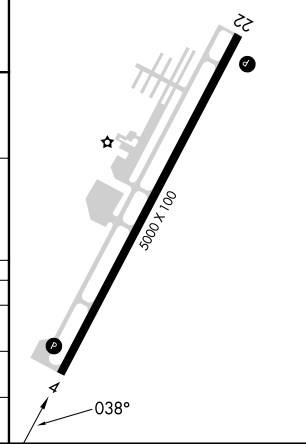
WARNING --
WASHINGTON DC SFRA.
CONTACT POTOMAC APP CON

WASHINGTON DC METROPOLITAN SFRA

OLD



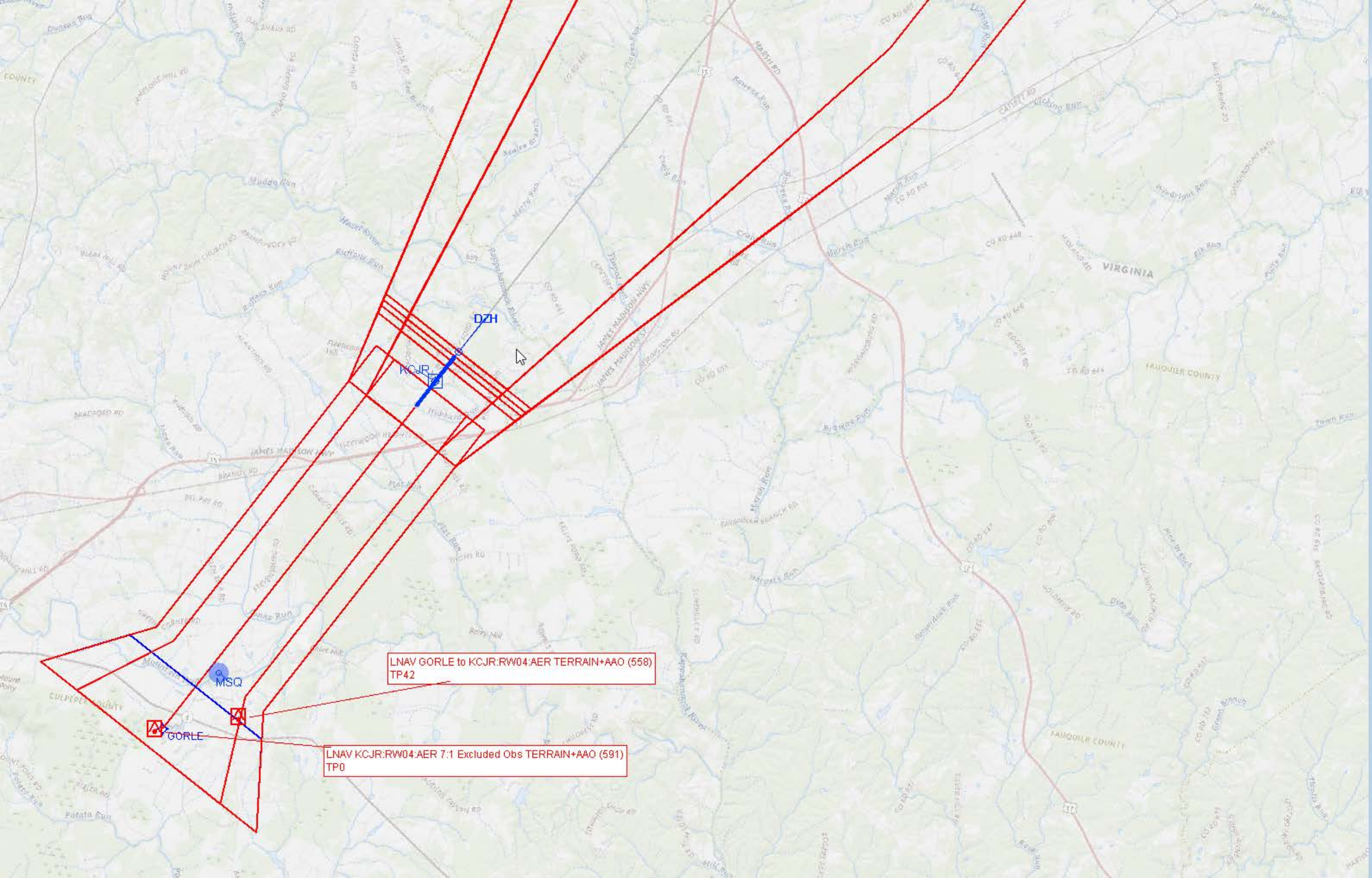
ELEV 316	TDZE 316
REIL Rwy 4 and 22	MIRL Rwy 4-22



CATEGORY	A	B	C	D
LPV DA	610-1 294 (300-1)			
LNAV/VNAV DA	833-1¾ 517 (600-1¾)			
LNAV MDA	820-1 504 (600-1)		820-1½ 504 (600-1½)	

NE-3, 17 APR 2025 to 15 MAY 2025

NE-3, 17 APR 2025 to 15 MAY 2025



LNAV GORLE to KCJR:RW04:AER TERRAIN+AAO (558)
TP42

LNAV KCJR:RW04:AER 7:1 Excluded Obs TERRAIN+AAO (591)
TP0