

Flight Procedures Cover Page	Task Action: P-NOTAM	Task Type: IAP	Estimated Chart Date: 09/03/2026	APWS Task ID: 85B6FEAF73A045DF8BA355E6792E97A0	APWS Project ID: 948139BAB1FD4123BCF441193490F40B
Procedure: RNAV (GPS) RWY 6 AMDT 1B		Enroute: NO	Specialist: Johnson, Timothy		Agreement Number:
Airport ID: KLKR			Airport City: LANCASTER		State: SC
Facility ID:	Facility Type:	Flight Inspection Remark Type:			

Procedure Comments:

Visibility Initiative (Garmin) - Update IAP visibility minimums IAW Order 8260.3, Chapter 3, Section 3-3. Visibility Minimums.

PROCESSED IAW TECHNICAL SUPPORT GROUP (AJF-17) MEMO DATED 07/07/2021, SUBJECT: GUIDANCE FOR PROCEDURAL CHANGES REQUIRING FLIGHT INSPECTION/VALIDATION.

CONTACT: CASEY HILL (405) 954-0624.



WAAS CH 86816 W06A	APP CRS 065°	Rwy Idg TDZE Apt Elev	5899 470 486
--	------------------------	-----------------------------	---

RNAV (GPS) RWY 6
LANCASTER COUNTY-MC WHIRTER FLD (LKR)

⚠ When VGSI inoperative, Circling Rwy 24 NA at night. Baro-VNAV NA when using Rock Hill altimeter setting. For uncompensated Baro-VNAV systems, LNAV/VNAV NA below -15°C (5°F) or above 48°C (118°F). DME/DME RNP -0.3 NA. When local altimeter setting not received, use Rock Hill altimeter setting and increase LPV DA 69 feet, LNAV/VNAV DA 98 feet and all MDA 80 feet, and increase LPV, LNAV/VNAV all Cats, LNAV and Circling Cats C and D visibilities ¼ mile. VDP NA when using Rock Hill altimeter setting.

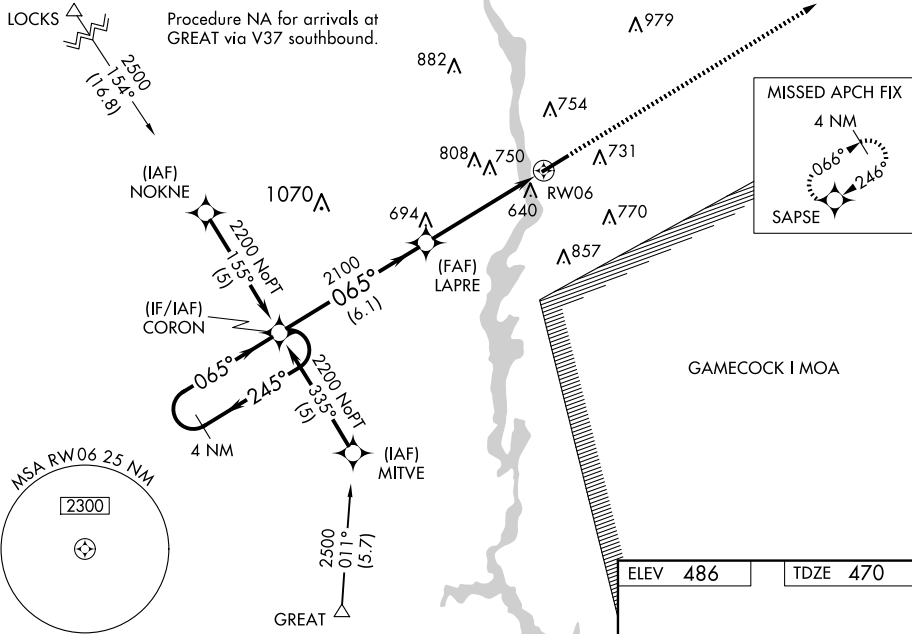
MISSED APPROACH:
Climb to 2500 direct SAPSE and hold.

AWOS-3
120.825

CHARLOTTE APP CON
120.05 307.8

GCO
121.725

UNICOM
122.725 (CTAF) 0



SE-2, 19 MAR 2026 to 16 APR 2026

SE-2, 19 MAR 2026 to 16 APR 2026

4 NM Holding Pattern

CORON

2500

SAPSE

2200 ← 245°
065° →
GP 3.00°
TCH 47

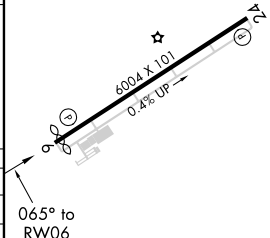
LAPRE

*LNAV only.

2100

*1.4 NM to RW06

RW06



CATEGORY	A	B	C	D
LPV DA		670-¾	200 (200-¾)	
LNAV/VNAV DA		993-2	523 (600-2)	
LNAV MDA	940-1	470 (500-1)	940-1½ 470 (500-1½)	940-1½ 470 (500-1½)
CIRCLING	1040-1 554 (600-1)	1060-1 574 (600-1)	1120-1¾ 634 (700-1¾)	1160-2½ 674 (700-2½)

MIRL Rwy 6-24 0
REIL Rws 6 and 24 0