

Flight Procedures Cover Page	Task Action: Abbreviated Amendment	Task Type: SID	Estimated Chart Date: 05/14/2026	APWS Task ID: 865544FF2B794B29BAF179B2400B5716	APWS Project ID: 79EF235D08CB415BA07DB92533F44CEA
Procedure: BOBZY SIX DEPARTURE (RNAV)		Enroute: YES	Specialist: Keefer, John		Agreement Number:
Airport ID: KCLT		Airport City: CHARLOTTE		State: NC	
Facility ID:	Facility Type:	Flight Inspection Remark Type:			

Procedure Comments:
Runway renumber from 18R/36L to 19R/01L.
Pending data used for CLT: 5/14/2026.
Active data used for satellite airports.
PROCESSED IAW TECHNICAL SUPPORT (AJF-17) MEMO DATED 07/07/2021, SUBJECT: GUIDANCE FOR PROCEDURAL CHANGES REQUIRING FLIGHT INSPECTION/VALIDATION.
Contact Casimir Tabaka 405-954-7931.
3/10/26: THIS IS A CORRECTED COPY OF THE FORMS APPROVED ON 12/5/25.
1. ADDITIONAL FLIGHT DATA: REPLACE MEA/MOCA FROM GULFY TO BARMY, 10,400/2100 WITH MEA/MOCA FROM YNGUN TO BOBZY, 7000/2400.



BOBZY FIVE DEPARTURE (RNAV)

AL-78 (FAA)

CHARLOTTE/DOUGLAS INTL (CLT)
CHARLOTTE, NORTH CAROLINA

SE-2, 'Z' 02 OCT 2025 to 30 OCT 2025

RNAV 1-DME/DME/IRU or GPS.
RADAR required.

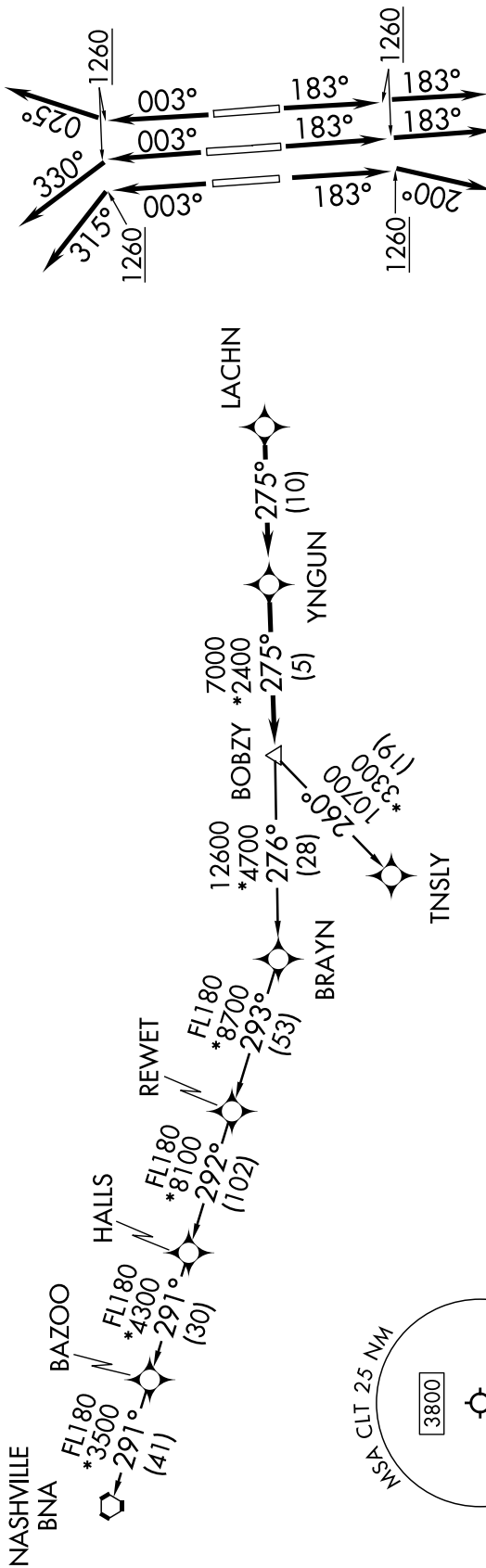
TOP ALTITUDE:
8000

CHARLOTTE DEP CON
120.5 257.2
D-ATIS DEP 132.1
CLNC DEL
127.15 348.6
CPDIC
GND CON
121.8 348.6 (WEST)
121.9 348.6 (EAST)
CHARLOTTE TOWER
118.1 257.8 (Rwys 18L-36R)
126.4 257.8 (Rwy 18C-36C)
133.35 257.8 (Rwy 18R-36L)

- NOTE: For turbo jets only.
- NOTE: If unable to accept climb rates, advise ATC on initial contact.
- NOTE: Transponder code will be issued via PDC or Charlotte CLNC DEL.
- NOTE: Accelerate to 250K, if unable advise ATC. Upon reaching 10000 MSL, accelerate to and maintain 280K, if unable advise ATC.

TAKEOFF MINIMUMS

Rwys 18L/C/R, 36C/R: Standard with minimum climb of 500' per NM to 1260.
Rwy 36L: Standard with minimum climb of 500' per NM to 1400.



NOTE: Chart not to scale.

(CONTINUED ON FOLLOWING PAGE)

SE-2, 02 OCT 2025 to 30 OCT 2025

BOBZY FIVE DEPARTURE (RNAV)



DEPARTURE ROUTE DESCRIPTION
SEE ADDITIONAL REQUIREMENTS ON AAUP

TAKEOFF RUNWAYS 18L/C: Climb on heading 183° to 1260, then on heading 183° or as assigned by ATC on RADAR vectors to LACHN, thence. . . .

TAKEOFF RUNWAY 18R: Climb on heading 183° to 1260, then on heading 200° or as assigned by ATC on RADAR vectors to LACHN, thence. . . .

TAKEOFF RUNWAY 36L: Climb on heading 003° to 1260, then on heading 315° or as assigned by ATC on RADAR vectors to LACHN, thence. . . .

TAKEOFF RUNWAY 36C: Climb on heading 003° to 1260, then on heading 330° or as assigned by ATC on RADAR vectors to LACHN, thence. . . .

TAKEOFF RUNWAY 36R: Climb on heading 003° to 1260, then on heading 025° or as assigned by ATC on RADAR vectors to LACHN, thence. . . .

. . . .on depicted route to BOBZY, then on assigned transition. Maintain 8000.
Expect clearance to filed altitude within 10 minutes after departure.

NASHVILLE TRANSITION (BOBZY5.BNA)

TNSLY TRANSITION (BOBZY5.TNSLY)

SE-2, 02 OCT 2025 to 30 OCT 2025

SE-2, 02 OCT 2025 to 30 OCT 2025