

Flight Procedures Cover Page	Task Action: FLIGHT CHECK	Task Type: Graphical DP	Estimated Chart Date: 06/12/2025	APWS Task ID: 871355F7535647BABAA5B06C8EA61D60	APWS Project ID: 6AEBEB0442FC4CDAB478B43974CB2AB3
Procedure: ATASY THREE DEPARTURE (OBSTACLE) (RNAV)		Enroute: YES	Specialist: Pipkin, Ryan		Agreement Number:
Airport ID: KTDO		Airport City: TOLEDO			State: WA
Facility ID:	Facility Type:	Flight Inspection Remark Type: New FC Slot			
<div>Procedure Comments:</div> <div>DEVELOPED USING ACTIVE AIRNAV DATA FOR KTDO.</div> <div>CLEAR NOTAM FDC 3/7110. CLARIFIED DP ROUTE DESCRIPTION. UPDATED TAKEOFF OBSTACLE NOTES.</div> <div>CONTACT JOHN BORDY - 405-954-0980</div> <div>03/26/25: THIS IS A CORRECTED COPY OF THE FORM APPROVED ON 06/12/25.</div> <div>1. ADDITIONAL FLIGHT DATA: CHART NOTE HOLDING PATTERN FIX NAME CHANGED FROM ATSAY TO ATASY.</div> <div><div>QUALITY 41 CHECKED</div><div>QUALITY 8 CHECKED</div></div>					

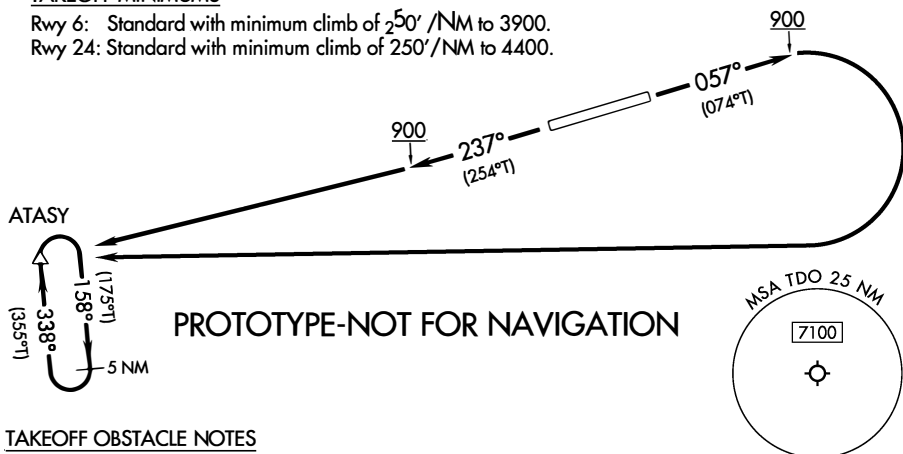
[illegible]

RNAV 1 - GPS.

SEATTLE CENTER  
124.2 317.6TAKEOFF MINIMUMS

Rwy 6: Standard with minimum climb of 250' /NM to 3900.

Rwy 24: Standard with minimum climb of 250' /NM to 4400.

TAKEOFF OBSTACLE NOTES

Rwy 6: Wind indicator, tower, fence, tree beginning 6' from DER, 158' left of centerline, up to 20' AGL/390' MSL.

Trees beginning 16' from DER, 257' right of centerline, up to 20' AGL/393' MSL.

Trees beginning 188' from DER, 16' right of centerline, up to 396' MSL.

Tree 600' from DER, 277' right of centerline, 29' AGL/400' MSL.

Tree 813' from DER, 378' right of centerline, 32' AGL/404' MSL.

Tree 1568' from DER, 903' left of centerline, 47' AGL/423' MSL.

Rwy 24: Tree 16' from DER, 384' left of centerline, 39' AGL/396' MSL.

Pole 64' from DER, 356' right of centerline, 20' AGL/372' MSL.

Buildings beginning 77' from DER, 407' right of centerline, up to 28' AGL/378' MSL.

Tree 107' from DER, 269' left of centerline, 48' AGL/402' MSL.

Pole 225' from DER, 371' right of centerline, 31' AGL/381' MSL.

Tree 226' from DER, 404' right of centerline, 384' MSL.

Tree 249' from DER, 379' right of centerline, 386' MSL.

Light poles, towers, traverse way, trees beginning 276' from DER, 135' right of centerline, up to 80' AGL/435' MSL.

Trees, traverse way beginning 336' from DER, 83' left of centerline, up to 54' AGL/405' MSL.

Trees beginning 2331' from DER, 191' right of centerline, up to 102' AGL/445' MSL.

Trees beginning 2420' from DER, 211' right of centerline, up to 130' AGL/472' MSL.

Trees beginning 2524' from DER, 35' right of centerline, up to 138' AGL/481' MSL.

Tree 2720' from DER, 1090' left of centerline, 94' AGL/446' MSL.

Tree 2841' from DER, 38' left of centerline, 108' AGL/453' MSL.

Trees beginning 2974' from DER, 31' right of centerline, up to 482' MSL.

NOTE: Chart not to scale.

## DEPARTURE ROUTE DESCRIPTION

TAKEOFF RUNWAY 6: Climb on heading 057° to 900, then climbing right turn to 5000 direct ATASY and hold, thence. . . .

TAKEOFF RUNWAY 24: Climb on heading 237° to 900, then climb to 5000 direct ATASY and hold, thence. . . .

. . . .Continue climb-in-hold to 5000 before proceeding on course.

When authorized by ATC, continue climb to 6000 before proceeding on course.

OLD

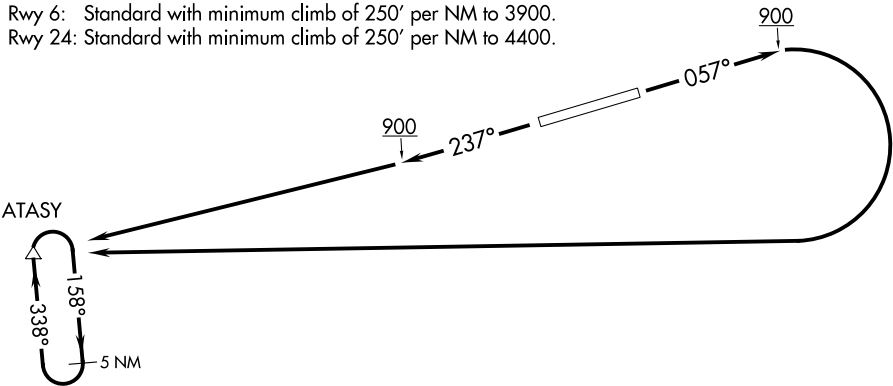
SEATTLE CENTER  
124.2 317.6

TAKEOFF OBSTACLE NOTES

- Rwy 6: Antenna 9' from DER, 344' left of centerline, 16' AGL/390' MSL.  
Trees beginning 190' from DER, 12' right of centerline, up to 27' AGL/397' MSL.
- Rwy 24: Trees, buildings, and airport beacon on tower beginning 53' from DER, 328' right of centerline, up to 71' AGL/432' MSL. Trees 434' from DER, 267' left of centerline, 26' AGL/381' MSL. Vehicle on road 529' from DER, 83' left of centerline, 13' AGL/370' MSL. Trees beginning 2525' from DER, 72' right of centerline, up to 141' AGL/482' MSL.

TAKEOFF MINIMUMS

- Rwy 6: Standard with minimum climb of 250' per NM to 3900.
- Rwy 24: Standard with minimum climb of 250' per NM to 4400.



NOTE: RNAV 1.

NOTE: GPS required.

NOTE: Chart not to scale.

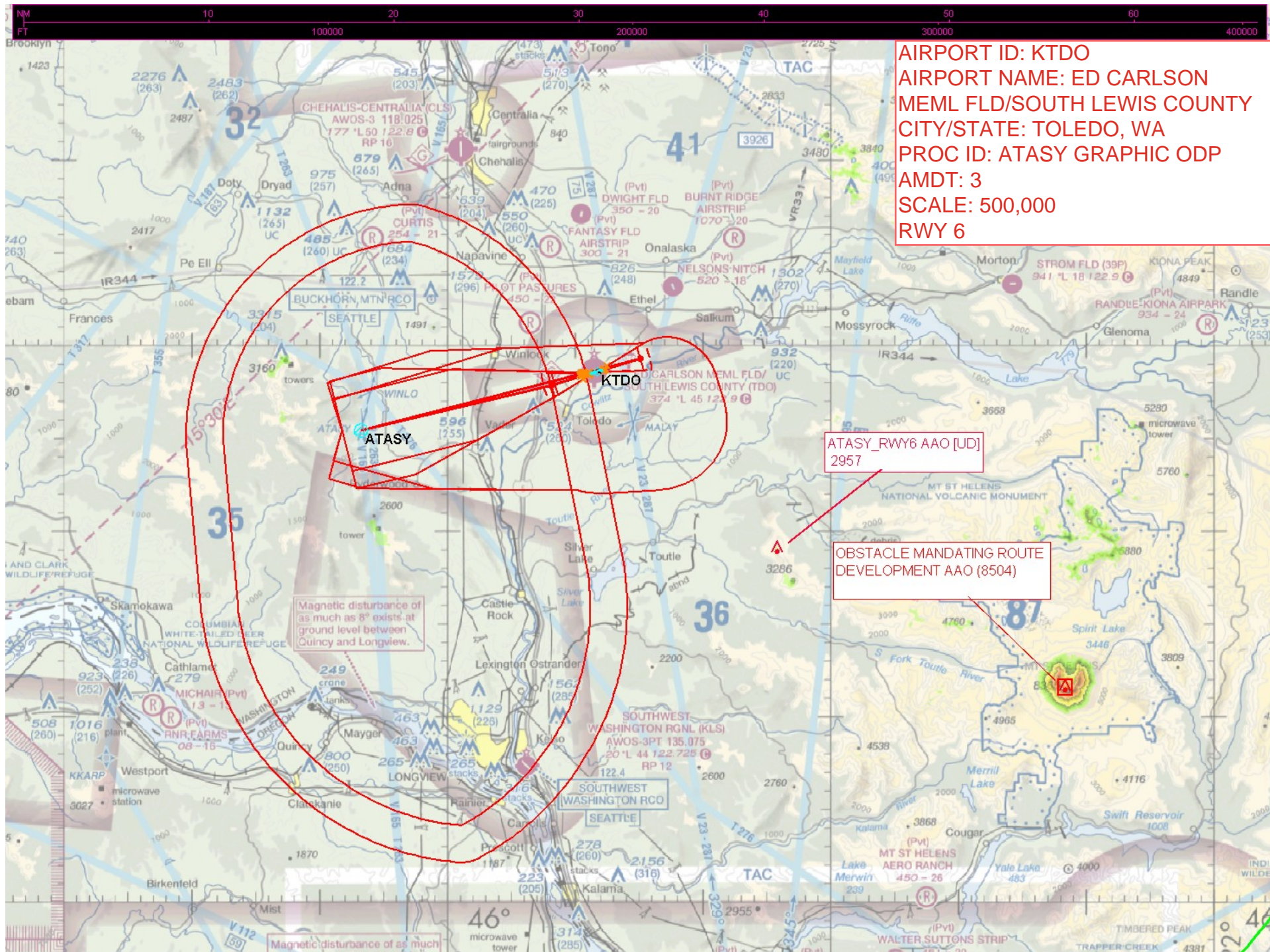
DEPARTURE ROUTE DESCRIPTION

TAKEOFF RUNWAY 6: Climb heading 057° to 900, then climbing right turn to 5000 direct ATASY and hold, continue climb-in-hold to 5000, when authorized by ATC, continue climb-in-hold to 6000, thence. . . .

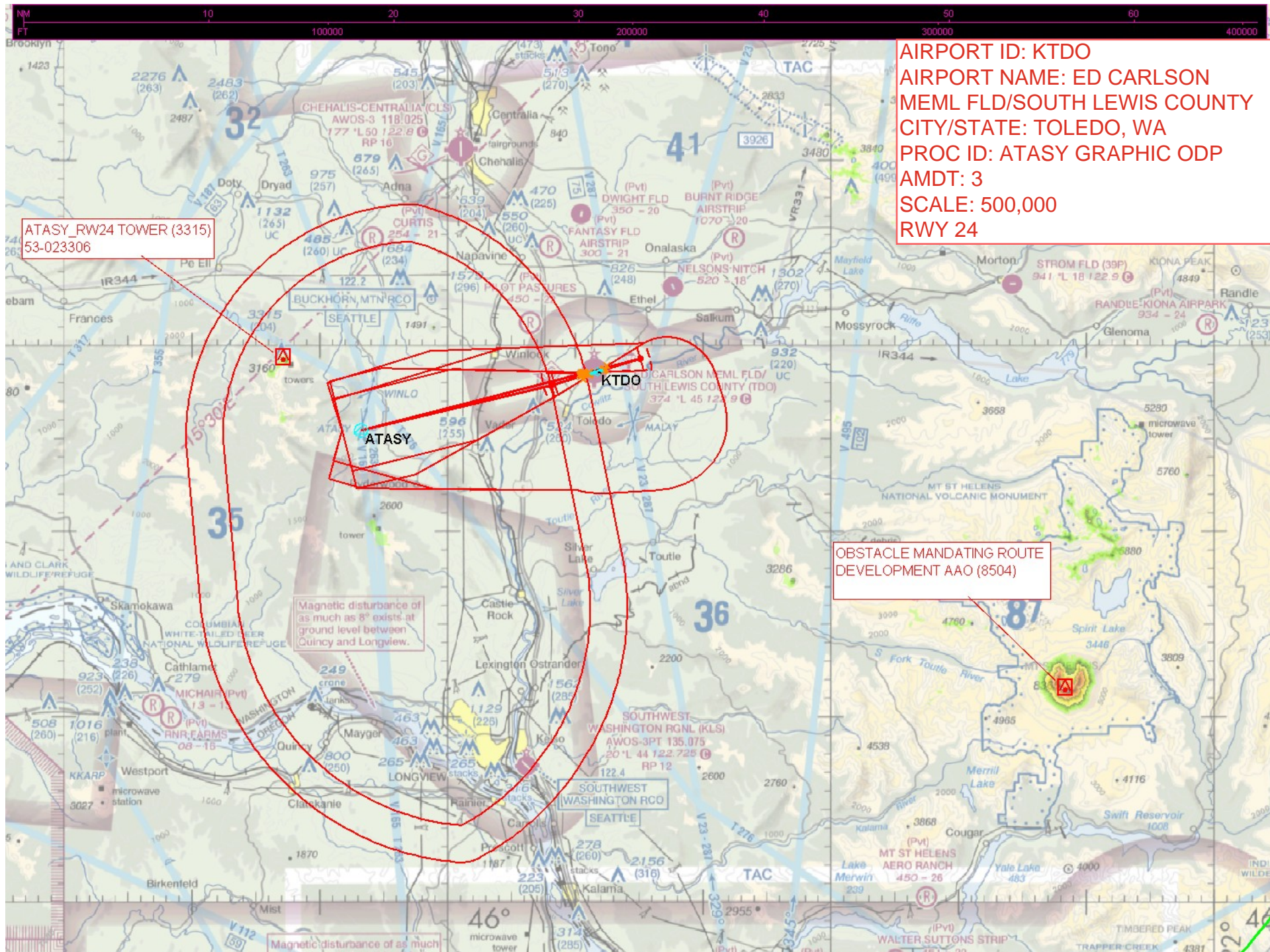
TAKEOFF RUNWAY 24: Climb heading 237° to 900, then climb to 5000 direct ATASY and hold, continue climb-in-hold to 5000, when authorized by ATC, continue climb-in-hold to 6000, thence. . . .

. . . .Expect filed altitude 10 minutes after departure.



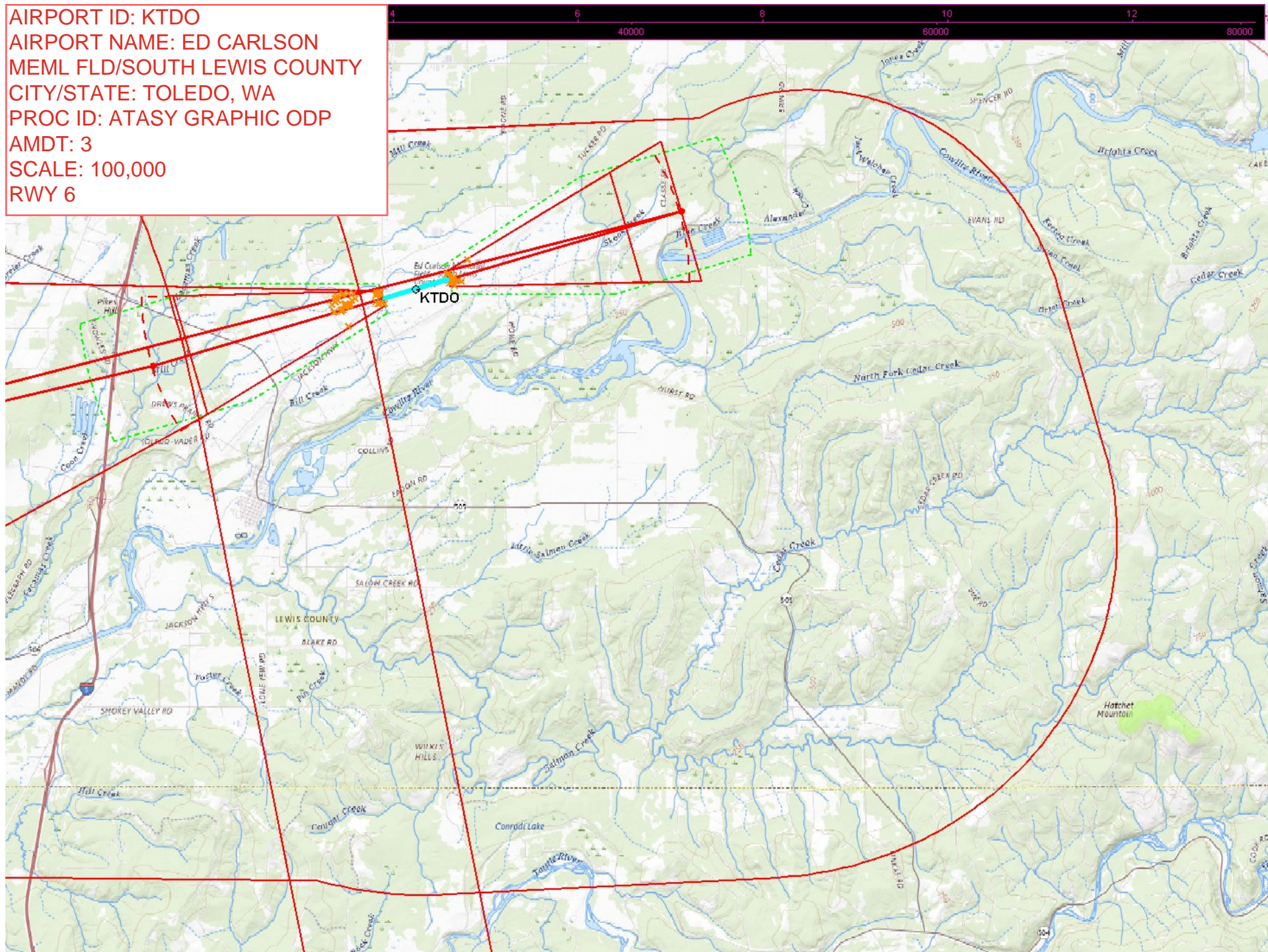








AIRPORT ID: KTDO  
AIRPORT NAME: ED CARLSON  
MEML FLD/SOUTH LEWIS COUNTY  
CITY/STATE: TOLEDO, WA  
PROC ID: ATASY GRAPHIC ODP  
AMDT: 3  
SCALE: 100,000  
RWY 6





AIRPORT ID: KTDO  
AIRPORT NAME: ED CARLSON  
MEML FLD/SOUTH LEWIS COUNTY  
CITY/STATE: TOLEDO, WA  
PROC ID: ATASY GRAPHIC ODP  
AMDT: 3  
SCALE: 100,000  
RWY 24

