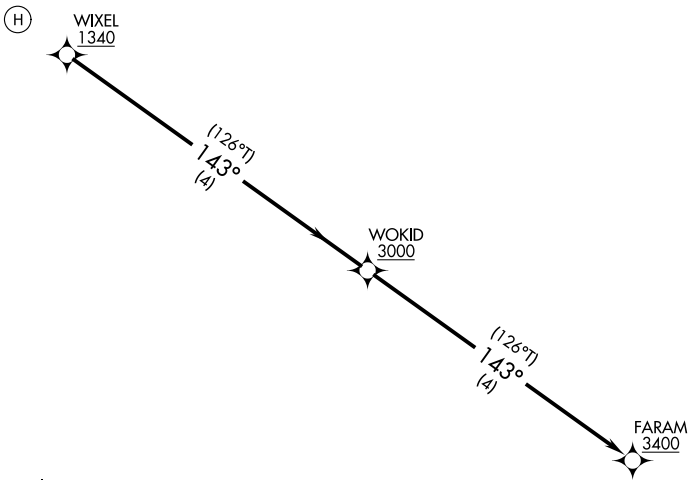


PORTLAND APP CON ★  
125.5 269.35  
BOSTON CENTER  
128.2 263.05  
CTAF  
122.9 **0**

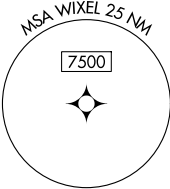
RNP 0.3 - GPS. AP.

**TOP ALTITUDE:  
ASSIGNED BY ATC**

PROTOTYPE-NOT FOR NAVIGATION



- NOTE: Pilot must ensure CDI sensitivity is set to 0.3 NM.  
CDI may be reset to 1 NM after FARAM as applicable.
- NOTE: Use OB1 altimeter setting; when not received, use AUG altimeter setting and cross WIXEL at or above 1500.
- NOTE: Use of this procedure requires specific authorization by FAA Flight Standards.



NOTE: Chart not to scale.

DEPARTURE ROUTE DESCRIPTION

- VFR SEGMENT: VFR climb to WIXEL, cross WIXEL at or above 1340 on track 143°.
- IFR SEGMENT: From WIXEL, climb on track 143° to cross WOKID at or above 3000, then on track 143° to cross FARAM at or above 3400.