

Flight Procedures Cover Page	Task Action: FLIGHT CHECK	Task Type: IAP	Estimated Chart Date: 03/19/2026	APWS Task ID: 88A7983D8DDC494B8C9EA5FA050CC0AD	APWS Project ID: 74166A518FF948E5AFF907A25152E9CE
Procedure: RNAV (GPS) Y RWY 16L AMDT 2		Enroute: NO	Specialist: Dumar, Ralph		Agreement Number:
Airport ID: KDEN			Airport City: DENVER		State: CO
Facility ID:	Facility Type:	Flight Inspection Remark Type: Hold FC Slot			

Procedure Comments:
AIRPORT ACTIVE DATA USED.

REMARKS: NEW MISSED APPROACH, ADDED INITIAL SEGMENT JEEPR-JOBOB.
CONTACT RAKE MCGRAW (AJV-A422)- 405-954-8711

QUALITY
38
CHECKED

QUALITY
37
CHECKED

RNAV (GPS) Y RWY 16L

DENVER INTL (DEN)

WAAS CH 99307 W16A	APP CRS 173°	Rwy Ldg 12000 TDZE 5357 Apt Elev 5434
--	------------------------	--

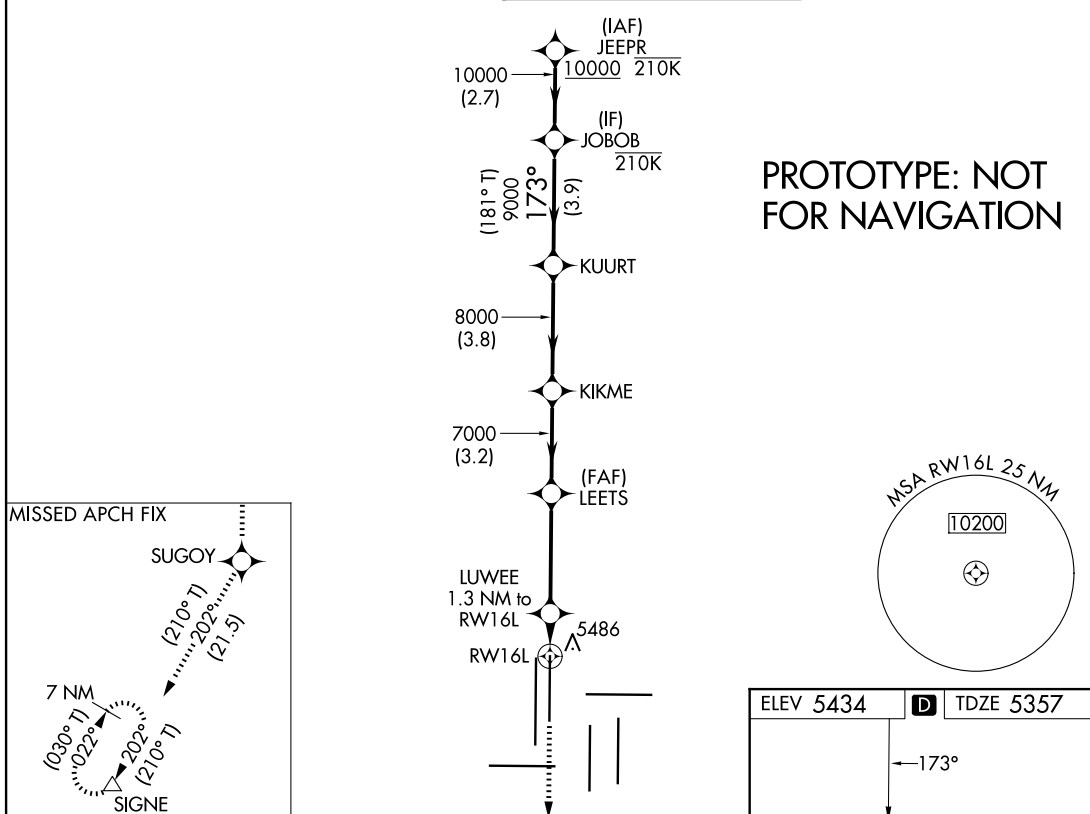
RNP APCH - GPS.

Simultaneous approach authorized. LNAV procedure NA during simultaneous operations. Use of FD or AP required during simultaneous operations. For uncompensated Baro-VNAV systems, procedure NA below -26°C or above 54°C. For inoperative ALS, increase LNAV/VNAV all Cats visibility and LNAV Cats C/D visibility to RVR 4500.

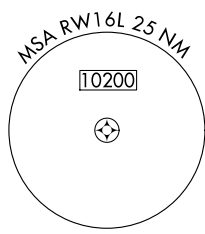


MISSED APPROACH:
Climb to 10000 direct SUGOY and on track 202° direct SIGNE hold.

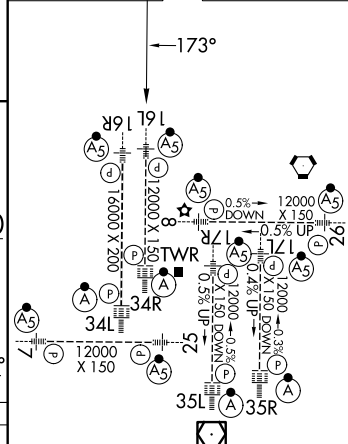
D-ATIS 125.6 379.9	DENVER APP CON 119.3 307.3 (N) 120.35 379.3 (S)	DENVER TOWER 135.3 351.95	GND CON 121.35 379.175 (W) 121.85 377.1 (E)
------------------------------	---	-------------------------------------	---



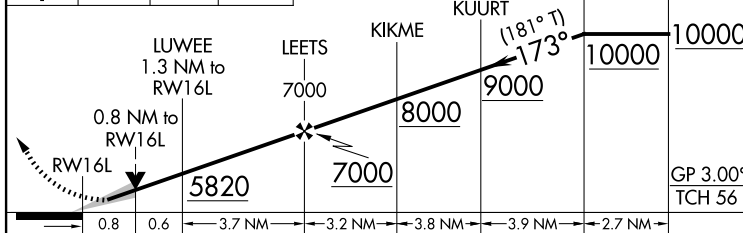
PROTOTYPE: NOT FOR NAVIGATION



ELEV 5434	D	TDZE 5357
-----------	----------	-----------



10000	SUGOY	SIGNE	VGSI and RNAV glidepath not coincident (VGSI Angle 3.00/TCH 71).
↑	✧	△	
	trk 202°		



CATEGORY	A	B	C	D
LPV DA		5557/18	200 (200-½)	
LNAV/VNAV DA		5647/24	290 (300-½)	
LNAV MDA		5660/24	303 (300-½)	

HIRL all Rwys
TDZ/CL Rwys 7, 16L, 16R, 17R, 26, 34L, 34R, 35L, 35R

AUTOMATED AL-9077 RNAV (GPS) Y RWY 16L

SW-1
2 SEPT 2025
COMPILER: CG
REVIEWER:
DBL CHKR:
EFF: FIG

WAAS CH 99307 W16A	APP CRS 173°	Rwy Idg 12000 TDZE 5357 Apt Elev 5434
--	------------------------	--



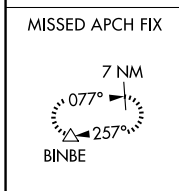
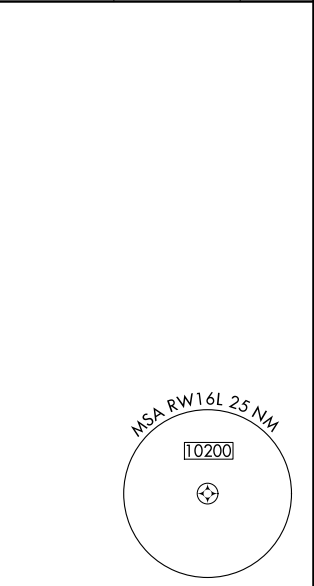
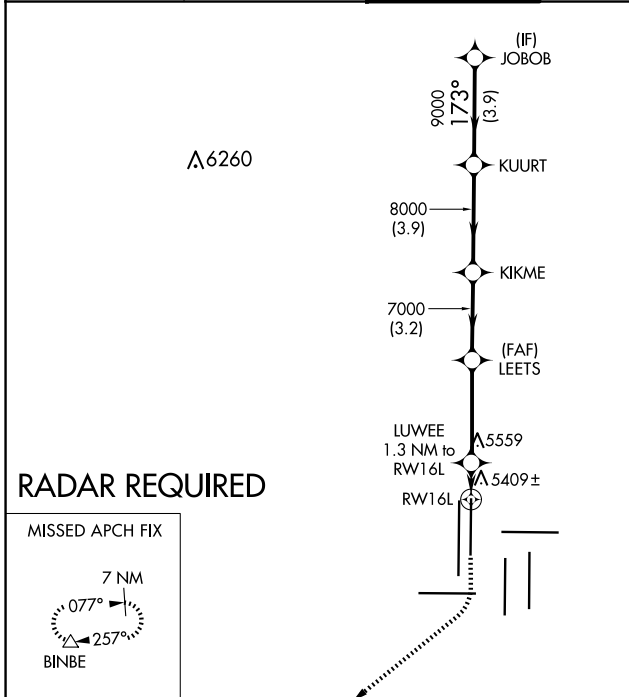
RNAV (GPS) Y RWY 16L

DENVER INTL (DEN)

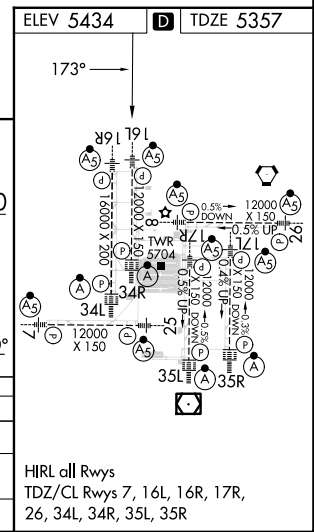
▽ For uncompensated Baro-VNAV systems, LNAV/VNAV NA below -25°C (-13°F) or above 45°C (114°F). Simultaneous approach authorized with Rwy 17 L/R. DME/DME RNP -0.3 NA. LNAV procedure NA during simultaneous operations. For inoperative MALSR, increase LNAV/VNAV all Cats, and LNAV Cats C/D visibility to RVR 4500. Use of FD or AP providing RNAV track guidance required during simultaneous operations.

MALSR
 MISSED APPROACH: Climb to 5900 then climbing right turn to 10000 direct BINBE and hold, continue climb-in-hold to 10000.

D-ATIS 125.6 379.9 (ARR) 134.025 (DEP)	DENVER APP CON 119.3 307.3 (N) 120.35 379.3 (S)	DENVER TOWER 135.3 351.95	GND CON 121.35 379.175 (W) 121.85 377.1 (E)	CLNC DEL 118.75	CPDLC
--	---	-------------------------------------	---	---------------------------	-------



5900	10000	BINBE	VGSI and RNAV glidepath not coincident (VGSI Angle 3.00/TCH 71).				JOBBO
*LNAV only	LUWEE 1.3 NM to RW16L	LEETS	KIKME	KUURT	10000		
	*0.8 NM to RW16L	7000	8000	9000	173°	GP 3.00° TCH 60	
		5820*					
	0.8	0.5	3.7 NM	3.2 NM	3.9 NM	3.9 NM	
CATEGORY	A	B	C	D			
LPV DA		5557/18	200 (200-½)				
LNAV/VNAV DA		5647/24	290 (300-½)				
LNAV MDA		5660/24	303 (300-½)				



SW-1, 17 APR 2025 to 15 MAY 2025

SW-1, 17 APR 2025 to 15 MAY 2025

KDEN
Denver Intl
Denver, CO
RNAV (GPS) Y Rwy 16L, Amdt 2
1:500,000

Initial JEEPR-JOB0B
AAO (5273)

Intermediate JOB0B-KUURT
AAO (5325)

Intermediate KUURT-KIKME
AAO (5368)

Intermediate KIKME-LEETS
AAO (5384)

Missed Lvl Sfc
AAO (6779)

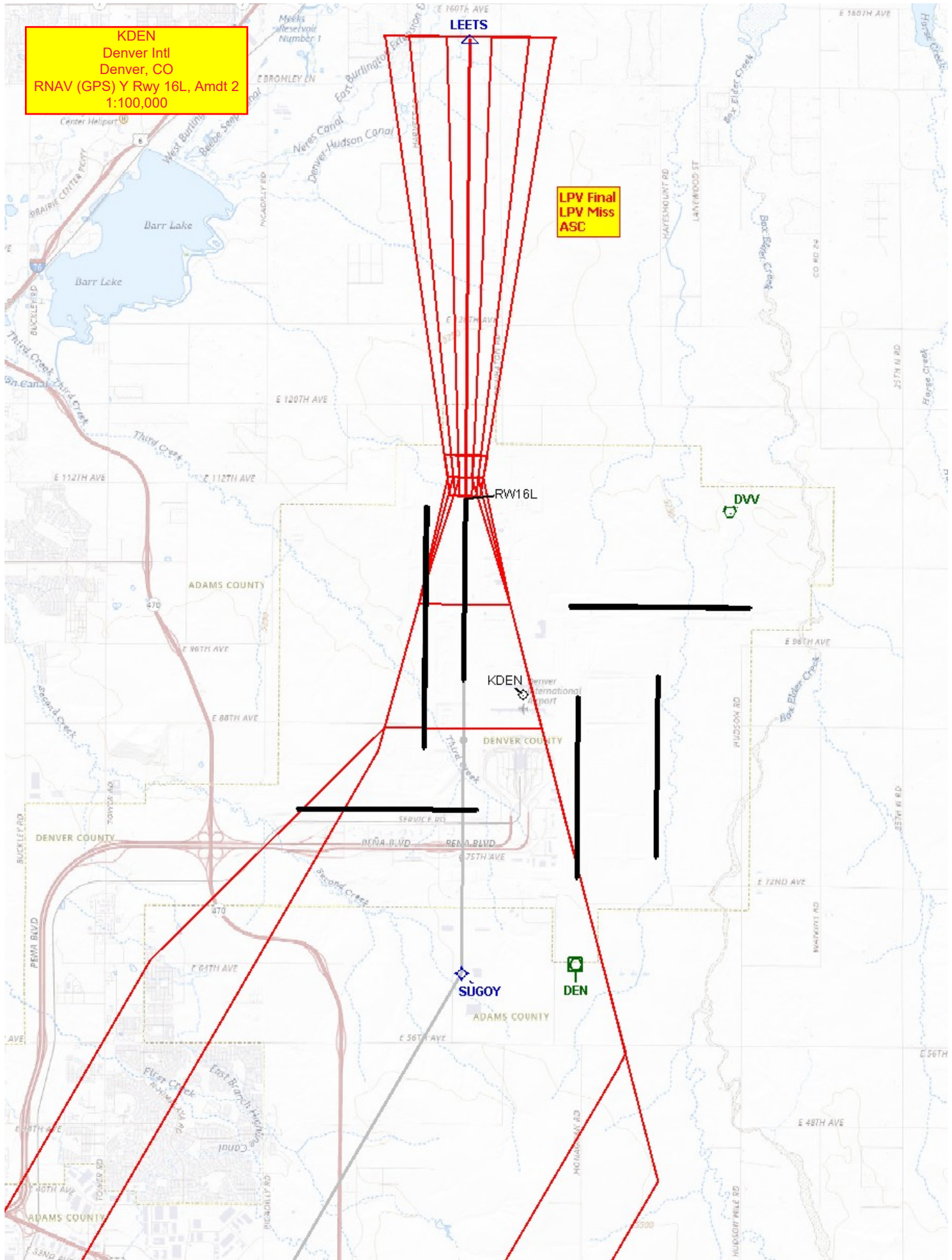
CAUTION
INTENSIVE STUDENT PILOT TRAINING AREA
CTC SW PRACTICE AREA ON 122.75

CAUTION
INTENSIVE STUDENT PILOT TRAINING AREA
CTC SE PRACTICE AREA ON 122.75



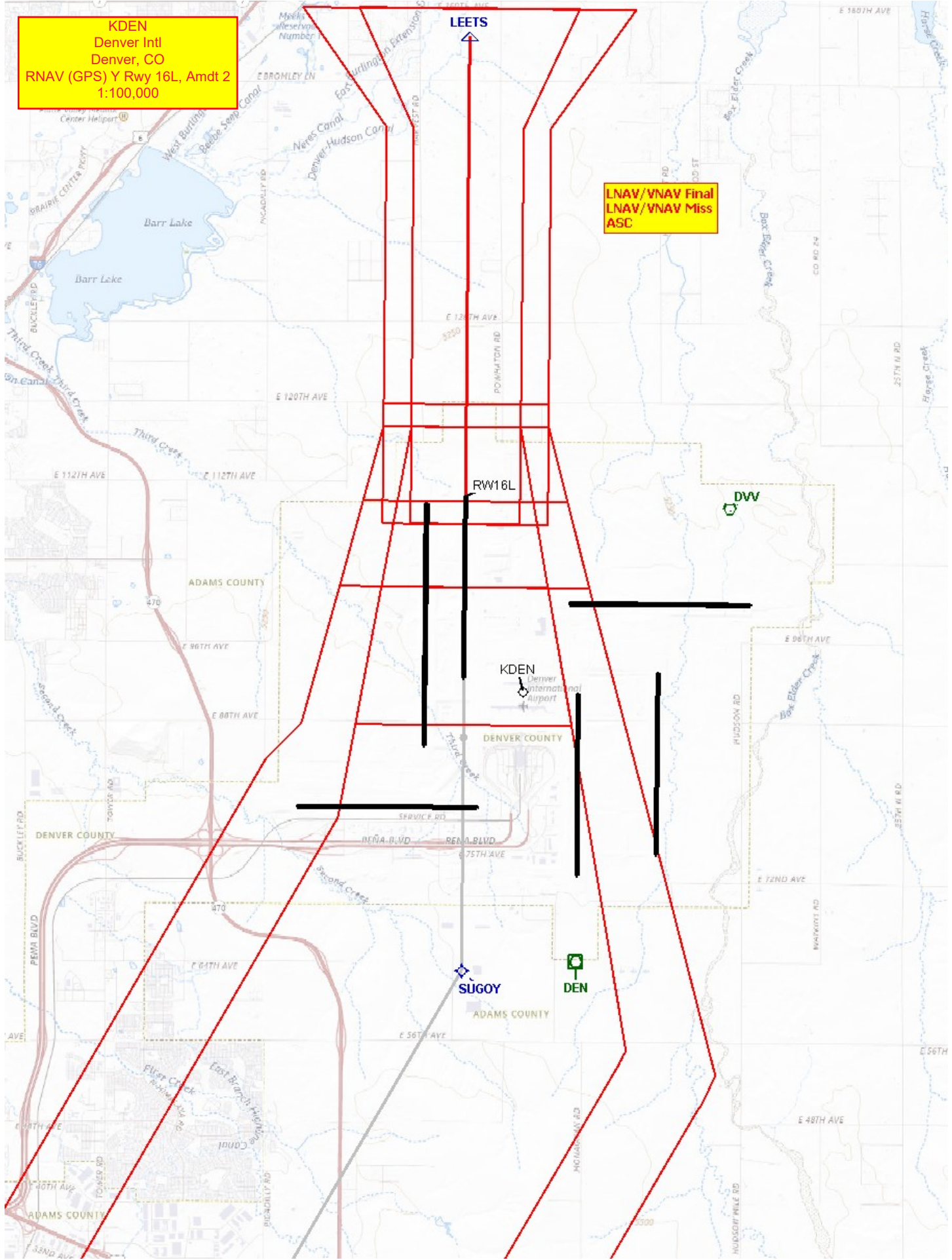
KDEN
Denver Intl
Denver, CO
RNAV (GPS) Y Rwy 16L, Amdt 2
1:100,000

**LPV Final
LPV Miss
ASC**



KDEN
Denver Intl
Denver, CO
RNAV (GPS) Y Rwy 16L, Amdt 2
1:100,000

**RNAV/VNAV Final
RNAV/VNAV Miss
ASC**



KDEN
Denver Intl
Denver, CO
RNAV (GPS) Y Rwy 16L, Amdt 2
1:100,000

LEETS

**LNAV Final
AAO (5414)**

**LNAV Stepdown
POLE (5486)
08-022335**

LWEE

RW16L

KDEN
Denver International
airport

SUGOY

DEN

