

Flight Procedures Cover Page	Task Action: P-NOTAM	Task Type: IAP	Estimated Chart Date: 09/03/2026	APWS Task ID: 8916452732E244669F3E1E1B7FC5CA9E	APWS Project ID: 90076120D07041398861FF2CF84D47F0
Procedure: RNAV (RNP) X RWY 33L AMDT 0A		Enroute: NO	Specialist: Smith, Bryant		Agreement Number:
Airport ID: KBWI			Airport City: BALTIMORE		State: MD
Facility ID:	Facility Type:	Flight Inspection Remark Type:			

Procedure Comments:

P-NOTAM adds Simultaneous Approach note to IAP.

PROCESSED IAW TECHNICAL SUPPOSRT GROUP (AJF-17) MEMO DATED 07/07/2021, SUBJECT: GUIDANCE FOR PROCEDURAL CHANGES REQUIRING FLIGHT INSPECTION/VALIDATION

CONTACT: ROB HAMILTON A433 MANAGER, 405-954-4608

QUALITY
16
CHECKED

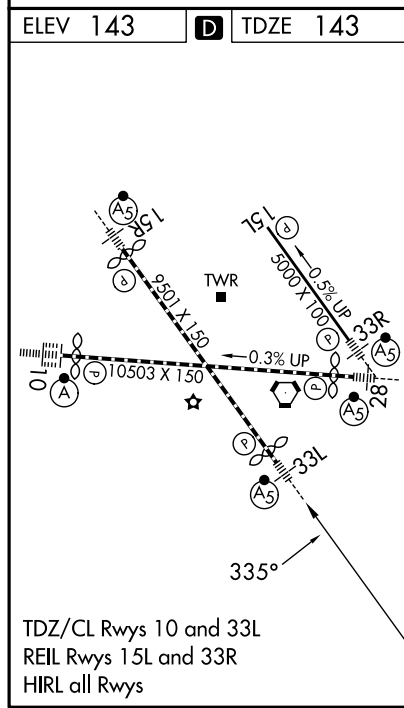
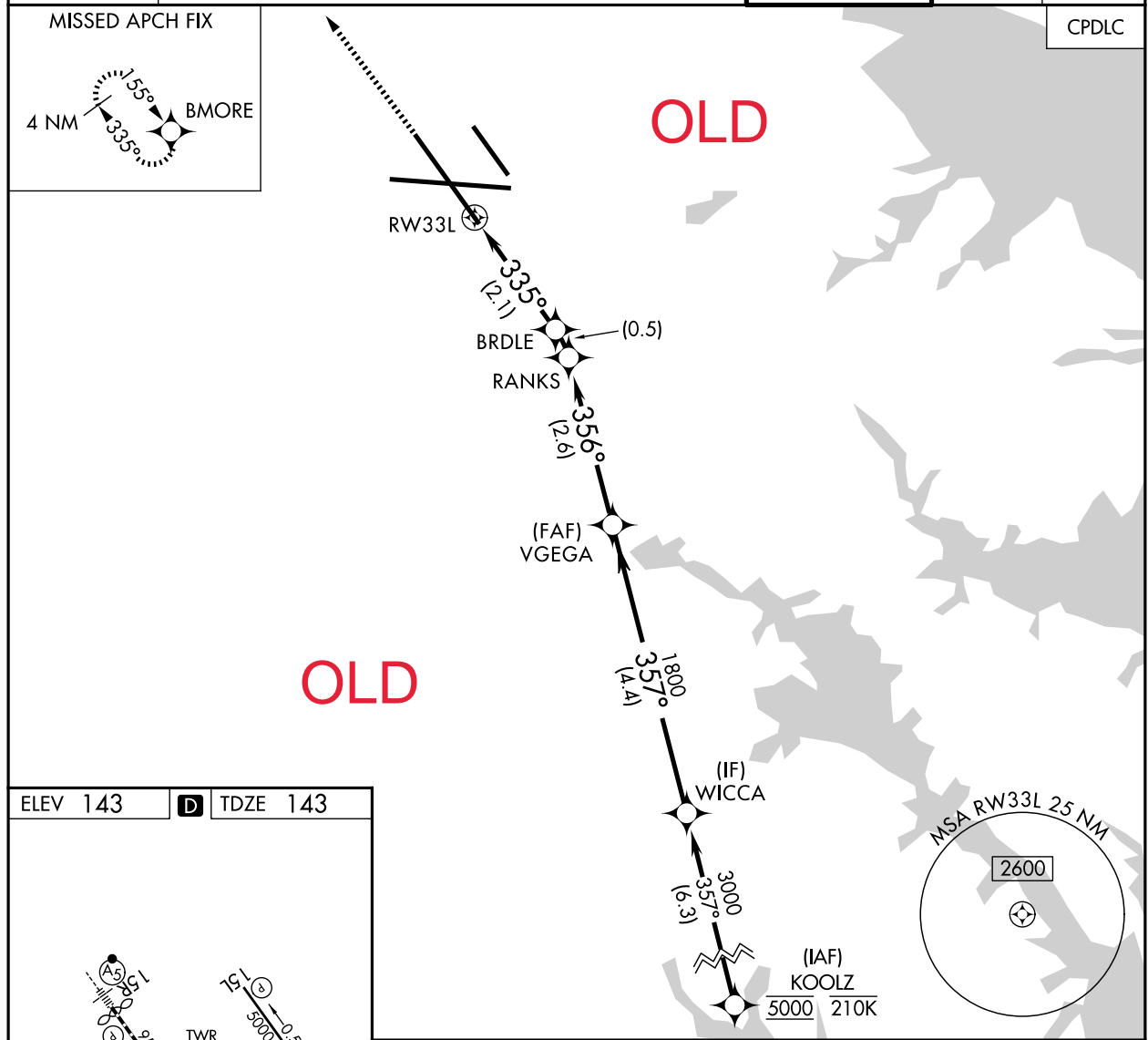
QUALITY
41
CHECKED

APP CRS	Rwy Ldg	8301
335°	TDZE	143
	Apt Elev	143

RNAV (RNP) X RWY 33L

BALTIMORE/WASHINGTON INTL THURGOOD MARSHALL (BWI)

RNP AR APCH - GPS, RF.		MALSR		MISSED APPROACH: Climb to 3000 direct BMORE and hold.	
▼ For uncompensated Baro-VNAV systems, procedure NA below -11°C or above 54°C.		AS			
D-ATIS	POTOMAC APP CON	BALTIMORE TOWER	GND CON	CLNC DEL	
115.1 127.8	119.0 282.275 (020°-100°) 119.7 290.475 (131°-180°) 124.55 317.425 (101°-130°) 128.7 307.9 (181°-019°)	119.4 257.8	121.9	118.05	



3000	BMORE	VGSI and RNAV glidepath not coincident (VGSI Angle 3.00/TCH 72).		WICCA
		RANKS	VGEGA	
		BRDLE		
		839	1800	3000
				GP 3.00°
				TCH 55
		2.1 NM	0.5 NM	2.6 NM
				4.4 NM
CATEGORY	A	B	C	D
RNP 0.30 DA	479/26 336 (400-1/2)			

AUTHORIZATION REQUIRED

NE-3, 19 FEB 2026 to 19 MAR 2026

NE-3, 19 FEB 2026 to 19 MAR 2026