

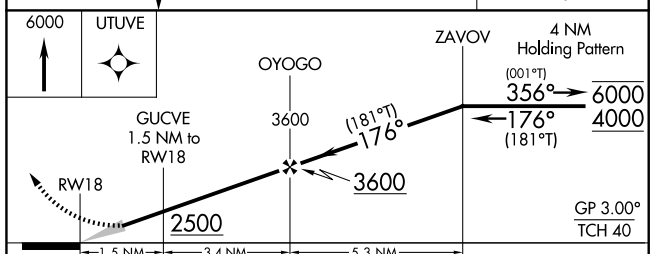
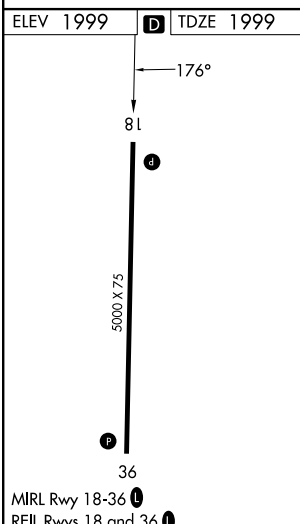
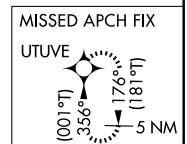
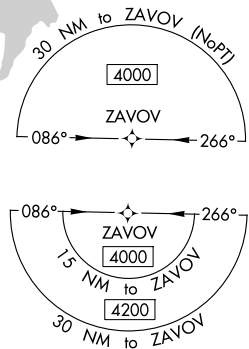
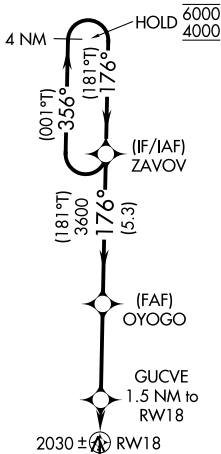
WAAS CH 82432 W18A	APP CRS 176°	Rwy Ldg TDZE Apt Elev	5000 1999 1999
--	------------------------	-----------------------------	---

RNAV (GPS) RWY 18

ROOKS COUNTY RGNL (RCP)

RNP APCH - GPS.		MISSED APPROACH: Climb to 6000 direct UTUVE and hold, continue climb-in-hold to 6000.
▼ Circling NA west of Rwy 18-36. For uncompensated Baro-VNAV systems; LNAV/VNAV NA below -18°C or above 54°C.	AWOS-3PT 120.075	DENVER CENTER 132.7 226.675
▲ NA		CTAF 122.9

PROTOTYPE-NOT FOR NAVIGATION



CATEGORY	A	B	C	D
LPV DA	2290-1	291 (300-1)		NA
LNAV/VNAV DA	2340-1	341 (400-1)		NA
LNAV MDA	2360-1	361 (400-1)		NA
CIRCLING	2460-1 461 (500-1)	2480-1 481 (500-1)	2500-1½ 501 (600-1½)	NA