

Flight Procedures Cover Page	Task Action: FLIGHT CHECK	Task Type: IAP	Estimated Chart Date: 05/14/2026	APWS Task ID: 8922E07F008A4629B45CE4642A02CCD5	APWS Project ID: 04F43BEC1A27474A890038D7724363BA
Procedure: RNAV (GPS) RWY 18 AMDT 0C		Enroute: NO	Specialist: Wilkinson, Christopher		Agreement Number:
Airport ID: KRCP			Airport City: STOCKTON		State: KS
Facility ID:	Facility Type:	Flight Inspection Remark Type: New FC Slot			

Procedure Comments:
 UTILIZED ACTIVE DATA FOR KRCP AND RWYS.

 UPDATED PRIMARY ALTIMETER.

 CRC REMAINDER CHANGED FROM FROM 08B0A6A6 TO 6E00A019.

 CONTACT CASIMIR TABAKA, AJV-A430, 405-202-7857.



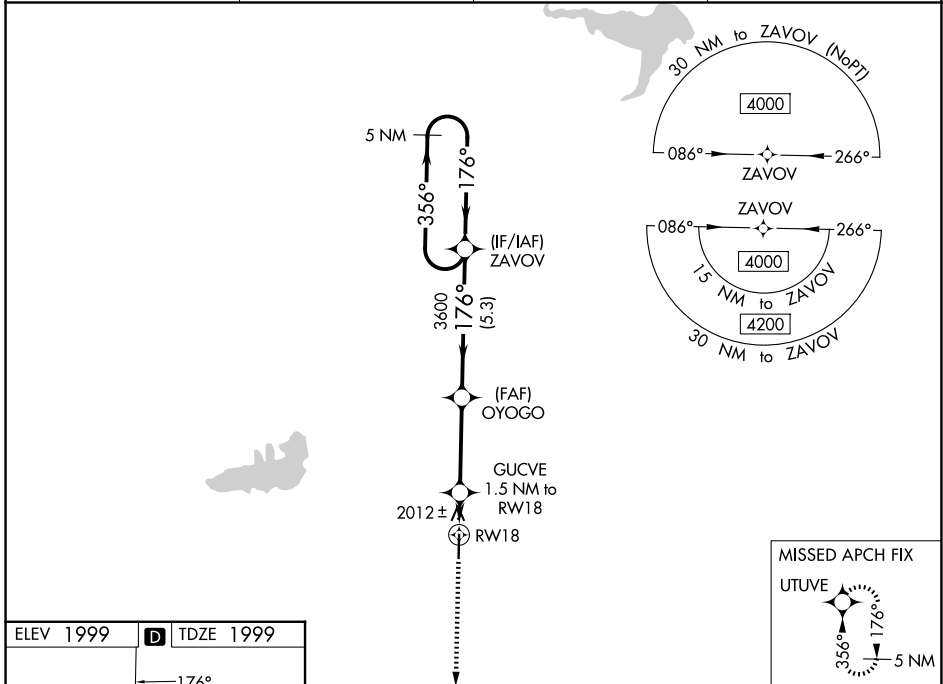
WAAS CH 82432 W18A	APP CRS 176°	Rwy Ldg TDZE Apt Elev	5000 1999 1999
--	------------------------	-----------------------------	---

OLD

RNAV (GPS) RWY 18
ROOKS COUNTY RGNL (RCP)

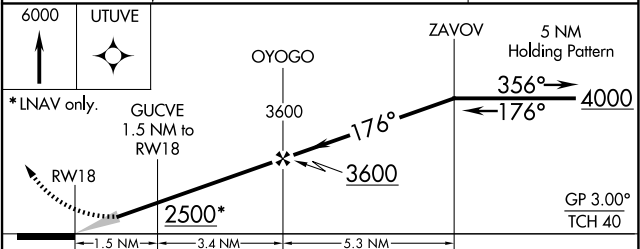
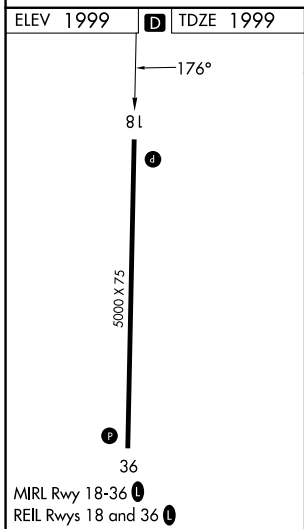
<p>▼ ▲ NA</p> <p>Baro-VNAV NA. Use Hill City altimeter setting; when not received, use Hays altimeter setting. Circling NA west of Rwy 18-36. DME/DME RNP-0.3 NA.</p>	<p>MISSED APPROACH: Climb to 6000 direct UTUVE and hold, continue climb-in-hold to 6000.</p>
---	--

AWOS-3PT 120.075	HLC ASOS 118.425	DENVER CENTER 132.7 226.675	CTAF 122.9 📍
----------------------------	----------------------------	---------------------------------------	-------------------------------



NC-2, 02 OCT 2025 to 30 OCT 2025

NC-2, 02 OCT 2025 to 30 OCT 2025



CATEGORY	A	B	C	D
LPV DA	2290-1 291 (300-1)			NA
LNAV/VNAV DA	2340-1 $\frac{1}{8}$ 341 (400-1 $\frac{1}{8}$)			NA
LNAV MDA	2360-1 361 (400-1)			NA
CIRCLING	2460-1 461 (500-1)	2480-1 481 (500-1)	2500-1 $\frac{1}{2}$ 501 (600-1 $\frac{1}{2}$)	NA