

Flight Procedures Cover Page	Task Action: Amendment	Task Type: DVA	Estimated Chart Date: 12/26/2024	APWS Task ID: 89661803CDC04C75AF17386D265506CD	APWS Project ID: 916261018D4145C78DD62132FC0CC0E2
Procedure: DIVERSE VECTOR AREA (RADAR VECTORS) Amdt 1		Enroute: NO	Specialist: Palmer, Leo		Agreement Number:
Airport ID: KOGD			Airport City: OGDEN		State: UT
Facility ID:	Facility Type:	Flight Inspection Remark Type:			
<div>Procedure Comments:</div> <div>MAGVAR UPDATE: change all RWY 34 references to RWY 35, and increase all headings by 3 degrees.</div> <div>CLEARs T-NOTAM: FDC 3/5365</div> <div>CONTACT MANAGER: DAVE DANNER (405)954-5077</div> <div>QUALITY 23 CHECKED</div>					



Federal Aviation Administration

Memorandum

Date: Date: 2013.04.24 13:47:53 -05'00'

To: Air Traffic Manager, Salt Lake City TRACON, SLC/S56
THRU: Manager, Operations Support Group, AJV-W2
THRU: Manager, Western Flight Procedures Team, AJV-W24

From: Deborah Copeland, Manager, Western Products Team, AJV-354

Subject: **ACTION:** Transmittal of Data

Digitally
signed by
Lonnie
Everhart

The attached Diverse Vector Area (DVA) for Ogden-Hinckley Airport (KOGD), Ogden, UT has been reviewed and complies with 8260.56.

Should you require updated Radar Video Maps or a DVA map, please contact the Air Traffic Products and Publications Group: 9-AWA-ATPUBS@faa.gov to submit your request.

A copy has been retained for our files.

Attachments

PLEASE RETAIN WITH PACKAGE

OGDEN-HINCKLEY (KOGD)

Original request came from ATC impromptu as an add-on to the SALT LAKE CITY DVA. Specific range of headings and distances were not provided. OVA was developed using full range of azimuth available to distance deemed reasonable for the location.

Results:

RWY 3, 214 CW 303 within 13 NM of the DRP, terrain 412300N/1120057W and RWY reciprocal heading, DO NOT EXCEED 180 KTS.

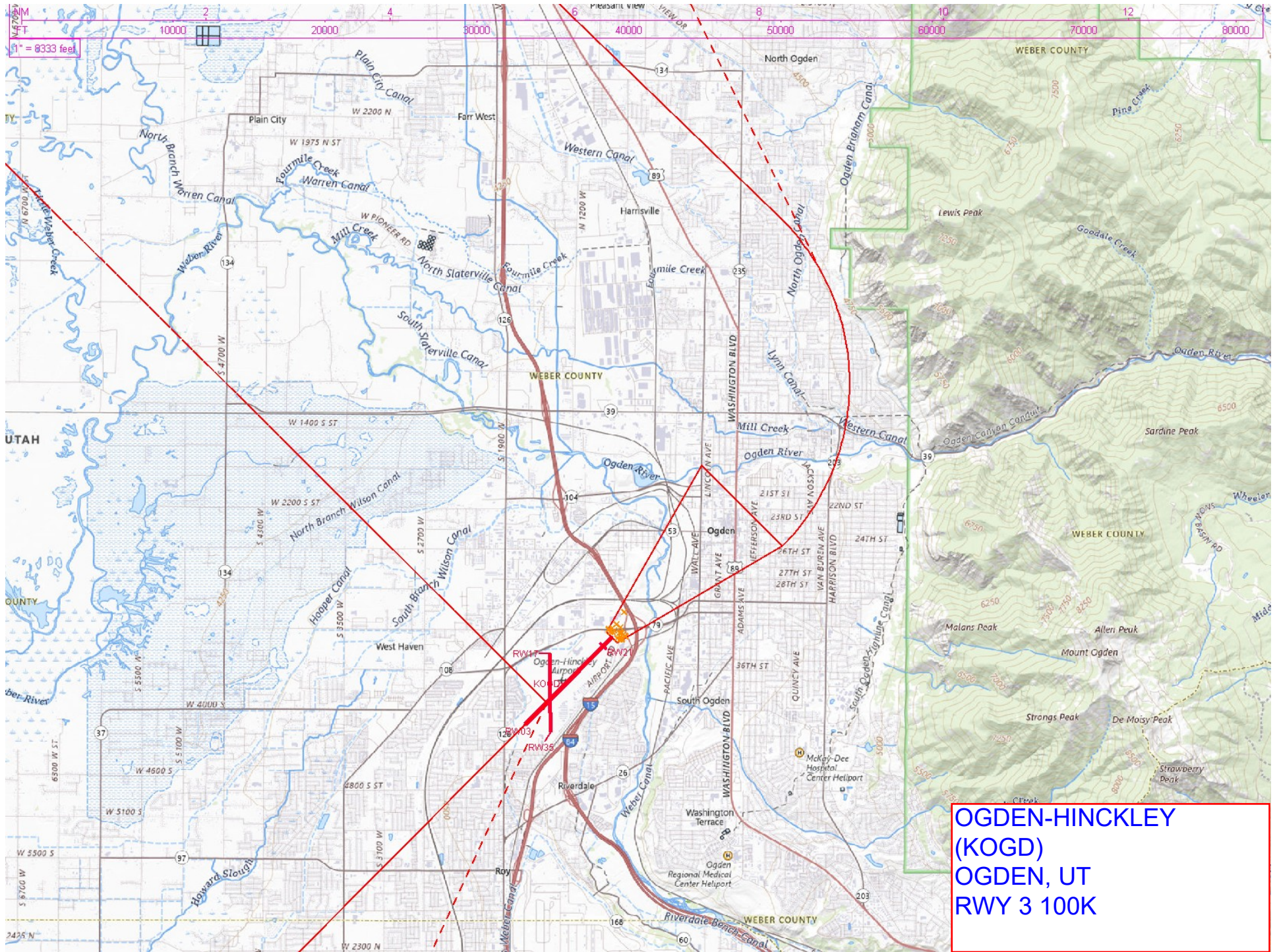
RWY 21, 162 CW 327 within 9 NM of the DRP, terrain 410124N/1115303W and 412315N/1120042W.

RWY 35, 169 CW 322 within 13 NM of the DRP, RWY reciprocal heading and terrain 412300N/1120057W.

RADAR FACILITY INFORMATION:

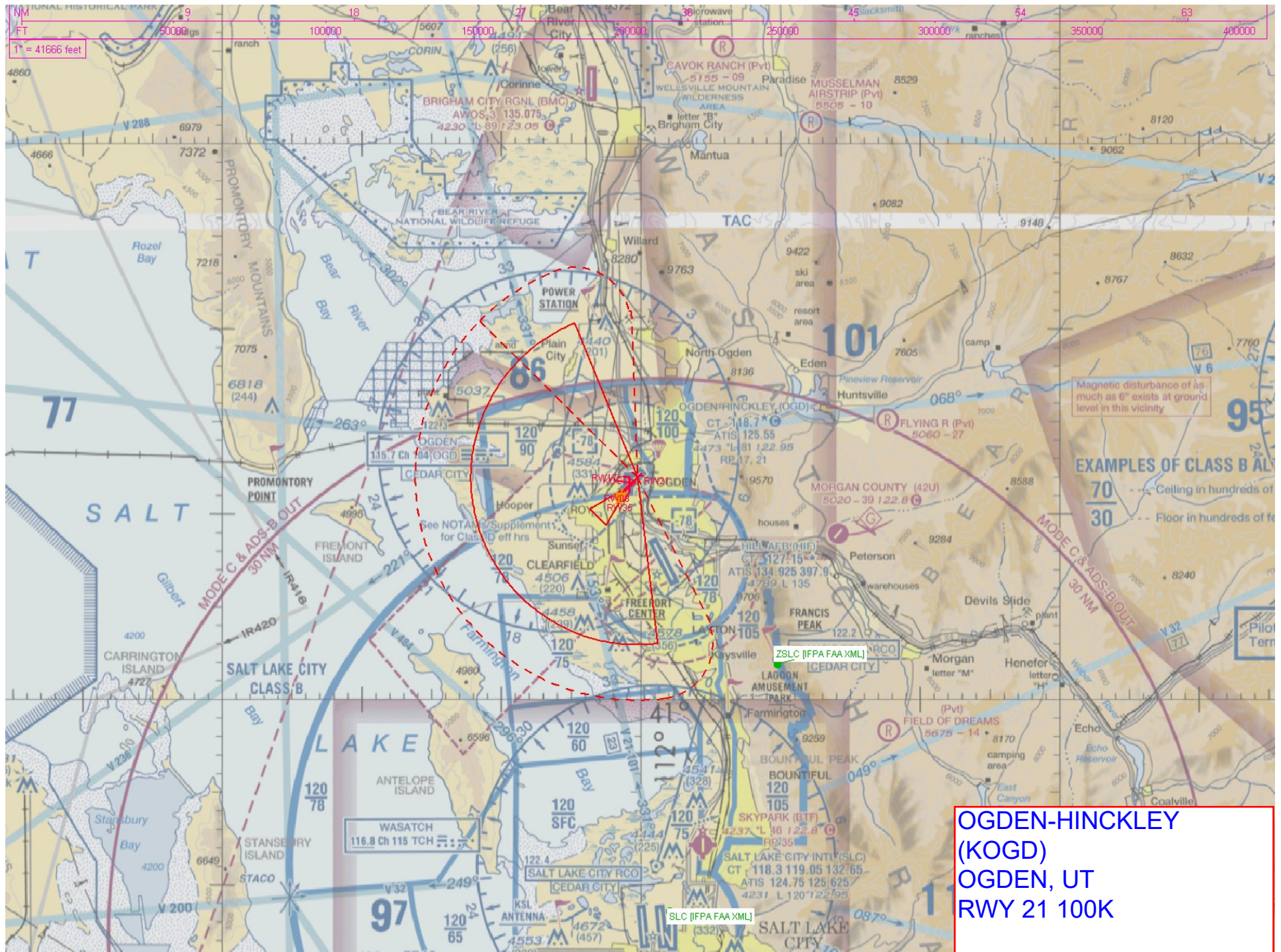
PROCEDURE PREDICATED ON ASR -9 (SLC;A) AT 404838.25N/1115759.94W OR ARSRIS (ZSLC;AR) AT 410158.55N/11 15018.49W. USING FUSION, NOT USED BY ARTCC.

MAGNETIC COURSES BASED ON AIRPORT MAG VAR 11E: EPOCH YR 2020.



OGDEN-HINCKLEY
(KOGD)
OGDEN, UT
RWY 3 100K





$$1'' = 8333 \text{ feet}$$
