

WAAS CH 65725 W23A	APP CRS 321°	Rwy Idg 3300 TDZE 20 APT Elev 20
--------------------------	------------------------	-------------------------------------------------------------

RNAV (GPS) RWY 32

HOOPER BAY (PAHP)

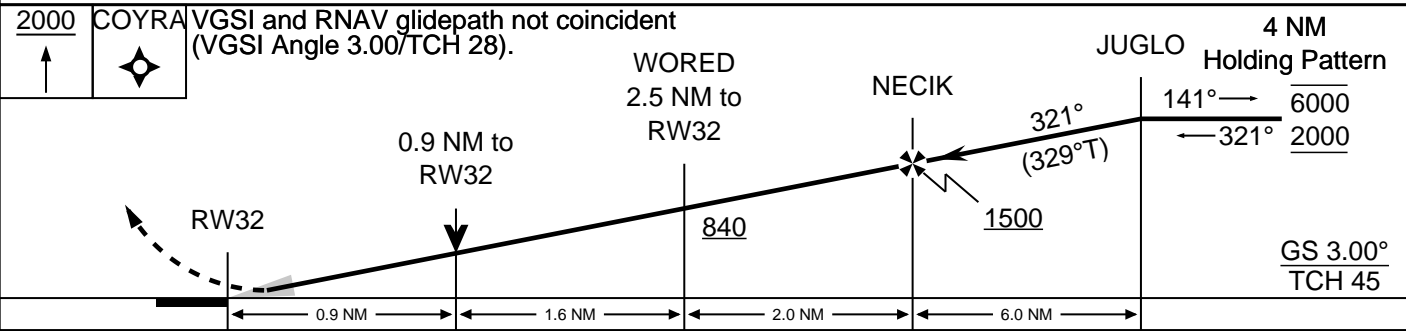
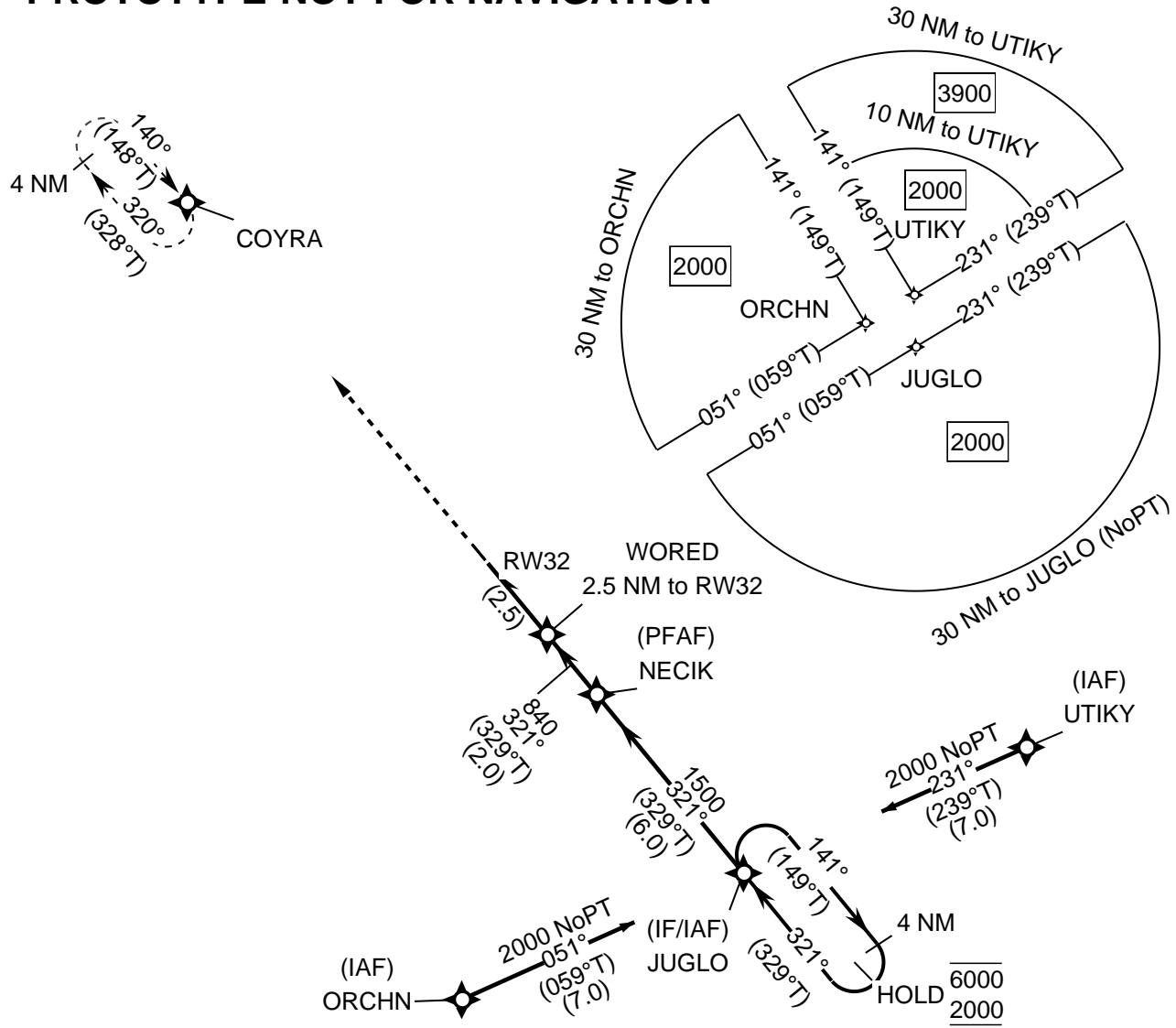
RNP APCH - GPS.

FOR UNCOMPENSATED BARO-VNAV SYSTEMS, LNAV/VNAV NA BELOW -19°C OR ABOVE 54°C.

MISSED APPROACH:
CLIMB TO 2000 DIRECT COYRA AND HOLD.

AWOS-3P 135.1	ANCHORAGE CENTER 124.5	KENAI RADIO 122.4	CTAF 123.0
-------------------------	----------------------------------	-----------------------------	----------------------

PROTOTYPE-NOT FOR NAVIGATION



CATEGORY	A	B	C	D
LPV	270-1 250			
LNAV/VNAV	270-1 250			
LNAV	320-1 300			
CIRCLING	400-1 380	480-1 460	480-1 1/2 460	580-2 560