

Flight Procedures Cover Page	Task Action: FLIGHT CHECK	Task Type: IAP	Estimated Chart Date: 07/09/2026	APWS Task ID: 89EF0742D5454877965D1ECCE50F4502	APWS Project ID: 3DBC8C836FA3453E9C729EA7465F149F
Procedure: RNAV (GPS) RWY 32 AMDT 2A		Enroute: NO	Specialist: Smith, Bryant		Agreement Number:
Airport ID: PAHP			Airport City: HOOPER BAY		State: AK
Facility ID:	Facility Type:	Flight Inspection Remark Type: New FC Slot			

Procedure Comments:
ACTIVE AIRNAV DATA USED.

CONTACT: ROB HAMILTON A433 MANAGER, 405-954-4608



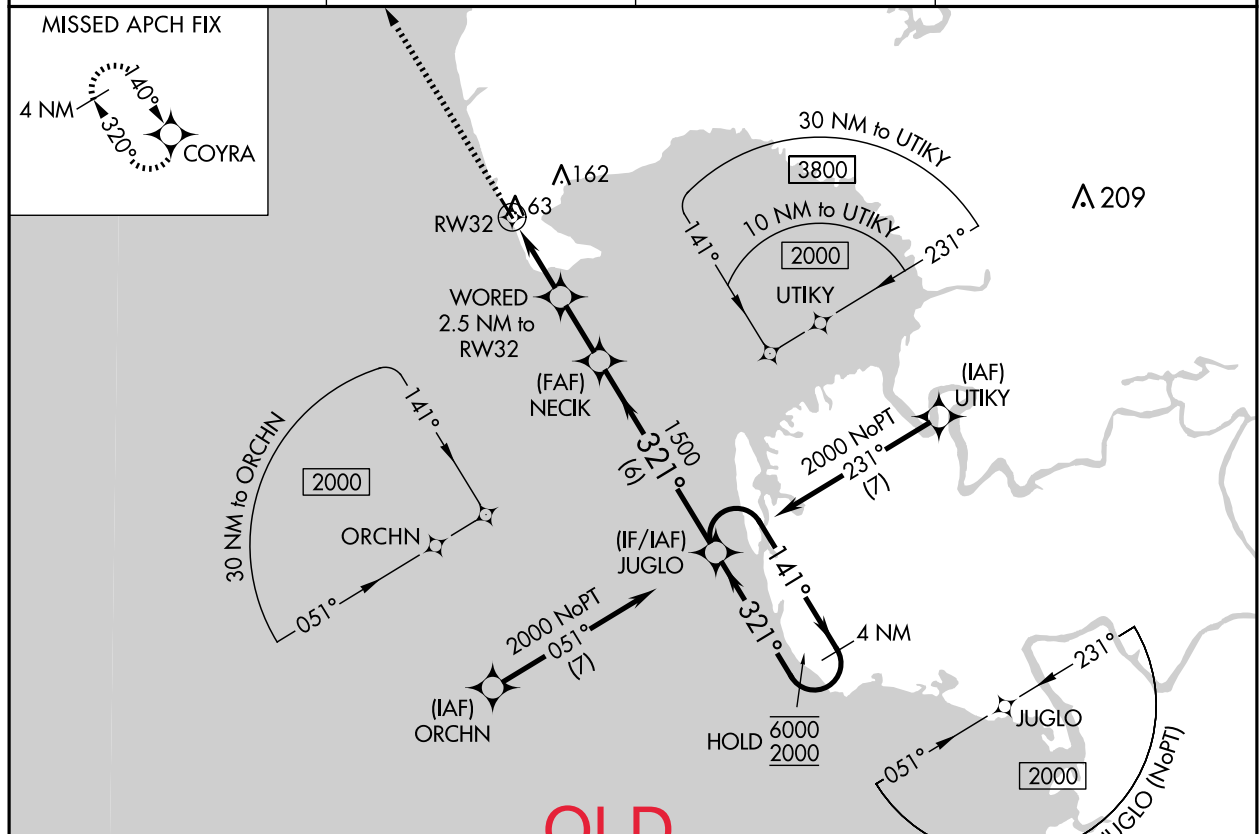
WAAS CH 65725 W32A	APP CRS 321°	Rwy Idg 3300 TDZE 20 Apt Elev 20
--	------------------------	---

OLD

RNAV (GPS) RWY 32
HOOPER BAY (HPB) (PAHP)

RNP APCH - GPS.	MISSED APPROACH: Climb to 2000 direct COYRA and hold.
<p>▼ Rwy 32 helicopter visibility reduction below 1 SM NA. For uncompensated Baro-VNAV systems, LNAV/VNAV NA below -19°C or above 54°C.</p> <p>▲ Straight-in Rwy 32 NA at night, Circling Rwy 32 NA at night.</p>	

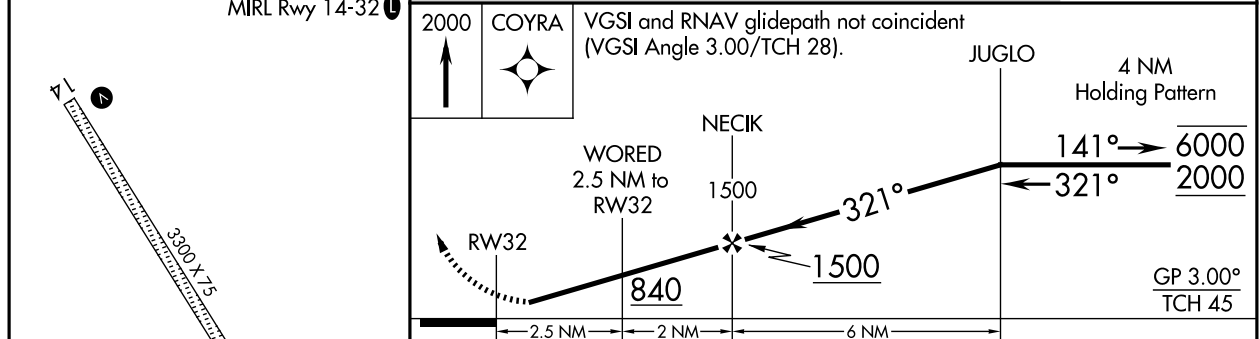
AWOS-3P 135.1	ANCHORAGE CENTER 124.5	KENAI RADIO 122.4	CTAF 123.0
-------------------------	----------------------------------	-----------------------------	----------------------



AK, 22 JAN 2026 to 19 MAR 2026

AK, 22 JAN 2026 to 19 MAR 2026

ELEV 20	TDZE 20
REIL Rwy 14 and 32	
MIRL Rwy 14-32	



CATEGORY	A	B	C	D
LPV DA		270-1	250 (300-1)	
LNAV/VNAV DA		270-1	250 (300-1)	
LNAV MDA		320-1	300 (300-1)	
C CIRCLING	400-1 380 (400-1)	480-1 460 (500-1)	480-1½ 460 (500-1½)	580-2 560 (600-2)