

Flight Procedures Cover Page	Task Action: FLIGHT CHECK	Task Type: IAP	Estimated Chart Date: 03/19/2026	APWS Task ID: 89FB11D9E444E2192CFBE408DF3B02C	APWS Project ID: ADB5B885B35444BD98C66E27013D2BA6
Procedure: RNAV (RNP) Z RWY 34L AMDT 1		Enroute: NO	Specialist: Dugan, Joshua		Agreement Number:
Airport ID: KDEN			Airport City: DENVER	State: CO	
Facility ID:	Facility Type:	Flight Inspection Remark Type: New FC Slot			
<p>Procedure Comments:</p> <p>ACTIVE DATA USED FOR KDEN</p> <p>RAISE MISSED ALTITUDE</p> <p>CONTACT ROBERT HAMILTON AJV-A433 405-954-4608</p> <p>10/08/25: THIS IS AN UPDATED COPY OF THE FORM DEVELOPED ON 07/15/25.</p> <p>1. PROFILE LINE 3 REMOVED TUGGL AS FAF.</p> <p>2. PROFILE LINE 7 ADDED 34:1 IS CLEAR AND 20:1 IS CLEAR.</p> <p>3. ADDED CHART SPEED ICON IN PLANVIEW AT KALHR: MAX 210 KIAS.</p> <p>8260-1</p> <p>1. REMOVED WAIVER.</p> <p>APPROVAL LETTER</p> <p>1. ADDED APPROVAL LETTER FOR MANDATORY ALTITUDE AT MERKL.</p>					



TO: AFS-460

SUBJECT: APPROVAL: DENVER, CO KDEN RNAV (RNP) Z RWY 34L

ISSUE: MANDATORY ALTITUDE RESTRICTION: INTERMEDIATE SEGMENT KALHR TO MERKL

Per the 8260.19K 8-6-11n, maximum, mandatory or block altitudes in the intermediate, final and/or missed approach segment require Flight Standards approval.

The intermediate segment for the RNAV (RNP) Z RWY 34L KALHR to MERKL has a mandatory altitude of 10000 MSL. ATC has requested mandatory altitude at MERKL to ensure aircraft separation during simultaneous operations.

This procedure has been flight checked and flown as satisfactory in both the current revision and previous amendments with the same mandatory altitude restriction with no issues noted by Flight Check, ATC operations or the flying public.

Requesting approval to publish the mandatory altitude restriction at the intermediate fix MERKL to match the ILS procedure.

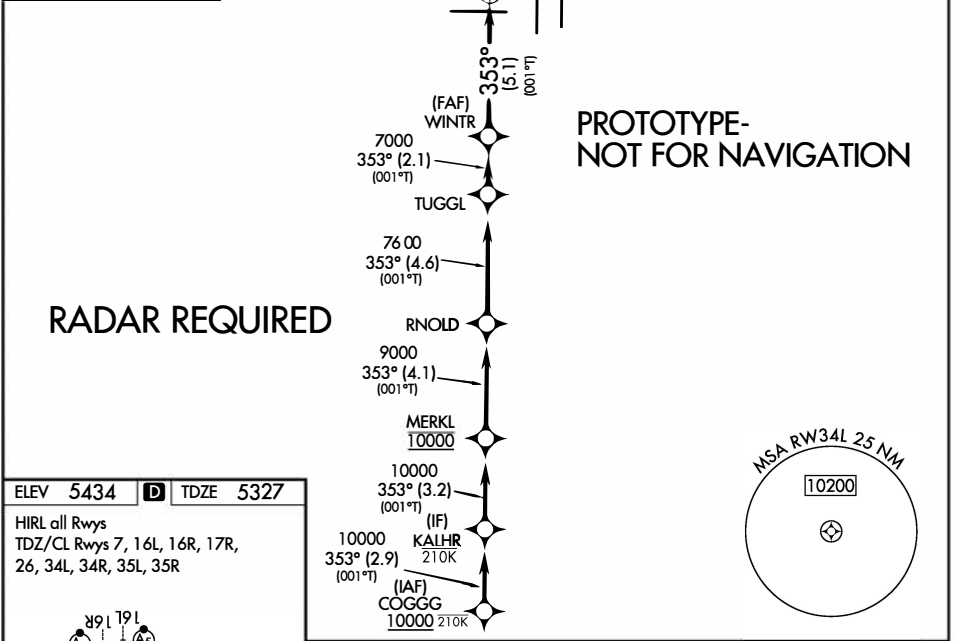
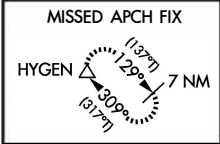
RNAV (RNP) Z RWY 34L

DENVER INTL (DEN)

APP CRS 353°	Rwy Ldg TDZE 5327	16000
	Apt Elev 5434	

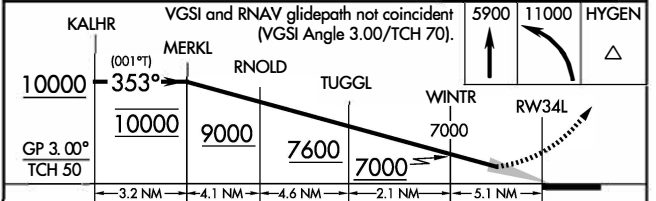
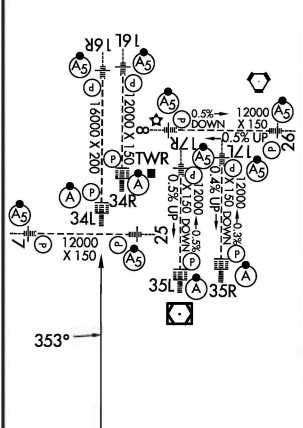
RNP AR APCH - GPS.	ALSF-2	MISSED APPROACH: Climb to 5900 then climbing left turn to 11000 direct HYGEM and hold.
<p>Simultaneous approach authorized. For uncompensated Baro-VNAV systems, procedure NA below -26°C or above 54°C. For inop ALS, increase RNP/AR 0.10 all Cats visibility to RVR 4000.</p>		

D-ATIS 125.6 379.9 (ARR) 134.025 (DEP)	DENVER APP CON 119.3 307.3 (N) 120.35 379.3 (S)	DENVER TOWER 135.3 351.95	GND CON 121.35 379.175 (W) 121.85 377.1 (E)
--	---	-------------------------------------	---



ELEV 5434	D	TDZE 5327
------------------	----------	------------------

HIRL all Rwys
TDZ/CL Rwys 7, 16L, 16R, 17R,
26, 34L, 34R, 35L, 35R



CATEGORY	A	B	C	D
RNP 0.10 DA		5587/24	260 (200-½)	
RNP 0.20 DA		5720/35	393 (300-⅝)	
RNP 0.30 DA		5782/45	455 (400-⅞)	

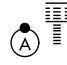
AUTHORIZATION REQUIRED

APP CRS	Rwy Idg	16000
353°	TDZE	5327
	Apt Elev	5434

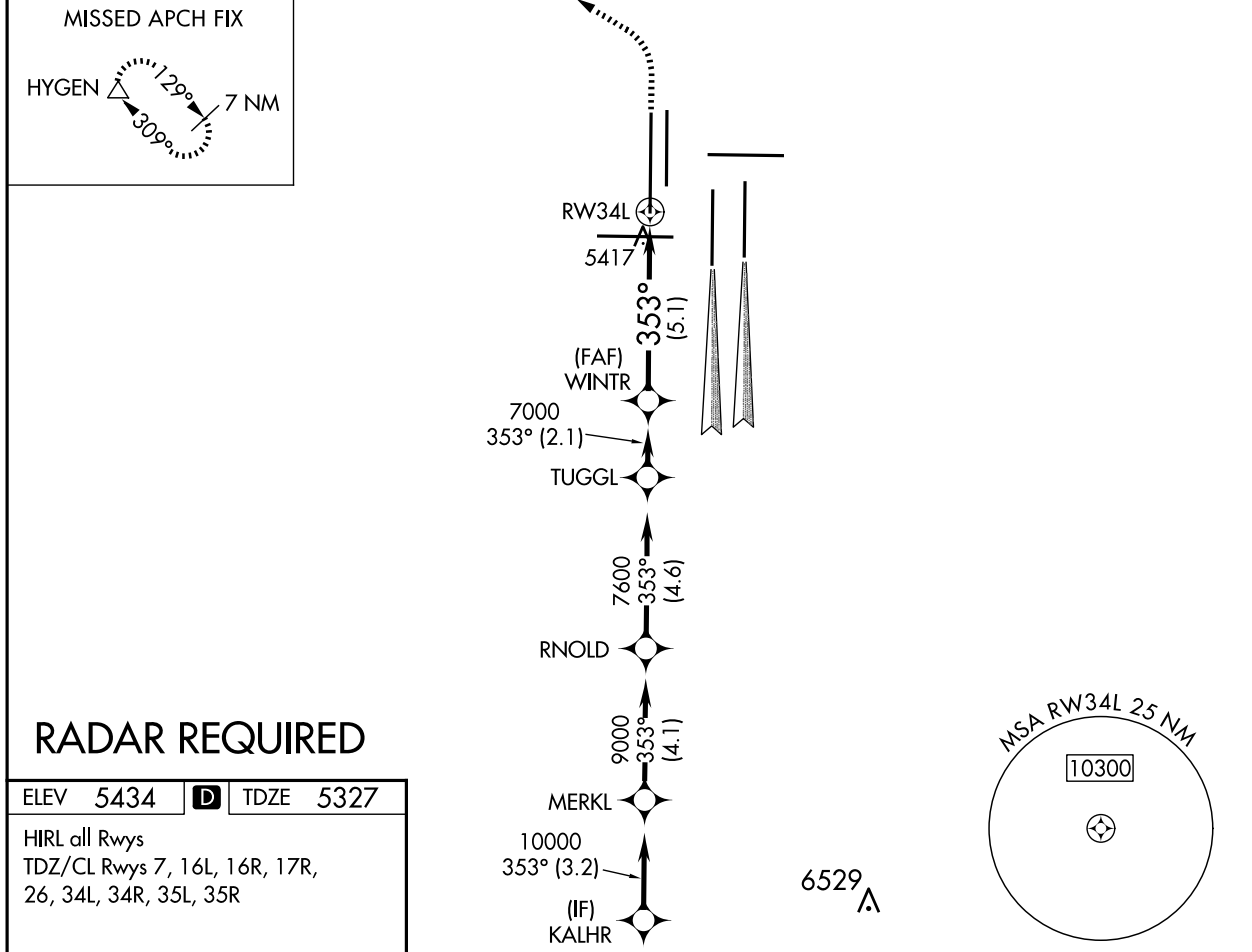
RNAV (RNP) Z RWY 34L

DENVER INTL (DEN)

▼ For uncompensated Baro-VNAV systems, procedure NA below -25°C (-13°F) or above 48°C (118°F). GPS required. For inoperative ALSF, increase RNP 0.10 all Cats visibility to RVR 4500 and RNP 0.20 all Cats visibility to RVR 6000 and RNP 0.30 all Cats visibility to 1½ mile. Simultaneous approach authorized. Use of FD or AP providing RNAV track guidance required during simultaneous operations.

ALSF-2

 MISSED APPROACH: Climb to 5900 then climbing left turn to 10000 direct HYGEN and hold.

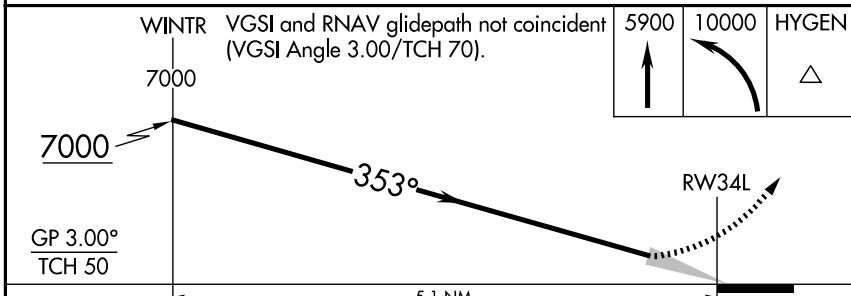
D-ATIS 125.6 379.9 (ARR) 134.025 (DEP)	DENVER APP CON 119.3 307.3 (N) 120.35 379.3 (S)	DENVER TOWER 135.3 351.95	GND CON 121.35 379.175 (W) 121.85 377.1 (E)	CLNC DEL 118.75	CPDLC
--	---	-------------------------------------	---	---------------------------	-------



RADAR REQUIRED

ELEV	5434	D	TDZE	5327
------	------	----------	------	------

HIRL all Rwy's
 TDZ/CL Rwy's 7, 16L, 16R, 17R, 26, 34L, 34R, 35L, 35R



CATEGORY	A	B	C	D
RNP 0.10 DA		5587/24	260 (200-½)	
RNP 0.20 DA		5720/45	393 (300-¾)	
RNP 0.30 DA		5782/60	455 (400-1¼)	

AUTHORIZATION REQUIRED

SW-1, 12 JUN 2025 to 10 JUL 2025

SW-1, 12 JUN 2025 to 10 JUL 2025