

Flight Procedures Cover Page	Task Action: Abbreviated Amendment	Task Type: STAR	Estimated Chart Date: 11/27/2025	APWS Task ID: 8A46A411E077481AA176613627D34822	APWS Project ID: DA362AB0A3EB4AB3A27C5410CF3C9FB5
Procedure: STAR GNDLF THREE (RNAV) ATLANTA GA KATL		Enroute: YES	Specialist: Copeland, Guy		Agreement Number:
Airport ID: KATL			Airport City: ATLANTA		State: GA
Facility ID:	Facility Type:	Flight Inspection Remark Type:			

**Procedure Comments:**

PROCESSED IAW TECHNICAL SUPPORT GROUP (AJF-17) MEMO DATED 07/07/2021, SUBJECT: GUIDANCE FOR PROCEDURAL CHANGES REQUIRING FLIGHT INSPECTION VALIDATION.

CONTACT: ROBERT HAMILTON, AJV-A433, 405-954-4608



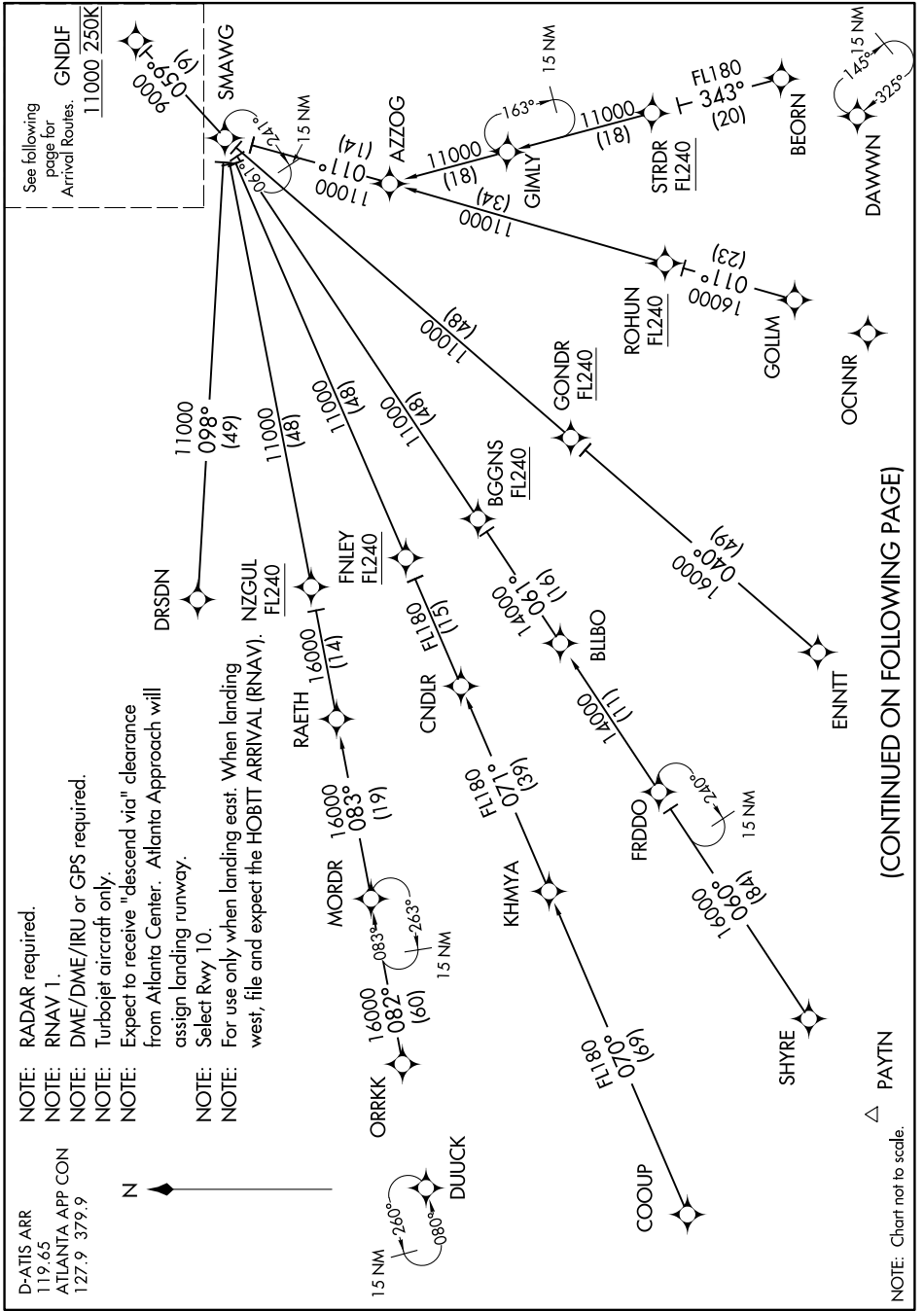
07/08/2025





# GNDLF TWO ARRIVAL (RNAV) Transition Routes

SE-4, 01 FEB 2018 to 01 MAR 2018



# GNDLF TWO ARRIVAL (RNAV) Transition Routes

SE-4, 01 FEB 2018 to 01 MAR 2018

SE-4, 01 FEB 2018 to 01 MAR 2018

ARRIVAL ROUTE DESCRIPTION

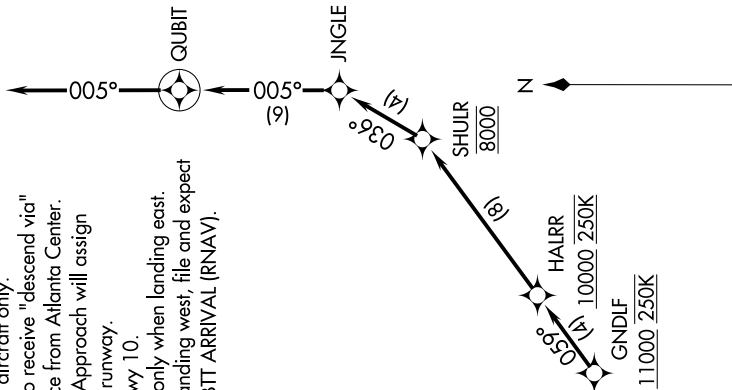
- BEORN TRANSITION (BEORN.GNDLF2):
- COOUP TRANSITION (COOUP.GNDLF2): Assigned by ATC only.
- DRSDN TRANSITION (DRSDN.GNDLF2):
- ENNTT TRANSITION (ENNTT.GNDLF2):
- FRDDO TRANSITION (FRDDO.GNDLF2):
- GOLLM TRANSITION (GOLLM.GNDLF2):
- KHYMA TRANSITION (KHYMA.GNDLF2): Assigned by ATC only.
- ORRKK TRANSITION (ORRKK.GNDLF2):
- SHYRE TRANSITION (SHYRE.GNDLF2):
- STRDR TRANSITION (STRDR.GNDLF2):

From GNDLF on track 059° to cross HALRR at or above 10000 and at 250K, then on track 059° to cross SHULR at 8000, then on track 036° to JNGLE, then on track 005° to QUBIT, then on track 005°. Expect RADAR vectors to find approach course.

LOST COMMUNICATIONS:

- ASSIGNED RWY 10 or NOT ASSIGNED: Cross HALRR at or above 10000; cross SHULR at 8000; cross QUBIT at 5000; after QUBIT descend to 3000 and proceed direct DEWHY; proceed on the ILS or RNAV Rwy 10 approach.
- ASSIGNED RWY 9L: Cross HALRR at or above 10000; cross SHULR at 8000; cross QUBIT at 6000; after QUBIT proceed direct RYENN and proceed on the ILS or RNAV Rwy 9L approach.
- ASSIGNED RWY 9R: Cross HALRR at or above 10000; cross SHULR at 8000; cross QUBIT at 6000; after QUBIT proceed direct ANDYI and proceed on the ILS or RNAV Rwy 9R approach.
- ASSIGNED RWY 8L: Cross HALRR at or above 10000; cross SHULR at 8000; cross QUBIT at 6000; after QUBIT proceed direct LARLI and proceed on the ILS or RNAV Rwy 8L approach.
- ASSIGNED RWY 8R: Cross HALRR at or above 10000; cross SHULR at 8000; cross QUBIT at 6000; after QUBIT proceed direct GPEAT and proceed on the ILS or RNAV Rwy 8R approach.

D-ATIS ARR  
119.65  
ATLANTA APP CON  
127.9 379.9



- NOTE: RADAR required.
- NOTE: RNAV 1.
- NOTE: DME/DME/IRU or GPS required.
- NOTE: Turbojet aircraft only.
- NOTE: Expect to receive "descend via" clearance from Atlanta Center.
- NOTE: Atlanta Approach will assign landing runway.
- NOTE: Select Rwy 10.
- NOTE: For use only when landing east.
- NOTE: When landing west, file and expect the HOBTT ARRIVAL (RNAV).

SE-4, 01 FEB 2018 to 01 MAR 2018