

Flight Procedures Cover Page	Task Action: P-NOTAM	Task Type: IAP	Estimated Chart Date: 09/03/2026	APWS Task ID: 8AC5BBBEBAF446A58B99707BF01BD204	APWS Project ID: E9014399DDB542A1BCFA38DB39BAF690
Procedure: RNAV (GPS) RWY 17 AMDT 1B		Enroute: NO	Specialist: Johnson, Timothy		Agreement Number:
Airport ID: KSNL			Airport City: SHAWNEE		State: OK
Facility ID:	Facility Type:	Flight Inspection Remark Type:			

Procedure Comments:

Visibility Initiative (Garmin) - Update IAP visibility minimums IAW Order 8260.3, Chapter 3, Section 3-3. Visibility Minimums.

PROCESSED IAW TECHNICAL SUPPORT GROUP (AJF-17) MEMO DATED 07/07/2021, SUBJECT: GUIDANCE FOR PROCEDURAL CHANGES REQUIRING FLIGHT INSPECTION/VALIDATION.

CONTACT: CASEY HILL (405) 954-0624.



WAAS CH 86919 W17A	APP CRS 174°	Rwy Ldg TDZE Apt Elev	5997 1073 1073
--	------------------------	-----------------------------	---

RNAV (GPS) RWY 17

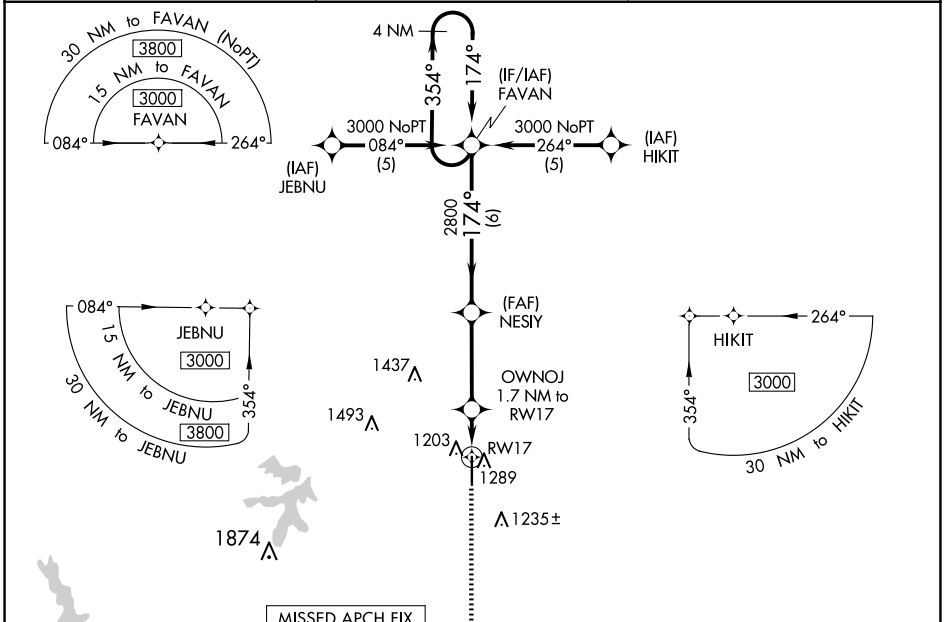
SHAWNEE RGNL (SNL)

⚠ Baro-VNAV NA when using Seminole altimeter setting. For uncompensated Baro-VNAV systems, LNAV/VNAV NA below -17°C (2°F) or above 54°C (130°F).
⚠ DME/DME RNP-0.3 NA. When local altimeter setting not received, use Seminole altimeter setting: increase LPV DA to 1313 feet; increase LNAV/VNAV DA to 1487 feet and visibility ¼ SM; increase all MDAs 40 feet and visibility Cat C ¼ SM.

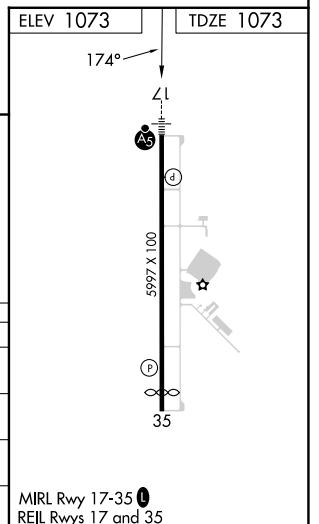
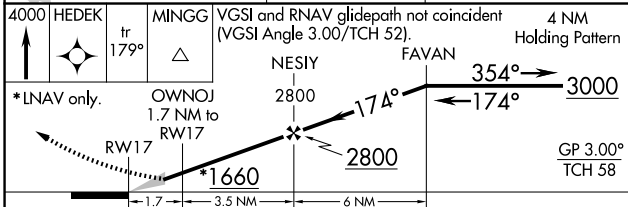


MISSED APPROACH: Climb to 4000 direct HEDEK and on track 179° to MINGG and hold.

AWOS-3PT 118.275	OKE CITY APP CON 120.45 288.325	UNICOM 122.7 (CTAF)
----------------------------	---	-------------------------------



4000 HEDEK	↑	tr 179°	MINGG	△	VGSI and RNAV glidepath not coincident (VGSI Angle 3.00/TCH 52).	4 NM Holding Pattern
------------	---	---------	-------	---	--	----------------------



CATEGORY	A	B	C	D
LPV DA	1273-½	200 (200-½)		NA
LNAV/VNAV DA	1447-¾	374 (400-¾)		NA
LNAV MDA	1540-½	467 (500-½)	1540-¾ 467 (500-¾)	NA
C CIRCLING	1600-1	527 (600-1)	1640-1½ 567 (600-1½)	NA

SC-1, 16 APR 2026 to 14 MAY 2026

SC-1, 16 APR 2026 to 14 MAY 2026