

Flight Procedures Cover Page	Task Action: FLIGHT CHECK	Task Type: IAP	Estimated Chart Date: 10/31/2024	APWS Task ID: 8BA267039A3A44F69C12499172B68D06	APWS Project ID: 32E31EFCA8624C4788B00D97BFC5F516
Procedure: ILS OR LOC RWY 4L AMDT 27		Enroute: YES	Specialist: Dean, Kelly		Agreement Number:
Airport ID: KLIT			Airport City: LITTLE ROCK		State: AR
Facility ID: LIT	Facility Type: VORTAC	Flight Inspection Remark Type: New FC Slot			

Procedure Comments:
POC FOR THIS ACTION IS CAS TABAKA 405-954-7931



LOC/DME I-LIT 110.3 Chan 40	APP CRS 047°	Rwy Idg 7976 TDZE 258 Apt Elev 266
--	------------------------	--

ILS or LOC RWY 4L

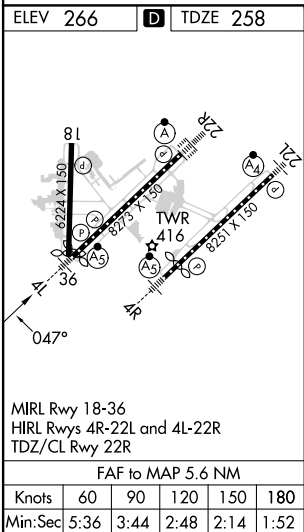
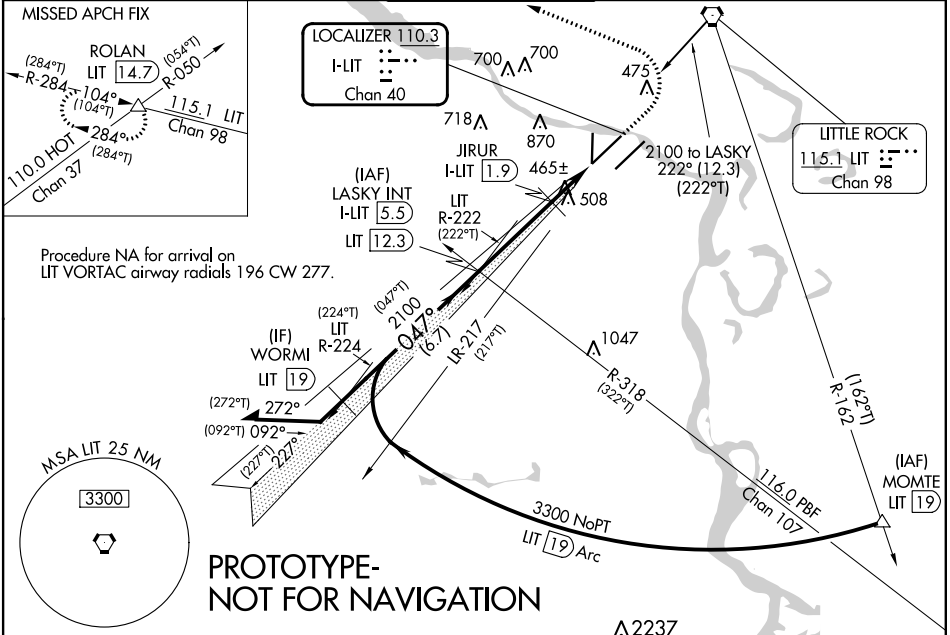
BILL AND HILLARY CLINTON NTL/ADAMS FLD (LIT)

Simultaneous approach authorized. Rwy 4L helicopter visibility reduction below RVR 4000 NA. Inop table does not apply to S-ILS 4L all Cats. For inop ALS, increase S-LOC 4L Cats A/B visibility to RVR 5500 and Cats C/D visibility to 2 SM; increase JIRUR fix minimums S-LOC 4L Cats A/B visibility to RVR 5500 and Cats C/D visibility to 1½ SM.



MISSED APPROACH: Climb to 1500 then climbing left turn to 3500 on LIT VORTAC R-284 to ROLAN INT/LIT 14.7 DME and hold.

D-ATIS 125.65	LITTLE ROCK APP CON 135.4 353.6	ADAMS TOWER 118.7 257.8	GND CON 121.9 339.8	CLNC DEL 118.95
-------------------------	---	-----------------------------------	-------------------------------	---------------------------



Remain within 10 NM

LASKY INT I-LIT 5.5, LIT 12.3

JIRUR I-LIT 1.9, I-LIT 1.1, I-LIT 0.2

Use I-LIT DME when on the localizer course.

CATEGORY	A	B	C	D
S-ILS 4L	508/40 250 (300-¾)			
S-LOC 4L	960/40	702 (700-¾)	960-1½	702 (700-1½)
CIRCLING	960-1 694 (700-1)	1000-1 734 (800-1)	1180-2¾ 914 (1000-2¾)	1180-3 914 (1000-3)
	JIRUR FIX MINIMUMS (DME REQUIRED)			
S-LOC 4L	720/40	462 (500-¾)	720/50	462 (500-1)
CIRCLING	820-1 554 (600-1)	1000-1 734 (800-1)	1180-2¾ 914 (1000-2¾)	1180-3 914 (1000-3)

Distances: 3.6 NM, 0.7 NM, 1.3 NM

LOC/DME I-LIT 110.3 Chan 40	APP CRS 047°	Rwy Idg 7976 TDZE 258 Apt Elev 266
---	------------------------	---

ILS or LOC RWY 4L

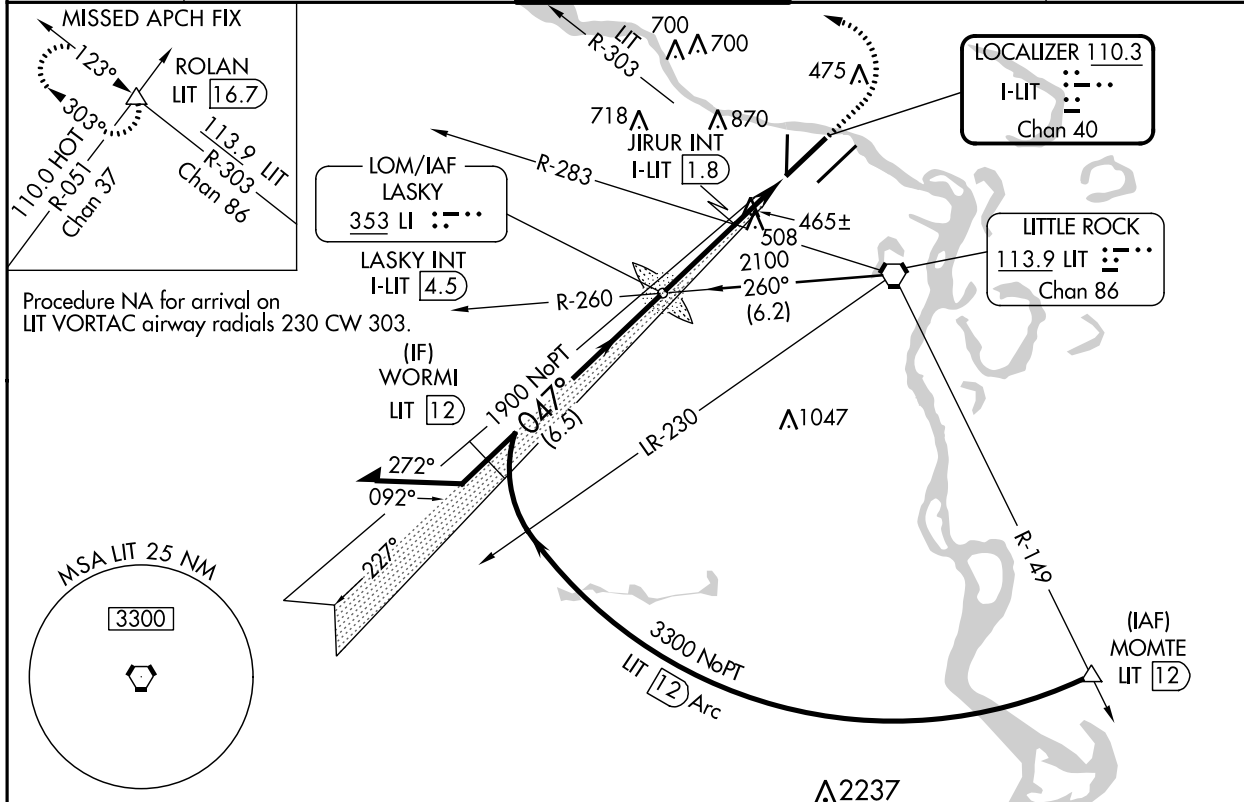
BILL AND HILLARY CLINTON NTL/ADAMS FLD (LIT)

⚠ Simultaneous approach authorized. Rwy 4L helicopter visibility reduction below RVR 4000 NA. Inop table does not apply to S-ILS 4L all Cats. LOC minimums: For inop ALS, increase S-LOC 4L Cats A/B visibility to 1 SM and Cats C/D visibility to 2 SM. JIRUR fix minimums: For inop ALS, increase S-LOC 4L Cats A/B visibility to 1 SM and Cats C/D visibility to 1 3/8 SM.

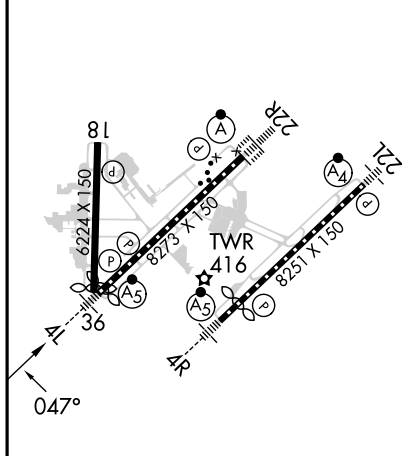
MALS
A5

MISSED APPROACH: Climb to 1500 then climbing left turn to 3500 on heading 260° and on LIT VORTAC R-303 to ROLAN INT/LIT 16.7 DME and hold.

D-ATIS 125.65	LITTLE ROCK APP CON 135.4 353.6	ADAMS TOWER 118.7 257.8	GND CON 121.9 339.8	CLNC DEL 118.95
-------------------------	---	-----------------------------------	-------------------------------	---------------------------



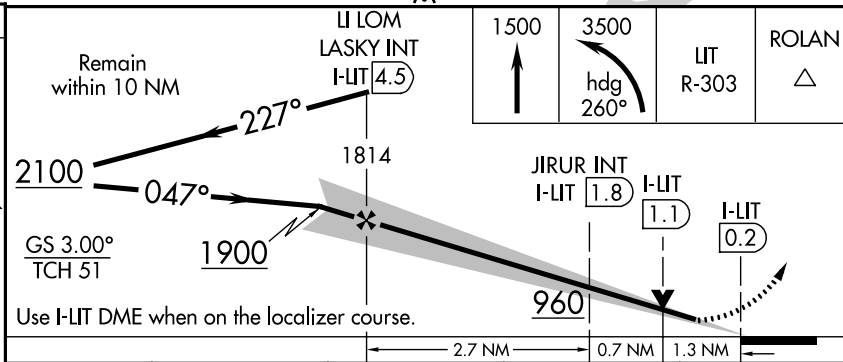
ELEV 266	D TDZE 258
----------	-------------------



MIRL Rwy 18-36
HIRL Rwy 4R-22L and 4L-22R
TDZ/CL Rwy 4L, 4R, 22L and 22R

FAF to MAP 4.7 NM

Knots	60	90	120	150	180
Min:Sec	4:42	3:08	2:21	1:53	1:34

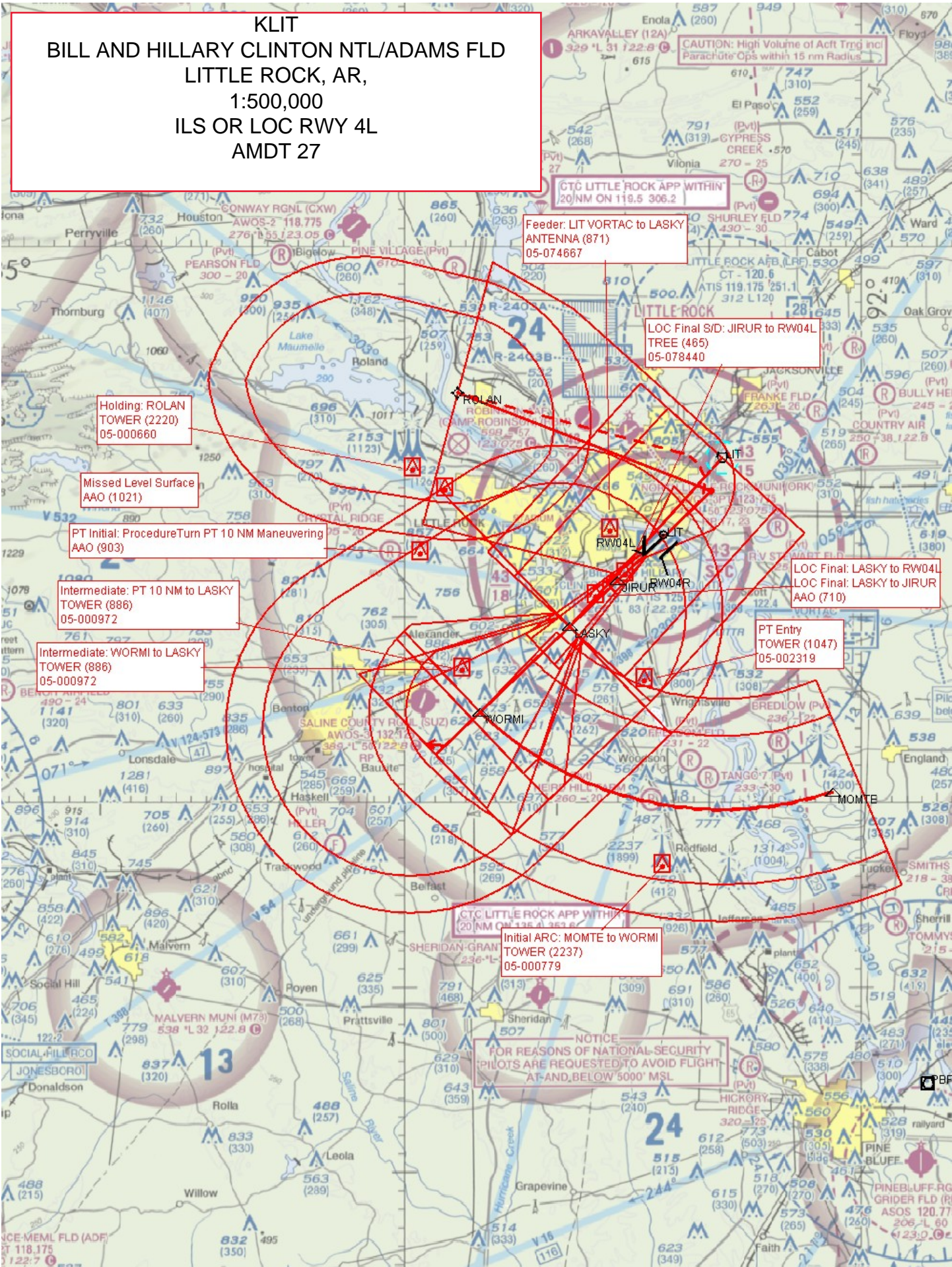


CATEGORY	A	B	C	D
S-ILS 4L	508/40 250 (300-3/4)			
S-LOC 4L	960/40	702 (700-3/4)	960-1 5/8	702 (700-1 5/8)
C CIRCLING	960-1 694 (700-1)	1000-1 734 (800-1)	1180-2 3/4 914 (1000-2 3/4)	1180-3 914 (1000-3)
JIRUR FIX MINIMUMS (DUAL VOR RECEIVERS OR DME REQUIRED)				
S-LOC 4L	720/40	462 (500-3/4)	720/50	462 (500-1)
C CIRCLING	820-1 554 (600-1)	1000-1 734 (800-1)	1180-2 3/4 914 (1000-2 3/4)	1180-3 914 (1000-3)

SC-1, 21 MAR 2024 to 18 APR 2024

SC-1, 21 MAR 2024 to 18 APR 2024

KLIT
 BILL AND HILLARY CLINTON NTL/ADAMS FLD
 LITTLE ROCK, AR,
 1:500,000
 ILS OR LOC RWY 4L
 AMDT 27



CAUTION: High Volume of Act Trng Incl Parachute Ops within 15 nm Radius

CTC LITTLE ROCK APP WITHIN 20 NM ON 119.5 306.2

Feeder: LIT VORTAC to LASKY ANTENNA (871) 05-074667

LOC Final S/D: JIRUR to RW04L TREE (465) 05-078440

Holding: ROLAN TOWER (2220) 05-000660

Missed Level Surface AAO (1021)

PT Initial: Procedure Turn PT 10 NM Maneuvering AAO (903)

Intermediate: PT 10 NM to LASKY TOWER (886) 05-000972

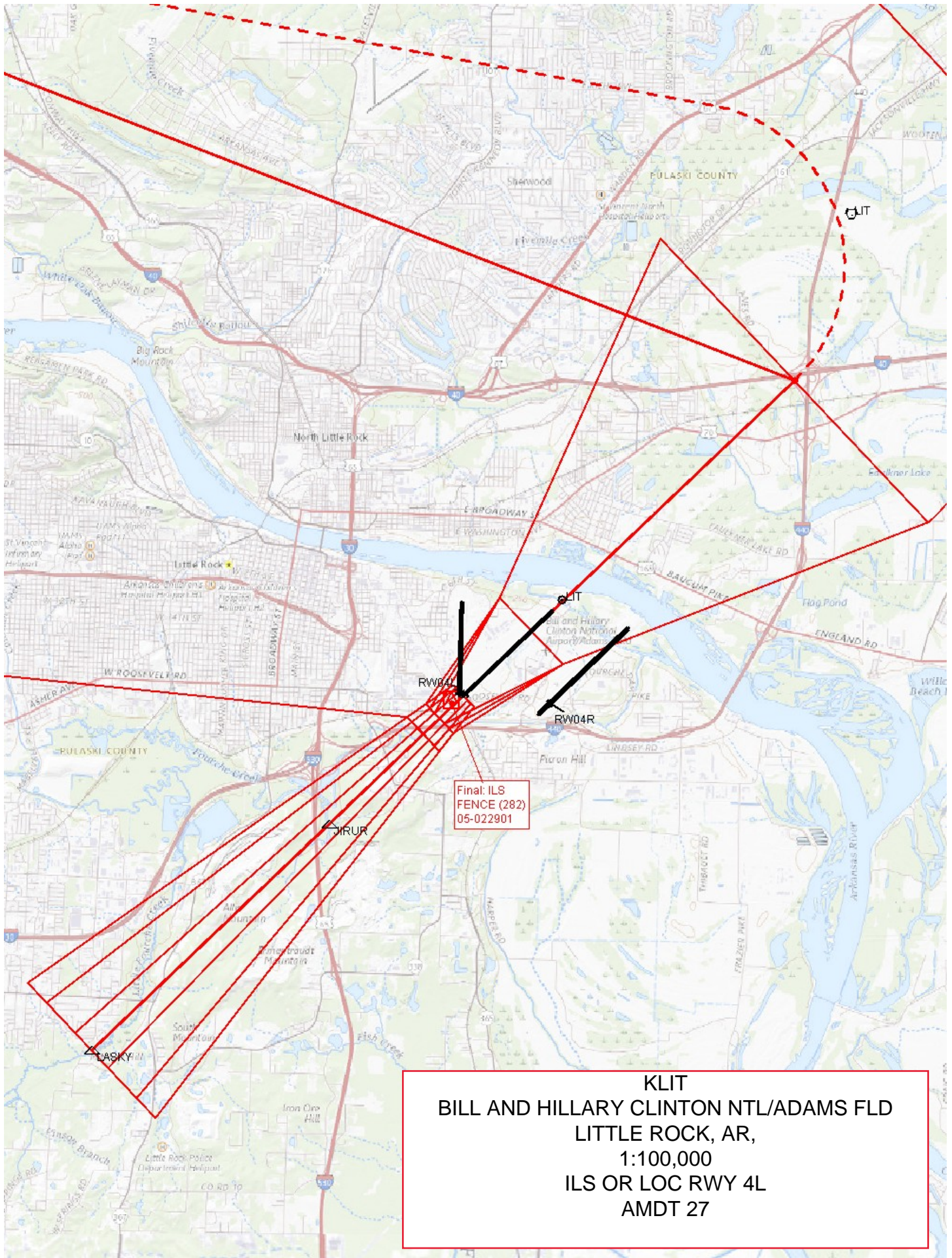
Intermediate: WORMI to LASKY TOWER (886) 05-000972

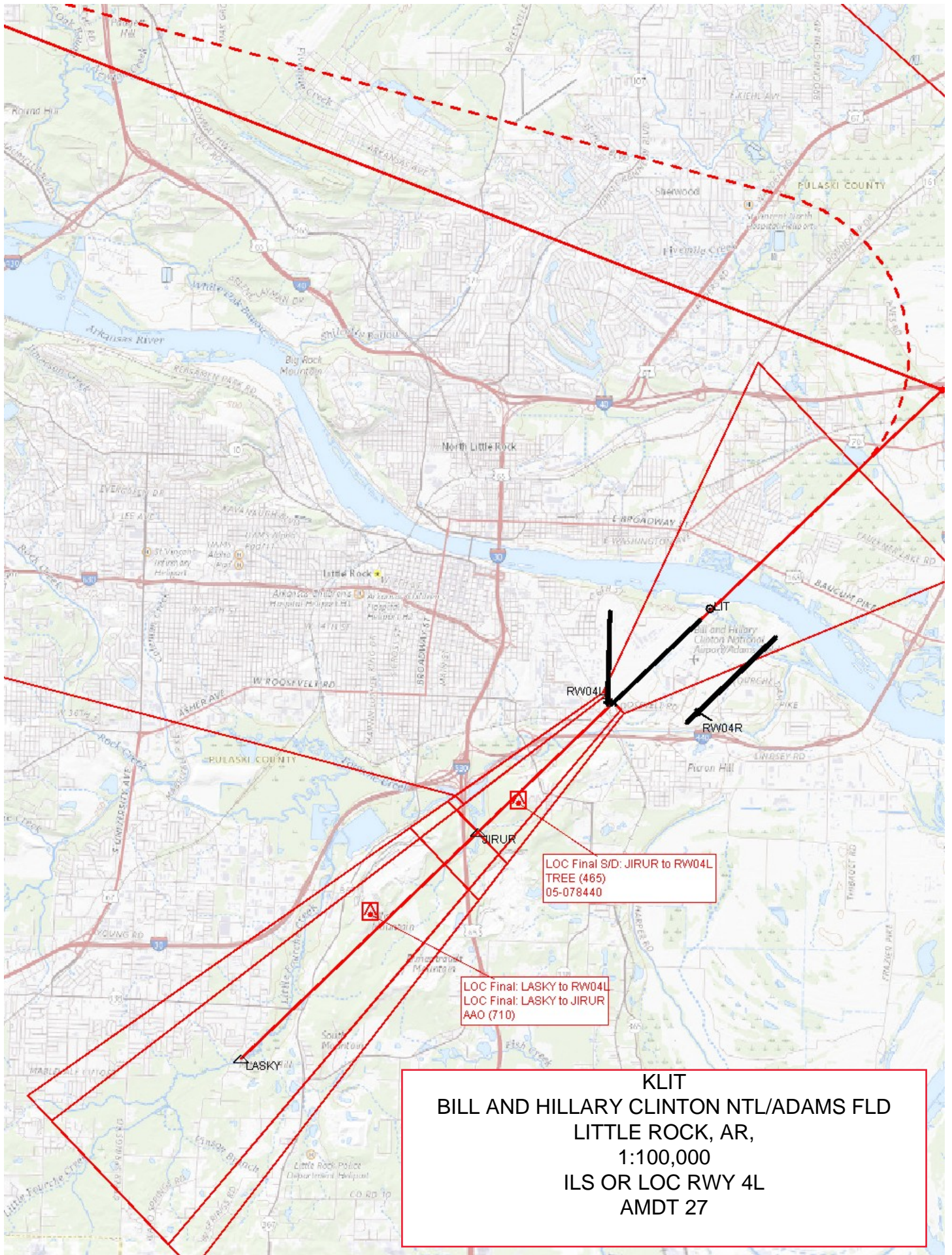
LOC Final: LASKY to RW04L LOC Final: LASKY to JIRUR AAO (710)

PT Entry TOWER (1047) 05-002319

Initial ARC: MOMTE to WORMI TOWER (2237) 05-000779

NOTICE FOR REASONS OF NATIONAL SECURITY PILOTS ARE REQUESTED TO AVOID FLIGHT AT AND BELOW 5000' MSL

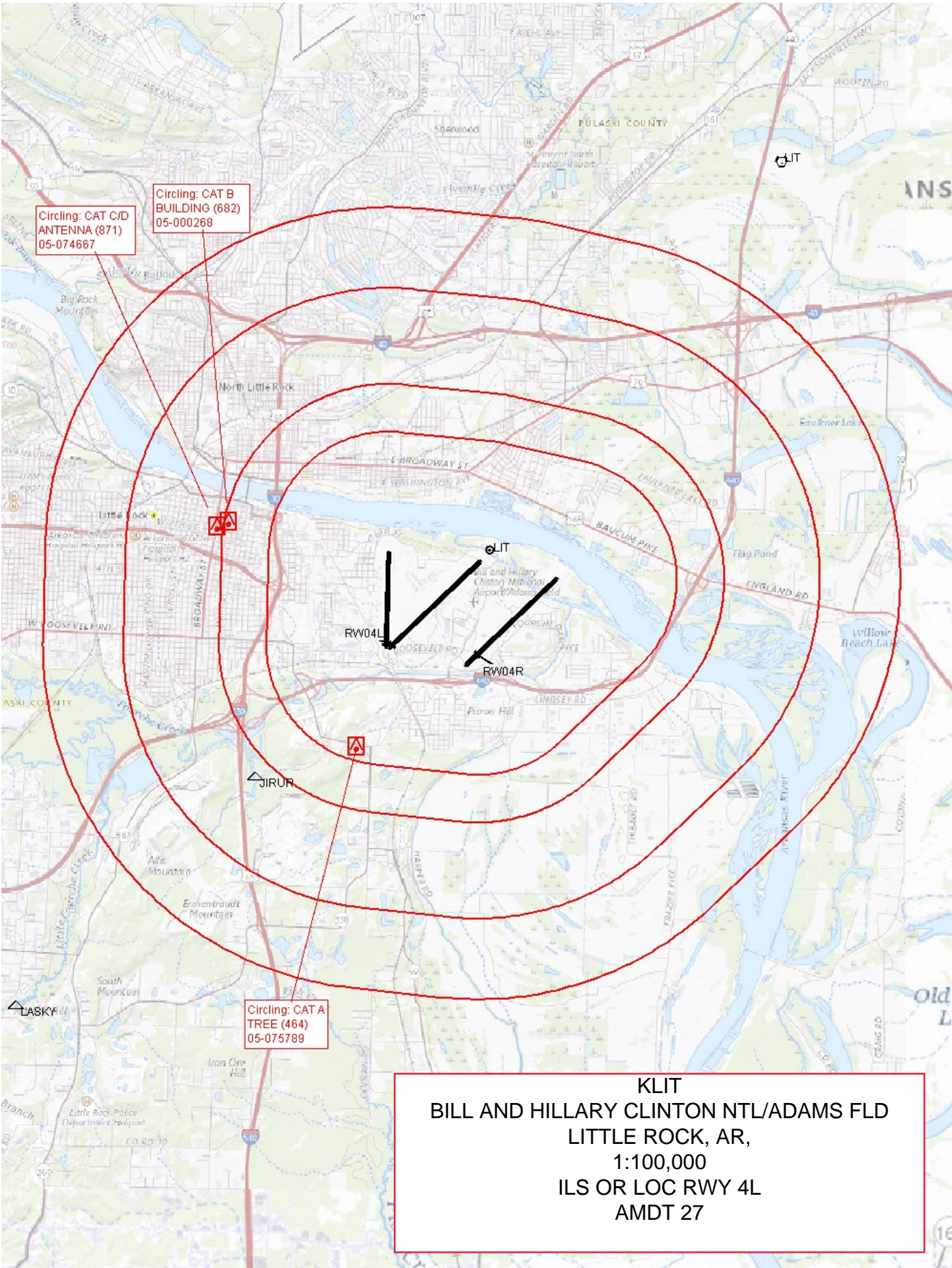




LOC Final S/D: JIRUR to RW04L
TREE (465)
05-078440

LOC Final: LASKY to RW04L
LOC Final: LASKY to JIRUR
AAO (710)

KLIT
BILL AND HILLARY CLINTON NTL/ADAMS FLD
LITTLE ROCK, AR,
1:100,000
ILS OR LOC RWY 4L
AMDT 27



Circling: CAT C/D
ANTENNA (871)
05-074667

Circling: CAT B
BUILDING (682)
05-000268

Circling: CAT A
TREE (464)
05-075789

KLIT
BILL AND HILLARY CLINTON NTL/ADAMS FLD
LITTLE ROCK, AR,
1:100,000
ILS OR LOC RWY 4L
AMDT 27