

Flight Procedures Cover Page	Task Action: FLIGHT CHECK	Task Type: IAP	Estimated Chart Date: 01/22/2026	APWS Task ID: 8BA450D422BF44FF905507679A8D9509	APWS Project ID: 0316F5ADBF8348F0B754C351937D3856
Procedure: LOC RWY 16 ORIG	Enroute: NO	Specialist: Johnson, Raymond	Agreement Number:		
Airport ID: KOQU	Airport City: NORTH KINGSTOWN		State: RI		
Facility ID: OQU	Facility Type: ILS	Flight Inspection Remark Type: New FC Slot			

Procedure Comments:
PROCEDURE COMPLETED USING PENDING AIRNAV DATA.

CONTACT: RAKE MCGRAW, AJV-A422 MANAGER, 405.954.8711


12/12/25: THIS IS AN UPDATED COPY OF THE FORM DEVELOPED ON 08/13/25.
 1. CHANGED REQUIRED EFFECTIVE DATE FROM ROUTINE TO 01/22/2026
 2. ADDED PENDING TO FLIGHT CHECKED BY



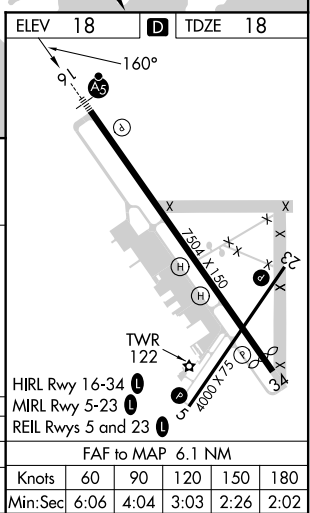
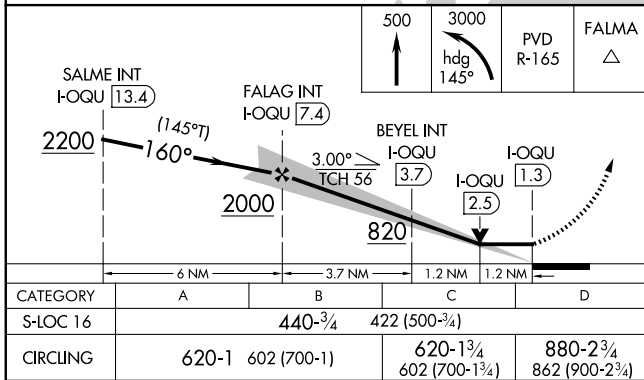
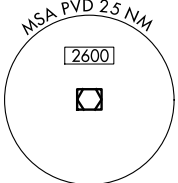
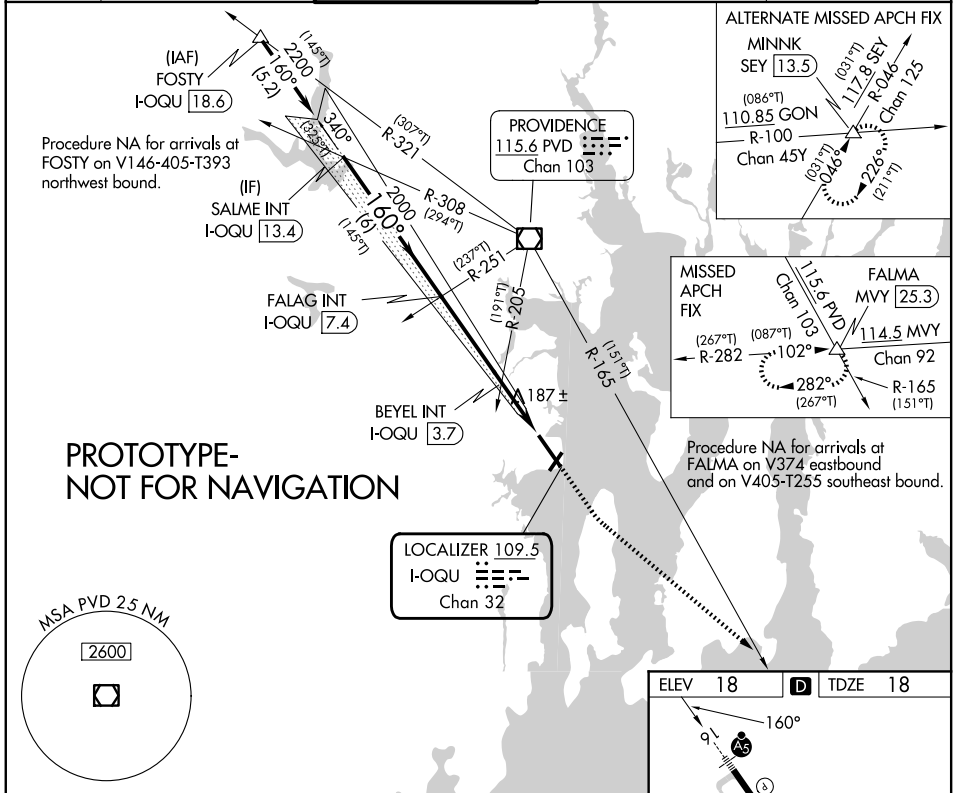
LOC/DME I-OQU 109.5 Chan 32	APP CRS 160°	Rwy Ldg TDZE 18 Apt Elev 18	7000
---	------------------------	---	-------------

LOC RWY 16

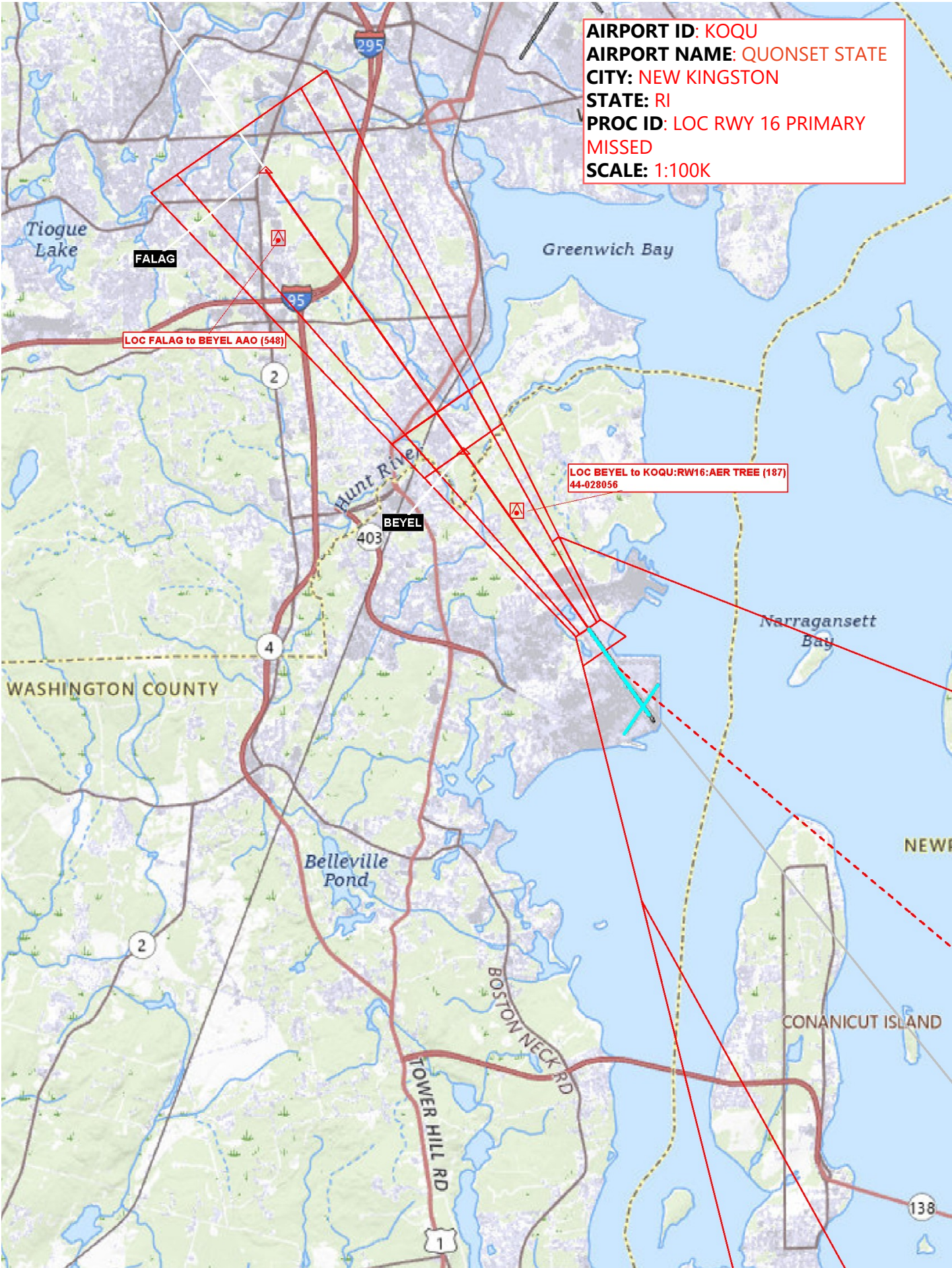
QUONSET STATE (OQU)

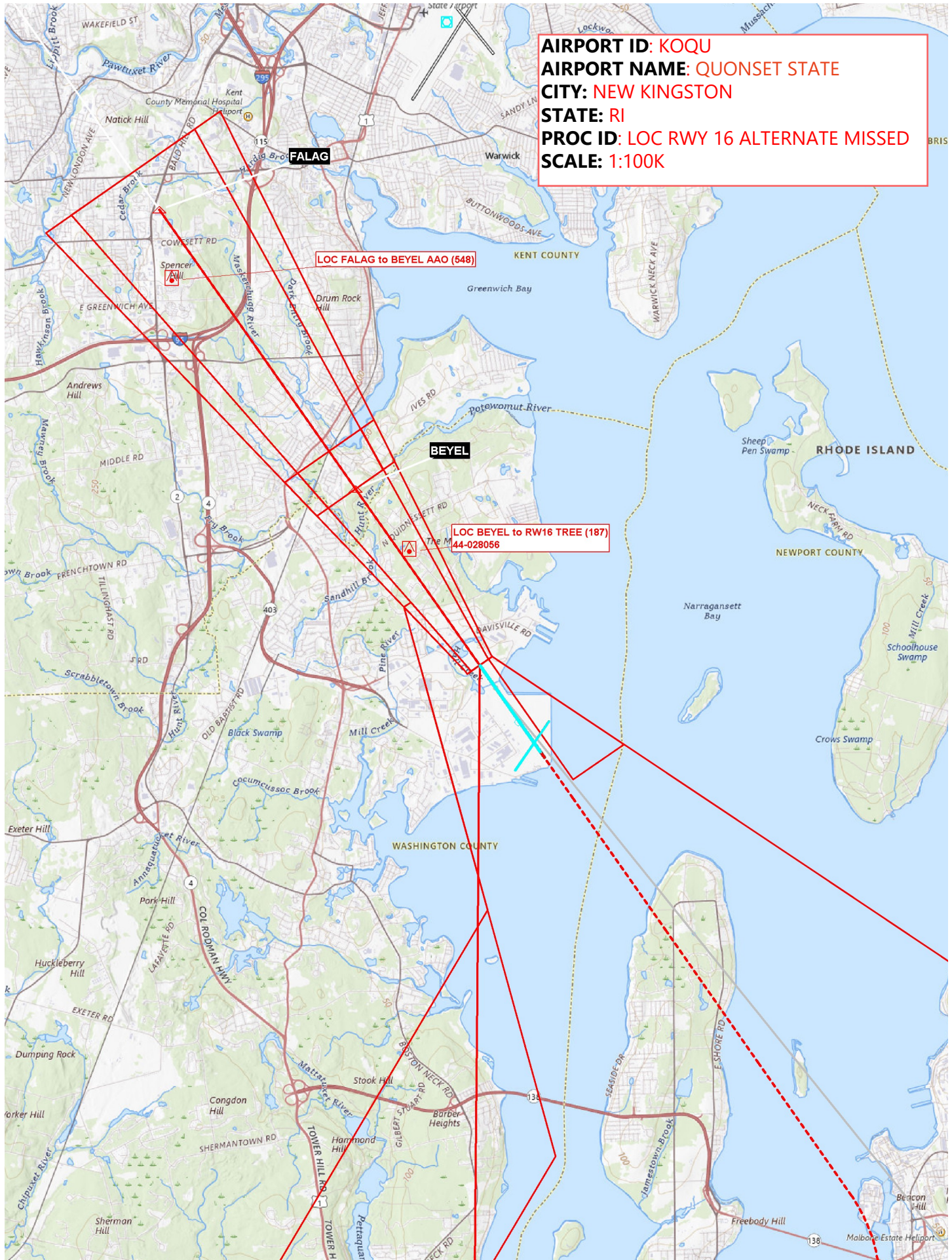
<p>⚠ Circling Rwy 5 NA at night. Rwy 16 helicopter visibility reduction below ¼ SM NA. For inop ALS, increase S-LOC 16 Cat A/B to 1 SM.</p>	<p>MALSR </p>	<p>MISSED APPROACH: Climb to 500 then climbing left turn to 3000 on heading 145° and PVD VOR/DME R-165 to FALMA INT/MVY 25.3 DME and hold.</p>	
		<p>⚠</p>	

ATIS 118.6	PROVIDENCE APP CON * 123.675 244.875	QUONSET TOWER * 126.35 (CTAF) 0 252.9	GND CON 134.5 226.675	UNICOM 122.95
----------------------	--	---	---------------------------------	-------------------------



AIRPORT ID: KOQU
AIRPORT NAME: QUONSET STATE
CITY: NEW KINGSTON
STATE: RI
PROC ID: LOC RWY 16 PRIMARY
MISSED
SCALE: 1:100K





AIRPORT ID: KOQU
AIRPORT NAME: QUONSET STATE
CITY: NEW KINGSTON
STATE: RI
PROC ID: LOC RWY 16 ALTERNATE MISSED
SCALE: 1:100K

FALAG

LOC FALAG to BEYEL AAO (548)

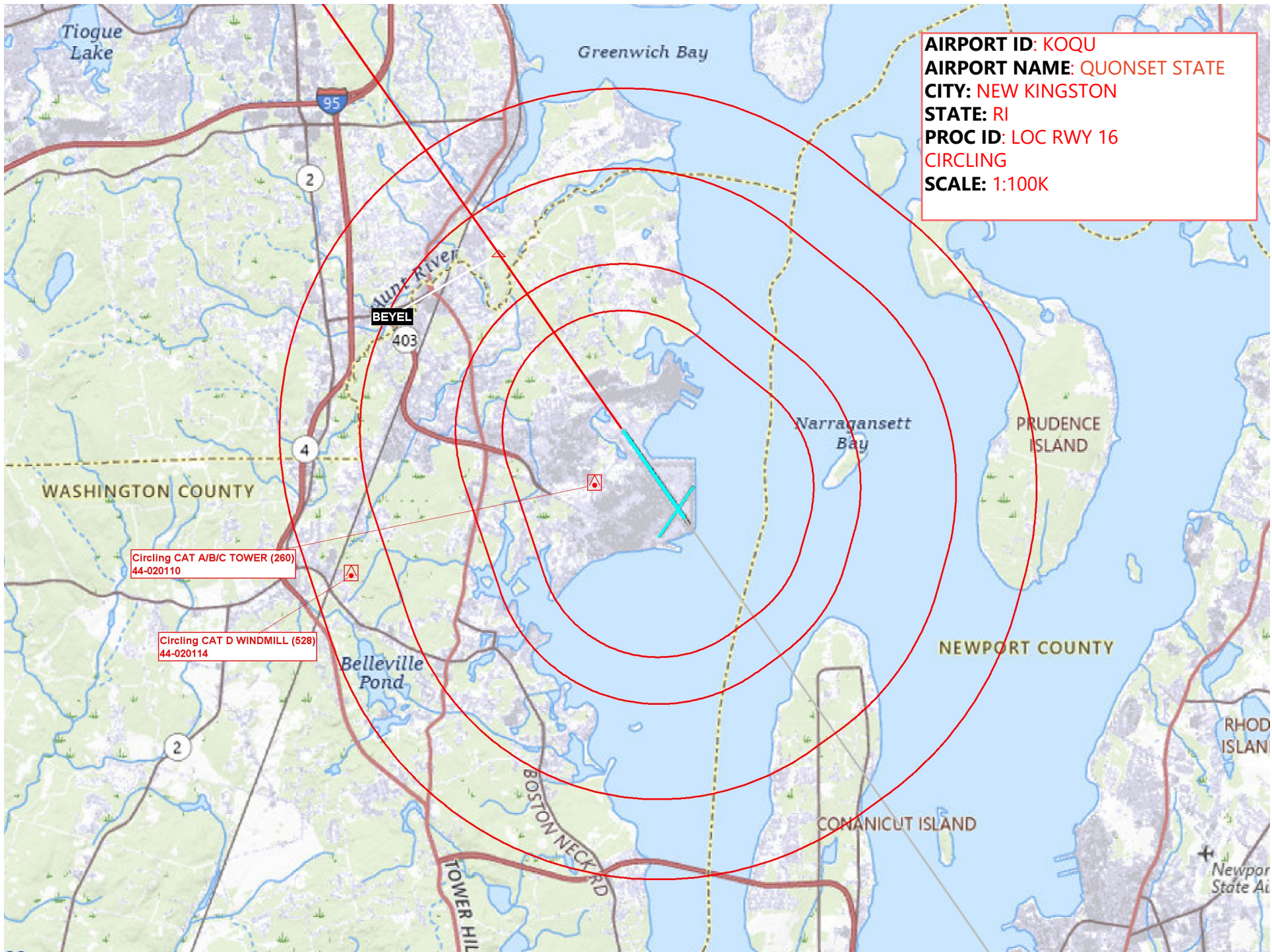
BEYEL

LOC BEYEL to RW16 TREE (187)
44-028056

WASHINGTON COUNTY

RHODE ISLAND

NEWPORT COUNTY



AIRPORT ID: KOQU
AIRPORT NAME: QUONSET STATE
CITY: NEW KINGSTON
STATE: RI
PROC ID: LOC RWY 16
CIRCLING
SCALE: 1:100K

Circling CAT A/B/C TOWER (260)
44-020110

Circling CAT D WINDMILL (528)
44-020114

AIRPORT ID: KOQU
AIRPORT NAME: QUONSET STATE
CITY: NEW KINGSTON
STATE: RI
PROC ID: LOC RWY 16
WITH PRIMARY MISSED
SCALE: 1:500K



FOSTY to SALME TOWER (1069)
44-000083

LOC FALAG to BEYEL AAO (548)

SALME to FALAG WINDMILL (985)
44-025291

LOC BEYEL to KOQU:RWY16:AER TREE (187)
44-028056

Missed Level Surface AAO (470)

CTC PROVIDENCE 20 NM ON 123.675
FALMA MA PAT 1 SHIP (260)
FALMA MA HOLD SHIP

CTC BOSTON APP WITHIN
20 NM ON 133.75

