

## DME DME Assessment Results for TRUPS6 path HVQ\_DILNN

### Results Summary

Flyability:	Completed
DME/DME:	Completed - No Critical DMEs
Name:	David C-CTR Cook
Project File:	C:\Users\David C-CTR Cook\Documents\TARGETS WORK\DME-DME WORK\17-9-2026 PUBLICATION\FRDMM - TRUPS FOR JACOB\TRUPS6\KDCA TRUPS6 ALL AIRPORTS DME-DME 20260225.tgs
Output File:	C:\Users\David C-CTR Cook\Documents\TARGETS WORK\DME-DME WORK\17-9-2026 PUBLICATION\FRDMM - TRUPS FOR JACOB\TRUPS6\02252026 FILES\ADW ONLY\KDCA [IFPA] TRUPS6 20260225_1410 EST\HVQ_DILNN\KDCA TRUPS6 RNAV STAR HVQ DILNN 20260225_1410 EST.pdf
Procedure Name:	TRUPS6
Software: DmeDmePlugin:	7.6.0
Date/Time:	02/25/2026 14:10 EST
Databases:	MITRE 3DEP 3 arcsec

### Failures

No Failures

### Warnings

No Warnings

### Informational

No Informational

### Notes For Flight Check

None

### Flight Plan

Name	Type	Lat/Lon	Altitude (ft)	VNAV Mode	Ground Speed (kts)	Turn Type	Leg Type
HVQ	WP	N38° 20' 58.8336", W081° 46' 11.6924"	16000	VNAV	280	FLY_BY	TF
FIMPA	WP	N38° 18' 54.8200", W080° 46' 00.7800"	16000	VNAV	280	FLY_BY	TF
DILNN	WP	N38° 16' 20.0500", W079° 43' 52.3100"	16000	VNAV	280	FLY_BY	TF

### Flyability

Flight Type:	RNAV_STAR
Selected Airport:	KDCA [IFPA]
Climb Gradient:	None assigned
Speeds:	200 Ground Speed to 11000 FT
	240 Ground Speed to 18000 FT
	260 Ground Speed to 24000 FT
	340 Ground Speed above 24000 FT
Descent During a Turn:	Allowed
VNAV Mode:	Flight Plan

**DME DME Assessment Results for TRUPS6 path HVQ\_DILNN**

<b>DME/DME</b>	
RNP:	RNP 2
Flight Mode:	Manual
Line of Sight (DTED Level 0 Max):	Evaluated
Inertial Drift:	Enabled
Initial Drift:	0.558 NM
INS Drift Rate:	8.0 NM/Hour
Range Mode:	OSV
RNP Edges:	Evaluated
Min DME Range:	3.0 NM
DME Types:	DME, VOR-DME, VORTAC, TACAN
DME Include Angles:	30 to 150
Critical DMEs:	Allowed
DoD Facilities:	Not included
Foreign Facilities:	Not included
High DMEs:	Included
Low DMEs:	Included
Terminal DMEs:	Included
Flight Check DMEs:	Not selected
Higher Altitudes:	Not Evaluated
Near Maximum Altitude:	Not Evaluated
Automatic ESVs:	Not enabled
Disabled DMEs:	None

<b>DME/DME (Continued)</b>										
<b>DMEs Used</b>										
#	Name	Lat/Lon	MAGVAR	Range	Type	Source	Critical	Status	Time	Distance
1	HVQ	N38° 20' 58.8336", W081° 46' 11.6924"	3.0 W	130	H		NO	Enabled	96.8 %	96.8 %
2	FLM	N38° 38' 57.9891", W084° 18' 38.1660"	0.0 E	130	DH		NO	Enabled	9.2 %	9.2 %
3	LWB	N37° 51' 49.9130", W080° 23' 30.5431"	0.0 E	40	L		NO	Enabled	54.6 %	54.6 %
4	ZZV	N39° 56' 27.0911", W081° 53' 33.3687"	0.0 E	130	DH		NO	Enabled	77.8 %	77.8 %
5	GVE	N38° 00' 48.9578", W078° 09' 10.8957"	6.0 W	130	H		NO	Enabled	24.5 %	24.5 %
6	HNN	N38° 45' 14.8487", W082° 01' 34.2034"	-0.0 E	130	H		NO	Enabled	82.7 %	82.7 %
7	MOL	N37° 54' 03.1524", W079° 06' 22.2526"	5.0 W	40	L		NO	Enabled	0.8 %	0.8 %
8	BKW	N37° 46' 49.0788", W081° 07' 24.4398"	6.0 W	130	DH		NO	Enabled	99.1 %	99.1 %
9	ESL	N39° 13' 31.7740", W078° 59' 22.2000"	6.0 W	130	DL		NO	Enabled	85.8 %	85.8 %
10	CSN	N38° 38' 28.3277", W077° 51' 55.7979"	6.0 W	130	H		NO	Enabled	9.1 %	9.1 %

<b>Flight Check DME Selection</b>						
Distance [NM]	Selected DMEs					Alternate
0.0	ZZV	FLM	HNN	BKW		
3.1	HVQ	ZZV	FLM	HNN	BKW	
8.9	HVQ	ZZV				
9.7	HVQ	ZZV	BKW			
12.4	HVQ	BKW	ZZV	HNN		
13.7	HVQ	BKW	ZZV	ESL	HNN	
75.1	HVQ	LWB	HNN	GVE	ESL	BKW
83.4	LWB	GVE	HVQ	ESL	BKW	
92.9	GVE	ESL	HVQ	CSN	BKW	

**DME DME Assessment Results for TRUPS6 path HVQ\_DILNN**

**Inertial Drift Segments**

#	Start Location	End Location	Length [NM]

**Available DMEs by Waypoints**

Waypoint Before	Waypoint After	DME List	Suggested DMEs
HVQ	FIMPA	HVQ, FLM, LWB, ZZV, HNN, BKW, ESL	
FIMPA	DILNN	HVQ, LWB, ZZV, GVE, HNN, MOL, BKW, ESL, CSN	

**User Data Files**

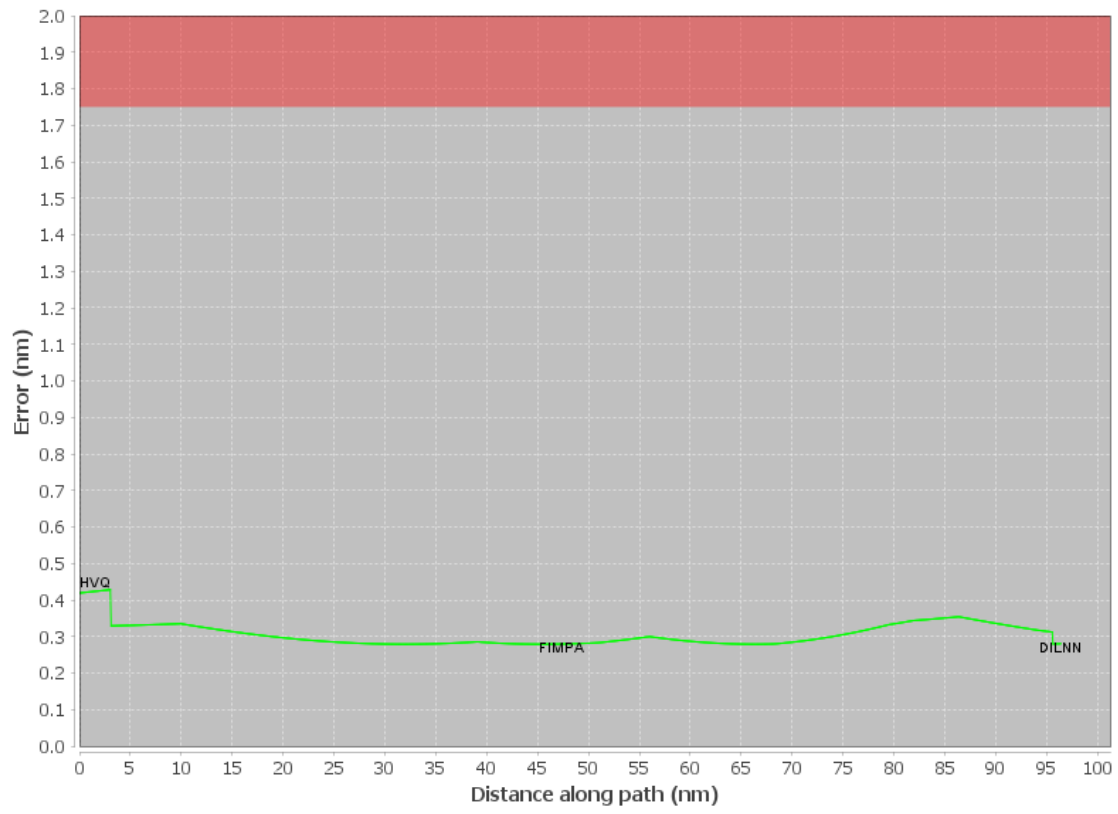
#	File Name
	None

**User DMEs**

#	Name	Lat/Lon	MAGVAR	Range	Elevation [ft]	Frequency	Replaces	Status
								None

# DME DME Assessment Results for TRUPS6 path HVQ\_DILNN

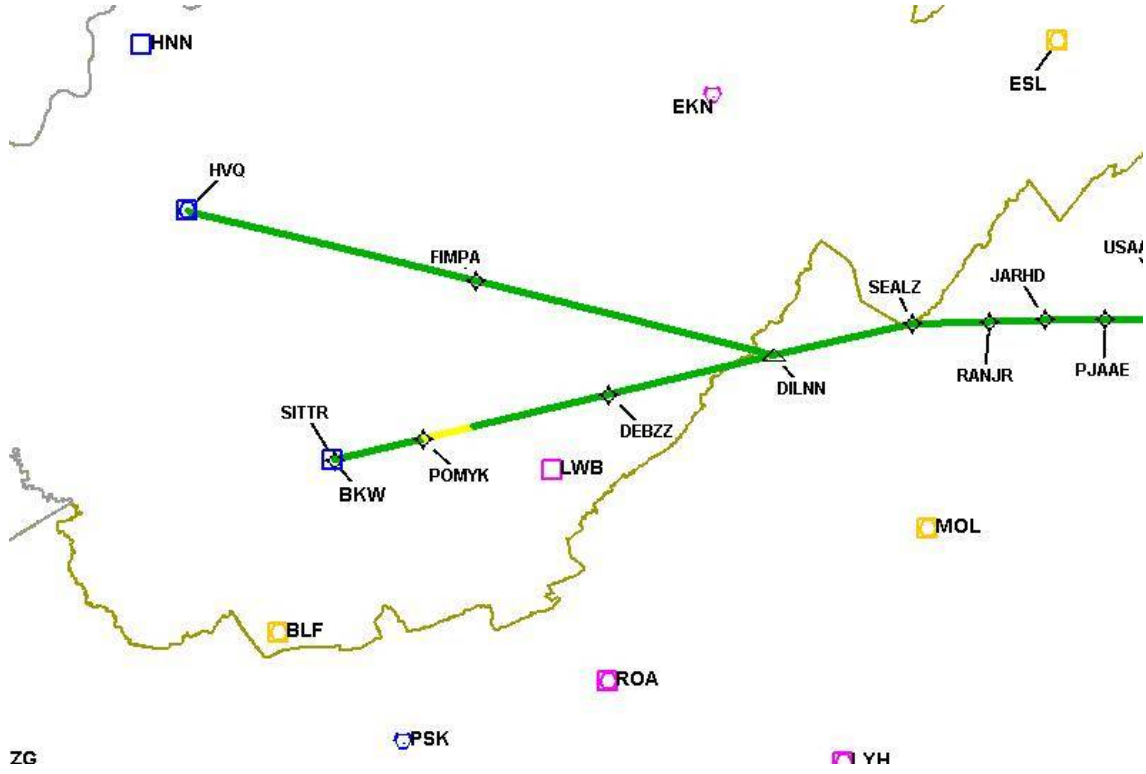
## DME Error





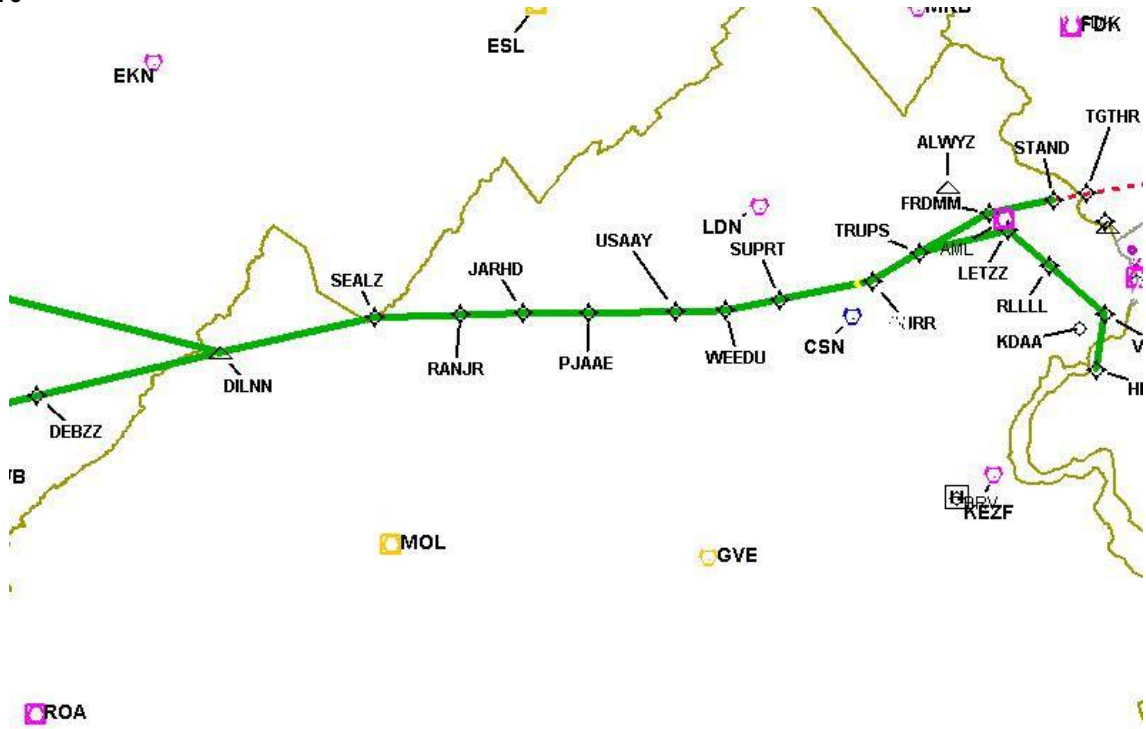
# DME DME Assessment Results for TRUPS6 path HVQ\_DILNN

Graphic Depiction 2



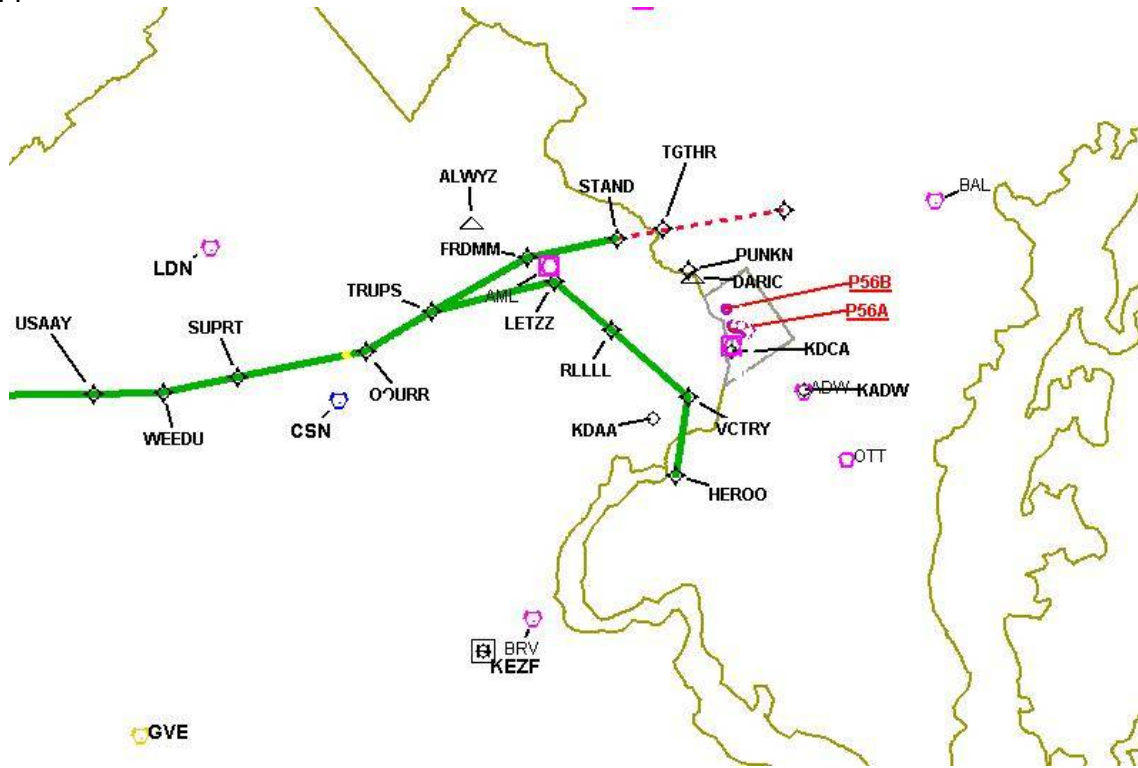
# DME DME Assessment Results for TRUPS6 path HVQ\_DILNN

Graphic Depiction 3



# DME DME Assessment Results for TRUPS6 path HVQ\_DILNN

Graphic Depiction 4



## DME DME Assessment Results for TRUPS6 path SITTR\_DARIC

### Results Summary

Flyability:	Completed
DME/DME:	Completed - No Critical DMEs
Name:	David C-CTR Cook
Project File:	C:\Users\David C-CTR Cook\Documents\TARGETS WORK\DME-DME WORK\7-9-2026 PUBLICATION\FRDMM - TRUPS FOR JACOB\FRDMM7\ALL AIRPORTS\KDCA FRDMM7 ALL AIRPORTS DME-DME 20260225.tgs
Output File:	C:\Users\David C-CTR Cook\Documents\TARGETS WORK\DME-DME WORK\7-9-2026 PUBLICATION\FRDMM - TRUPS FOR JACOB\TRUPS6\02252026 FILES\ALL AIRPORTS\KDCA [IFPA] TRUPS6 20260225_1358 EST\SITTR_DARIC\KDCA TRUPS6 RNAV STAR SITTR DARIC 20260225_1358 EST.pdf
Procedure Name:	TRUPS6
Software: DmeDmePlugin:	7.6.0
Date/Time:	02/25/2026 13:58 EST
Databases:	MITRE 3DEP 3 arcsec

### Failures

No Failures

### Warnings

No Warnings

### Informational

No Informational

### Notes For Flight Check

None

**DME DME Assessment Results for TRUPS6 path SITTR\_DARIC**

<b>Flight Plan</b>							
Name	Type	Lat/Lon	Altitude (ft)	VNAV Mode	Ground Speed (kts)	Turn Type	Leg Type
SITTR	WP	N37° 46' 49.1300", W081° 07' 23.7000"	16000	VNAV	280	FLY_BY	TF
POMYK	WP	N37° 52' 50.9400", W080° 50' 20.6400"	16000	VNAV	280	FLY_BY	TF
DEBZZ	WP	N38° 05' 13.9100", W080° 15' 18.0500"	16000	VNAV	280	FLY_BY	TF
DILNN	WP	N38° 16' 20.0500", W079° 43' 52.3100"	16000	VNAV	280	FLY_BY	TF
SEALZ	WP	N38° 25' 23.5600", W079° 17' 26.1600"	14000	VNAV	280	FLY_BY	TF
RANJR	WP	N38° 28' 02.9700", W079° 02' 20.0800"	14000	VNAV	280	FLY_BY	TF
JARHD	WP	N38° 29' 59.7200", W078° 51' 08.6000"	13000	VNAV	280	FLY_BY	TF
PJAAE	WP	N38° 31' 51.3600", W078° 39' 20.3400"	13000	VNAV	280	FLY_BY	TF
USAAY	WP	N38° 34' 19.7100", W078° 23' 46.8300"	12000	VNAV	280	FLY_BY	TF
WEEDU	WP	N38° 35' 53.9700", W078° 14' 44.3600"	12000	VNAV	280	FLY_BY	TF
SUPRT	WP	N38° 38' 52.1900", W078° 05' 33.6900"	10000	VNAV	280	FLY_BY	TF
OOURR	WP	N38° 43' 58.0900", W077° 49' 39.5000"	6000	VNAV	250	FLY_BY	TF
TRUPS	WP	N38° 49' 15.6400", W077° 42' 01.9600"	6000	VNAV	250	FLY_BY	TF
FRDMM	WP	N38° 56' 34.5400", W077° 31' 01.3900"	6000	VNAV	240	FLY_BY	TF
STAND	WP	N39° 00' 16.1700", W077° 19' 57.8400"	2000	VNAV	200	FLY_OVER	TF
TGTHR	WP	N39° 02' 08.4100", W077° 14' 23.6900"	2000	VNAV	200	FLY_BY	TF
DARIC	WP	N38° 57' 54.0450", W077° 09' 11.4840"	2000	VNAV	200	FLY_OVER	TF

<b>Flyability</b>	
Flight Type:	RNAV_STAR
Selected Airport:	KDCA [IFPA]
Climb Gradient:	None assigned
Speeds:	200 Ground Speed to 11000 FT
	240 Ground Speed to 18000 FT
	260 Ground Speed to 24000 FT
	340 Ground Speed above 24000 FT
Descent During a Turn:	Allowed
VNAV Mode:	Flight Plan

**DME DME Assessment Results for TRUPS6 path SITTR\_DARIC**

<b>DME/DME</b>	
RNP:	RNP 2
Flight Mode:	Manual
Line of Sight (DTED Level 0 Max):	Evaluated
Inertial Drift:	Enabled
Initial Drift:	0.558 NM
INS Drift Rate:	8.0 NM/Hour
Range Mode:	OSV
RNP Edges:	Evaluated
Min DME Range:	3.0 NM
DME Types:	DME, VOR-DME, VORTAC, TACAN
DME Include Angles:	30 to 150
Critical DMEs:	Allowed
DoD Facilities:	Not included
Foreign Facilities:	Not included
High DMEs:	Included
Low DMEs:	Included
Terminal DMEs:	Included
Flight Check DMEs:	Not selected
Higher Altitudes:	Not Evaluated
Near Maximum Altitude:	Not Evaluated
Automatic ESVs:	Not enabled
Disabled DMEs:	None

**DME DME Assessment Results for TRUPS6 path SITTR\_DARIC**

<b>DME/DME (Continued)</b>										
<b>DMEs Used</b>										
<b>#</b>	<b>Name</b>	<b>Lat/Lon</b>	<b>MAGVAR</b>	<b>Range</b>	<b>Type</b>	<b>Source</b>	<b>Critical</b>	<b>Status</b>	<b>Time</b>	<b>Distance</b>
1	AML	N38° 56' 04.5329", W077° 28' 00.1263"	8.0 W	40	L		NO	Enabled	25.4 %	23.3 %
2	EMI	N39° 29' 42.0266", W076° 58' 42.8591"	8.0 W	130	H		NO	Enabled	9.5 %	7.5 %
3	HVQ	N38° 20' 58.8336", W081° 46' 11.6924"	3.0 W	130	H		NO	Enabled	34.1 %	35.5 %
4	DCA	N38° 51' 34.0300", W077° 02' 11.1700"	9.0 W	40	L		NO	Enabled	23.2 %	20.2 %
5	BRV	N38° 20' 10.5264", W077° 21' 10.3159"	9.0 W	40	L		NO	Enabled	13.1 %	12.7 %
6	HNN	N38° 45' 14.8487", W082° 01' 34.2034"	-0.0 E	130	H		NO	Enabled	24.4 %	25.4 %
7	MOL	N37° 54' 03.1524", W079° 06' 22.2526"	5.0 W	40	L		NO	Enabled	18.6 %	19.3 %
8	FDK	N39° 24' 44.0499", W077° 22' 30.4179"	8.0 W	40	L		NO	Enabled	8.3 %	7.6 %
9	BAL	N39° 10' 15.8283", W076° 39' 40.5225"	11.0 W	40	L		NO	Enabled	10.6 %	8.4 %
10	OTT	N38° 42' 21.1352", W076° 44' 41.0854"	10.0 W	40	L		NO	Enabled	1.8 %	1.6 %
11	BKW	N37° 46' 49.0788", W081° 07' 24.4398"	6.0 W	130	DH		NO	Enabled	43.2 %	44.9 %
12	ADW	N38° 48' 25.9900", W076° 51' 58.5200"	10.0 W	40	L		NO	Enabled	16.3 %	13.6 %
13	LWB	N37° 51' 49.9130", W080° 23' 30.5431"	0.0 E	40	L		NO	Enabled	33.5 %	34.9 %
14	GVE	N38° 00' 48.9578", W078° 09' 10.8957"	6.0 W	130	H		NO	Enabled	19.5 %	20.2 %
15	LDN	N38° 51' 15.8344", W078° 12' 20.0559"	6.0 W	40	L		NO	Enabled	37.1 %	37.1 %
16	MRB	N39° 23' 08.0600", W077° 50' 54.0820"	7.0 W	40	L		NO	Enabled	11.3 %	10.4 %
17	BLF	N37° 18' 23.1851", W081° 11' 39.3697"	3.0 W	40	L		NO	Enabled	7 %	7.3 %
18	ESL	N39° 13' 31.7740", W078° 59' 22.2000"	6.0 W	130	DL		NO	Enabled	73.8 %	76.7 %
19	CSN	N38° 38' 28.3277", W077° 51' 55.7979"	6.0 W	130	H		NO	Enabled	35.4 %	35 %

**DME DME Assessment Results for TRUPS6 path SITTR\_DARIC**

<b>Flight Check DME Selection</b>						
<b>Distance [NM]</b>	<b>Selected DMEs</b>					<b>Alternate</b>
0.0	LWB	BLF	HNN	HVQ		
3.9	LWB	BLF	HNN	BKW	HVQ	
13.3	HNN	BKW	HVQ	ESL	LWB	
14.6	HNN	ESL	HVQ	LWB		
15.0	HVQ	BLF	LWB	HNN	BKW	ESL
16.9	HNN	BKW	HVQ	ESL	LWB	
23.0	HNN	ESL	HVQ	LWB		
27.4	LWB	BKW	HNN	ESL	HVQ	
52.3	HVQ	LWB	ESL	GVE	BKW	
56.9	HVQ	ESL	LWB	GVE		
63.3	GVE	ESL	HVQ	LWB	CSN	
71.8	GVE	ESL	HVQ	CSN	BKW	
73.1	GVE	ESL	CSN	BKW		
73.5	ESL	MOL	GVE	BKW	CSN	
74.4	ESL	MOL	GVE	BKW		
74.5	ESL	MOL	BKW			
113.0	BKW	ESL				
114.7	ESL	LDN	BKW			
116.0	ESL	LDN				
123.5	ESL	CSN	LDN			
134.3	GVE	CSN	ESL	LDN		
147.7	GVE	CSN	LDN	ESL	AML	
148.1	LDN	CSN	ESL	AML		
155.1	AML	LDN	ESL			
157.9	AML	LDN	ESL	BRV		
161.1	BRV	AML	LDN			
164.3	DCA	CSN	BRV	AML	ESL	LDN
165.2	BRV	AML	LDN	DCA		
165.8	BRV	AML	LDN	CSN	DCA	
184.0	FDK	ADW	DCA	MRB	AML	LDN
184.9	FDK	ADW	DCA	MRB	CSN	LDN
187.8	MRB	CSN	LDN	ADW	DCA	
191.0	MRB	CSN	OTT	EMI	AML	DCA
191.4	OTT	EMI	DCA	ADW	CSN	FDK
191.8	EMI	DCA	ADW	FDK	BAL	CSN
193.5	EMI	DCA	ADW	CSN	BAL	
194.5	EMI	DCA	ADW	BAL		
195.9	ADW	EMI	DCA	AML	BAL	

<b>Inertial Drift Segments</b>			
<b>#</b>	<b>Start Location</b>	<b>End Location</b>	<b>Length [NM]</b>

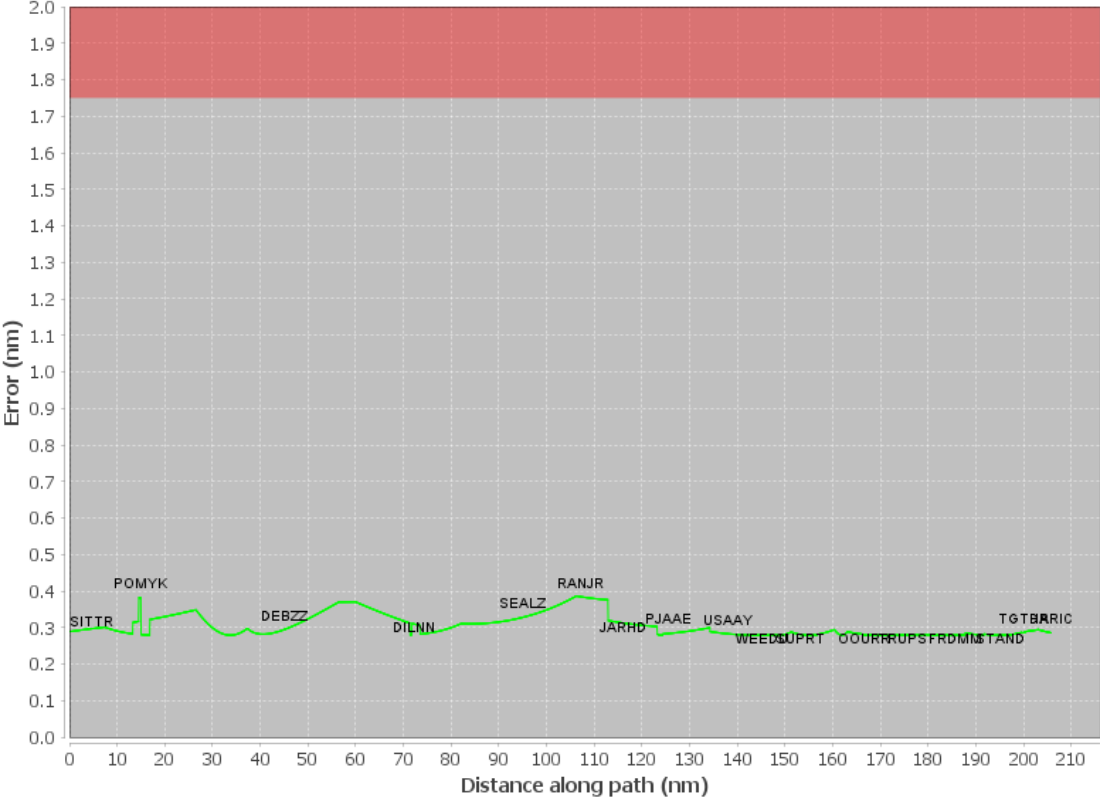
**DME DME Assessment Results for TRUPS6 path SITTR\_DARIC**

<b>Available DMEs by Waypoints</b>			
<b>Waypoint Before</b>	<b>Waypoint After</b>	<b>DME List</b>	<b>Suggested DMEs</b>
SITTR	POMYK	HVQ, LWB, HNN, BLF, BKW, ESL	
POMYK	DEBZZ	HVQ, LWB, HNN, BLF, ESL, BKW	
DEBZZ	DILNN	HVQ, LWB, GVE, HNN, MOL, BKW, ESL, CSN	
DILNN	SEALZ	HVQ, GVE, MOL, ESL, BKW, CSN	
SEALZ	RANJR	MOL, BKW, ESL	
RANJR	JARHD	LDN, MOL, BKW, ESL	
JARHD	PJAAE	LDN, ESL, CSN	
PJAAE	USAAY	LDN, GVE, ESL, CSN	
USAAY	WEEDU	GVE, LDN, CSN, ESL	
WEEDU	SUPRT	AML, GVE, LDN, ESL, CSN	
SUPRT	OOURR	AML, DCA, LDN, BRV, MRB, ESL, CSN	
OOURR	TRUPS	AML, DCA, BRV, LDN, MRB, CSN	
TRUPS	FRDMM	AML, DCA, ADW, BRV, LDN, MRB, FDK, CSN	
FRDMM	STAND	EMI, AML, DCA, ADW, LDN, MRB, FDK, BAL, OTT, CSN	
STAND	TGTHR	EMI, AML, DCA, ADW, BAL	
TGTHR	DARIC	AML, EMI, DCA, ADW, BAL	

<b>User Data Files</b>								
<b>#</b>	<b>File Name</b>							
None								
<b>User DMEs</b>								
<b>#</b>	<b>Name</b>	<b>Lat/Lon</b>	<b>MAGVAR</b>	<b>Range</b>	<b>Elevation [ft]</b>	<b>Frequency</b>	<b>Replaces</b>	<b>Status</b>
None								

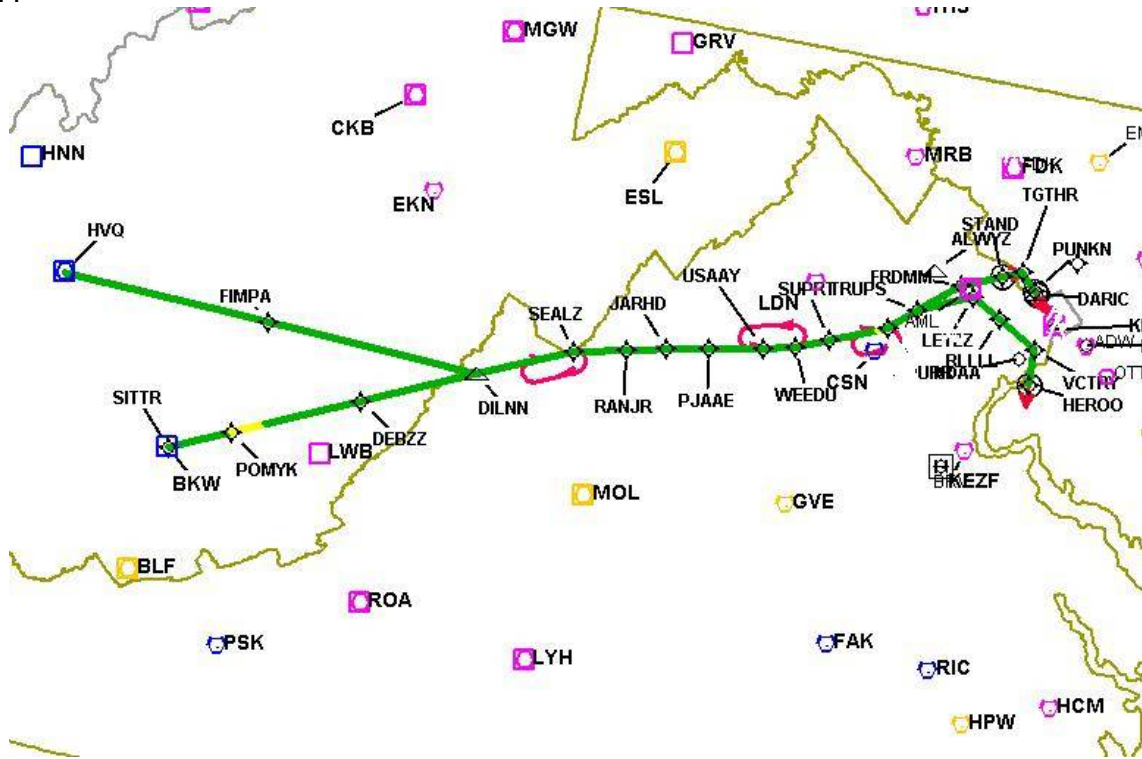
DME DME Assessment Results for TRUPS6 path SITTR\_DARIC

DME Error



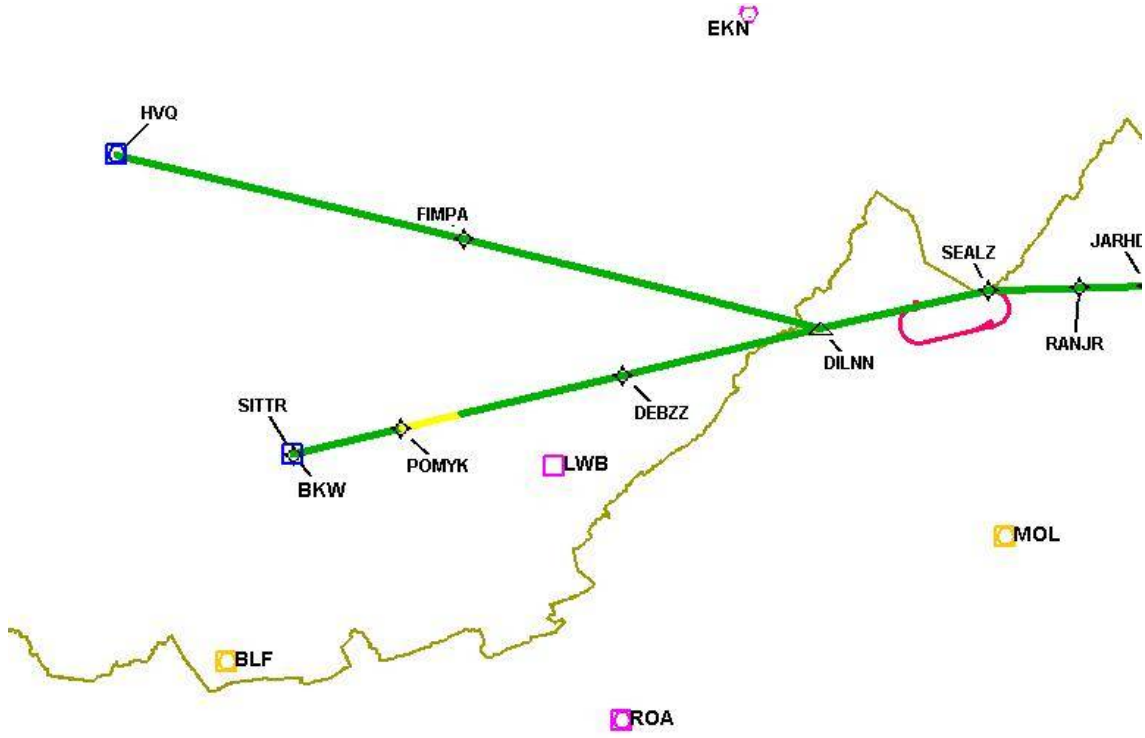
# DME DME Assessment Results for TRUPS6 path SITTR\_DARIC

Graphic Depiction 1



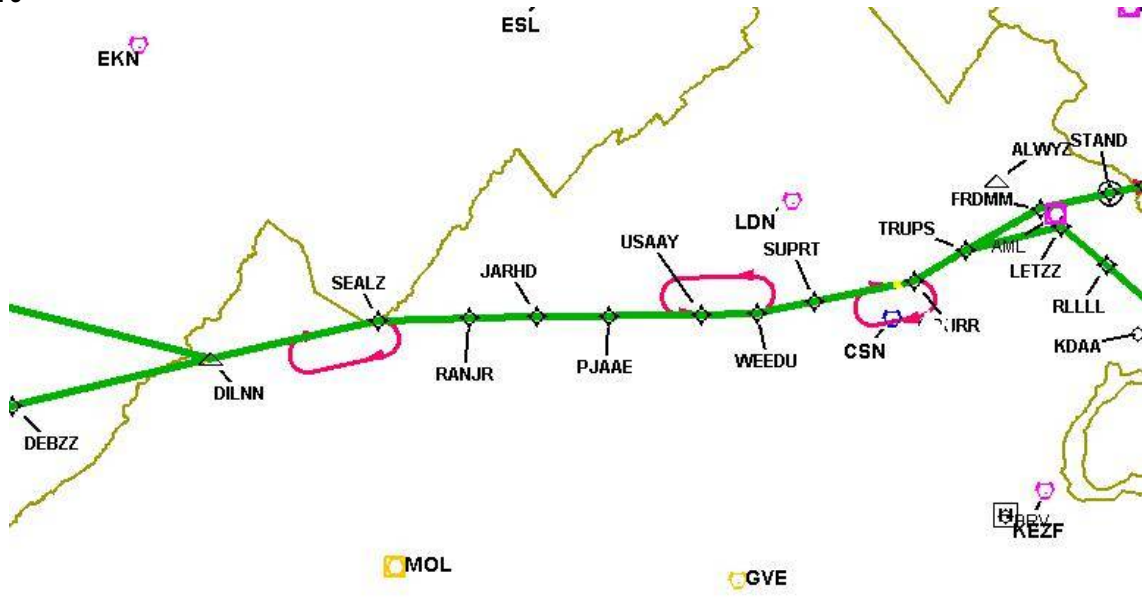
# DME DME Assessment Results for TRUPS6 path SITTR\_DARIC

Graphic Depiction 2



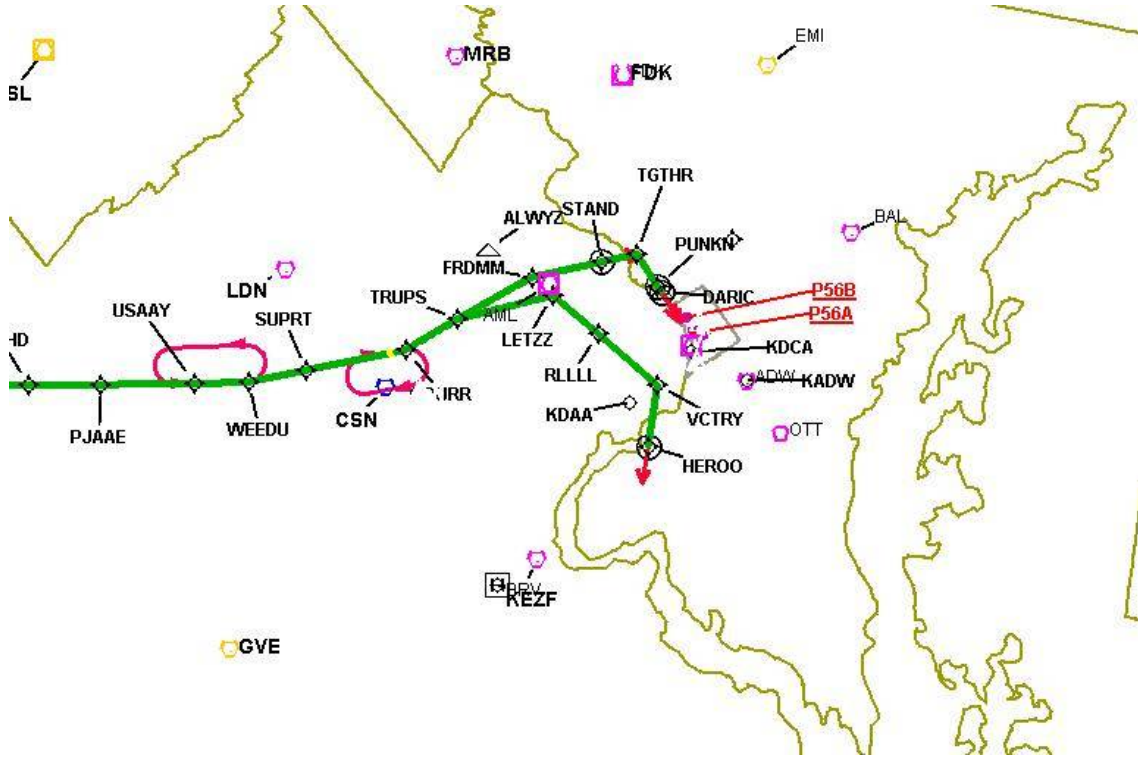
# DME DME Assessment Results for TRUPS6 path SITTR\_DARIC

Graphic Depiction 3



# DME DME Assessment Results for TRUPS6 path SITTR\_DARIC

Graphic Depiction 4



## DME DME Assessment Results for FRDMM7 path TGTHR\_PUNKN

### Results Summary

Flyability:	Completed
DME/DME:	Completed - No Critical DMEs
Name:	David C-CTR Cook
Project File:	C:\Users\David C-CTR Cook\Documents\TARGETS WORK\DME-DME WORK\17-9-2026 PUBLICATION\FRDMM - TRUPS FOR JACOB\FRDMM7\DCA ONLY\TRUPS_FRDMM DCA ONLY DME-DME 20251212.tgs
Output File:	C:\Users\David C-CTR Cook\Documents\TARGETS WORK\DME-DME WORK\17-9-2026 PUBLICATION\FRDMM - TRUPS FOR JACOB\FRDMM7\DCA ONLY\KDCA [IFPA] FRDMM7 20260225_1240 EST\TGTHR_PUNKN\KDCA FRDMM7 RNAV STAR TGTHR PUNKN 20260225_1240 EST.pdf
Procedure Name:	FRDMM7
Software: DmeDmePlugin:	7.6.0
Date/Time:	02/25/2026 12:40 EST
Databases:	MITRE 3DEP 3 arcsec

### Failures

No Failures

### Warnings

No Warnings

### Informational

No Informational

### Notes For Flight Check

None

### Flight Plan

Name	Type	Lat/Lon	Altitude (ft)	VNAV Mode	Ground Speed (kts)	Turn Type	Leg Type
TGTHR	WP	N39° 02' 08.4100", W077° 14' 23.6900"	2000	VNAV	200	FLY_BY	TF
PUNKN	WP	N38° 58' 29.9929", W077° 09' 59.1523"	2000	VNAV	200	FLY_OVER	TF

### Flyability

Flight Type:	RNAV_STAR
Selected Airport:	KDCA [IFPA]
Climb Gradient:	None assigned
Speeds:	200 Ground Speed to 11000 FT
	240 Ground Speed to 18000 FT
	260 Ground Speed to 24000 FT
	340 Ground Speed above 24000 FT
Descent During a Turn:	Allowed
VNAV Mode:	Flight Plan

## DME DME Assessment Results for FRDMM7 path TGTHR\_PUNKN

DME/DME	
RNP:	RNP 2
Flight Mode:	Manual
Line of Sight (DTED Level 0 Max):	Evaluated
Inertial Drift:	Enabled
Initial Drift:	0.558 NM
INS Drift Rate:	8.0 NM/Hour
Range Mode:	OSV
RNP Edges:	Evaluated
Min DME Range:	3.0 NM
DME Types:	DME, VOR-DME, VORTAC, TACAN
DME Include Angles:	30 to 150
Critical DMEs:	Allowed
DoD Facilities:	Not included
Foreign Facilities:	Not included
High DMEs:	Included
Low DMEs:	Included
Terminal DMEs:	Included
Flight Check DMEs:	Not selected
Higher Altitudes:	Not Evaluated
Near Maximum Altitude:	Not Evaluated
Automatic ESVs:	Not enabled
Disabled DMEs:	None

DME/DME (Continued)										
DMEs Used										
#	Name	Lat/Lon	MAGVAR	Range	Type	Source	Critical	Status	Time	Distance
1	AML	N38° 56' 04.5329", W077° 28' 00.1263"	8.0 W	40	L		NO	Enabled	100 %	100 %
2	EMI	N39° 29' 42.0266", W076° 58' 42.8591"	8.0 W	130	H		NO	Enabled	100 %	100 %
3	DCA	N38° 51' 34.0300", W077° 02' 11.1700"	9.0 W	40	L		NO	Enabled	100 %	100 %
4	ADW	N38° 48' 25.9900", W076° 51' 58.5200"	10.0 W	40	L		NO	Enabled	100 %	100 %
5	BAL	N39° 10' 15.8283", W076° 39' 40.5225"	11.0 W	40	L		NO	Enabled	100 %	100 %

Flight Check DME Selection						
Distance [NM]	Selected DMEs					Alternate
0.0	AML	DCA	ADW	EMI	BAL	

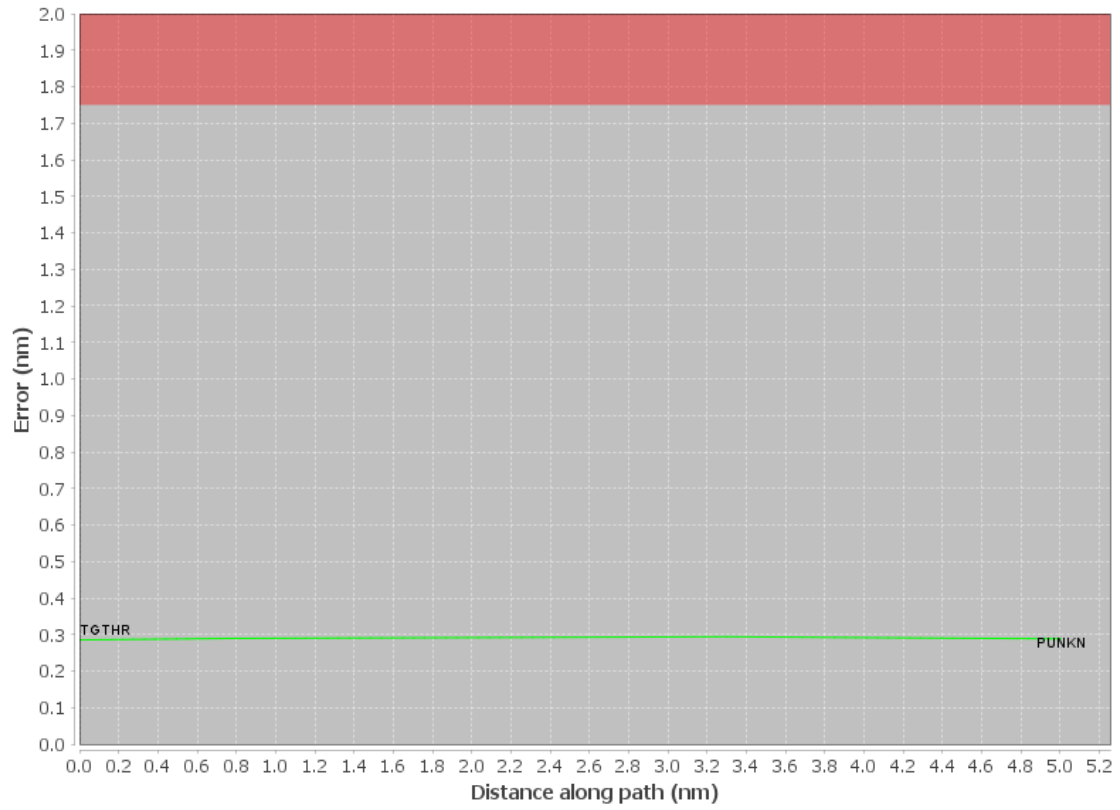
Inertial Drift Segments			
#	Start Location	End Location	Length [NM]

Available DMEs by Waypoints			
Waypoint Before	Waypoint After	DME List	Suggested DMEs
TGTHR	PUNKN	AML, EMI, DCA, ADW, BAL	

User Data Files								
#	File Name							
	None							
User DMEs								
#	Name	Lat/Lon	MAGVAR	Range	Elevation [ft]	Frequency	Replaces	Status
	None							

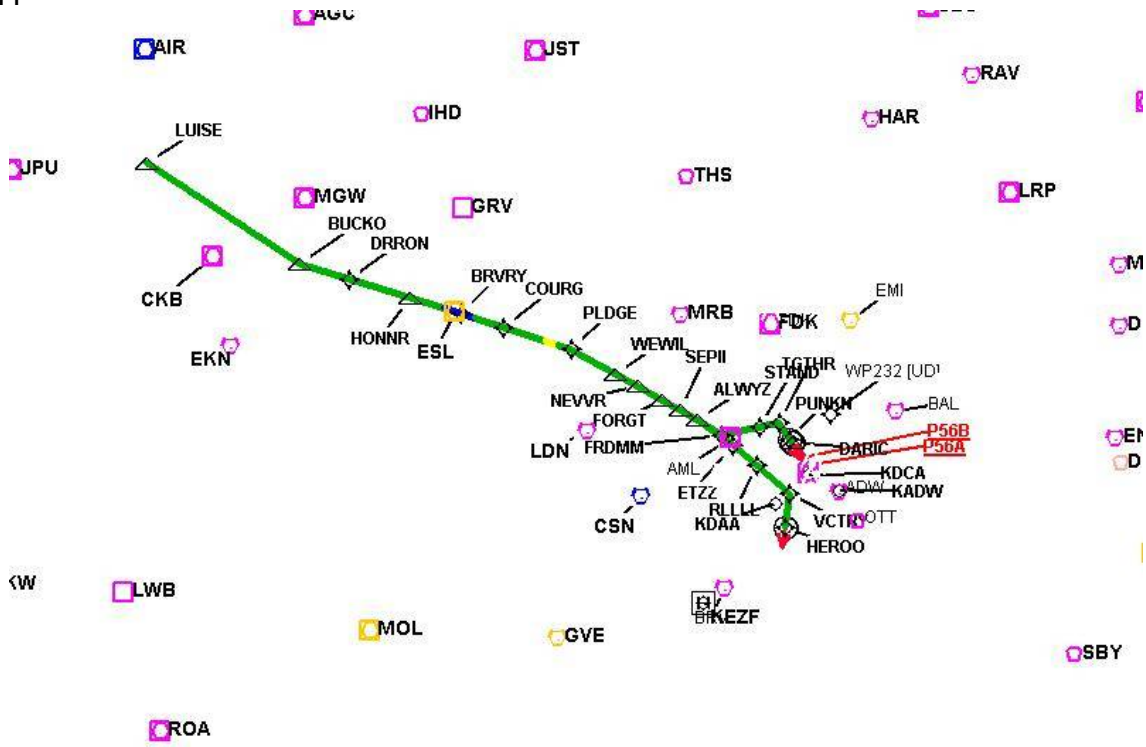
# DME DME Assessment Results for FRDMM7 path TGTHR\_PUNKN

## DME Error



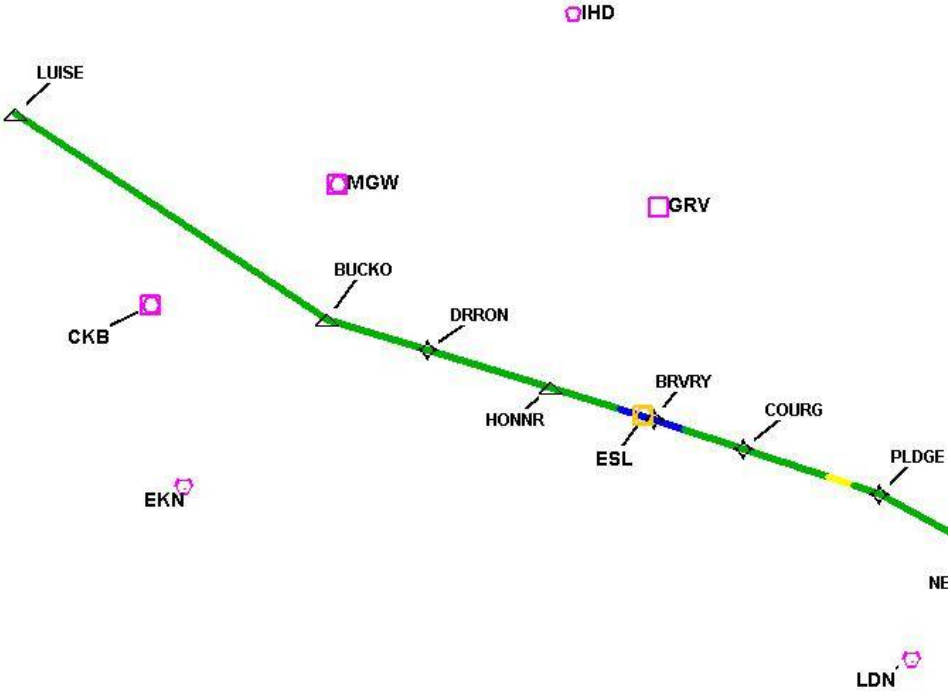
# DME DME Assessment Results for FRDMM7 path TGTHR\_PUNKN

Graphic Depiction 1



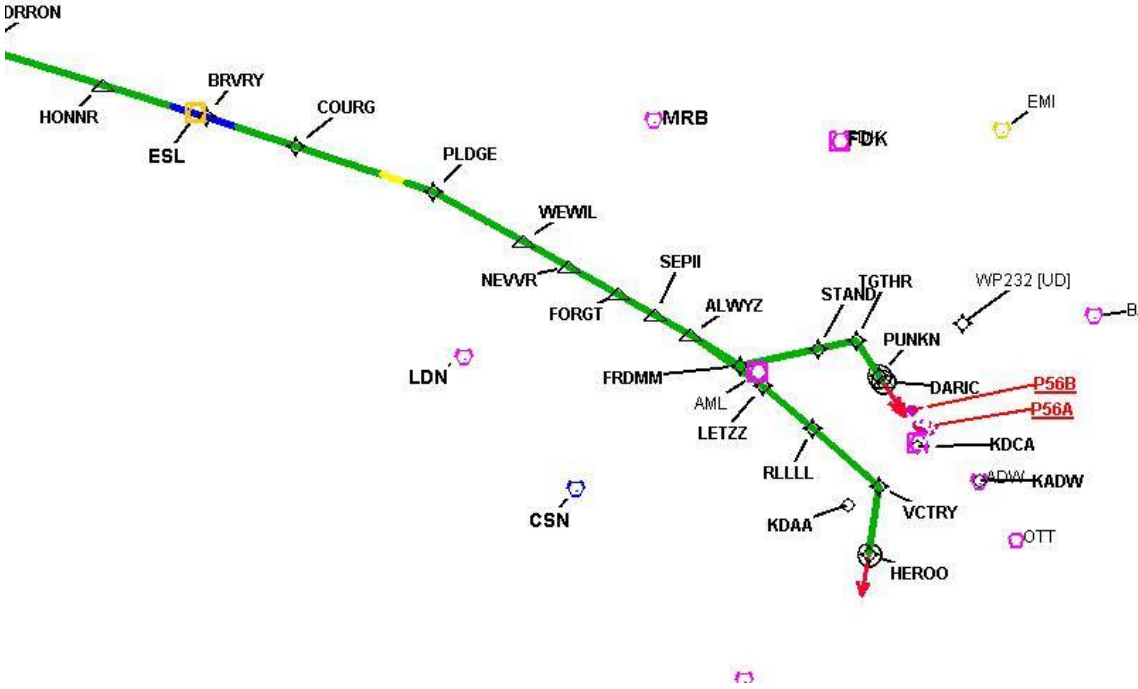
DME DME Assessment Results for FRDMM7 path TGTHR\_PUNKN

Graphic Depiction 2



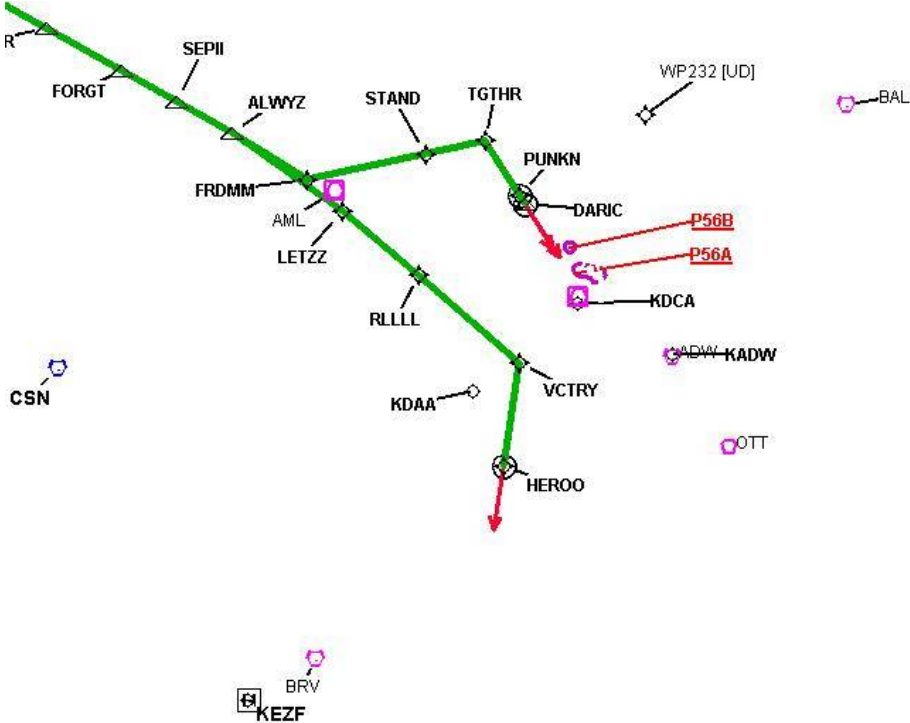
DME DME Assessment Results for FRDMM7 path TGTHR\_PUNKN

Graphic Depiction 3



DME DME Assessment Results for FRDMM7 path TGTHR\_PUNKN

Graphic Depiction 4



## DME DME Assessment Results for TRUPS6 path TRUPS\_HEROO

### Results Summary

Flyability:	Completed
DME/DME:	Completed - No Critical DMEs
Name:	David C-CTR Cook
Project File:	C:\Users\David C-CTR Cook\Documents\TARGETS WORK\DME-DME WORK\7-9-2026 PUBLICATION\FRDMM - TRUPS FOR JACOB\FRDMM7\ALL AIRPORTS\KDCA FRDMM7 ALL AIRPORTS DME-DME 20260225.tgs
Output File:	C:\Users\David C-CTR Cook\Documents\TARGETS WORK\DME-DME WORK\7-9-2026 PUBLICATION\FRDMM - TRUPS FOR JACOB\TRUPS6\02252026 FILES\ALL AIRPORTS\KDCA [IFPA] TRUPS6 20260225_1358 EST\TRUPS_HEROO\KDCA TRUPS6 RNAV STAR TRUPS HEROO 20260225_1358 EST.pdf
Procedure Name:	TRUPS6
Software: DmeDmePlugin:	7.6.0
Date/Time:	02/25/2026 13:58 EST
Databases:	MITRE 3DEP 3 arcsec

### Failures

No Failures

### Warnings

No Warnings

### Informational

No Informational

### Notes For Flight Check

None

### Flight Plan

Name	Type	Lat/Lon	Altitude (ft)	VNAV Mode	Ground Speed (kts)	Turn Type	Leg Type
TRUPS	WP	N38° 49' 15.6400", W077° 42' 01.9600"	6000	VNAV	250	FLY_BY	TF
LETZZ	WP	N38° 54' 42.3600", W077° 27' 02.4000"	6000	VNAV	250	FLY_BY	TF
RLLLL	WP	N38° 50' 55.1100", W077° 18' 20.2300"	6000	VNAV	250	FLY_BY	TF
VCTRY	WP	N38° 45' 43.6300", W077° 06' 49.2800"	6000	VNAV	200	FLY_BY	TF
HEROO	WP	N38° 37' 37.4200", W077° 06' 22.2700"	1500	VNAV	200	FLY_OVER	TF

### Flyability

Flight Type:	RNAV_STAR
Selected Airport:	KDCA [IFPA]
Climb Gradient:	None assigned
Speeds:	200 Ground Speed to 11000 FT
	240 Ground Speed to 18000 FT
	260 Ground Speed to 24000 FT
	340 Ground Speed above 24000 FT
Descent During a Turn:	Allowed
VNAV Mode:	Flight Plan

## DME DME Assessment Results for TRUPS6 path TRUPS\_HEROO

DME/DME	
RNP:	RNP 2
Flight Mode:	Manual
Line of Sight (DTED Level 0 Max):	Evaluated
Inertial Drift:	Enabled
Initial Drift:	0.558 NM
INS Drift Rate:	8.0 NM/Hour
Range Mode:	OSV
RNP Edges:	Evaluated
Min DME Range:	3.0 NM
DME Types:	DME, VOR-DME, VORTAC, TACAN
DME Include Angles:	30 to 150
Critical DMEs:	Allowed
DoD Facilities:	Not included
Foreign Facilities:	Not included
High DMEs:	Included
Low DMEs:	Included
Terminal DMEs:	Included
Flight Check DMEs:	Not selected
Higher Altitudes:	Not Evaluated
Near Maximum Altitude:	Not Evaluated
Automatic ESVs:	Not enabled
Disabled DMEs:	None

DME/DME (Continued)										
DMEs Used										
#	Name	Lat/Lon	MAGVAR	Range	Type	Source	Critical	Status	Time	Distance
1	AML	N38° 56' 04.5329", W077° 28' 00.1263"	8.0 W	40	L		NO	Enabled	87.6 %	86.9 %
2	DCA	N38° 51' 34.0300", W077° 02' 11.1700"	9.0 W	40	L		NO	Enabled	98.2 %	98.1 %
3	ADW	N38° 48' 25.9900", W076° 51' 58.5200"	10.0 W	40	L		NO	Enabled	29.9 %	31.4 %
4	BRV	N38° 20' 10.5264", W077° 21' 10.3159"	9.0 W	40	L		NO	Enabled	100 %	100 %
5	LDN	N38° 51' 15.8344", W078° 12' 20.0559"	6.0 W	40	L		NO	Enabled	38 %	39.9 %
6	MRB	N39° 23' 08.0600", W077° 50' 54.0820"	7.0 W	40	L		NO	Enabled	42.7 %	44.9 %
7	FDK	N39° 24' 44.0499", W077° 22' 30.4179"	8.0 W	40	L		NO	Enabled	56.8 %	59.6 %
8	BAL	N39° 10' 15.8283", W076° 39' 40.5225"	11.0 W	40	L		NO	Enabled	48.9 %	47.3 %
9	OTT	N38° 42' 21.1352", W076° 44' 41.0854"	10.0 W	40	L		NO	Enabled	68.8 %	68.6 %
10	CSN	N38° 38' 28.3277", W077° 51' 55.7979"	6.0 W	130	H		NO	Enabled	100 %	100 %

Flight Check DME Selection						
Distance [NM]	Selected DMEs					Alternate
0.0	BRV	AML	MRB	DCA	LDN	CSN
10.0	FDK	ADW	DCA	BRV	LDN	MRB
15.7	MRB	CSN	FDK	DCA	ADW	BRV
17.7	BRV	DCA	FDK	ADW	OTT	AML
18.8	BRV	DCA	FDK	OTT	AML	CSN
25.5	BRV	OTT	AML	BAL	CSN	DCA
30.4	AML	BAL	BRV	OTT	CSN	
37.1	AML	BAL	BRV	DCA	CSN	
37.7	BRV	AML	DCA	CSN		

**DME DME Assessment Results for TRUPS6 path TRUPS\_HEROO**

<b>Inertial Drift Segments</b>			
#	Start Location	End Location	Length [NM]

<b>Available DMEs by Waypoints</b>			
Waypoint Before	Waypoint After	DME List	Suggested DMEs
TRUPS	LETZZ	AML, DCA, ADW, BRV, LDN, MRB, FDK, OTT, CSN	
LETZZ	RLLLL	AML, DCA, ADW, BRV, LDN, FDK, MRB, BAL, OTT, CSN	
RLLLL	VCTRY	AML, DCA, BRV, FDK, BAL, OTT, CSN	
VCTRY	HEROO	AML, DCA, BRV, BAL, OTT, CSN	

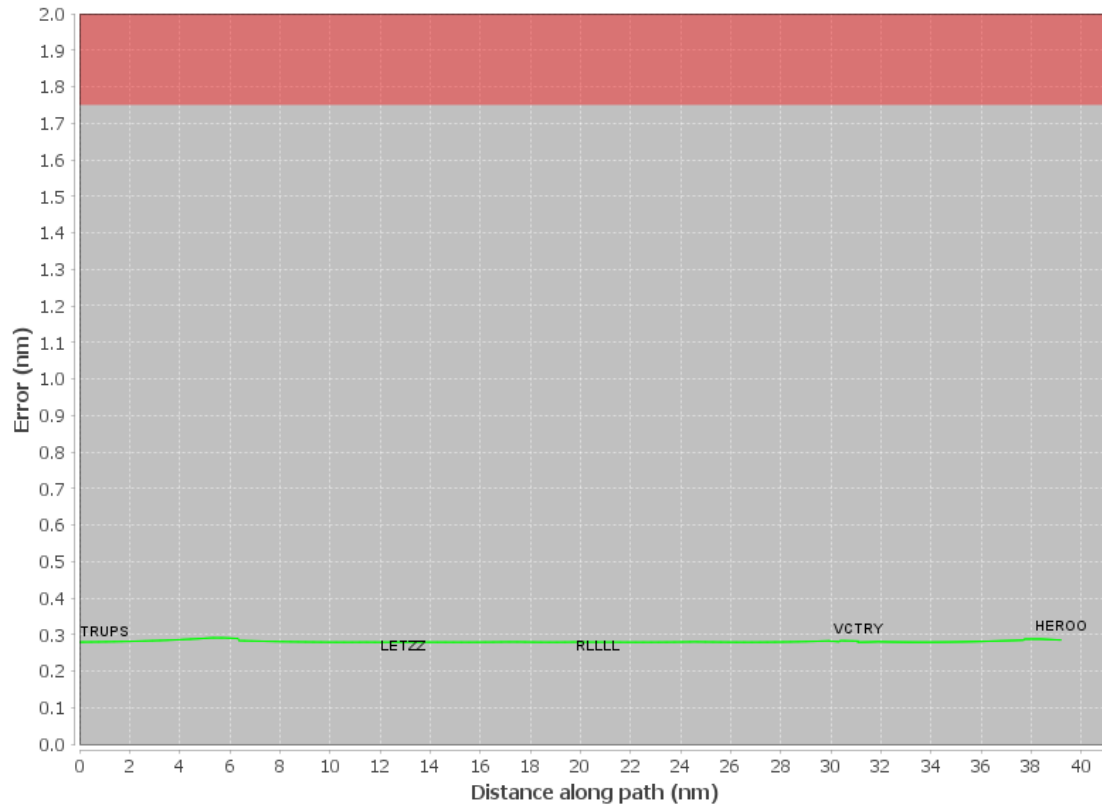
<b>User Data Files</b>								
#	File Name							
	None							

<b>User DMEs</b>								
#	Name	Lat/Lon	MAGVAR	Range	Elevation [ft]	Frequency	Replaces	Status
	None							

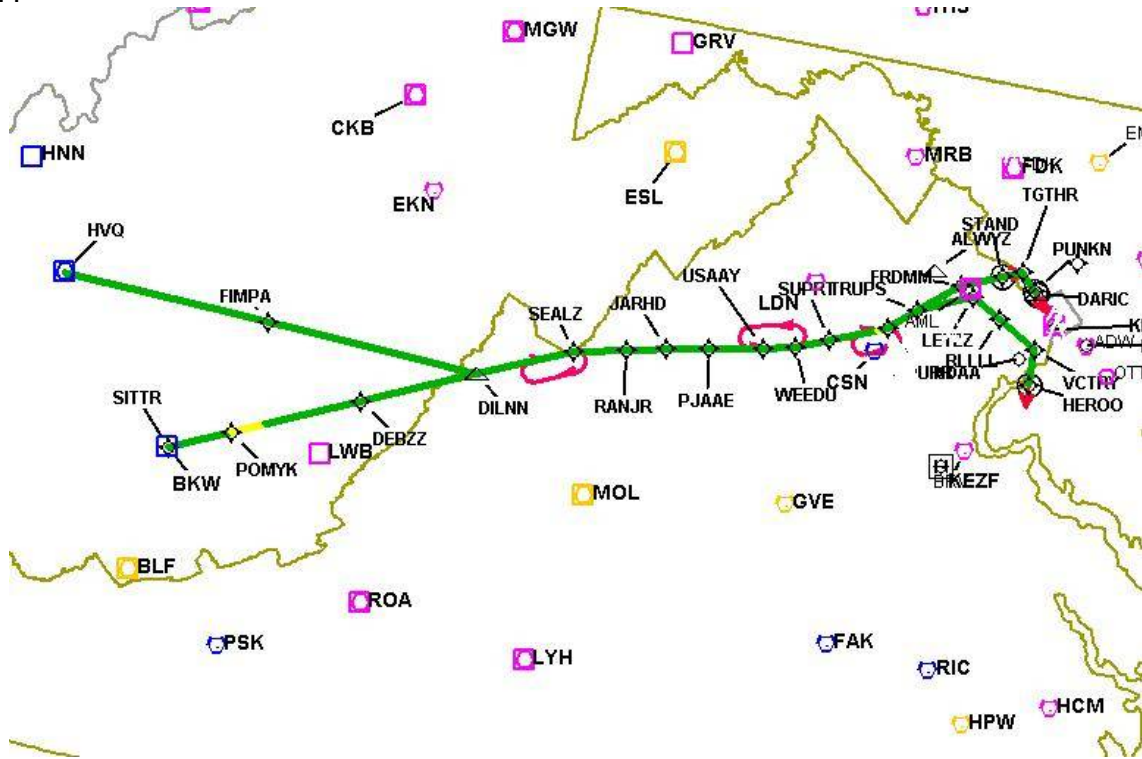
# DME DME Assessment Results for TRUPS6 path TRUPS\_HEROO

## DME Error



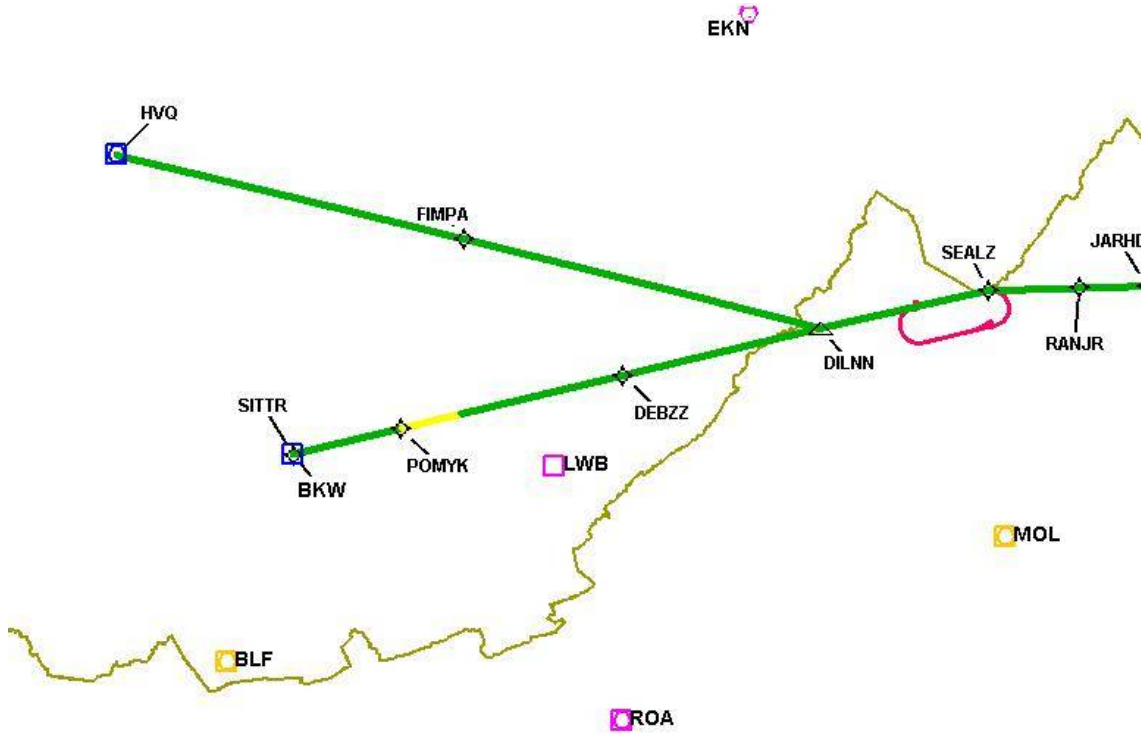
# DME DME Assessment Results for TRUPS6 path TRUPS\_HEROO

Graphic Depiction 1



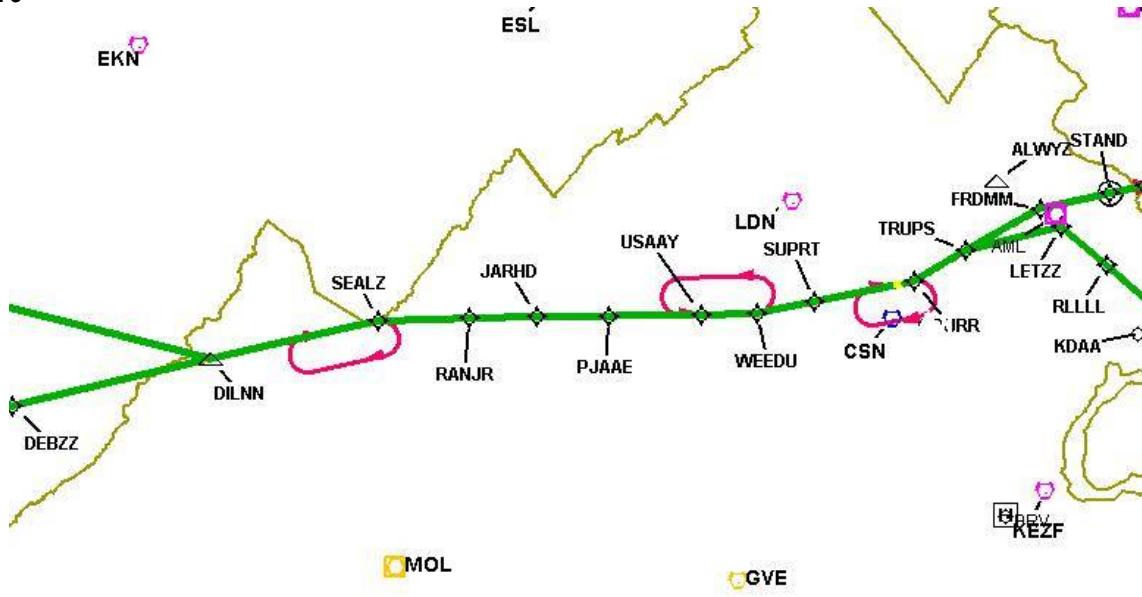
# DME DME Assessment Results for TRUPS6 path TRUPS\_HEROO

Graphic Depiction 2



# DME DME Assessment Results for TRUPS6 path TRUPS\_HEROO

Graphic Depiction 3



ROA

# DME DME Assessment Results for TRUPS6 path TRUPS\_HEROO

Graphic Depiction 4

