

WAAS CH XXXX XXX	APP CRS <b>005°</b>	Rwy Idg <b>6500</b> TDZE <b>47</b> APT Elev <b>66</b>
------------------------	------------------------	---

# RNAV (GPS) RWY 36

ST PAUL ISLAND (PASN)

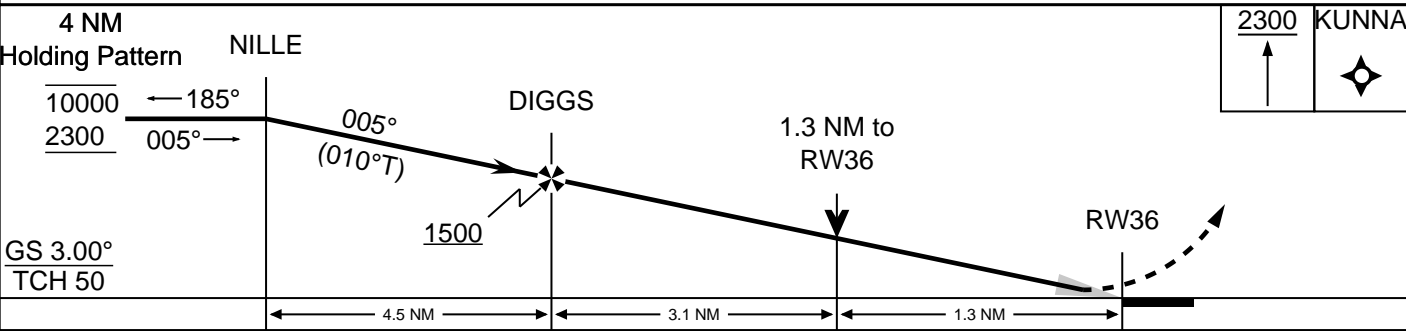
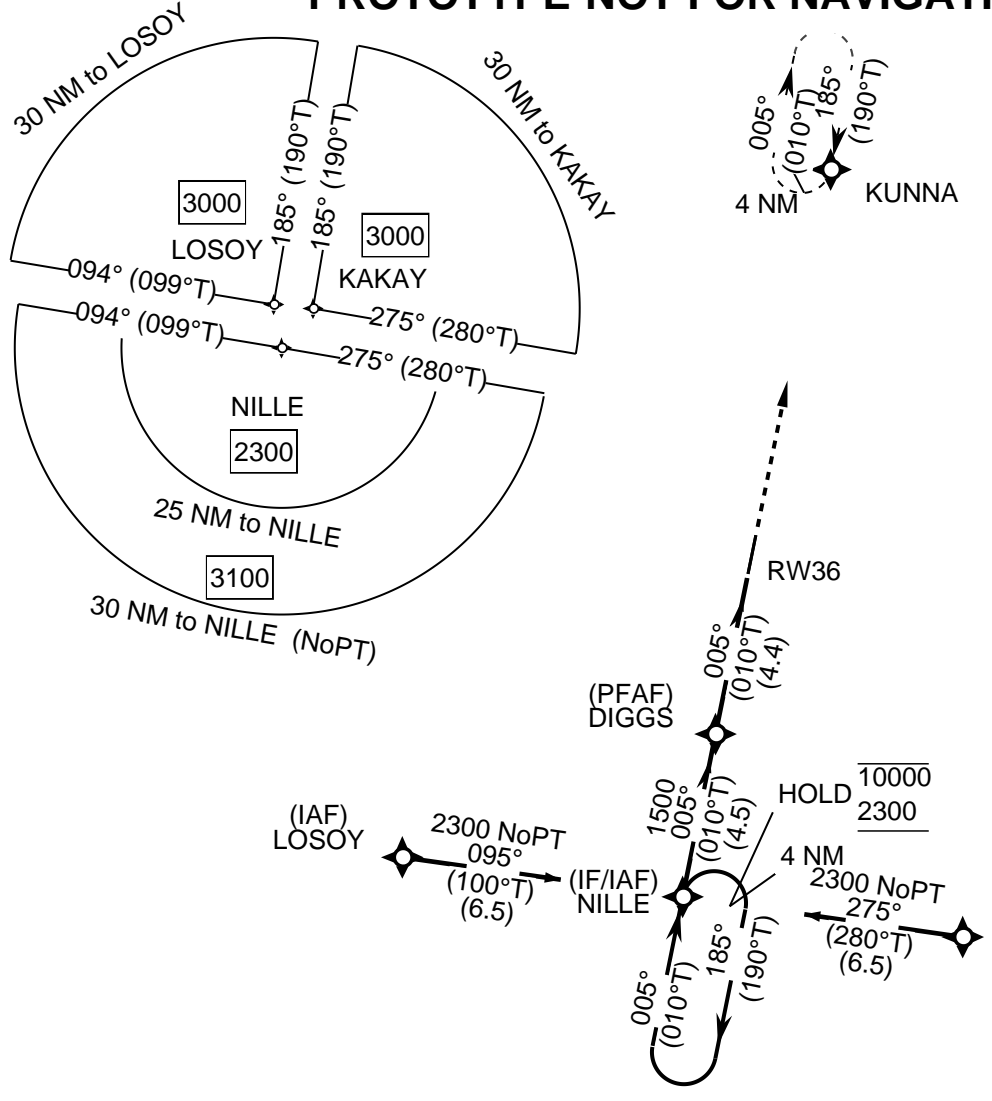
FOR UNCOMPENSATED BARO-VNAV SYSTEMS, LNAV/VNAV NA BELOW -13°C OR ABOVE 54°C. INOPERATIVE TABLE DOES NOT APPLY TO LPV, LNAV/VNAV AND LNAV CAT A AND B.  
CIRCLING NA WEST OF RWY 18-36.  
FOR INOPERATIVE ALS, INCREASE LNAV CATS C/D VISIBILITY TO 1 3/8 SM.

MALSF

MISSED APPROACH:  
CLIMB TO 2300 DIRECT KUNNA AND HOLD, CONTINUE CLIMB-IN-HOLD TO 2300.

ASOS <b>135.75</b>	ANCHORAGE CENTER <b>119.1 339.8</b>	CTAF <b>122.3 0</b>
-----------------------	--	------------------------

## PROTOTYPE-NOT FOR NAVIGATION



CATEGORY	A	B	C	D
LPV	247-3/4 200			
LNAV/VNAV	392-3/4 345			
LNAV	500-3/4 453			
CIRCLING	780-1 714		780-2 714	
	780-1 714		780-2 1/4 714	