

Flight Procedures Cover Page	Task Action: P-NOTAM	Task Type: IAP	Estimated Chart Date: 09/09/2021	APWS Task ID: E8628E9680BA44119E54B2498C087757	APWS Project ID: FE9144A3351748E9B858CD8FD08FCC7F
Procedure: RNAV (GPS) RWY 23R AMDT 0D		Enroute: NO	Specialist: Lafferty, James		Agreement Number:
Airport ID: KLCK			Airport City: COLUMBUS		State: OH
Facility ID:	Facility Type:	Flight Inspection Remark Type:			

Procedure Comments:

P-NOTAM

This Cancels FDC 0/9475

Order 8260.3, chapter 2, New Circling Criteria Applied

Contact Dave Teffeteller at 202-267-5177



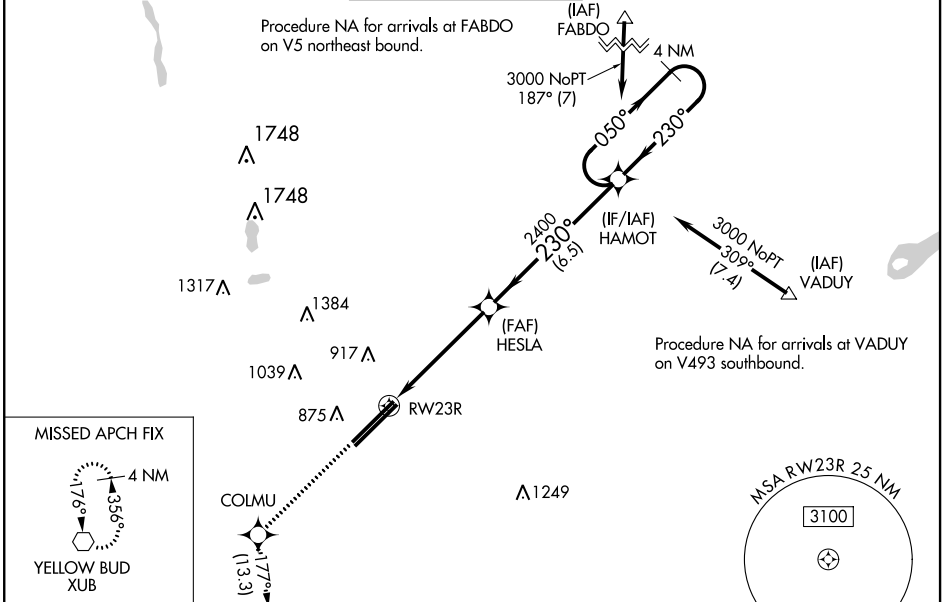
WAAS CH <b>78421</b> <b>W23B</b>	APP CRS <b>230°</b>	Rwy Idg TDZE Apt Elev	<b>10913</b> <b>743</b> <b>744</b>
--	------------------------	-----------------------------	--

## RNAV (GPS) RWY 23R

RICKENBACKER INTL (LCK)

RNP APCH.	<p><b>⚠</b> Baro-VNAV NA when using John Glenn Columbus Intl altimeter setting. For uncompensated Baro-VNAV systems, LNAV/VNAV NA below -1.6°C or above 54°C. Circling NA northwest of Rwy 5L-23R. VDP NA with John Glenn Columbus Intl altimeter setting. When local altimeter setting not received, use John Glenn Columbus Intl altimeter setting and increase all DA 36 feet and all MDA 40 feet. Increase LNAV/VNAV visibility 1/8 mile all Cats.</p>	<p><b>MISSED APPROACH:</b> Climb to 3000 direct COLMU and on track 177° to XUB VOR and hold.</p>
-----------	--	--

ATIS <b>132.75</b>	COLUMBUS APP CON <b>134.0 279.6</b>	RICK TOWER <b>120.05 348.4</b>	GND CON <b>125.275 275.8</b>	CLNC DEL <b>125.275 275.8</b>
-----------------------	--	-----------------------------------	---------------------------------	----------------------------------



ELEV <b>744</b>	<b>D</b>	TDZE <b>743</b>
-----------------	----------	-----------------

3000	COLMU	XUB	VGSI and RNAV glidepath not coincident (VGSI Angle 3.00/TCH 79).	
↑	✦	tr 177°	4 NM Holding Pattern	
* LNAV only.			HESLA	050° → 3000
* 1.3 NM to RW23R			2400	← 230°
RW23R			2400	GP 3.00° TCH 55
1.3			3.7 NM	6.5 NM
230° to RW23R	102	102		
TWR 852	11902 X 150	12102 X 200		
<p>TDZ/CL Rwy 5R REIL Rwy 23R HIRL Rwys 5L-23R and 5R-23L</p>				
CATEGORY	A	B	C	D
LPV DA		943-3/4	200 (200-3/4)	
LNAV/VNAV DA		1006-7/8	263 (300-7/8)	
LNAV MDA	1220-1	477 (500-1)	1220-1 3/8	477 (500-1 3/8)
CIRCLING	1220-1	476 (500-1)	1220-1 1/2	1300-2
			476 (500-1 1/2)	556 (600-2)

EC-2, 18 JUN 2020 to 16 JUL 2020

EC-2, 18 JUN 2020 to 16 JUL 2020



KLCK  
Rickenbacker Intl  
Columbus, OH  
1:100k  
Circling  
RNAV GPS RWY 23R

