

Flight Procedures Cover Page	Task Action: P-NOTAM	Task Type: IAP	Estimated Chart Date: 05/14/2026	APWS Task ID: 8E8A5AE8B41E4022A663C15783509F66	APWS Project ID: 024D9ABEBF344824BF102C270CE798A0
Procedure: ILS OR LOC RWY 12 AMDT 10C		Enroute: NO	Specialist: Burchell, Brandon		Agreement Number:
Airport ID: KALO			Airport City: WATERLOO		State: IA
Facility ID: ALO	Facility Type: VOR_DME	Flight Inspection Remark Type:			

Procedure Comments:

Clear T-NOTAM 5/6947. MSA FROM ALO VOR/DME BEARING 180 CW 360 2800.

PROCESSED IAW TECHNICAL SUPPORT GROUP (AJF-17) MEMO DATED 07/07/2021 GUIDANCE FOR PROCEDURAL CHANGES REQUIRING FLIGHT INSPECTION/VALIDATION.

POC: KYLE THOMPSON, AJV A33, 405-954-2135.

QUALITY
9
CHECKED
BEGUE

QUALITY
39
CHECKED

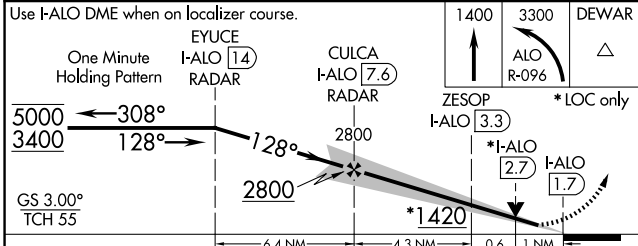
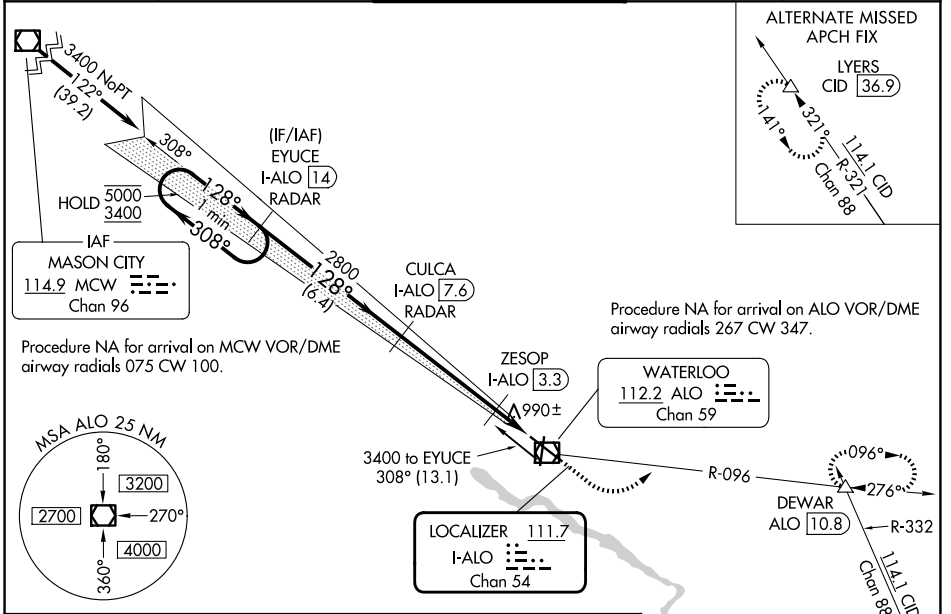
LOC/DME I-ALO 111.7 Chan 54	APP CRS 128°	Rwy Ldg 8399 TDZE 873 Apt Elev 873
---	------------------------	---

old

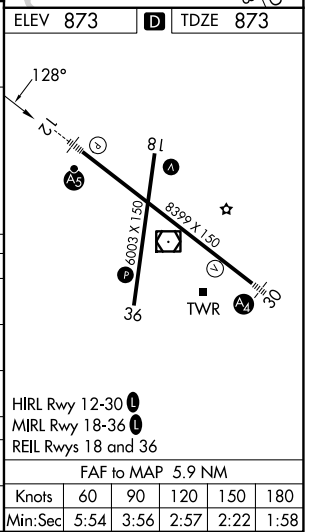
ILS or LOC RWY 12
WATERLOO RGNL (A.L.O)

DME or RADAR required.	MALS/R	MISSED APPROACH: Climb to 1400 then climbing left turn to 3300 on ALO VOR/DME R-096 to DEWAR INT/ALO VOR/DME 10.8 DME and hold.
For inop ALS, increase S-LOC 12 ZESOP FIX MINIMUMS Cats C/D visibility to RVR 5500. #RVR 1800 authorized with the use of FD or AP or HUD to DA.		

ATIS 120.65	DES MOINES APP CON * 118.9 251.15	WATERLOO TOWER * 125.075 (CTAF) 257.8	GND CON 121.9 269.1	UNICOM 122.95
-----------------------	---	---	-------------------------------	-------------------------



CATEGORY	A	B	C	D
S-ILS 12#	1073/24 200 (200-½)			
S-LOC 12	1420/24	547 (600-½)	1420/60	547 (600-1¼)
CIRCLING	1420-1	547 (600-1)	1480-1¾ 607 (700-1¾)	1600-2¼ 727 (800-2¼)
ZESOP FIX MINIMUMS (DME REQUIRED)				
S-LOC 12	1240/24	367 (400-½)	1240/35	367 (400-¾)
CIRCLING	1360-1 487 (500-1)	1400-1 527 (600-1)	1480-1¾ 607 (700-1¾)	1600-2¼ 727 (800-2¼)



NC-3, 02 OCT 2025 to 30 OCT 2025

NC-3, 02 OCT 2025 to 30 OCT 2025