

# RNAV (GPS) RWY 36

SALLISAW MUNI (JSV)

APP CRS <b>359°</b>	Rwy Ldg TDZE Apt Elev	<b>4006</b> <b>523</b> <b>527</b>
------------------------	-----------------------------	---

RNP APCH - GPS.

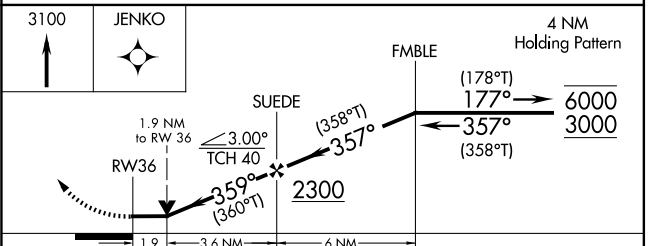
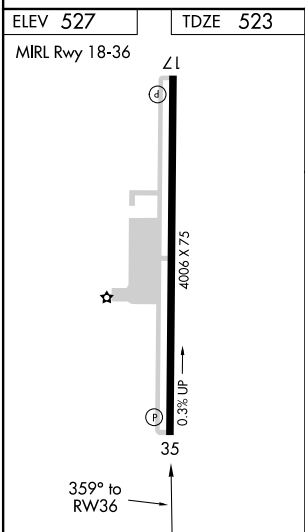
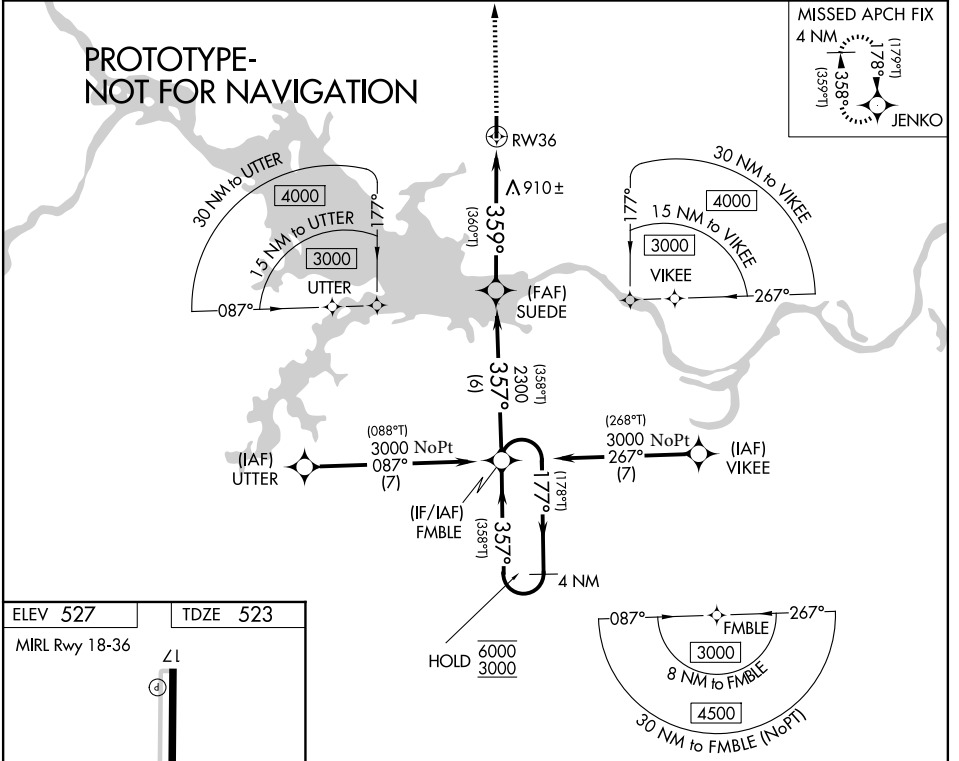
**⚠** Circling Rwy 18 NA at night. Rwy 36 helicopter visibility reduction below 3/4 SM NA. When local altimeter setting not received, use GZL altimeter setting and increase all MDAs 60 feet, and LNAV and Circling visibility Cat C 1/4 SM. VDP NA when using GZL altimeter setting.

MISSED APPROACH: Climb to 3100 direct JENKO and hold.

AWOS-3  
**118.475**

RAZORBACK APP CON \*  
**120.9 343.75**

UNICOM  
**122.7** (CTAF)



CATEGORY	A	B	C	D
LNAV MDA	1160-1	637 (700-1)	1160-1 3/4 637 (700-1 3/4)	NA
CIRCLING	1160-1	633 (700-1)	1300-2 1/4 773 (800-2 1/4)	NA