

Flight Procedures Cover Page	Task Action: Cancellation	Task Type: IAP	Estimated Chart Date: 05/14/2026	APWS Task ID: 8F55945D83C7401B99E5CCFC8BAD2F39	APWS Project ID: 0E24F737755045BEA8F7B516FB17A39A
Procedure: VOR RWY 24 AMDT 13G		Enroute: NO	Specialist: Ferreira, Giorgia		Agreement Number:
Airport ID: KARB			Airport City: ANN ARBOR		State: MI
Facility ID: SVM	Facility Type: VORTAC	Flight Inspection Remark Type:			

Procedure Comments:
POC: ROBERT HAMILTON AJV-A433 405-954-4608.



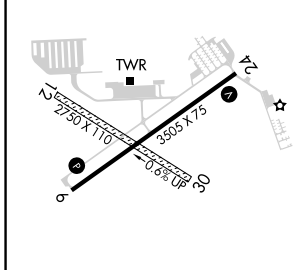
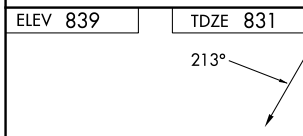
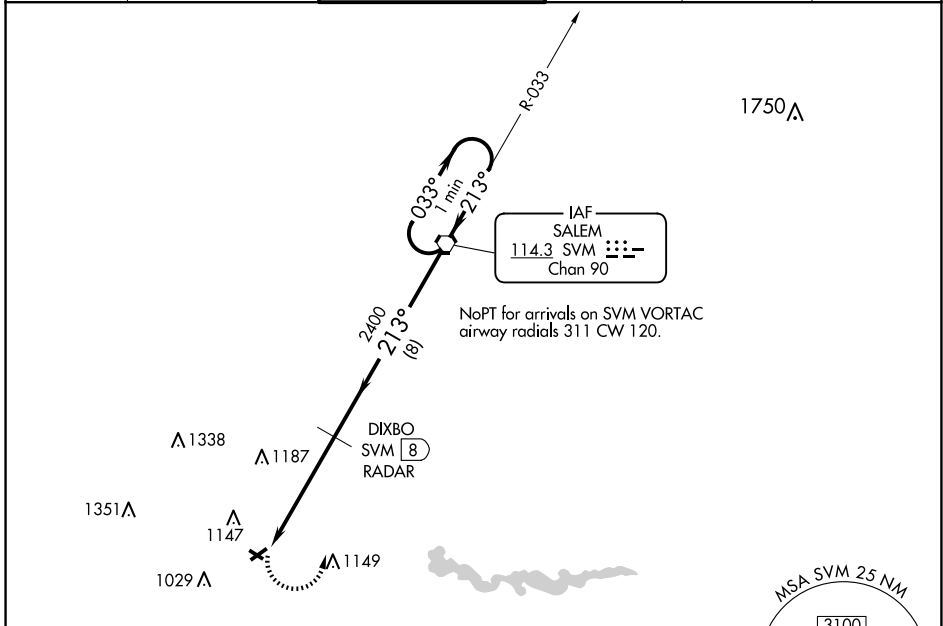
VORTAC SVM 114.3 Chan 90	APP CRS 213°	Rwy Idg TDZE Apt Elev	3505 831 839
--	------------------------	-----------------------------	---

VOR RWY 24
ANN ARBOR MUNI (ARB)

⚠ Inop table does not apply. Rwy 24 helicopter visibility reduction below 3/4 SM NA.
 ⚠ When local altimeter setting not received, use Willow Run altimeter setting and increase all MDAs 40 feet and increase visibility S-24 Cat C/D visibility 1/8 SM and Circling Cat C/D visibility 1/4 SM. Circling NA to Rwys 12 and 30.

MISSED APPROACH: Climbing left turn to 3000 direct SVM VORTAC and hold.

ATIS 134.55	DETROIT APP CON 118.95 284.0	ANN ARBOR TOWER * 120.3 (CTAF) 0	GND CON 121.6	CLNC DEL 121.6	UNICOM 123.0
-----------------------	--	--	-------------------------	--------------------------	------------------------

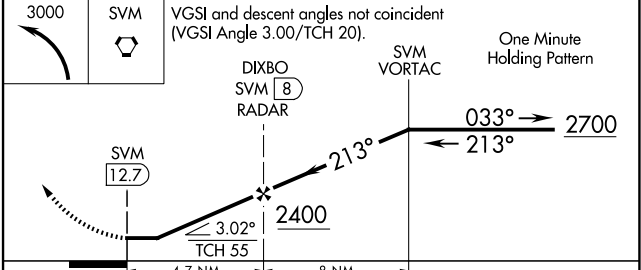


MIRL Rwy 6-24 0
REIL Rwy 6 0

FAF to MAP 4.7 NM

Knots	60	90	120	150	180
Min:Sec	4:42	3:08	2:21	1:53	1:34

DME or RADAR REQUIRED



CATEGORY	A	B	C	D
S-24	1460-1	629 (700-1)	1460-1 3/4 629 (700-1 3/4)	1460-1 3/4 629 (700-1 3/4)
CIRCLING	1500-1	661 (700-1)	1500-1 3/4 661 (700-1 3/4)	1640-2 1/2 801 (900-2 1/2)

EC-1, 27 NOV 2025 to 25 DEC 2025

EC-1, 27 NOV 2025 to 25 DEC 2025