

FEDERAL AVIATION ADMINISTRATION
FLIGHT STANDARDS SERVICE
STANDARD TERMINAL ARRIVAL (STAR)

Bearings, headings, courses, tracks and radials are magnetic. Elevations and altitudes are in feet, MSL. Altitudes are minimum altitudes unless otherwise indicated.
Ceilings are in feet above airport elevation. Distances are in nautical miles. Visibilities are in statute miles or feet RVR unless otherwise indicated.

Arrival Name GESNR (RNAV)	Number TWO	STAR Computer Code ZEEKK.GESNR2	Superseded Number ONE	Dated 06/25/2015	Effective Date				
TRANSITION ROUTES:									
Transition Name	Transition Computer Codes	From FIX/NAVAID	To FIX/NAVAID	Course	Distance	MEA	MOCA	MAA	Crossing Altitudes / Fixes
ALEXANDRIA	AEX.GESNR2	AEX VORTAC	AEX VORTAC						
			EMGEE	244.85	74.05	8000	1900		AT/ABOVE FL240
			SCHEX	244.20	18.00	8000	1900		BETWEEN FL220 AND FL270
			ZEEKK	244.04	20.00	8000	1900		BETWEEN 17000 AND FL200
CARPR	CARPR.GESNR2	CARPR	CARPR						
			MURFF	209.01	17.98	8000	1900		BETWEEN FL220 AND FL270
			ZEEKK	208.95	20.02	8000	1900		BETWEEN 17000 AND FL200
PLANB	PLANB.GESNR2	PLANB	PLANB						
			CARPR	209.22	37.13	8000	1900		
			MURFF	209.01	17.98	8000	1900		BETWEEN FL220 AND FL270
			ZEEKK	208.95	20.02	8000	1900		BETWEEN 17000 AND FL200
SWEUP	SWEUP.GESNR2	SWEUP	SWEUP						
			DLAKE	224.99	88.95	8000	2000		AT/ABOVE FL240
			DOOTL	224.31	18.45	8000	2000		BETWEEN FL220 AND FL270
			ZEEKK	224.23	20.01	8000	1900		BETWEEN 17000 AND FL200

ARRIVAL ROUTE DESCRIPTION:

FROM ZEEKK ON TRACK 228.83/12.93 TO CROSS GESNR BETWEEN 13000 AND 16000 AND AT 280 KIAS.

LANDING RWY 8L: FROM GESNR ON TRACK 225.94/10.55 TO CROSS KENNN BETWEEN 10000 AND 11000 AND AT 250 KIAS, THEN ON TRACK 227.30/14.95 TO CROSS KNGWD BETWEEN 8000 AND 10000 AND AT 240 KIAS, THEN ON TRACK 256.73/11.43 TO CROSS ZOEED AT 7000 AND AT 240 KIAS, THEN ON TRACK 267.12/9.07 TO CROSS CASST AT 6000 AND AT 210 KIAS, THEN ON TRACK 267.12. EXPECT RADAR VECTORS TO FINAL APPROACH COURSE.

LANDING RWY 8R: FROM GESNR ON TRACK 225.94/10.55 TO CROSS KENNN BETWEEN 10000 AND 11000 AND AT 250 KIAS, THEN ON TRACK 227.30/14.95 TO CROSS KNGWD BETWEEN 8000 AND 10000 AND AT 240 KIAS, THEN ON TRACK 224.87/6.00 TO CROSS EDEED AT OR BELOW 8000, THEN ON TRACK 225.00/10.41 TO CROSS REAPR AT 6000, THEN ON TRACK 224.98/4.54 TO CROSS SHIVV AT 6000 AND AT 240 KIAS, THEN ON TRACK 267.18/4.82 TO CROSS HOWLN AT 6000 AND AT 210 KIAS, THEN ON TRACK 267.18. EXPECT RADAR VECTORS TO FINAL APPROACH COURSE.

LANDING RWY 9: FROM GESNR ON TRACK 225.94/10.55 TO CROSS KENNN BETWEEN 10000 AND 11000 AND AT 250 KIAS, THEN ON TRACK 227.30/14.95 TO CROSS KNGWD BETWEEN 8000 AND 10000 AND AT 240 KIAS, THEN ON TRACK 224.87/6.00 TO CROSS EDEED AT OR BELOW 8000, THEN ON TRACK 225.00/10.41 TO CROSS REAPR AT 6000, THEN ON TRACK 224.98/4.54 TO CROSS SHIVV AT 6000 AND AT 240 KIAS, THEN ON TRACK 267.18/4.82 TO CROSS HOWLN AT 6000 AND AT 210 KIAS, THEN ON TRACK 267.18. EXPECT RADAR VECTORS TO FINAL APPROACH COURSE.

PBN REQUIREMENT NOTES:

RNAV 1 - DME/DME/IRU OR GPS

EQUIPMENT REQUIREMENT NOTES:

RADAR REQUIRED

FEDERAL AVIATION ADMINISTRATION
FLIGHT STANDARDS SERVICE
STANDARD TERMINAL ARRIVAL (STAR)

Bearings, headings, courses, tracks and radials are magnetic. Elevations and altitudes are in feet, MSL. Altitudes are minimum altitudes unless otherwise indicated.
Ceilings are in feet above airport elevation. Distances are in nautical miles. Visibilities are in statute miles or feet RVR unless otherwise indicated.

Arrival Name	Number	STAR Computer Code	Superseded Number	Dated	Effective Date
GESNR (RNAV)	TWO	ZEEKK.GESNR2	ONE	06/25/2015	

PROCEDURAL DATA NOTES:

NOTE: JET AND TURBOPROP AIRCRAFT ONLY

NOTE: FLY THE RUNWAY 08L TRANSITION; HOUSTON APPROACH CONTROL MAY ASSIGN A DIFFERENT TRANSITION ON INITIAL CONTACT.

NOTE: CORRESPONDING RNAV STAR IS ZEEKK. EXPECT ZEEKK WHEN IAH IS LANDING WEST.

NOTE: EXCEPT FOR AIRCRAFT DEPARTING SHV, PLANB TRANSITION, ATC ASSIGNED ONLY.

NOTE: CARPR TRANSITION, ATC ASSIGNED ONLY.

NOTE: JET AIRCRAFT DESCEND VIA MACH NUMBER UNTIL 280 KIAS. IF UNABLE, ADVISE ATC.

FIXES AND/OR HOLDING PATTERNS:

CHART HOLDING AT DLAKE: HOLD NE, LT, 224.99 INBOUND, 16 NM LEGS.

CHART HOLDING AT EMGEE: HOLD NE, RT, 244.85 INBOUND, 16 NM LEGS.

CHART HOLDING AT ZEEKK: HOLD NE, RT, 224.23 INBOUND, 10 NM LEGS.

COMMUNICATIONS:

AIRPORTS SERVED:

<u>AIRPORT ID</u>	<u>CITY</u>	<u>STATE</u>
IAH	HOUSTON	TX

LOST COMMUNICATIONS PREFERENCES:

REMARKS:

MEAS ALTITUDES PER DME/DME/IRU EVALUTATION.

ADDITIONAL FLIGHT DATA:

DME/DME ASSESSMENT: SAT (RNP 2.0)

MAG VAR: IAH 03E/2015

CHART AT CASST TERMINUS: IAH LDG RWY 8L

CHART AT HOWLN TERMINUS: IAH LDG RWY 8R, 9

FEDERAL AVIATION ADMINISTRATION
FLIGHT STANDARDS SERVICE
STANDARD TERMINAL ARRIVAL (STAR)

Bearings, headings, courses, tracks and radials are magnetic. Elevations and altitudes are in feet, MSL. Altitudes are minimum altitudes unless otherwise indicated.
Ceilings are in feet above airport elevation. Distances are in nautical miles. Visibilities are in statute miles or feet RVR unless otherwise indicated.

Arrival Name GESNR (RNAV)	Number TWO	STAR Computer Code ZEEKK.GESNR2	Superseded Number ONE	Dated 06/25/2015	Effective Date
					<i>Digitally signed by</i> CASIMIR L TABAKA Feb 03, 2025
FLIGHT INSPECTED BY:	ORGANIZATION:	DATE:			
ANTHONY D VALLERA	AJF	01/31/2025	Flight Inspected Signature:		
			<i>Digitally signed by</i> CASIMIR L TABAKA Feb 03, 2025		
DEVELOPED BY:			Developed By Signature:		
CASIMIR TABAKA (BARBARA GORMAN)	AJV-A432	11/04/2024			
			<i>Digitally signed by</i> CASIMIR L TABAKA Feb 03, 2025		
APPROVED BY:			Approved By Signature:		
CASIMIR TABAKA	AJV-A430				
			<i>Digitally signed by</i> CASIMIR L TABAKA Feb 03, 2025		

CHANGES:

1. REMOVED SWB NAVAID FROM SAWMILL TRANSITION AND REPLACED WITH SWEUP WP; DISTANCE UPDATED FROM 88.96 TO 88.95.
2. UPDATED ARRIVAL ROUTE DESCRIPTIONS: CHANGED ALL "AT OR ABOVE" COUPLED WITH "AT OR BELOW" TO "BETWEEN."
3. REMOVED MEAS FROM ARRIVAL ROUTE DESCRIPTION.
4. MOVED PROCEDURAL DATA NOTES: RADAR REQUIRED TO EQUIPMENT REQUIREMENT NOTES.
5. MOVED AND COMBINED PROCEDURAL DATA NOTES: FROM RNAV 1, DME/DME/IRU OR GPS REQUIRED TO PBN REQUIREMENT NOTES.
6. CHANGED TURBOJET TO JET IN SPEED CAPABILITY NOTE.
7. UPDATED NOTE: EXCEPT FOR AIRCRAFT DEPARTING SHV, FROM "PLAN B TRANSITION IS ATC ASSIGNED ONLY; DO NOT FILE" TO "PLANB TRANSITION, ATC ASSIGNED ONLY."
8. UPDATED NOTE: FROM "CARPR TRANSITION DO NOT FILE - TO BE ASSIGNED BY ATC" TO "CARPR TRANSITION, ATC ASSIGNED ONLY."
9. UPDATED NOTE: FROM "TURBOJET AIRCRAFT DESCEND VIA MACH NUMBER UNTIL INTERCEPTING 280K. MAINTAIN 280K UNTIL SLOWED BY STAR" TO "JET AIRCRAFT DESCEND VIA MACH NUMBER UNTIL 280 KIAS. IF UNABLE, ADVISE ATC."
10. UPDATED HOLDING AT DLAKE FROM 20 NM LEGS TO 16 NM LEGS.
11. ADDED HOLDING AT EMGEE.
12. UPDATED MEAS AND MOCAS.
13. ADDED TERMINUS INFO TO ADDITIONAL FLIGHT DATA.
14. AIRPORTS SERVED: REMOVED AIRPORT NAMES; ADDED AIRPORT ID.
15. REMOVED CHART: HOUSTON APP CON.
16. ADDED REMARK: MEA ALTITUDES PER DME/DME/IRU EVALUATION.

REASONS:

1. SWB DECOMMISSIONED; SWEUP WP 60FT SOUTHWEST.
2. IAW 8260.19J 4-5-2 E.
3. NO LONGER A REQUIREMENT.
- 4/5. IAW 8260.19J 4-5-3.
6. IAW 8260.19J 4-5-12 D(3)A.
- 7/8. IAW 8260.19J 4-5-12 D(3).
9. IAW 8260.19J 4-5-2 F.
10. IAW 8260.3F TABLE 16-3-1
11. ATC REQUEST.
12. MEAS AMENDED TO LOWEST ALTITUDE THAT WILL PASS DME/DME SCREEN AND MOCAS UPDATED TO CURRENT REQUIREMENTS.

FEDERAL AVIATION ADMINISTRATION
FLIGHT STANDARDS SERVICE
STANDARD TERMINAL ARRIVAL (STAR)

Bearings, headings, courses, tracks and radials are magnetic. Elevations and altitudes are in feet, MSL. Altitudes are minimum altitudes unless otherwise indicated.
Ceilings are in feet above airport elevation. Distances are in nautical miles. Visibilities are in statute miles or feet RVR unless otherwise indicated.

Arrival Name	Number	STAR Computer Code	Superseded Number	Dated	Effective Date
GESNR (RNAV)	TWO	ZEEKK.GESNR2	ONE	06/25/2015	

13. 8260.19J 4-5-2 H(2).

14. PER 8260.19J DOCUMENTATION STANDARDS.

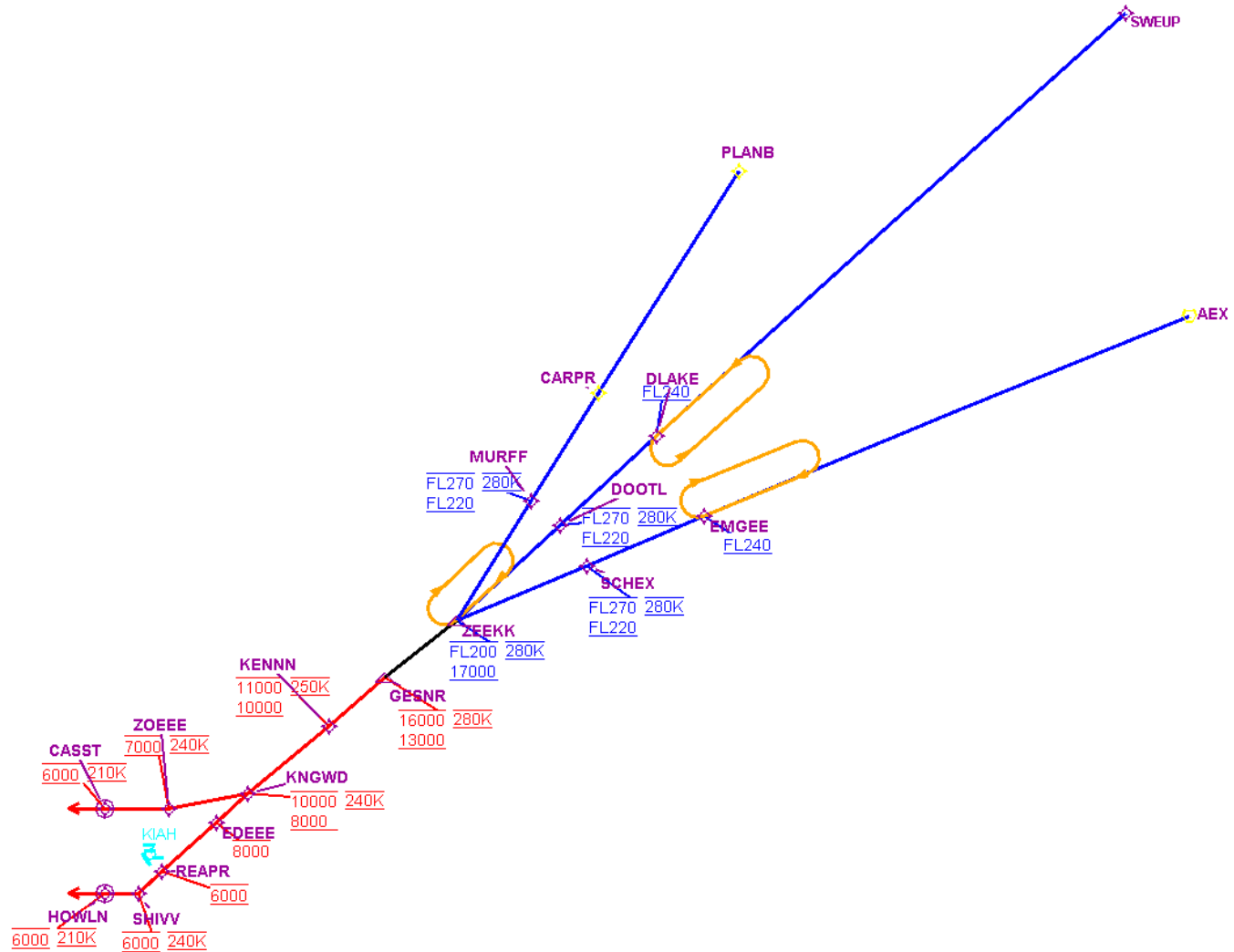
15. AUTOMATICALLY CHARTED IAW 8260.19J 4-5-12(F).

16. MEAS ARE HIGHER THAN MOCAS.

FEDERAL AVIATION ADMINISTRATION
FLIGHT STANDARDS SERVICE
STANDARD TERMINAL ARRIVAL (STAR)

Bearings, headings, courses, tracks and radials are magnetic. Elevations and altitudes are in feet, MSL. Altitudes are minimum altitudes unless otherwise indicated.
Ceilings are in feet above airport elevation. Distances are in nautical miles. Visibilities are in statute miles or feet RVR unless otherwise indicated.

Arrival Name	Number	STAR Computer Code	Superseded Number	Dated	Effective Date
GESNR (RNAV)	TWO	ZEEKK.GESNR2	ONE	06/25/2015	
Graphic Depiction 1					



**FEDERAL AVIATION ADMINISTRATION
FLIGHT STANDARDS SERVICE
STAR (DATA RECORD)**

Arrival Name GESNR (RNAV)	Number TWO		STAR Computer Code ZEEKK.GESNR2		Superseded Number ONE		Dated 06/25/2015		Effective Date
<u>FIX/NAVAID</u>	<u>LAT/LONG</u>	<u>C</u>	<u>FO/FB</u>	<u>LEG TYPE</u>	<u>TC</u>	<u>DIST (NM)</u>	<u>ALTITUDE</u>	<u>SPEED</u>	<u>REMARKS</u>
En Route Transition									
AEX VORTAC	311524.23N / 0923003.50W	Y		IF					AEX.GESNR2
EMGEE	304700.71N / 0934941.12W	Y	FB	TF	247.85	74.05	AT/ABOVE FL240		
SCHEX	303959.73N / 0940855.50W	Y	FB	TF	247.20	18.00	FL220BFL270	AT 280K	
ZEEKK	303208.86N / 0943014.89W	Y	FB	TF	247.04	20.00	17000BFL200	AT 280K	
En Route Transition									
CARPR	310428.34N / 0940654.83W	Y		IF					CARPR.GESNR2
MURFF	304910.97N / 0941758.94W	Y	FB	TF	212.01	17.98	FL220BFL270	AT 280K	
ZEEKK	303208.86N / 0943014.89W	Y	FB	TF	211.95	20.02	17000BFL200	AT 280K	
En Route Transition									
PLANB	313559.26N / 0934351.54W	Y		IF					PLANB.GESNR2
CARPR	310428.34N / 0940654.83W	Y	FB	TF	212.22	37.13			
MURFF	304910.97N / 0941758.94W	Y	FB	TF	212.01	17.98	FL220BFL270	AT 280K	
ZEEKK	303208.86N / 0943014.89W	Y	FB	TF	211.95	20.02	17000BFL200	AT 280K	
En Route Transition									
SWEUP	315823.07N / 0924038.00W	Y		IF					SWEUP.GESNR2
DLAKE	305820.09N / 0935730.12W	Y	FB	TF	227.99	88.95	AT/ABOVE FL240		
DOOTL	304547.04N / 0941314.39W	Y	FB	TF	227.31	18.45	FL220BFL270	AT 280K	
ZEEKK	303208.86N / 0943014.89W	Y	FB	TF	227.23	20.01	17000BFL200	AT 280K	
Common Route									
ZEEKK	303208.86N / 0943014.89W	Y		IF			17000BFL200	AT 280K	ZEEKK.GESNR2
GESNR	302407.78N / 0944200.06W	Y	FB	TF	231.83	12.93	13000B16000	AT 280K	
Runway Transition									
GESNR	302407.78N / 0944200.06W	Y		IF			13000B16000	AT 280K	
KENNN	301710.80N / 0945111.19W	Y	FB	TF	228.94	10.55	10000B11000	AT 250K	

FEDERAL AVIATION ADMINISTRATION
FLIGHT STANDARDS SERVICE
STAR (DATA RECORD)

Arrival Name GESNR (RNAV)		Number TWO		STAR Computer Code ZEEKK.GESNR2		Superseded Number ONE		Dated 06/25/2015	Effective Date
<u>FIX/NAVAID</u>	<u>LAT/LONG</u>	<u>C</u>	<u>FO/FB</u>	<u>LEG TYPE</u>	<u>TC</u>	<u>DIST (NM)</u>	<u>ALTITUDE</u>	<u>SPEED</u>	<u>REMARKS</u>
KNGWD	300735.81N / 0950426.99W	Y	FB	TF	230.30	14.95	8000B10000	AT 240K	
ZOEEE	300532.56N / 0951725.16W	Y	FB	TF	259.73	11.43	AT 7000	AT 240K	
CASST	300533.25N / 0952752.48W	Y	FO	TF	270.12	09.07	AT 6000	AT 210K	
KIAH:RWY 8L				FM	270.12				
Runway Transition									
GESNR	302407.78N / 0944200.06W	Y		IF			13000B16000	AT 280K	
KENNN	301710.80N / 0945111.19W	Y	FB	TF	228.94	10.55	10000B11000	AT 250K	
KNGWD	300735.81N / 0950426.99W	Y	FB	TF	230.30	14.95	8000B10000	AT 240K	
EDEEE	300333.64N / 0950934.66W	Y	FB	TF	227.87	06.00	AT/BELOW 8000		
REAPR	295634.37N / 0951828.99W	Y	FB	TF	228.00	10.41	AT 6000		
SHIVV	295331.44N / 0952221.90W	Y	FB	TF	227.98	04.54	AT 6000	AT 240K	
HOWLN	295332.21N / 0952754.90W	Y	FO	TF	270.18	04.82	AT 6000	AT 210K	
KIAH:RWY 8R				FM	270.18				
Runway Transition									
GESNR	302407.78N / 0944200.06W	Y		IF			13000B16000	AT 280K	
KENNN	301710.80N / 0945111.19W	Y	FB	TF	228.94	10.55	10000B11000	AT 250K	
KNGWD	300735.81N / 0950426.99W	Y	FB	TF	230.30	14.95	8000B10000	AT 240K	
EDEEE	300333.64N / 0950934.66W	Y	FB	TF	227.87	06.00	AT/BELOW 8000		
REAPR	295634.37N / 0951828.99W	Y	FB	TF	228.00	10.41	AT 6000		
SHIVV	295331.44N / 0952221.90W	Y	FB	TF	227.98	04.54	AT 6000	AT 240K	
HOWLN	295332.21N / 0952754.90W	Y	FO	TF	270.18	04.82	AT 6000	AT 210K	
KIAH:RWY 9				FM	270.18				