

(MQY) SMYRNA, SMYRNA, TENNESSEE, ILS OR LOC RWY 32, AMDT 7

6-16-22 PRB RESULT: RETURN FOR REWORK:

- MISSING DOCUMENTATION: SAT FLIGHT CHECK PC
[PROVIDED UPON RECEIPT OF SAT PC](#)
- UPDATED CATEX APPROVAL REQUEST:
[CATEX, DTD 5/23/22 PROVIDED IN AFS_A FILE](#)
- TWO SEPARATE APPROVAL REQUESTS ARE NEEDED:
[APPROVAL LETTER\(S\) PROVIDED IN AFS_A FILE](#)
 - GPA LESS THAN 3.0 - IAW 8260.3E, 2-6-3.
 - CURRENTLY DOES NOT SPECIFY THAT THE CRITERIA REFERENCE IS THE 8260.3E; IT SHOULD READ IAW 8260.3E, PARA 2-6-3.
[CHANGED TO: IAW 8260.3E, PARA 2-6-3](#)
 - 3RD PARAGRAPH "2.83" IS ON CARRIAGE DOWN (FORMATTING)
[FORMATTING CORRECTED](#)
 - VDA LESS THAN VGSI ANGLE - IAW 8260.3E, 2-6-2.B.

8260-2:

- JOPIV, OXCUH, AND UJIVA MISSING FACILITY IN FIX USE – IAW 8260.19I, 8-5-2.J
[ADDED FAC 1, 2, 3 AND PAT 1 TO ILS OR LOC RWY 32 TO 8260-2 FORMS](#)

8260-3:

- NOTE: ADD "CHART NOTE: CIRCLING RWY 14 NA AT NIGHT" – TARGETS DETERMINED A 20:1 OBSTACLE 47-096945, IAW 8260.19I. VERIFY AIRPORT DATA.
[ADDED CHART NOTE: CIRCLING RWY 14 NA AT NIGHT TO 8260-3](#)

TARGETS DETERMINED THE FOLLOWING DIFFERENCES:

- 8260-3 CALCULATED VDP IAW 8260.3E, FORMULA 2-6-5 IS 12.75 DME DISTANCE VDP TO THLD 1.02 NM
[CHANGED ADD'L FLT DATA NOTE\(S\) TO: CHART VDP AT 12.75 DME AND DISTANCE VDP TO THLD 1.02 NM](#)
- 8260 -3 WX REMARKS: TARGETS DETERMINED KBNA 588 NOT 599 AND RA = 29.8 NOT 31.7
[CHANGED WEATHER REMARKS TO: KBNA 588, RA = 29.8.](#)
- 8260-9 CONTINGENCY NOTE: SHOULD BE "INCREASE S-ILS 32 DA" FROM 750 TO 748
[CHANGED CONTINGENCY ALTM NOTE TO: ...INCREASE S-ILS 32 DA TO 748 FEET...](#)

ADMINISTRATIVE NOTE: TYPO ON THE 8260-9, PG 8 OF 10 "CONTINGENTLY ALTIMETER NOTE"
[TYPO CORRECTED TO: CONTINGENCY ALTIMETER NOTE](#)

APPROVAL REQUESTS WILL BE APPROVED FOR A TEMPORARY PERIOD OF 3 YEARS TO ALLOW PLANNING FOR ADJUSTING THE VGSI OR TO PROVIDE MITIGATION FOR NOT ADJUSTING THE VGSI.

Flight Procedures Cover Page	Task Action: FLIGHT CHECK	Task Type: IAP	Estimated Chart Date: 04/17/2025	APWS Task ID: 8FAFF916EC7F4761A093D5D2CF4E3B85	APWS Project ID: 5D05389C8C0C4D41937E9913F719D950
Procedure: ILS OR LOC RWY 32 AMDT 7		Enroute: NO	Specialist: Bristow, Travis		Agreement Number:
Airport ID: KMQY			Airport City: SMYRNA		State: TN
Facility ID: MQY	Facility Type: ILS	Flight Inspection Remark Type: Hold FC Slot			
<div>Procedure Comments: FQW NDB DECOM</div> <div>ACTIVE DATA USED FOR AIRPORT AND RUNWAYS</div> <div>APPROVAL LETTERS 1. GPA (2.83) LESS THAN 3.00 DEGREES. 2. VDA (2.83) LESS THAN VGSI ANGLE (3.00).</div> <div>CONTACT JASON KRETSCHMER: 405.954.4019.</div> <div>04/11/2023: THIS IS AN UPDATED COPY OF THE FORM DEVELOPED ON 04/11/2022. 1. ALTERNATE MISSED APPROACH INSTRUCTIONS: ADDED "CONTINUE CLIMB-IN-HOLD TO 3000" - CIH REQUIRED. 2. NOTES: ADDED "CIRCLING RWY 14 NA AT NIGHT" - 20:1 PENETRATION FOUND FOR RWY 14. 3. ADDITIONAL FLIGHT DATA: UPDATED VDP DME DISTANCE FROM "12.72" TO "12.75" AND VDP TO THLD DISTANCE FROM "0.98" TO "1.02" - UPDATED AIRPORT DATA/EVALUATION.</div> <div>8260-2: JOPIV 1. FIX USE: ADDED FAC 1, 2, 3 AND PAT 1 TO ILS OR LOC RWY 32.</div> <div>8260-2: OXCUH 1. FIX USE: ADDED FAC 1, 2 TO ILS OR LOC RWY 32.</div> <div>8260-2: UJIVA 1. FIX USE: ADDED FAC 1, 2 TO ILS OR LOC RWY 32.</div> <div>02/18/2025: THIS IS AN UPDATED COPY OF THE FORM DEVELOPED ON 04/11/2022. 1. MISSED APPROACH INSTRUCTIONS: UPDATED INSTRUCTIONS TO READ "CLIMB TO 1500 THEN CLIMBING RIGHT TURN TO 3000 ON HEADING 060 AND ON BNA VORTAC R-104 TO WORDU/BNA 18.60 DME AND HOLD". 2. MINIMA: CHANGED ALTERNATE MINIMA FROM "ILS: STANDARD - NA WHEN LOCAL WEATHER NOT AVAILABLE.; LOC: STANDARD - CAT D 1000-3, NA WHEN LOCAL WEATHER NOT AVAILABLE" TO "NA".</div> <div><div>QUALITY 9 CHECKED BEGUE</div><div>QUALITY 34 CHECKED</div></div>					

FIPC BASIC FORM							
PROCEDURE: ILS OR LOC RWY 32 AMDT 7			AIRPORT NAME: SMYRNA		AIRPORT ID: KMQY	SPECIAL CONTROL NO: AP-07-228-23	
FAC ID: MQY		CITY: SMYRNA			ST: TN	ORIG CHART DATE: 02/20/2025	
DFL TYPE: PROC/A	THIRD PARTY: <input type="checkbox"/> YES	EST. TIME ON SITE: 0.4	REIMB. NUMBER:		PTS TASK ID: 8FAFF916EC7F4761A093D5D2CF4E3B85		
PREFLIGHT NOTES							
REVIEWER:					DATE:		
COMMENTS:					CHECK ONE:		
					<input type="checkbox"/> FLT CK REQ <input type="checkbox"/> NFCR <input type="checkbox"/> REJECT		
							YES
					CPV COMPLETE?		X
PROCEDURE RESULTS							
INSPECTION DATE: 02/05/2025		CREW #: VN335	N #: N73	INSTRUMENT PROCEDURE STATUS: <input type="checkbox"/> SAT <input checked="" type="checkbox"/> SAT W/CHANGES <input type="checkbox"/> UNSAT		ARINC CODING: <input type="checkbox"/> SAT <input type="checkbox"/> SAT/GOLD <input type="checkbox"/> UNSAT	
FLIGHT INSPECTOR SIGNATURE: george e searles @ 02/05/2025 20:47			PRINTED NAME: SEARLES, GEORGE EDWARD			NOTAM INITIATED? <input type="checkbox"/> YES <input checked="" type="checkbox"/> NO	
FLIGHT INSPECTOR REMARKS: The Initial inspection for the procedure started on 2023-08-03, N84. Unable to complete the MAPCH portion due to BNA VORTAC O/S. The missed approach instruction to fly heading 080 does not intercept the BNA R-104. Suggest a heading between 045-060.							
IN-FLIGHT OBSTACLE REPORT							
OBSTRUCTION ID #:	COORDINATES OR LOCATION:		GNSS ALTITUDE (MSL):		BAROMETRIC ALTITUDE (MSL):		HEIGHT ABOVE GROUND LEVEL:



Federal Aviation Administration

Memorandum

To: Flight Technologies and Procedures

From: Marlon Robinson, Manager, Instrument Flight Procedures (IFP), AJV-420

Subject: Approval Request: Use of Glidepath Angle (GPA) less than 3.00 degrees.

Smyrna, Smyrna, TN (KMQY) - ILS OR LOC RWY 32 AMDT 7

Request approval for the ILS or LOC RWY 32, AMDT 7 GPA (2.83) being less than 3.00 degrees.

IAW 8260.3E Paragraph 2-6-3 use of a GPA less than 3.00 degrees requires approval.

2-6-3. GPA. Use a standard 3.00 degree GPA where possible. A GPA greater than 3.00 degrees but not more than the maximum (see Table 2-6-1) is authorized without approval when needed to provide obstacle clearance or to meet simultaneous parallel approach standards. Other cases or a GPA less than 3.00 degrees requires approval (see paragraph 1-4-2). U.S. Air Force (USAF) and U.S. Navy (USN) minimum GPA is 2.50 degrees.

The current commissioned GPA for I-MQY is 2.83 and is at the end of its service life. Project JCN 504774 is being worked and set to complete commissioning by 9/11/2025. The new system is designed to increase the GPA to 3.00 degrees.

This Approval Letter is to retain the published GPA value of 2.83 until project JCN 504774 is complete/commissioned with new 3.00 GPA



Federal Aviation Administration

Memorandum

To: Flight Technologies and Procedures

From: Marlon Robinson, Manager, Instrument Flight Procedures (IFP), AJV-420

Subject: Approval Request: Use of Vertical Descent Angle (VDA) less than the angle of the visual glide slope indicator (VGSI).

Smyrna, Smyrna, TN (KMQY) - ILS OR LOC RWY 32 AMDT 7

Request approval for the ILS or LOC RWY 32, AMDT 7 VDA (2.83) being less than the current commissioned angle of the VGSI (3.00).

IAW 8260.3E Paragraph 2-6-2 b, use of a VDA less than the angle of a VGSI installed to the same runway requires approval.

2-6-2. Glidepath Angle (GPA) and Vertical Descent Angle (VDA).

b. Approval is required to establish a VDA (of a procedure where the FAC is straight-in aligned) that is less than the angle of a VGSI installed to the same runway (see paragraph 1-4-2).

Use of a 2.83 VDA aligns the non-precision (LOC) with the precision (ILS) GPA and allows for co-located PFAF.

The current commissioned I-MQY is at the end of its service life. Project JCN 504774 is being worked and set to complete commissioning by 9/11/2025. The new system is designed to increase the GPA to 3.00 degrees. When complete, the procedure will require a full redesign to match the GPA and VGSI.

Adjustment of the VGSI to 2.83 is not a reasonable or cost effective solution due to the future I-MQY project.

This Approval Letter is to retain the published VDA value of 2.83 until project JCN 504774 is complete/commissioned with new 3.00 GPA.

FIG

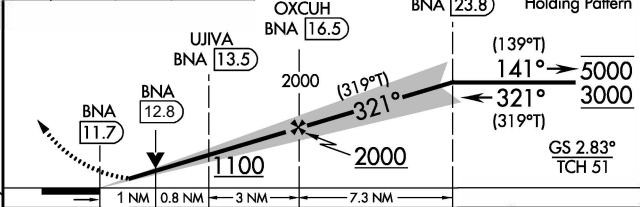
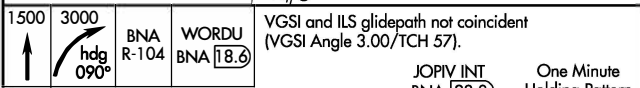
ILS or LOC RWY 32
SMYRNA (MQY)

MISSED APPROACH: Climb to 1500 then climbing right turn to 3000 on heading 060° and on BNA VORTAC R-104 to WORDU/BNA 18.6 DME and hold.



121.7
(When twr closed)

ALTERNATE MISSED
APCH FIX
CUYAG
SYI 24
113.55 SYI
Chan 82 (Y)
R-009
(188°)
(189°)



CATEGORY	A	B	C	D
S-ILS 32	718-1½ 200 (200-½)			
S-LOC 32	900-½ 382 (400-½)	900-5/8 382 (400-5/8)		
C CIRCLING	1100-1 557 (600-1)	1180-1 637 (700-1)	1260-2 717 (800-2)	1480-3 937 (1000-3)

SMYRNA (MQY)

ILS or LOC RWY 32

SMYRNA
KMQY
ILS OR LOC RWY 32
AMDT 7
500K

Missed Level Surface
TOWER (1449) 47-000496

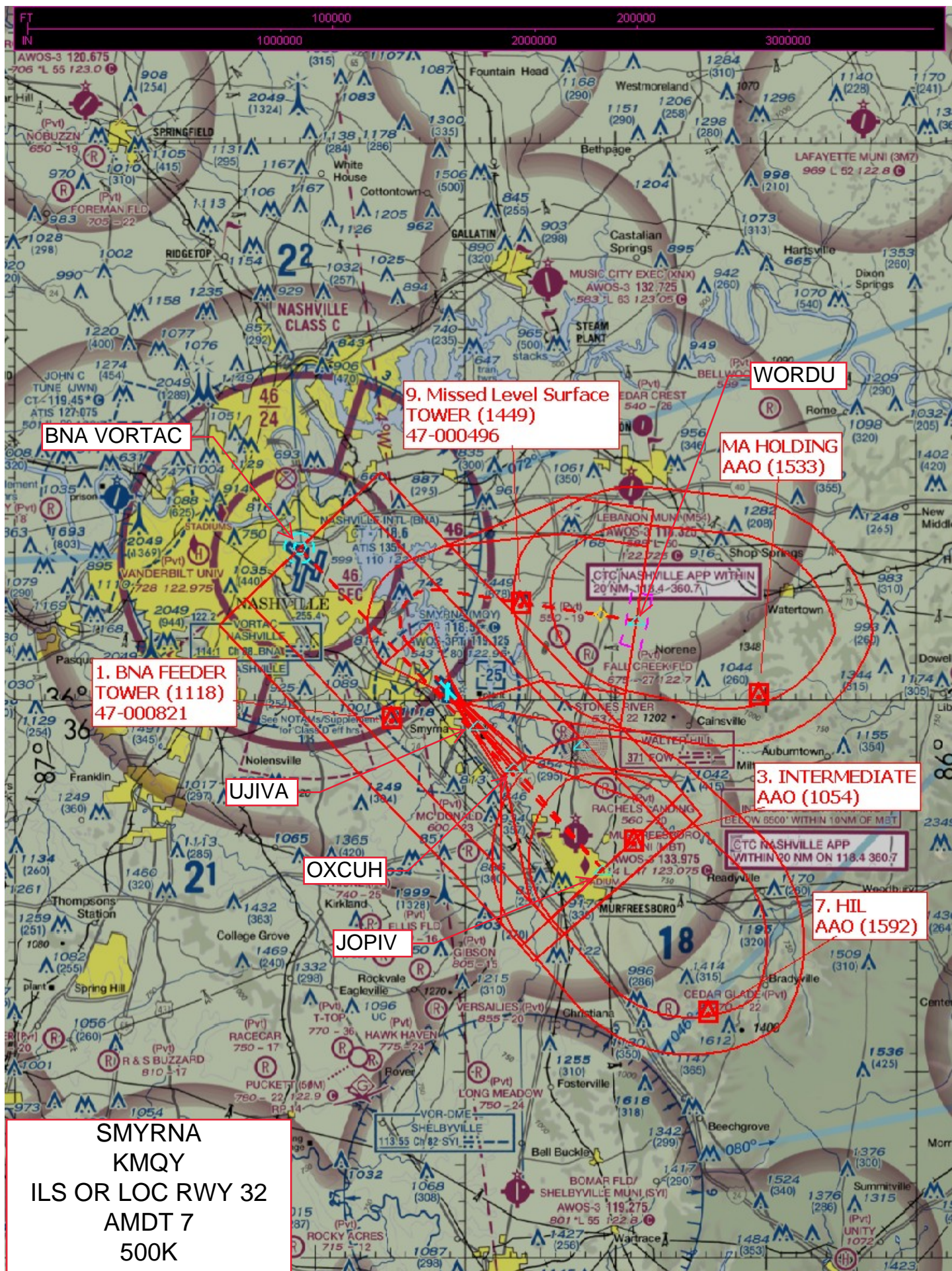
1. BNA FEEDER
TOWER (1118) 47-000821

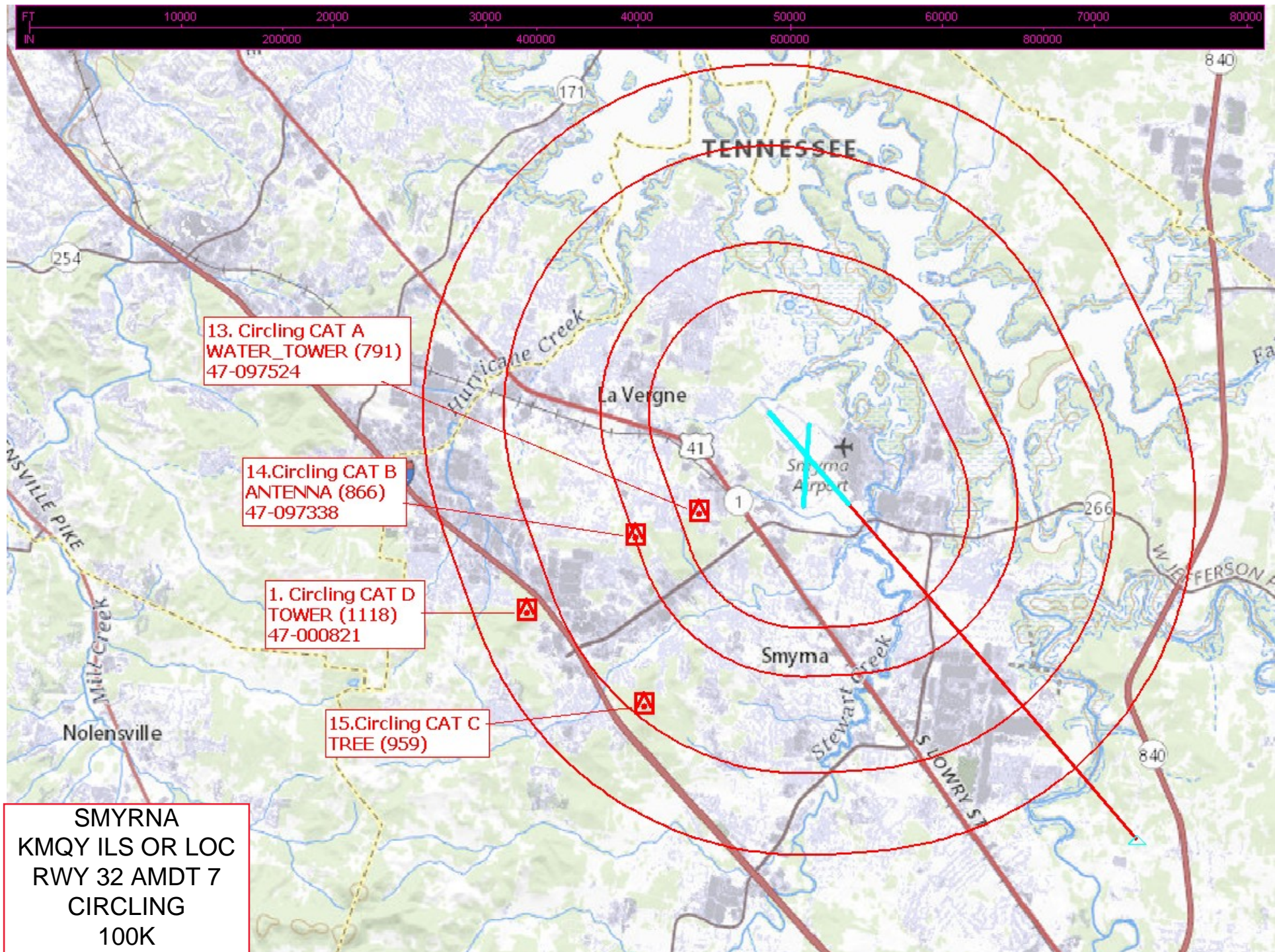
MA HOLDING AAO (1533)

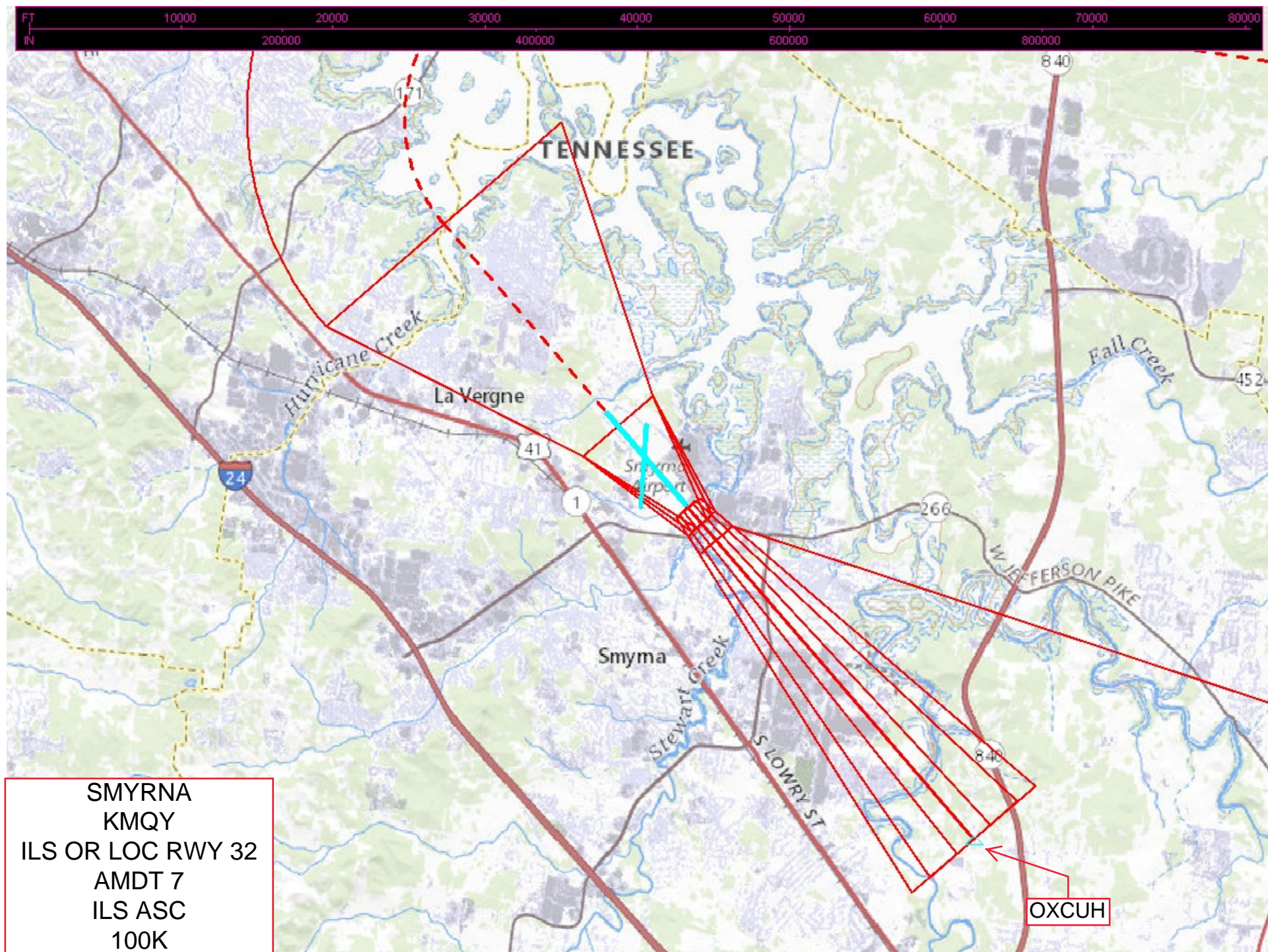
3. INTERMEDIATE AAO (1040)

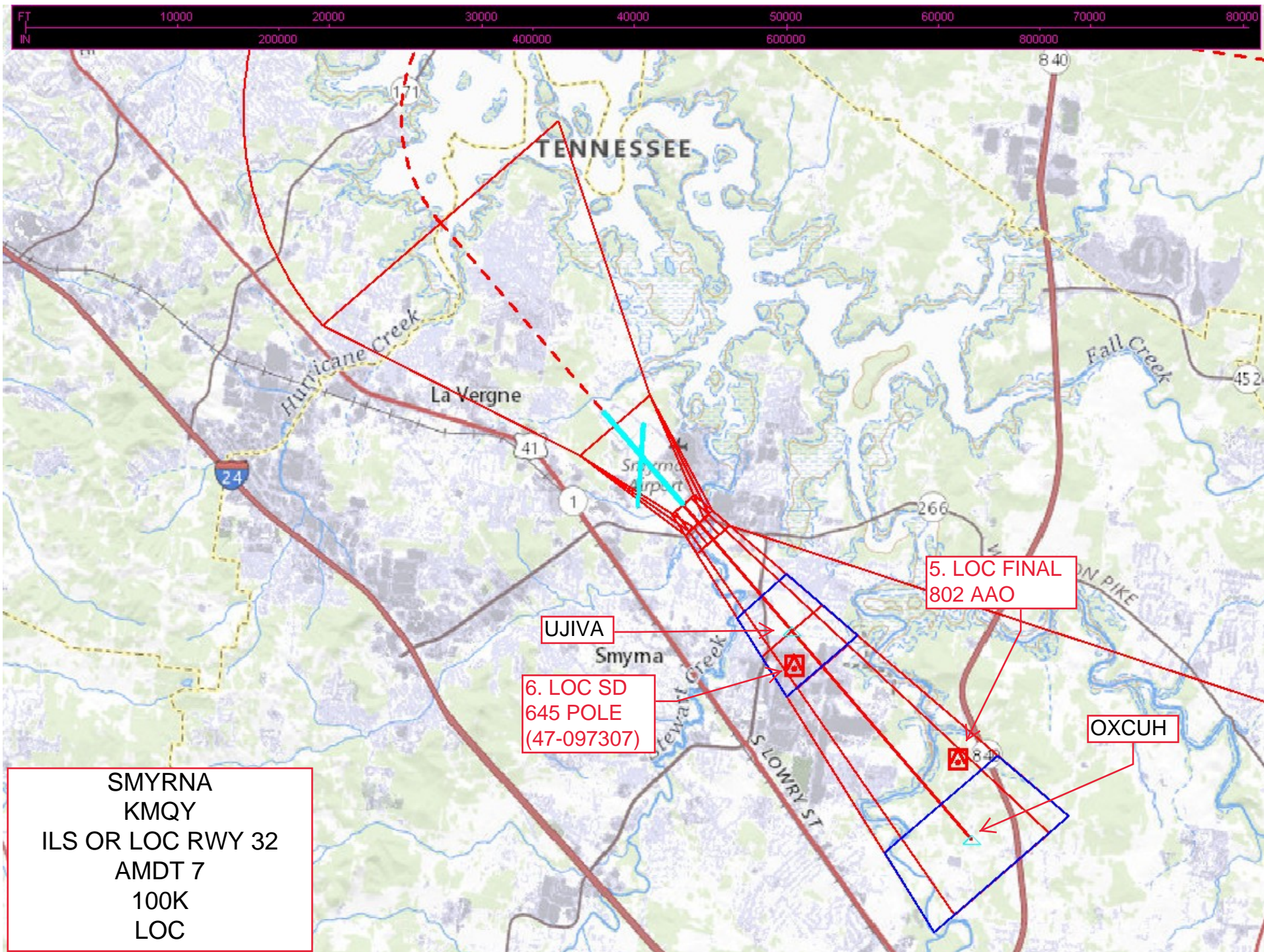
7. HIL: AAO (1592)

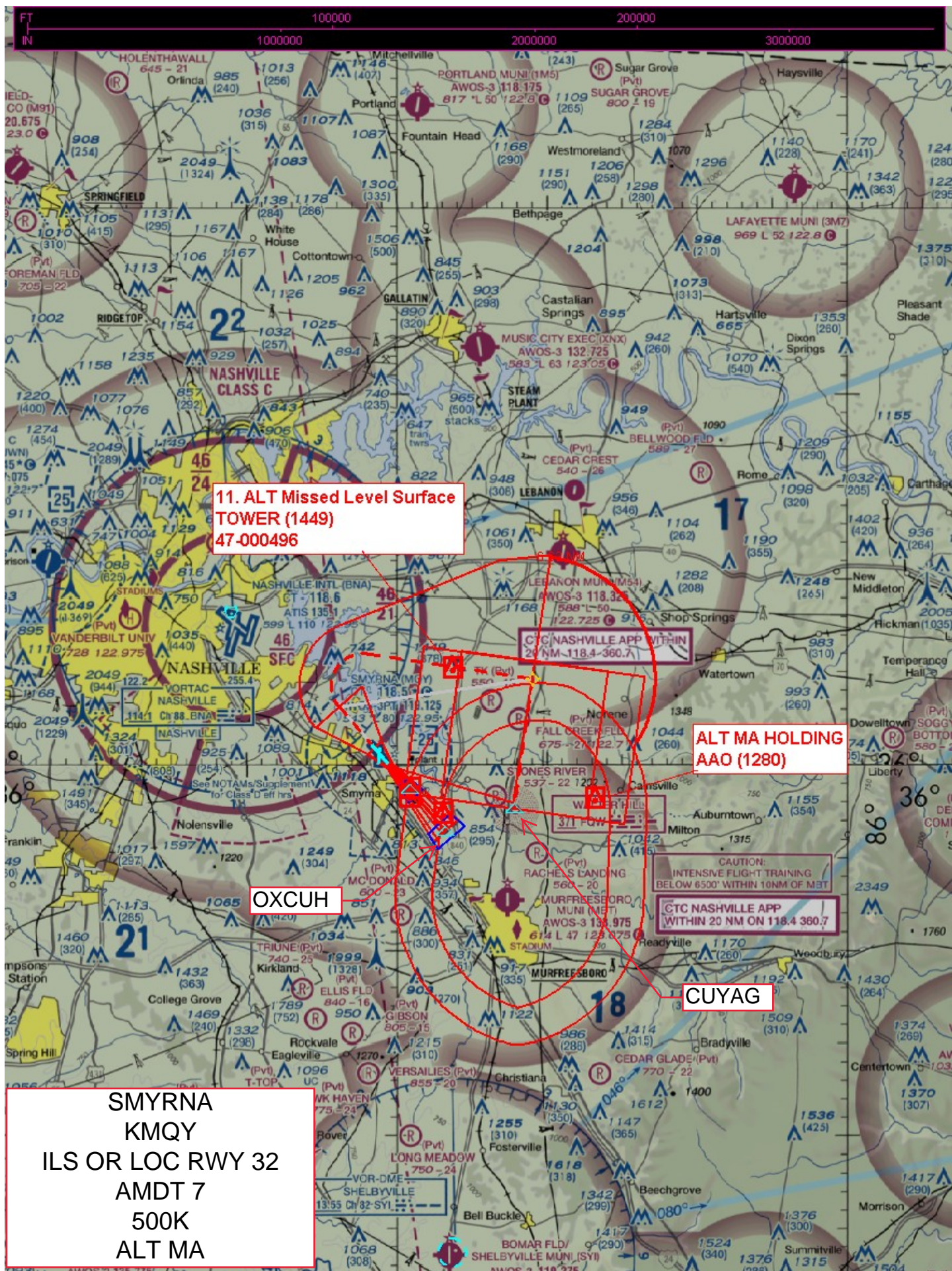
7. HIL: AAO (1592)











SMYRNA
KMQY
ILS OR LOC RWY 32 AMDT 7
ALTERNATE MA - CIH
500K

