

FEDERAL AVIATION ADMINISTRATION
 FLIGHT STANDARDS SERVICE
 STANDARD TERMINAL ARRIVAL (STAR)

Bearings, headings, courses, tracks and radials are magnetic. Elevations and altitudes are in feet, MSL. Altitudes are minimum altitudes unless otherwise indicated.
 Ceilings are in feet above airport elevation. Distances are in nautical miles. Visibilities are in statute miles or feet RVR unless otherwise indicated.

| Arrival Name | Number | STAR Computer Code | Superseded Number | Dated | Effective Date |
|--------------|--------|--------------------|-------------------|-------|----------------|
| MUNGI (RNAV) | ONE | MUNGI.MUNGI1 | NONE | | |

TRANSITION ROUTES:

| Transition Name | Transition Computer Codes | From FIX/NAVAID | To FIX/NAVAID | Course | Distance | MEA | MOCA | MAA | Crossing Altitudes / Fixes |
|-----------------|---------------------------|-----------------|---------------|--------|----------|-------|------|-------------------------|----------------------------|
| CCLUB | CCLUB.MUNGI1 | CCLUB | CCLUB | | | | | | |
| | | | ZALUP | 302.85 | 74.57 | 8000 | 2700 | | |
| | | | MUNGI | 310.21 | 17.20 | 6000 | 2700 | | |
| CHEFS | CHEFS.MUNGI1 | CHEFS | CHEFS | | | | | | BETWEEN FL190 AND FL210 |
| | | | MOOTS | 344.90 | 12.44 | 8000 | 2700 | AT/ABOVE 15000 | |
| | | | MUNGI | 341.02 | 24.43 | 6000 | 2700 | | |
| KUTNE | KUTNE.MUNGI1 | KUTNE | KUTNE | | | | | | |
| | | | CORNN | 018.12 | 54.63 | FL180 | 2700 | | |
| | | | BANDZ | 345.67 | 30.90 | FL180 | 2700 | BETWEEN FL210 AND FL230 | |
| | | | CHEFS | 345.46 | 16.96 | 16000 | 2700 | BETWEEN FL190 AND FL210 | |
| | | | MOOTS | 344.90 | 12.44 | 8000 | 2700 | AT/ABOVE 15000 | |
| MUNGI | | | MUNGI | 341.02 | 24.43 | 6000 | 2700 | | |
| | | | CORNN | 298.89 | 30.74 | FL180 | 2700 | | |
| | | | BANDZ | 345.67 | 30.90 | FL180 | 2700 | BETWEEN FL210 AND FL230 | |
| | | | CHEFS | 345.46 | 16.96 | 16000 | 2700 | BETWEEN FL190 AND FL210 | |
| | | | MOOTS | 344.90 | 12.44 | 8000 | 2700 | AT/ABOVE 15000 | |
| OCTAL | OCTAL.MUNGI1 | OCTAL | OCTAL | | | | | | AT/BELOW FL300 |
| | | | CORNN | 340.88 | 31.11 | FL180 | 2700 | | |
| | | | BANDZ | 345.67 | 30.90 | FL180 | 2700 | BETWEEN FL210 AND FL230 | |
| | | | CHEFS | 345.46 | 16.96 | 16000 | 2700 | BETWEEN FL190 AND FL210 | |
| | | | MOOTS | 344.90 | 12.44 | 8000 | 2700 | AT/ABOVE 15000 | |
| MUNGI | | | MUNGI | 341.02 | 24.43 | 6000 | 2700 | | |
| | | | ZALUP | 270.54 | 25.38 | 8000 | 2700 | | |



FEDERAL AVIATION ADMINISTRATION
 FLIGHT STANDARDS SERVICE
 STANDARD TERMINAL ARRIVAL (STAR)

Bearings, headings, courses, tracks and radials are magnetic. Elevations and altitudes are in feet, MSL. Altitudes are minimum altitudes unless otherwise indicated.
 Ceilings are in feet above airport elevation. Distances are in nautical miles. Visibilities are in statute miles or feet RVR unless otherwise indicated.

| Arrival Name | Number | | | STAR Computer Code | Superseded Number | | | Dated | Effective Date |
|-----------------|---------------------------|-----------------|---------------|--------------------|-------------------|------|------|-------|----------------------------|
| MUNGI (RNAV) | ONE | | | MUNGI.MUNGI1 | NONE | | | | |
| Transition Name | Transition Computer Codes | From FIX/NAVAID | To FIX/NAVAID | Course | Distance | MEA | MOCA | MAA | Crossing Altitudes / Fixes |
| | | | MUNGI | 310.21 | 17.20 | 6000 | 2700 | | |
| WAPOM | WAPOM.MUNGI1 | WAPOM | WAPOM | | | | | | |
| | | | MUNGI | 351.16 | 37.95 | 6000 | 2700 | | |

ARRIVAL ROUTE DESCRIPTION:

MCO: FROM MUNGI ON TRACK 345.43/9.38 TO HIJON.

LANDING MCO RWY 17L/R, 18L/R: FROM HIJON ON TRACK 344.69/12.28 TO CROSS PARRX BETWEEN 9000 AND 11000 AND AT 250 KIAS, THEN ON TRACK 005.06/7.10 TO CROSS HAANZ BETWEEN 8000 AND 9000 AND AT 220 KIAS, THEN ON TRACK 005.58/9.03 TO CROSS WONMR AT 6000 AND AT 210 KIAS, THEN ON TRACK 005.58. EXPECT RADAR VECTORS TO FINAL APPROACH COURSE.

LANDING MCO RWY 35L/R, 36L/R: FROM HIJON ON TRACK 345.68/4.39 TO CROSS MMADD AT 6000 AND AT 210 KIAS, THEN ON TRACK 301.56. EXPECT RADAR VECTORS TO FINAL APPROACH COURSE.

LANDING ISM: FROM MUNGI ON TRACK 345.43/6.99 TO CROSS PDLLA AT 8000, THEN ON TRACK 345.43. EXPECT RADAR VECTORS TO FINAL APPROACH COURSE.

LANDING LEE/SFB/ORL: FROM MUNGI ON TRACK 345.43/7.09 TO CROSS BLOKD AT 12000 AND AT 250 KIAS, THEN ON TRACK 345.43. EXPECT RADAR VECTORS TO FINAL APPROACH COURSE.

PBN REQUIREMENT NOTES:

RNAV 1 - DME/DME/IRU OR GPS

EQUIPMENT REQUIREMENT NOTES:

RADAR REQUIRED

PROCEDURAL DATA NOTES:

NOTE: JET AIRCRAFT ONLY

NOTE: EXPECT "DESCEND VIA" CLEARANCE AND LANDING DIRECTION (NORTH OR SOUTH) BY ARTCC. FOR VERTICAL NAVIGATION PLANNING, LANDING SOUTH, SELECT RWY 17L, LANDING NORTH, SELECT RWY 35R.

NOTE: MCO APPROACH WILL ISSUE LANDING RUNWAY.

NOTE: DO NOT FILE LAIZY AND SPIFF TRANSITIONS - TO BE ASSIGNED BY ATC.

NOTE: CCLUB TRANSITION, ATC ASSIGNED ONLY EXCEPT AT OR BELOW FL240.

FIXES AND/OR HOLDING PATTERNS:

CHART HOLDING AT MUNGI: HOLD S, RT, 345.43 INBOUND, 10 NM LEGS.

CHART HOLDING AT ZALUP: HOLD SE, RT, 310.21 INBOUND, 10 NM LEGS.

COMMUNICATIONS:

AIRPORTS SERVED:

| AIRPORT ID | CITY | STATE |
|------------|----------|-------|
| MCO | ORLANDO | FL |
| ORL | ORLANDO | FL |
| ISM | ORLANDO | FL |
| LEE | LEESBURG | FL |
| SFB | ORLANDO | FL |



FEDERAL AVIATION ADMINISTRATION
 FLIGHT STANDARDS SERVICE
 STANDARD TERMINAL ARRIVAL (STAR)

Bearings, headings, courses, tracks and radials are magnetic. Elevations and altitudes are in feet, MSL. Altitudes are minimum altitudes unless otherwise indicated.
 Ceilings are in feet above airport elevation. Distances are in nautical miles. Visibilities are in statute miles or feet RVR unless otherwise indicated.

| Arrival Name | Number | STAR Computer Code | Superseded Number | Dated | Effective Date |
|--------------|--------|--------------------|-------------------|-------|----------------|
| MUNGI (RNAV) | ONE | MUNGI.MUNGI1 | NONE | | |

LOST COMMUNICATIONS PREFERENCES:

REMARKS:

THE ENVIRONMENTAL REVIEW UNDER ORDER 1050.1 (LATEST EDITION) AND THE NOISE SCREENING HAVE BEEN ACCOMPLISHED.
 UTILIZED BANK ANGLE 16 DEGREES AT WP ZALUP.
 2700 FT MOCA VALUES DUE TO 1626 MSL TWR (12-003655) LOCATED BETWEEN HIJON-PARRX.

ADDITIONAL FLIGHT DATA:

DME/DME ASSESSMENT: SAT (RNP 2.0)
 MAG VAR: MCO 06W/2015
 CHART AT MMADD TERMINUS: MCO LDG RWY 35L/R, 36L/R
 CHART AT WONMR TERMINUS: MCO LDG RWY 17L/R, 18L/R
 CHART AT PDLLA TERMINUS: LDG ISM
 CHART AT BLOKD TERMINUS: LDG LEE/ORL/SFB

FLIGHT INSPECTED BY:

KENNETH E JACK

ORGANIZATION:

AJF

DATE:

12/18/2025

Flight Inspected Signature:

Digitally signed by

CASIMIR L TABAKA

Dec 23, 2025

DEVELOPED BY:

RAFAEL A MARTINEZ

AJV-A421

10/21/2025

Developed By Signature:

Digitally signed by
CASIMIR L TABAKA

APPROVED BY:

BEV L BORDY

AJV-A420

Approved By Signature:

Digitally signed by Nov 25, 2025
CASIMIR L TABAKA
 Nov 25, 2025

CHANGES:

REASONS:

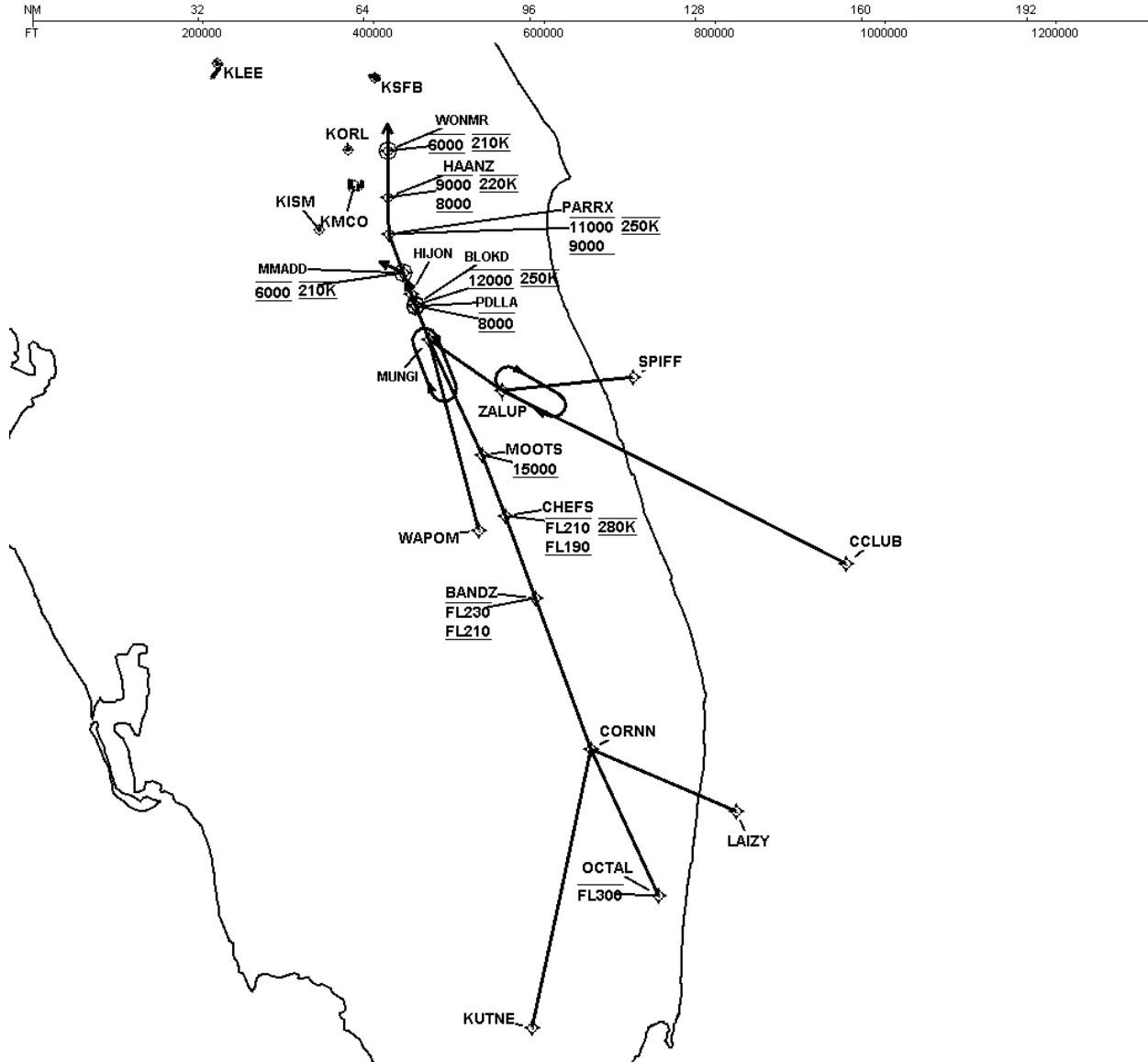


FEDERAL AVIATION ADMINISTRATION
 FLIGHT STANDARDS SERVICE
 STANDARD TERMINAL ARRIVAL (STAR)

Bearings, headings, courses, tracks and radials are magnetic. Elevations and altitudes are in feet, MSL. Altitudes are minimum altitudes unless otherwise indicated.
 Ceilings are in feet above airport elevation. Distances are in nautical miles. Visibilities are in statute miles or feet RVR unless otherwise indicated.

| Arrival Name | Number | STAR Computer Code | Superseded Number | Dated | Effective Date |
|--------------|--------|--------------------|-------------------|-------|----------------|
| MUNGI (RNAV) | ONE | MUNGI.MUNGI1 | NONE | | |

Graphic Depiction 1

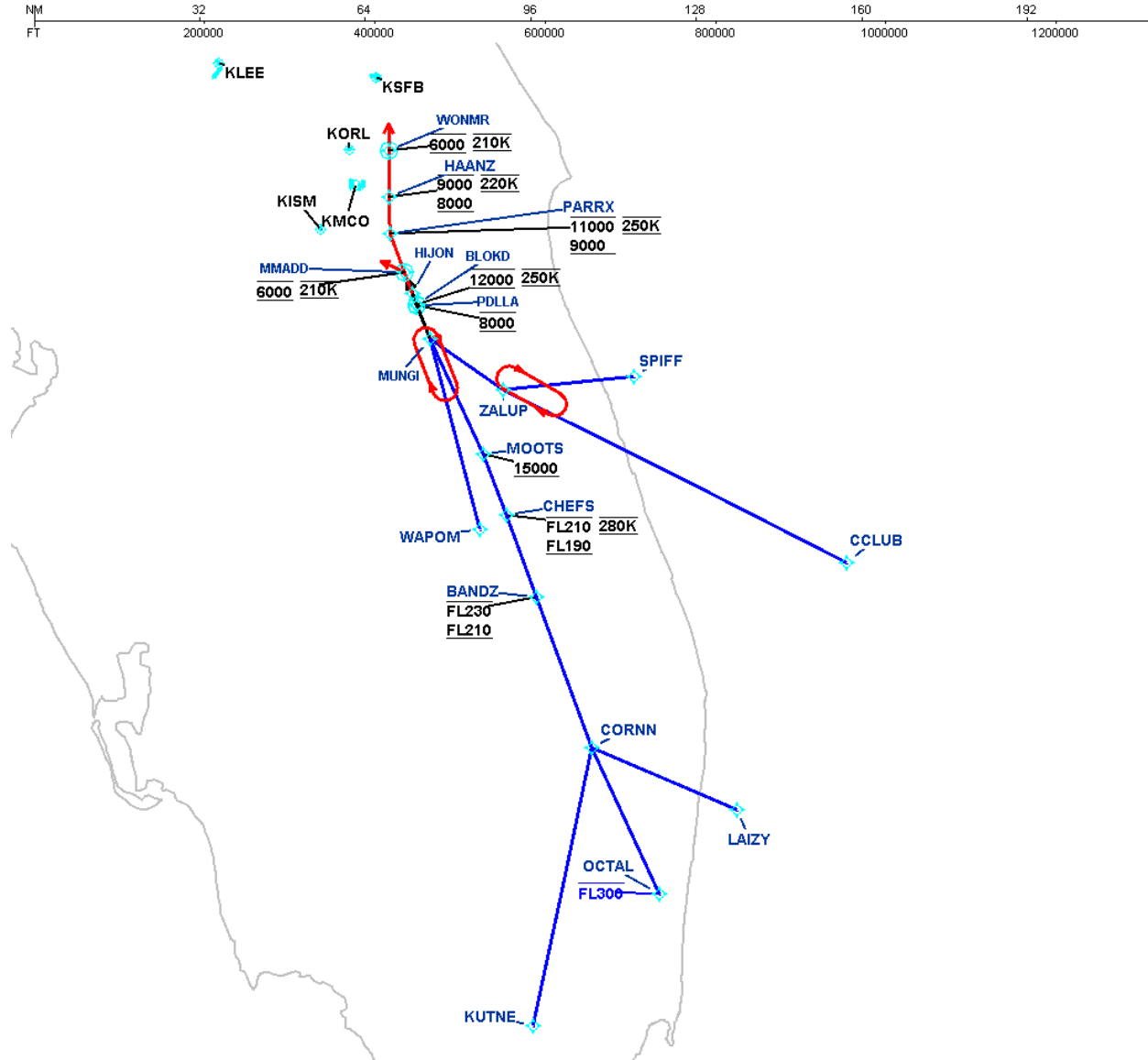


FEDERAL AVIATION ADMINISTRATION
 FLIGHT STANDARDS SERVICE
 STANDARD TERMINAL ARRIVAL (STAR)

Bearings, headings, courses, tracks and radials are magnetic. Elevations and altitudes are in feet, MSL. Altitudes are minimum altitudes unless otherwise indicated.
 Ceilings are in feet above airport elevation. Distances are in nautical miles. Visibilities are in statute miles or feet RVR unless otherwise indicated.

| Arrival Name | Number | STAR Computer Code | Superseded Number | Dated | Effective Date |
|--------------|--------|--------------------|-------------------|-------|----------------|
| MUNGI (RNAV) | ONE | MUNGI.MUNGI1 | NONE | | |

Graphic Depiction 2



FEDERAL AVIATION ADMINISTRATION
 FLIGHT STANDARDS SERVICE
 STAR (DATA RECORD)

| Arrival Name MUNGI (RNAV) | Number ONE | STAR Computer Code MUNGI.MUNGI1 | | Superseded Number NONE | | Dated | Effective Date | | |
|------------------------------|--------------------------|------------------------------------|-------|---------------------------|--------|--------------|----------------|---------|--------------|
| FIX/NAVAID | LAT/LONG | C | FO/FB | LEG TYPE | TC | DIST (NM) | ALTITUDE | SPEED | REMARKS |
| En Route Transition | | | | | | | | | |
| CCLUB | 271258.23N / 0793116.72W | Y | | IF | | | | | CCLUB.MUNGI1 |
| ZALUP | 274624.15N / 0804616.83W | Y | FB | TF | 296.85 | 74.57 | | | |
| MUNGI | 275605.00N / 0810220.22W | Y | FB | TF | 304.21 | 17.20 | | | |
| En Route Transition | | | | | | | | | |
| CHEFS | 272214.97N / 0804538.96W | Y | | IF | | | FL190BFL210 | AT 280K | CHEFS.MUNGI1 |
| MOOTS | 273353.00N / 0805041.25W | Y | FB | TF | 338.90 | 12.44 | AT/ABOVE 15000 | | |
| MUNGI | 275605.00N / 0810220.22W | Y | FB | TF | 335.02 | 24.43 | | | |
| En Route Transition | | | | | | | | | |
| KUTNE | 254342.77N / 0803943.96W | Y | | IF | | | | | KUTNE.MUNGI1 |
| CORNNN | 263716.28N / 0802655.91W | Y | FB | TF | 012.12 | 54.63 | | | |
| BANDZ | 270619.32N / 0803857.91W | Y | FB | TF | 339.67 | 30.90 | FL210BFL230 | | |
| CHEFS | 272214.97N / 0804538.96W | Y | FB | TF | 339.46 | 16.96 | FL190BFL210 | AT 280K | |
| MOOTS | 273353.00N / 0805041.25W | Y | FB | TF | 338.90 | 12.44 | AT/ABOVE 15000 | | |
| MUNGI | 275605.00N / 0810220.22W | Y | FB | TF | 335.02 | 24.43 | | | |
| En Route Transition | | | | | | | | | |
| LAIZY | 262520.14N / 0795519.96W | Y | | IF | | | | | LAIZY.MUNGI1 |
| CORNNN | 263716.28N / 0802655.91W | Y | FB | TF | 292.89 | 30.74 | | | |
| BANDZ | 270619.32N / 0803857.91W | Y | FB | TF | 339.67 | 30.90 | FL210BFL230 | | |
| CHEFS | 272214.97N / 0804538.96W | Y | FB | TF | 339.46 | 16.96 | FL190BFL210 | AT 280K | |
| MOOTS | 273353.00N / 0805041.25W | Y | FB | TF | 338.90 | 12.44 | AT/ABOVE 15000 | | |
| MUNGI | 275605.00N / 0810220.22W | Y | FB | TF | 335.02 | 24.43 | | | |
| En Route Transition | | | | | | | | | |
| OCTAL | 260901.92N / 0801211.60W | Y | | IF | | | AT/BELOW FL300 | | OCTAL.MUNGI1 |
| CORNNN | 263716.28N / 0802655.91W | Y | FB | TF | 334.88 | 31.11 | | | |
| BANDZ | 270619.32N / 0803857.91W | Y | FB | TF | 339.67 | 30.90 | FL210BFL230 | | |



FEDERAL AVIATION ADMINISTRATION
 FLIGHT STANDARDS SERVICE
 STAR (DATA RECORD)

| Arrival Name MUNGI (RNAV) | Number ONE | STAR Computer Code MUNGI.MUNGI1 | | Superseded Number NONE | | Dated | Effective Date | | |
|------------------------------|--------------------------|------------------------------------|--------------|---------------------------|-----------|----------------------|-----------------|--------------|----------------|
| <u>FIX/NAVAID</u> | <u>LAT/LONG</u> | <u>C</u> | <u>FO/FB</u> | <u>LEG TYPE</u> | <u>TC</u> | <u>DIST (NM)</u> | <u>ALTITUDE</u> | <u>SPEED</u> | <u>REMARKS</u> |
| CHEFS | 272214.97N / 0804538.96W | Y | FB | TF | 339.46 | 16.96 | FL190BFL210 | AT 280K | |
| MOOTS | 273353.00N / 0805041.25W | Y | FB | TF | 338.90 | 12.44 | AT/ABOVE 15000 | | |
| MUNGI | 275605.00N / 0810220.22W | Y | FB | TF | 335.02 | 24.43 | | | |
| En Route Transition | | | | | | | | | |
| SPIFF | 274852.31N / 0801747.79W | Y | | IF | | | | | SPIFF.MUNGI1 |
| ZALUP | 274624.15N / 0804616.83W | Y | FB | TF | 264.54 | 25.38 | | | |
| MUNGI | 275605.00N / 0810220.22W | Y | FB | TF | 304.21 | 17.20 | | | |
| En Route Transition | | | | | | | | | |
| WAPOM | 271918.06N / 0805121.54W | Y | | IF | | | | | WAPOM.MUNGI1 |
| MUNGI | 275605.00N / 0810220.22W | Y | FB | TF | 345.16 | 37.95 | | | |
| Common Route | | | | | | | | | |
| MUNGI | 275605.00N / 0810220.22W | Y | | IF | | | | | MUNGI.MUNGI1 |
| HIJON | 280453.30N / 0810603.78W | Y | FB | TF | 339.43 | 09.38 | | | |
| Common Route | | | | | | | | | |
| MUNGI | 275605.00N / 0810220.22W | Y | | IF | | | | | MUNGI.MUNGI1 |
| PDLLA | 280238.70N / 0810506.76W | Y | FO | TF | 339.43 | 06.99 | AT 8000 | | |
| KISM | | | | FM | 339.43 | | | | |
| Common Route | | | | | | | | | |
| MUNGI | 275605.00N / 0810220.22W | Y | | IF | | | | | MUNGI.MUNGI1 |
| BLOKD | 280244.33N / 0810509.15W | Y | FO | TF | 339.43 | 07.09 | AT 12000 | AT 250K | |
| KLEE,KORL,KSFB | | | | FM | 339.43 | | | | |
| Runway Transition | | | | | | | | | |
| HIJON | 280453.30N / 0810603.78W | Y | | IF | | | | | |
| PARRX | 281621.59N / 0811107.10W | Y | FB | TF | 338.69 | 12.28 | 9000B11000 | AT 250K | |



FEDERAL AVIATION ADMINISTRATION
 FLIGHT STANDARDS SERVICE
 STAR (DATA RECORD)

| Arrival Name MUNGI (RNAV) | Number ONE | STAR Computer Code MUNGI.MUNGI1 | | Superseded Number NONE | | Dated | Effective Date | | |
|--|---------------------------|------------------------------------|--------------|---------------------------|-----------|----------------------|-----------------|--------------|----------------|
| <u>FIX/NAVAID</u> | <u>LAT/LONG</u> | <u>C</u> | <u>FO/FB</u> | <u>LEG TYPE</u> | <u>TC</u> | <u>DIST (NM)</u> | <u>ALTITUDE</u> | <u>SPEED</u> | <u>REMARKS</u> |
| HAANZ | 282328.89N / 08111114.99W | Y | FB | TF | 359.06 | 07.10 | 8000B9000 | AT 220K | |
| WONMR | 283232.14N / 08111119.47W | Y | FO | TF | 359.58 | 09.03 | AT 6000 | AT 210K | |
| KMCO:RWY 17L,RWY 17R,RWY 18L,RWY 18R | | | | FM | 359.58 | | | | |
| Runway Transition | | | | | | | | | |
| HIJON | 280453.30N / 0810603.78W | Y | | IF | | | | | |
| MMADD | 280900.93N / 0810747.27W | Y | FO | TF | 339.68 | 04.39 | AT 6000 | AT 210K | |
| KMCO:RWY 35L,RWY 35R,RWY 36L,RWY 36R | | | | FM | 295.56 | | | | |

