

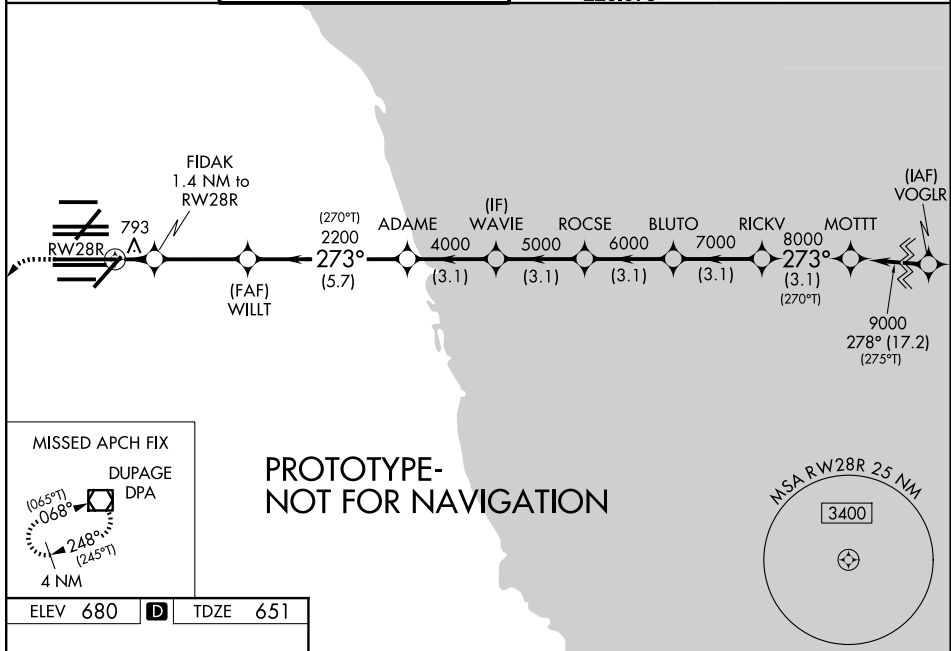
WAAS CH 42804 W28A	APP CRS 273°	Rwy Ldg 13000 TDZE 651 Apt Elev 680
--	------------------------	--

RNAV (GPS) RWY 28R

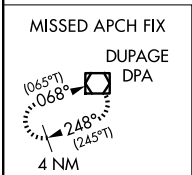
CHICAGO O'HARE INTL (ORD)

RNP APCH - GPS.	ALSF-2 	MISSED APPROACH: Climb to 1200 then climbing left turn to 4000 direct DPA VOR/DME and hold.
<p>▼ For uncompensated Baro-VNAV systems, LNAV/VNAV NA below -16°C or above 54°C. For inop ALS, increase LNAV/VNAV all Cats visibility to RVR 6000 and LNAV Cats C/D visibility to RVR 6000. Simultaneous approach authorized. LNAV procedure NA during simultaneous operations. Use of FD or AP providing RNAV track required during simultaneous operations.</p>		

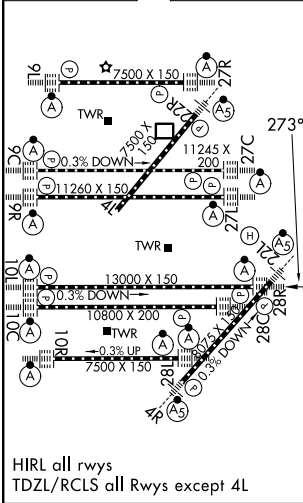
CHICAGO APP CON 119.0 292.125	O'HARE TOWER 132.7 348.0	GND CON (TWR NORTH) 124.125 (TWR SOUTH) 118.05 (ALL TWRS) 226.675	(TWR CENTER) 121.75 (OBND) (IBND) 121.9
---	------------------------------------	---	--



PROTOTYPE - NOT FOR NAVIGATION



ELEV 680	D	TDZE 651
----------	----------	----------



1200	4000	DPA	VGSI and RNAV glidepath not coincident (VGSI Angle 3.00/TCH 70).	