

(ALLN.ALLN1) FIG

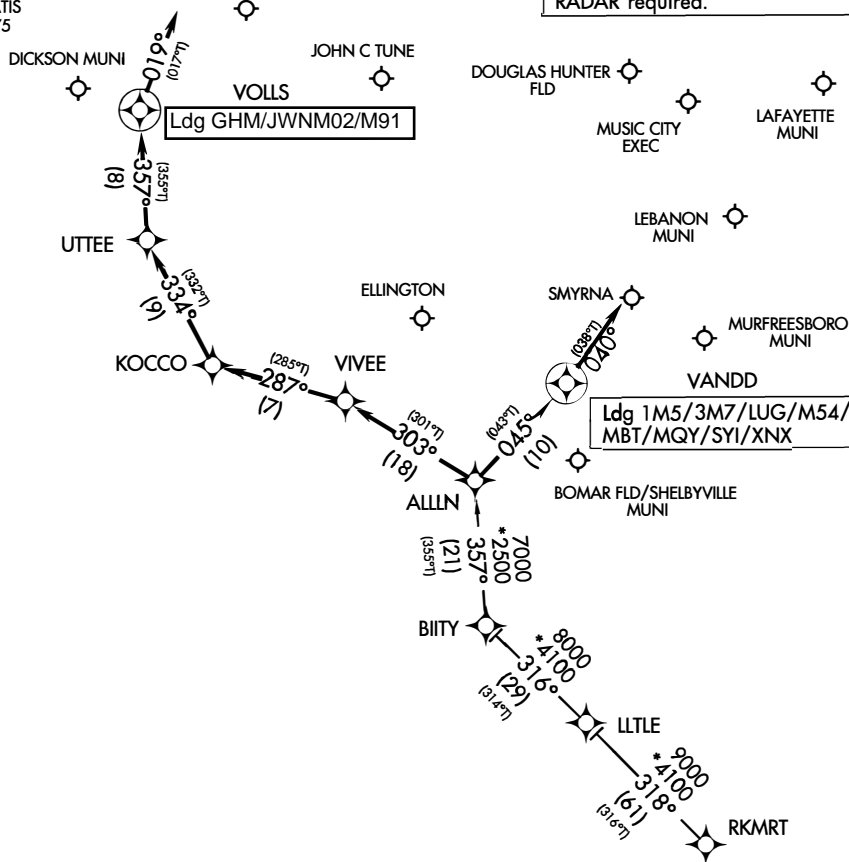
ALLN ONE ARRIVAL (RNAV)

NASHVILLE APP CON
118.4 360.7
JWN ATIS
127.075

SPRINGFIELD ROBERTSON
COUNTY

RNAV 1 - DME/DME/IRU or GPS.

RADAR required.



NOTE: LLTLE Transition for use by Atlanta area departures only.

PROTOTYPE-NOT FOR NAVIGATION

NOTE: Chart not to scale.

ARRIVAL ROUTE DESCRIPTION

LLTLE TRANSITION (LLTLE.ALLN1)

RKMRT TRANSITION (RKMRT.ALLN1)

LANDING MQY/3M7/LUG/M54/XNX/MBT/SYI/1M5: From ALLLN on track 045° to VANDD, then on track 040°. Expect RADAR vectors to final approach course.

LANDING GHM/JWN/M02/M91: From ALLLN on track 303° left turn to VIVEE, then on track 287° to KOCCO, then on track 334° to UTTEE, then on track 358° to VOLL, then on track 019°. Expect RADAR vectors to final approach course.

ALLN ONE ARRIVAL (RNAV)

(ALLN.ALLN1) FIG