

FEDERAL AVIATION ADMINISTRATION
FLIGHT STANDARDS SERVICE
STANDARD TERMINAL ARRIVAL (STAR)

Bearings, headings, courses, tracks and radials are magnetic. Elevations and altitudes are in feet, MSL. Altitudes are minimum altitudes unless otherwise indicated.
Ceilings are in feet above airport elevation. Distances are in nautical miles. Visibilities are in statute miles or feet RVR unless otherwise indicated.

Arrival Name	Number	STAR Computer Code	Superseded Number	Dated	Effective Date
YUTES (RNAV)	ONE	YUTES.YUTES1	NONE		

TRANSITION ROUTES:

Transition Name	Transition Computer Codes	From FIX/NAVAID	To FIX/NAVAID	Course	Distance	MEA	MOCA	MAA	Crossing Altitudes / Fixes
FLECC	FLECC.YUTES1	FLECC	FLECC						
			BVL VORTAC	077.04	51.60	12000	11200		
			KNOLE	079.00	41.00	12000	10300		AT 17000
			SKWAH	079.65	10.98	12000	10300		AT/ABOVE 14000
			YUTES	079.57	04.01	12000	10300		

ARRIVAL ROUTE DESCRIPTION:

LANDING RWY 16L/R, 17: FROM YUTES ON TRACK 086.58/12.54 TO DUGGY, THEN ON TRACK 072.99/4.89 TO CROSS JAXXX AT OR ABOVE 12000, THEN ON TRACK 027.19/4.33 TO RIBSS, THEN ON TRACK 343.80/4.28 TO CROSS LAWVA AT 11000, THEN ON TRACK 346.85. EXPECT RADAR VECTORS FOR THE RNAV (RNP) Z RWY 16R APPROACH OR RADAR VECTORS TO 16L/R, RWY 17 FINAL APPROACH COURSE.

LANDING RWY 34L/R, 35: FROM YUTES ON TRACK 066.62/10.82 TO GOGGL, THEN ON TRACK 077.95/6.34 TO CROSS BUSHH AT OR ABOVE 12000, THEN ON TRACK 126.88/5.01 TO CROSS SURYP AT 11000, THEN ON TRACK 163.88. EXPECT RADAR VECTORS FOR THE RNAV (RNP) Z RWY 34L APPROACH OR RADAR VECTORS TO 34L/R, RWY 35 FINAL APPROACH COURSE.

PBN REQUIREMENT NOTES:

RNAV 1 - GPS

EQUIPMENT REQUIREMENT NOTES:

RADAR REQUIRED

PROCEDURAL DATA NOTES:

NOTE: JET AIRCRAFT ONLY

NOTE: GPS REQUIRED.

FIXES AND/OR HOLDING PATTERNS:

CHART HOLDING AT FLECC: HOLD W, RT, 077.04 INBOUND, 10 NM LEGS.

CHART HOLDING AT YUTES: HOLD W, LT, 079.58 INBOUND, 10 NM LEGS.

CHART HOLDING AT KNOLE: HOLD W, RT, 079.58 INBOUND, 10 NM LEGS.

CHART HOLDING AT MOINT: HOLD W, RT, 085.61 INBOUND, 7 NM LEGS.

CHART HOLDING AT FFU VORTAC: HOLD S, RT, 340.00 INBOUND, 7 NM LEGS.

CHART: CEEDR.

CHART: RROY.

COMMUNICATIONS:

CHART: SALT LAKE ARTCC

AIRPORTS SERVED:

AIRPORT ID
SLC

CITY
SALT LAKE CITY

STATE
UT

FEDERAL AVIATION ADMINISTRATION
FLIGHT STANDARDS SERVICE
STANDARD TERMINAL ARRIVAL (STAR)

Bearings, headings, courses, tracks and radials are magnetic. Elevations and altitudes are in feet, MSL. Altitudes are minimum altitudes unless otherwise indicated.
Ceilings are in feet above airport elevation. Distances are in nautical miles. Visibilities are in statute miles or feet RVR unless otherwise indicated.

Arrival Name	Number	STAR Computer Code	Superseded Number	Dated	Effective Date
YUTES (RNAV)	ONE	YUTES.YUTES1	NONE		

LOST COMMUNICATIONS PREFERENCES:

- LANDING NORTH: AFTER SURYP PROCEED TO CEEDR, THEN LEFT TURN TO FFU AND HOLD AT 11000.
- LANDING SOUTH: AFTER LAWVA PROCEED TO RROYY, THEN LEFT TURN TO MOINT AND HOLD AT 12000.

REMARKS:

- CLIMB IN LOST COMM DUE TO MOUNTAINOUS TERRAIN IN AREA.

ADDITIONAL FLIGHT DATA:

- DME/DME ASSESSMENT: UNSAT.
- MAG VAR: SLC 11E/2020
- CHART AT LAWVA TERMINUS: SLC LDG RWY 16L/R, 17
- CHART AT SURYP TERMINUS: SLC LDG RWY 34L/R, 35

FLIGHT INSPECTED BY:

CHRISTOPHER R VANDEVEER

ORGANIZATION:

AJF

DATE:

12/17/2024

Flight Inspected Signature:

Digitally signed by
ROBERT G HAMILTON

Dec 23, 2024

DEVELOPED BY:

Mark Whitney

SLC ARTCC

01/05/2024

Developed By Signature:

Digitally signed by
ROBERT G HAMILTON
Dec 23, 2024

APPROVED BY:

BEV BORDY

AJV-A430

Approved By Signature:

Digitally signed by
ROBERT G HAMILTON
Dec 23, 2024

CHANGES:

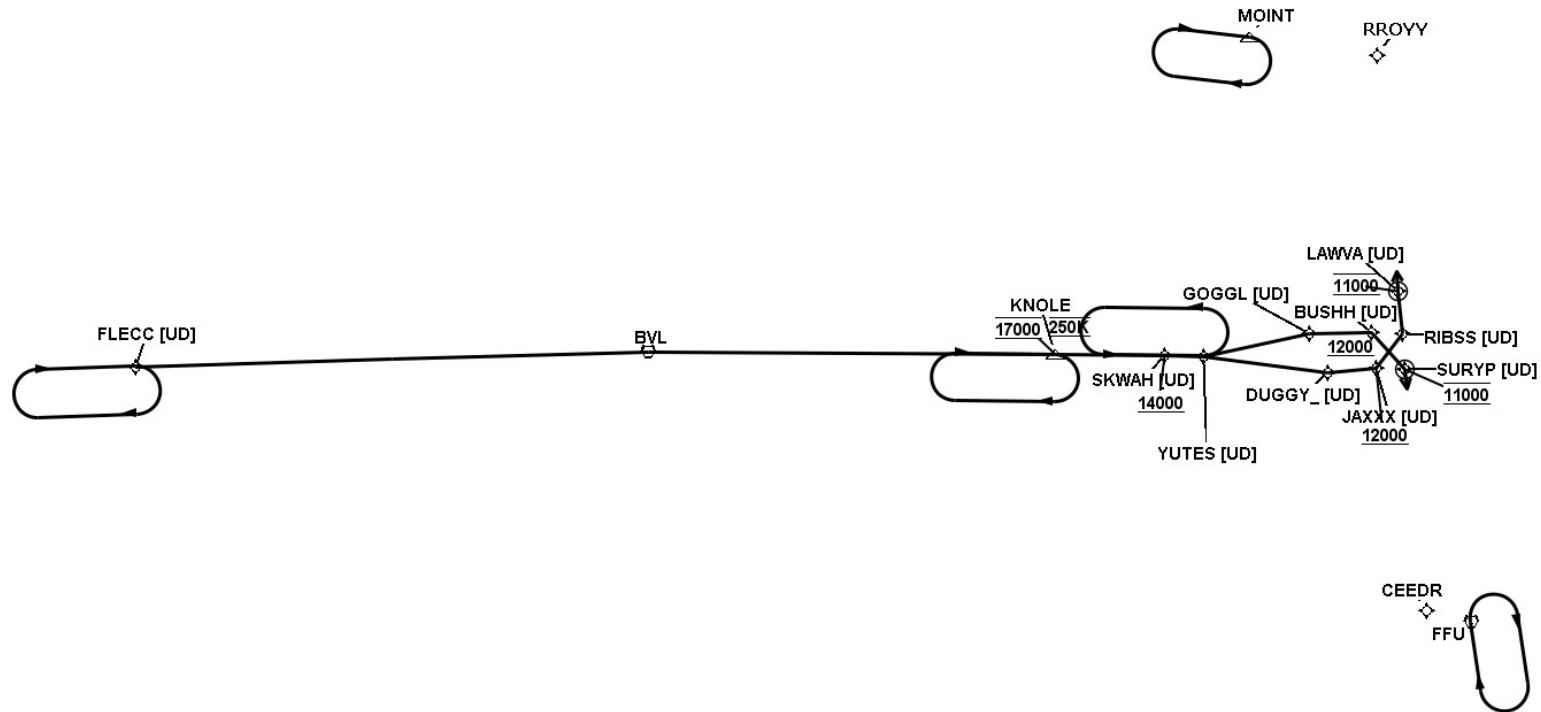
REASONS:



FEDERAL AVIATION ADMINISTRATION
FLIGHT STANDARDS SERVICE
STANDARD TERMINAL ARRIVAL (STAR)

Bearings, headings, courses, tracks and radials are magnetic. Elevations and altitudes are in feet, MSL. Altitudes are minimum altitudes unless otherwise indicated.
Ceilings are in feet above airport elevation. Distances are in nautical miles. Visibilities are in statute miles or feet RVR unless otherwise indicated.

Arrival Name	Number	STAR Computer Code	Superseded Number	Dated	Effective Date
YUTES (RNAV)	ONE	YUTES.YUTES1	NONE		
Graphic Depiction 1					



FEDERAL AVIATION ADMINISTRATION
FLIGHT STANDARDS SERVICE
STAR (DATA RECORD)

Arrival Name YUTES (RNAV)	Number ONE		STAR Computer Code YUTES.YUTES1		Superseded Number NONE		Dated	Effective Date	
<u>FIX/NAVAID</u>	<u>LAT/LONG</u>	<u>C</u>	<u>FO/FB</u>	<u>LEG TYPE</u>	<u>TC</u>	<u>DIST (NM)</u>	<u>ALTITUDE</u>	<u>SPEED</u>	<u>REMARKS</u>
En Route Transition									
FLECC	404207.83N / 1145316.21W	Y		IF					FLECC.YUTES1
BVL VORTAC	404333.95N / 1134526.70W	Y	FB	TF	088.04	51.60			
KNOLE	404321.37N / 1125131.15W	Y	FB	TF	090.00	41.00	AT 17000	AT 250K	
SKWAH	404313.00N / 1123704.48W	Y	FB	TF	090.65	10.98	AT/ABOVE 14000		
YUTES	404310.50N / 1123148.39W	Y	FB	TF	090.57	04.01			
Runway Transition									
YUTES	404310.50N / 1123148.39W	Y		IF					
DUGGY	404130.00N / 1121528.13W	Y	FB	TF	097.58	12.54			
JAXXX	404200.61N / 1120904.13W	Y	FB	TF	083.99	04.89	AT/ABOVE 12000		
RIBSS	404524.81N / 1120532.80W	Y	FB	TF	038.19	04.33			
LAWVA	404940.43N / 1120603.40W	Y	FO	TF	354.80	04.28	AT 11000		
KSLC:RWY 16L,RWY 16R,RWY 17				FM	357.85				
Runway Transition									
YUTES	404310.50N / 1123148.39W	Y		IF					
GOGGL	404528.87N / 1121754.11W	Y	FB	TF	077.62	10.82			
BUSHH	404535.56N / 1120933.46W	Y	FB	TF	088.95	06.34	AT/ABOVE 12000		
SURYP	404152.31N / 1120508.31W	Y	FO	TF	137.88	05.01	AT 11000		
KSLC:RWY 34L,RWY 34R,RWY 35				FM	174.88				