

Flight Procedures Cover Page	Task Action: P-NOTAM	Task Type: IAP	Estimated Chart Date: 05/16/2024	APWS Task ID: 910280E61DC24AA6B84FFB5650051485	APWS Project ID: 47DB3EF14AA244678E00B7F35E74647D
Procedure: LOC RWY 2 AMDT 1C		Enroute: NO	Specialist: Feronti, Tia		Agreement Number:
Airport ID: KASX			Airport City: ASHLAND		State: WI
Facility ID:	Facility Type:	Flight Inspection Remark Type:			

Procedure Comments:

PROCESSED IAW TECHNICAL SUPPORT GROUP (AJF-17) MEMO DATED 07/07/2021 GUIDANCE FOR PROCEDURAL CHANGES REQUIRING FLIGHT INSPECTION/VALIDATION.

CANCELS NOTAM 3/0842.

MSA DOCUMENTED AS 30NM IN ERROR ON 8260-5; CHANGE TO 37NM PER WAIVER.

CONTACT DAVID DANNER, AVN-A421, 405-954-5077.



OLD

ASHLAND, WISCONSIN

AL-5383 (FAA)

23222

LOC/DME I-ASX 109.3 Chan 30	APP CRS 023°	Rwy Idg TDZE Apt Elev 5197 826 827
---	------------------------	--

LOC RWY 2

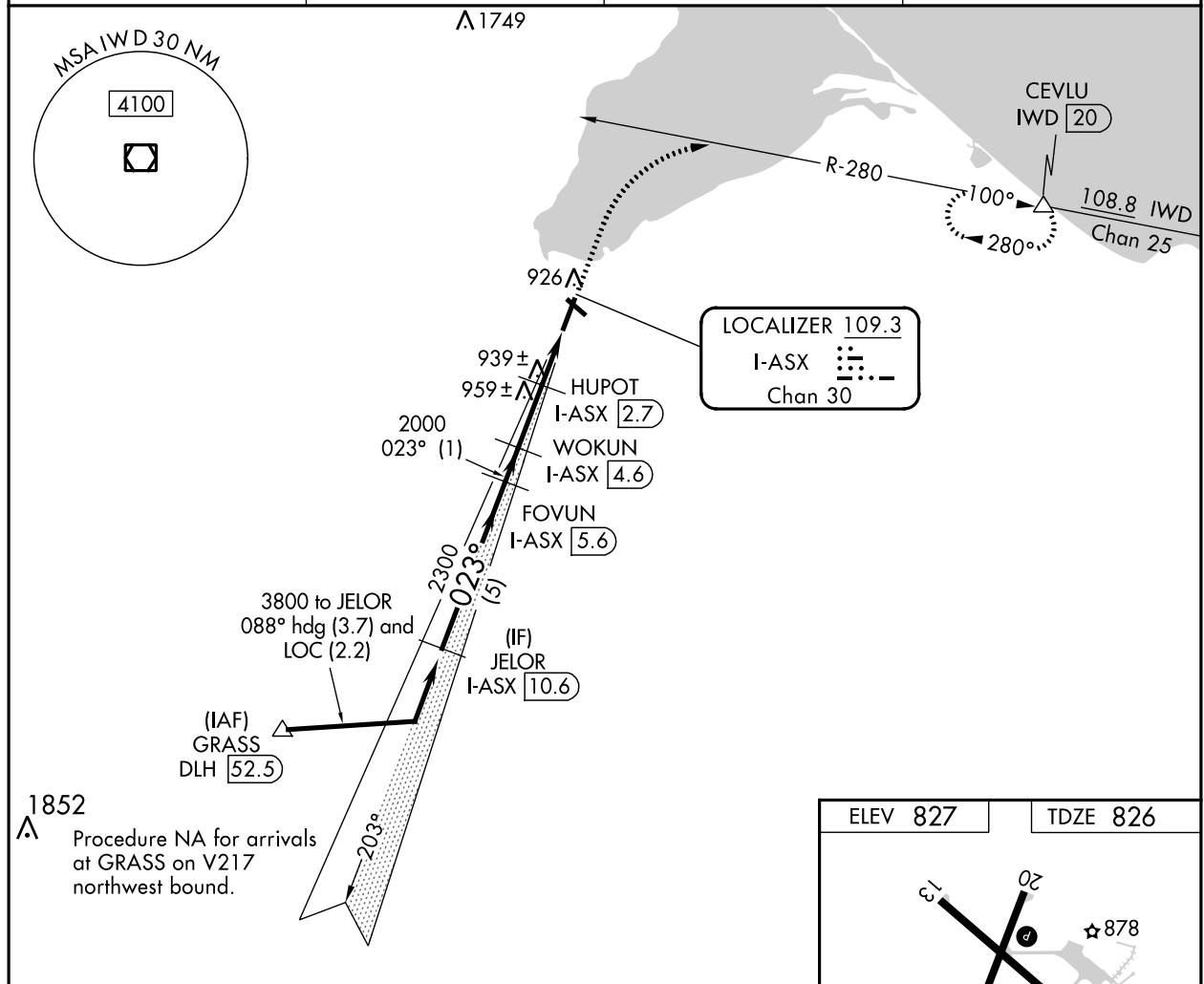
JOHN F KENNEDY MEML (ASX)

DME required.

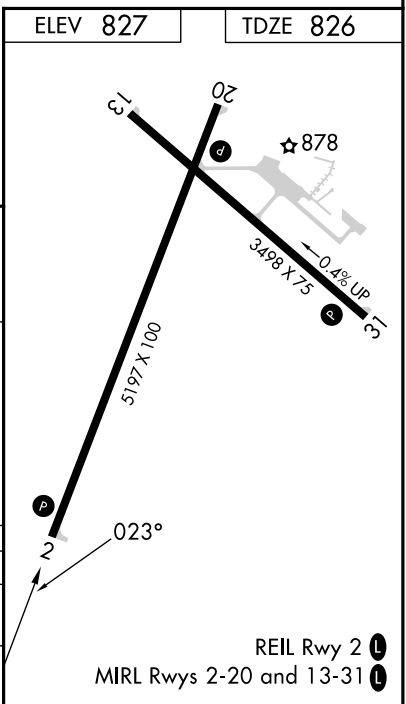
▼ NA Rwy 2 helicopter visibility reduction below 3/4 SM NA. VDP NA when using Ironwood altimeter setting. When local altimeter setting not received, use Ironwood altimeter setting and increase all MDA 140 feet; increase S-02 Cat C/D visibility 3/8 SM and Circling Cat C/D visibility 1/2 SM.

MISSED APPROACH: Climb to 2200 then climbing right turn to 3500 on IWD VOR/DME R-280 to CEVLU/IWD 20 DME and hold.

ASOS 126.775	MINNEAPOLIS CENTER 126.45 276.4	GCO 122.25	UNICOM 122.8 (CTAF)
------------------------	---	----------------------	-------------------------------



	JELOR I-ASX 10.6	FOVUN I-ASX 5.6	WOKUN I-ASX 4.6	HUPOT I-ASX 2.7	CEVLU IWD R-280
	3800	2300	2000	1400	
	5 NM	1 NM	1.9 NM	0.6 NM	1.1 NM
CATEGORY	A	B	C	D	
S-2	1200-1	374 (400-1)	1200-1 1/8	374 (400-1 1/8)	
CIRCLING	1240-1 413 (500-1)	1280-1 453 (500-1)	1440-1 3/4 613 (700-1 3/4)	1560-2 1/4 733 (800-2 1/4)	



EC-3, 02 NOV 2023 to 30 NOV 2023

EC-3, 02 NOV 2023 to 30 NOV 2023

ASHLAND, WISCONSIN
Amdt 1B 08NOV18

46°33'N-90°55'W

JOHN F KENNEDY MEML (ASX)
LOC RWY 2

OLD