

WAAS CH 45549 W16C	APP CRS 163°	Rwy ldg 6000 TDZE 581 APT Elev 607
--------------------------	------------------------	---

RNAV (GPS) X RWY 16R

SEATTLE PAINE FLD INTL (KPAE)

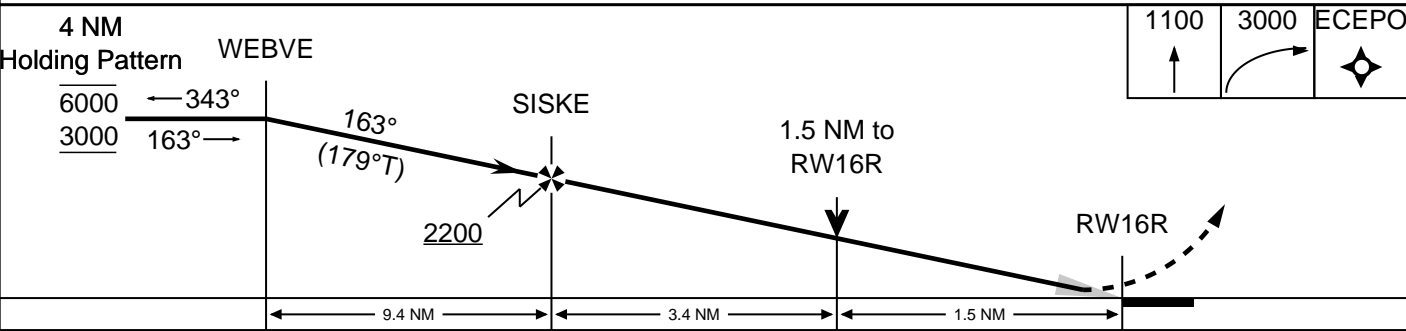
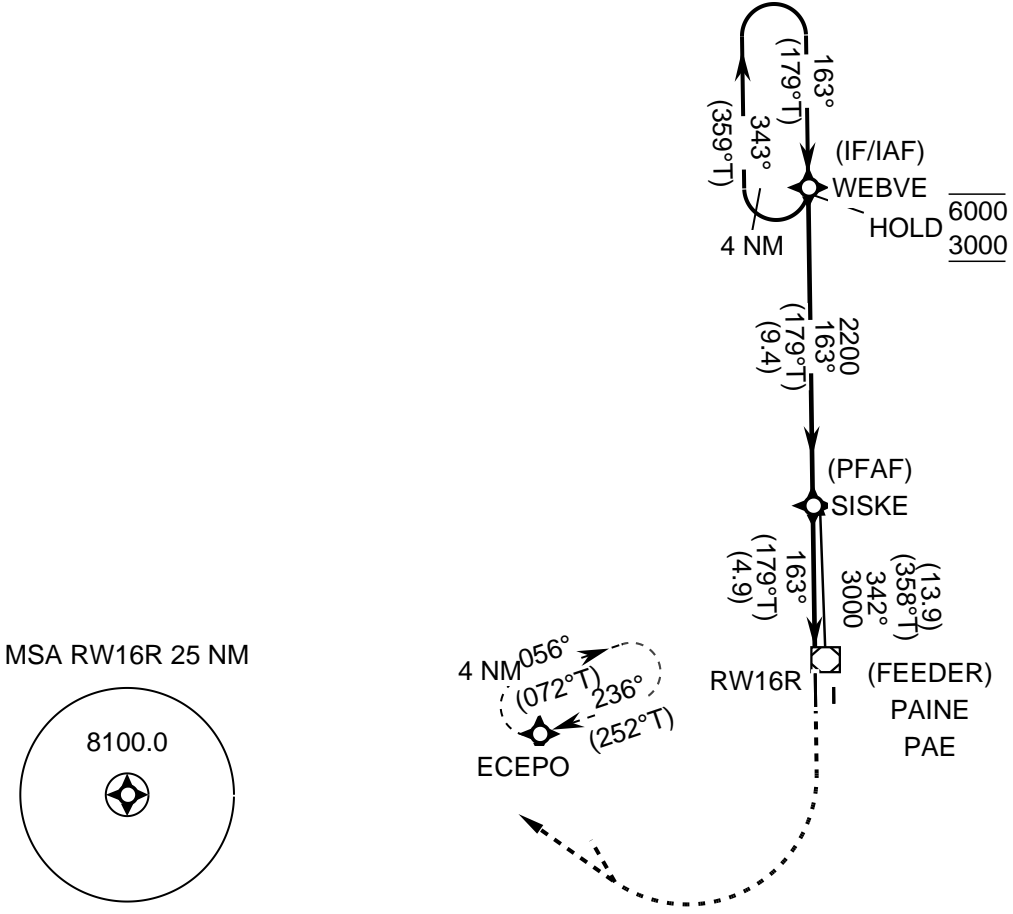
RNP APCH - GPS.

FOR UNCOMPENSATED BARO-VNAV SYSTEMS, LNAV/VNAV NA BELOW -16°C OR ABOVE 54°C. BARO-VNAV AND VDP NA WHEN USING SEA ALTIMETER SETTING. WHEN LOCAL ALTIMETER SETTING NOT RECEIVED, USE SEA ALTIMETER SETTING AND INCREASE LPV DA TO 924 FEET AND ALL VISIBILITIES TO RVR 5500 INCREASE LNAV/VNAV DA TO 1090 FEET AND ALL VISIBILITIES 1/8 SM. INCREASE ALL MDAS 100 FEET AND LNAV VISIBILITY CAT C/D 1/4 SM, AND CIRCLING VISIBILITY CAT C 1/4 SM.

MISSED APPROACH: CLIMB TO 1100 THEN CLIMBING RIGHT TURN TO 3000 DIRECT ECEPO AND HOLD, CONTINUE CLIMB-IN-HOLD TO 6000.

ATIS 128.65	SEATTLE APP CON 128.5 306.9	UNICOM 122.950
------------------------------	--	---------------------------------

PROTOTYPE-NOT FOR NAVIGATION



CATEGORY	A	B	C	D
LPV	836-4000 255			
LNAV/VNAV	1002-1 1/4 421			
LNAV	1120-5500 539		1120-1 1/2 539	
CIRCLING	1120-1 513		1120-1 1/2 513	1160-2 553