

Flight Procedures Cover Page	Task Action: Abbreviated Amendment	Task Type: IAP	Estimated Chart Date: 04/17/2025	APWS Task ID: 91C15AD836884DE48A78CDCDFD0B929F	APWS Project ID: AD9A67B8E48D47A78BF533092ECC03D3
Procedure: ILS OR LOC RWY 9 AMDT 5B		Enroute: NO	Specialist: Hill, Phillip		Agreement Number:
Airport ID: KFXE			Airport City: FORT LAUDERDALE		State: FL
Facility ID: FXE	Facility Type: ILS	Flight Inspection Remark Type:			

Procedure Comments:

ACTIVE AIRNAV DATA USED FOR KFXE AIRPORT AND RUNWAY.

REMOVE PHK FIX MAKE-UP FROM IF/IAF ENVER.

PROCESSED IAW TECHNICAL SUPPORT GROUP (AJF-17) MEMO DATED 07/07/2021, SUBJECT: GUIDANCE FOR PROCEDURAL CHANGES REQUIRING FLIGHT INSPECTION/VALIDATION.

CONTACT ROBERT HAMILTON: AJV-433 405-954-4608.



OLD

FORT LAUDERDALE, FLORIDA

AL-5942 (FAA)

24081

LOC I-FXE 111.1	APP CRS 091°	Rwy Idg 6002
		TDZE 13
		Apt Elev 13

ILS or LOC RWY 9

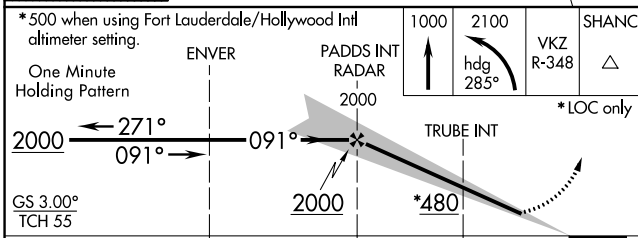
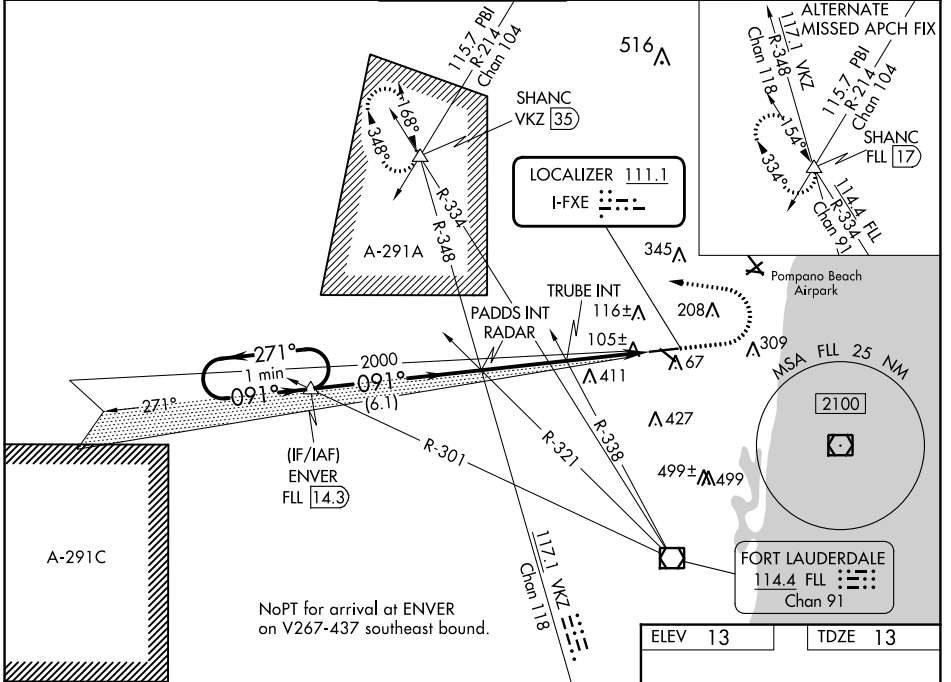
FORT LAUDERDALE EXEC (FXE)

⚠ When local altimeter setting not received, use Fort Lauderdale/Hollywood Intl altimeter setting and increase S-ILS 9 DA to 231 and increase all MDA 20 feet.

MALSR
AS

MISSED APPROACH: Climb to 1000 then climbing left turn to 2100 on heading 285° and on VKZ VOR/DME R-348 to SHANC INT/VKZ 35 DME and hold.

ATIS 119.85	MIAMI APP CON 119.7 306.3	EXECUTIVE TOWER 120.9 239.3	GND CON 121.75	CLNC DEL 127.95
-----------------------	-------------------------------------	--	--------------------------	---------------------------



CATEGORY	A	B	C	D
S-ILS 9	213-½ 200 (200-½)			
S-LOC 9	480-½ 467 (500-½) 480-1 467 (500-1)			
C CIRCLING	520-1 507 (600-1)	620-1 607 (700-1)	780-2¼ 767 (800-2¼)	780-2½ 767 (800-2½)
TRUBE FIX MINIMUMS (DUAL VOR RECEIVERS REQUIRED)				
S-LOC 9	360-½ 347 (400-½)		360-¾ 347 (400-¾)	
C CIRCLING	520-1 507 (600-1)	620-1 607 (700-1)	780-2¼ 767 (800-2¼)	780-2½ 767 (800-2½)

ELEV 13	TDZE 13
---------	---------

REIL Rwy 13, 27 and 31
HIRL Rwy 9-27
MIRL Rwy 13-31

FAF to MAP 6.1 NM

Knots	60	90	120	150	180
Min:Sec	6:06	4:04	3:03	2:26	2:02

SE-3, 11 JUL 2024 to 08 AUG 2024

SE-3, 11 JUL 2024 to 08 AUG 2024

FORT LAUDERDALE, FLORIDA
Amdt 5A 05FEB15

26°12'N-80°10'W

FORT LAUDERDALE EXEC (FXE)

ILS or LOC RWY 9