

Flight Procedures Cover Page	Task Action: Cancellation	Task Type: STAR	Estimated Chart Date: 03/19/2026	APWS Task ID: 91F6C7A81B27477FB9867D743BF4FE64	APWS Project ID: A05EE60C287142B5AD95ABEC8F222250
Procedure: STAR RIDES TWO (RNAV) ORLANDO FL KMCO		Enroute: YES	Specialist: Martinez, Rafael		Agreement Number:
Airport ID: KMCO			Airport City: ORLANDO		State: FL
Facility ID:	Facility Type:	Flight Inspection Remark Type:			

Procedure Comments:

CANCELLED RIDES TWO: ENROUTE TRANSITIONS TO BE USED IN NEW STAR MUNGI.

CONTACT: BEV L BORDY 405-954-8293/CASIMIR TABAKA 405-954-7931.

11/21/2025



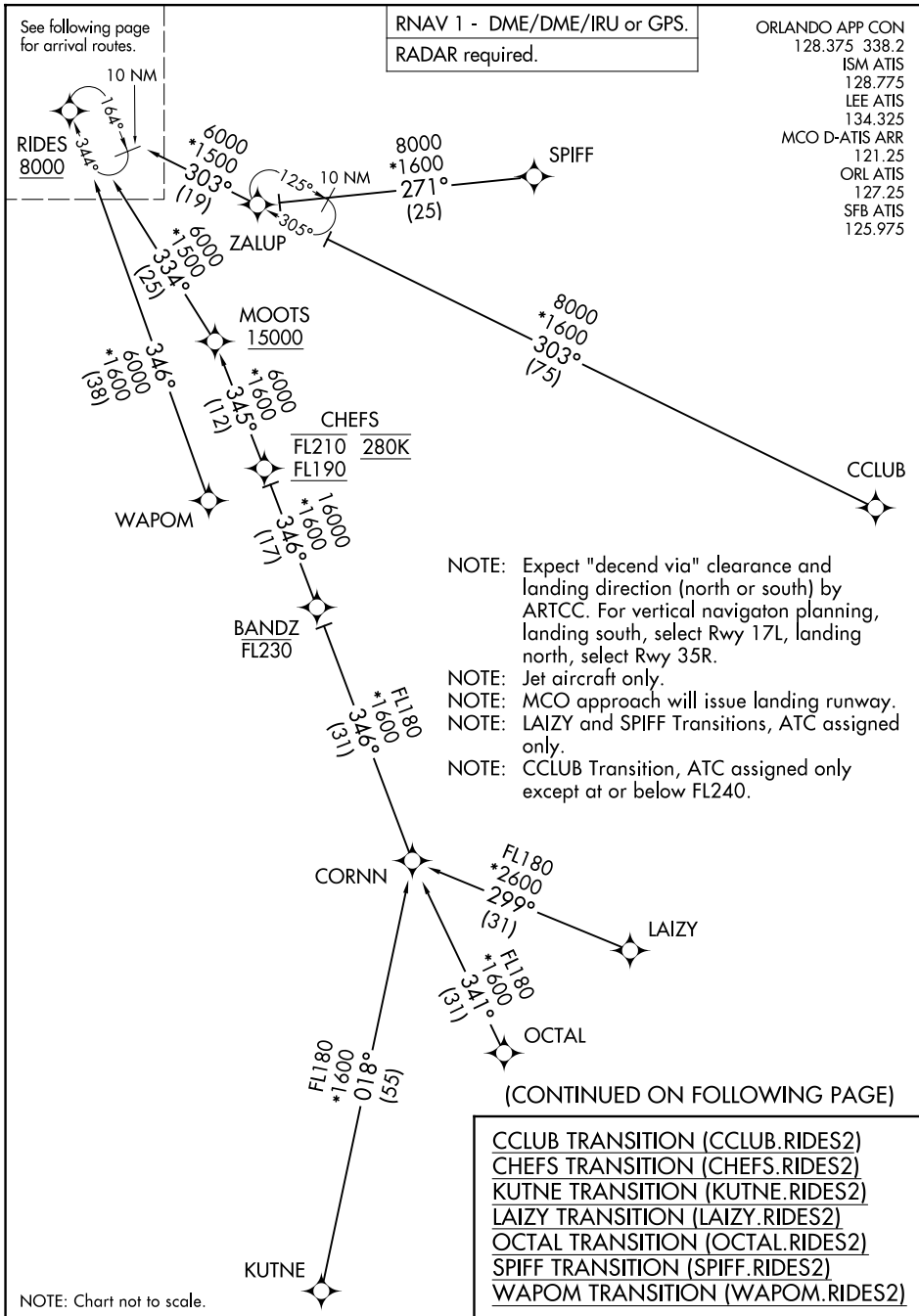
CANCEL

AL-571 (FAA)

(RIDES.RIDES2) 22139

RIDES TWO ARRIVAL (RNAV) Transition Routes

ORLANDO, FLORIDA



SE-3, 04 SEP 2025 to 02 OCT 2025

SE-3, 04 SEP 2025 to 02 OCT 2025

RIDES TWO ARRIVAL (RNAV) Transition Routes

ORLANDO, FLORIDA

(RIDES.RIDES2) 19MAY22

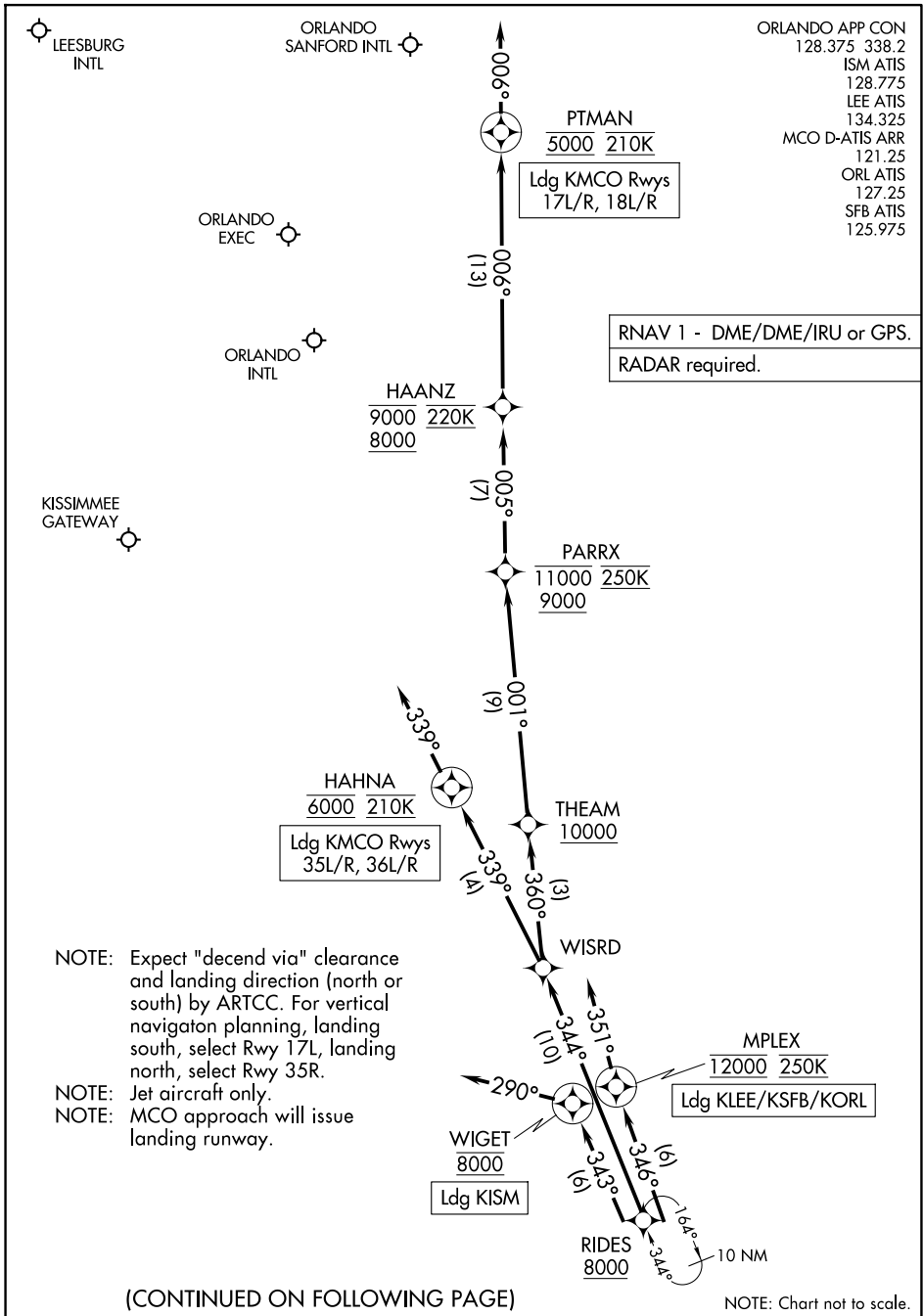
CANCEL

AL-571 (FAA)

(RIDES.RIDES2) 25219

RIDES TWO ARRIVAL (RNAV) Arrival Routes

ORLANDO, FLORIDA



(CONTINUED ON FOLLOWING PAGE)

NOTE: Chart not to scale.

RIDES TWO ARRIVAL (RNAV) Arrival Routes

ORLANDO, FLORIDA

(RIDES.RIDES2) 19MAY22

SE-3, 04 SEP 2025 to 02 OCT 2025

SE-3, 04 SEP 2025 to 02 OCT 2025

CANCEL

AL-571 (FAA)

(RIDES.RIDES2) 22139

RIDES TWO ARRIVAL (RNAV)

ORLANDO, FLORIDA

ARRIVAL ROUTE DESCRIPTION

KMCO: From RIDES on track 344° to WISRD.

LANDING KMCO RUNWAYS 17L/R, 18L/R: From WISRD on track 360° to cross THEAM at or above 10000, then on track 001° to cross PARRX between 9000 and 11000 and at 250K, then on track 005° to cross HAANZ between 8000 and 9000 and at 220K, then on track 006° to cross PTMAN at 5000 and at 210K, then on track 006°. Expect RADAR vectors to final approach course.

LANDING KMCO RUNWAYS 35L/R, 36L/R: From WISRD on track 339° to cross HAHNA at 6000 and at 210K, then on track 339°. Expect ILS or RNAV Rwy 35R approach or RADAR vectors to final approach course.

LANDING KISM: From RIDES on track 343° to cross WIGET at 8000, then on heading 290°. Expect RADAR vectors to final approach course.

LANDING KLEE/KSFB/KORL: From RIDES on track 346° to cross MPLEX at 12000 and at 250K, then on heading 351°. Expect RADAR vectors to final approach course.

SE-3, 04 SEP 2025 to 02 OCT 2025

SE-3, 04 SEP 2025 to 02 OCT 2025

RIDES TWO ARRIVAL (RNAV)

ORLANDO, FLORIDA

(RIDES.RIDES2) 19MAY22