

Flight Procedures Cover Page	Task Action: FLIGHT CHECK	Task Type: SID	Estimated Chart Date: 03/21/2024	APWS Task ID: 9299B527C5AA4FF5BE17A89FE2BF335E	APWS Project ID: 1D960267CA254B41BECED55A28FF5655
Procedure: SID KWEEN (RNAV) FIVE ALBEMARLE NC KUUJ		Enroute: YES	Specialist: Vega, Ana		Agreement Number:
Airport ID: KUUJ			Airport City: ALBEMARLE		State: NC
Facility ID:	Facility Type:	Flight Inspection Remark Type: New FC Slot			
<div>Procedure Comments: ACTIVE DATA USED.</div> <div>ABBREVIATED AMENDMENT.</div> <div>CANCEL FDC 3/0577 - KUUJ RWY 04R UPDATED TAKEOFF MINIMUMS.</div> <div>CANCEL CLT 05/427 - KCLT RWY 05/23 PERMANENT CLOSURE.</div> <div>CONTACT: MARK ADAMS TEAM 1 SUBTEAM-B 405-954-9946.</div> <div>9/20/23: THIS IS AN UPDATED COPY OF THE FORM DEVELOPED ON 1/6/23 8260-15B FORM - CHANGED MOCA VALUE ON TRANSITION ROUTE: PITRW: UNJAM – TASTY FROM “1800” TO “3100” AND TASTY – PITRW FROM “1500” TO “2300”.</div> <div><div>QUALITY 20 CHECKED</div><div>Digitally signed by <b>MARK D ADAMS</b> Nov 07, 2023</div><div><div>QUALITY 9 CHECKED</div><div>BEGUE</div></div></div>					

<b>FIPC DME/DME FORM</b>								
<b>PROCEDURE:</b> SID KWEEN (RNAV) FIVE ALBEMARLE NC KVVJ			<b>AIRPORT NAME:</b> STANLY COUNTY		<b>AIRPORT ID:</b> KVVJ	<b>SPECIAL CONTROL NO:</b> AG-11-204-23		
<b>FAC ID:</b> KWEEN5		<b>CITY:</b> ALBEMARLE			<b>ST:</b> NC	<b>ORIG CHART DATE:</b> 03/21/2024		
<b>DFL TYPE:</b> PROC/D	<b>THIRD PARTY:</b> <input type="checkbox"/> YES	<b>EST. TIME ON SITE:</b> 1.0	<b>REIMB. NUMBER:</b>		<b>PTS TASK ID:</b> 9299B527C5AA4FF5BE17A89FE2BF335E			
<b>PREFLIGHT NOTES</b>								
<b>REVIEWER:</b>					<b>DATE:</b>			
<b>COMMENTS:</b>					<b>CHECK ONE:</b> <input type="checkbox"/> FLT CK REQ <input type="checkbox"/> NFCR <input type="checkbox"/> REJECT			
							<b>YES</b>	<b>NO</b>
					<b>CPV COMPLETE?</b>		<b>X</b>	
<b>PROCEDURE RESULTS</b>								
<b>INSPECTION DATE:</b> 01/11/2024		<b>CREW #:</b> VN526	<b>N #:</b> N80	<b>INSTRUMENT PROCEDURE STATUS:</b> <input checked="" type="checkbox"/> SAT <input type="checkbox"/> SAT W/CHANGES <input type="checkbox"/> UNSAT		<b>ARINC CODING:</b> <input type="checkbox"/> SAT <input type="checkbox"/> SAT/GOLD <input type="checkbox"/> UNSAT		
<b>FLIGHT INSPECTOR SIGNATURE:</b> eric l geyer @ 01/11/2024 16:28			<b>PRINTED NAME:</b> GEYER, ERIC LEE			<b>NOTAM INITIATED?</b> <input type="checkbox"/> YES <input checked="" type="checkbox"/> NO		
<b>FLIGHT INSPECTOR REMARKS:</b> Stanly County, Abermale, NC, SID KWEEN (RNAV) FIVE, SAT.  TAKEOFF MINIMUMS: STANLY COUNTY (KVVJ) AMENDED RWY 4R FROM "300 1 1/2 OR STANDARD WITH MINIMUM CLIMB OF 276 FT PER NM TO 1000" TO								
<b>DME/DME STATUS:</b> <input type="checkbox"/> SAT <input type="checkbox"/> UNSAT		<b>SPECIALIST SIGNATURE:</b>			<b>PRINTED NAME:</b>			
<b>SPECIALIST REMARKS:</b>								
<b>IN-FLIGHT OBSTACLE REPORT</b>								
<b>OBSTRUCTION ID #:</b>	<b>COORDINATES OR LOCATION:</b>		<b>GNSS ALTITUDE (MSL):</b>		<b>BAROMETRIC ALTITUDE (MSL):</b>		<b>HEIGHT ABOVE GROUND LEVEL:</b>	

CHARLOTTE DEP CON  
128.325 307.8  
AWOS-3  
128.175  
CLNC DEL  
121.75 254.375  
GND CON  
121.75 254.375  
STANLY COUNTY TOWER ★  
126.275 (CTAF) 291.9

RNAV 1 - DME/DME/IRU or GPS.

RADAR required.

TOP ALTITUDE:  
3000

PROTOTYPE-  
NOT FOR NAVIGATION

NEW FIG REQUESTED 10-13-23

TAKEOFF MINIMUMS

- Rwys 4L, 22R: NA - Environmental.
- Rwy 22L: Standard.
- Rwy 4R: 300-1¾ or standard with minimum climb of 315' per NM to 1000.

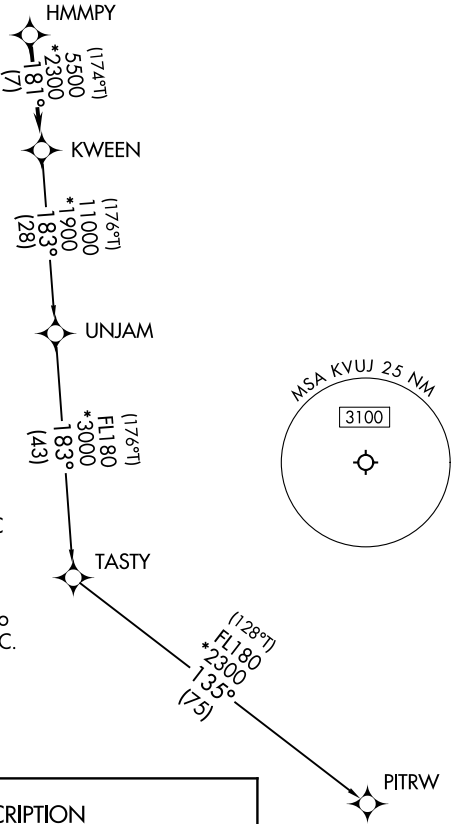
- NOTE: For turbo jets only.
- NOTE: Transponder code will be issued via PDC or Charlotte CLNC DEL.
- NOTE: If unable to accept climb rates, advise ATC on initial contact.
- NOTE: Upon reaching 10000 MSL, accelerate to and maintain 280K, if unable advise ATC.

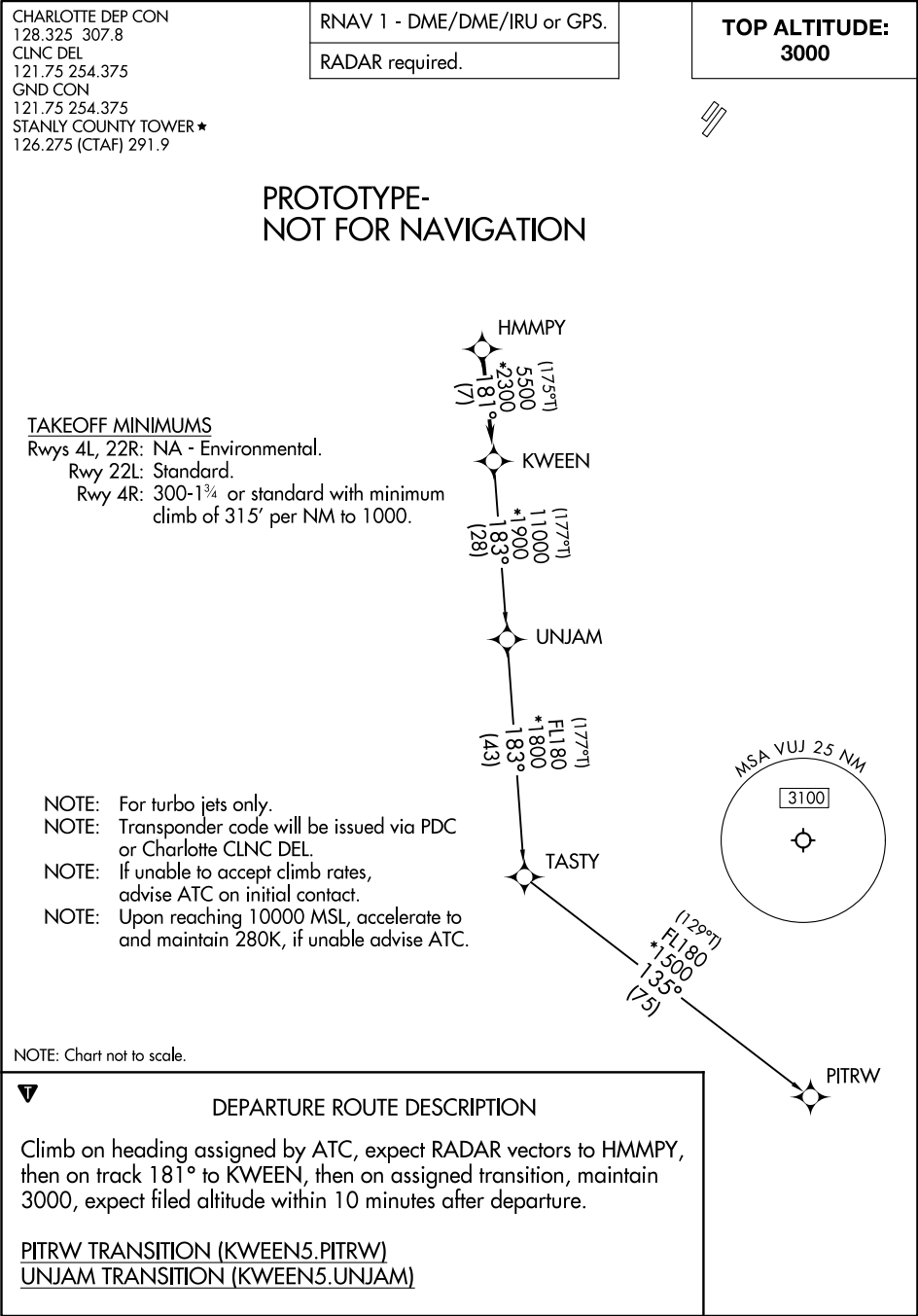
NOTE: Chart not to scale.

DEPARTURE ROUTE DESCRIPTION

Climb on heading assigned by ATC, on RADAR vectors to HMMPY, then on track 181° to KWEEN, then on assigned transition, maintain 3000, expect filed altitude within 10 minutes after departure.

PITRW TRANSITION (KWEEN5.PITRW)





(KWEEN4.KWEEN) 19003

AL-6707 (FAA)

# KWEEN FOUR DEPARTURE (RNAV)

STANLY COUNTY (VUJ)  
ALBEMARLE, NORTH CAROLINA

AWOS-3  
128.175  
CLNC DEL  
121.75 254.375  
GND CON  
121.75 254.375  
STANLY COUNTY TOWER ★  
126.275 (CTAF) 291.9  
UNICOM  
123.0  
CHARLOTTE DEP CON  
128.325 307.8

**OLD**

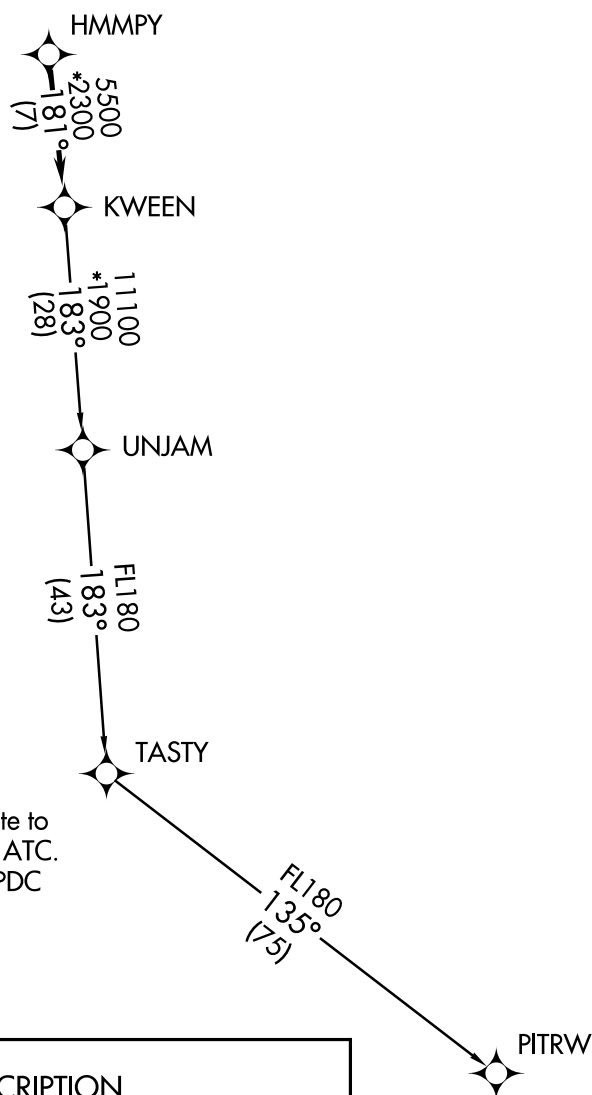
**TOP ALTITUDE:  
3000**

## TAKEOFF MINIMUMS

Rwys 4L, 22R: NA.

Rwy 22L: Standard.

Rwy 4R: 300-1½ or standard with minimum  
climb of 276' per NM to 1000.



- NOTE: For turbojets only.
- NOTE: DME/DME/IRU or GPS required.
- NOTE: RNAV 1.
- NOTE: RADAR required.
- NOTE: If unable to accept climb rates, advise ATC on initial contact.
- NOTE: Upon reaching 10000 MSL, accelerate to and maintain 280K, if unable advise ATC.
- NOTE: Transponder code will be issued via PDC or Charlotte CLNC DEL.

NOTE: Chart not to scale.



## DEPARTURE ROUTE DESCRIPTION

Climb on heading assigned by ATC, expect RADAR vectors to HMMPY, then on track 181° to KWEEN, then on assigned transition, maintain 3000, expect filed altitude within 10 minutes after departure.

PITRW TRANSITION (KWEEN4.PITRW)  
UNJAM TRANSITION (KWEEN4.UNJAM)

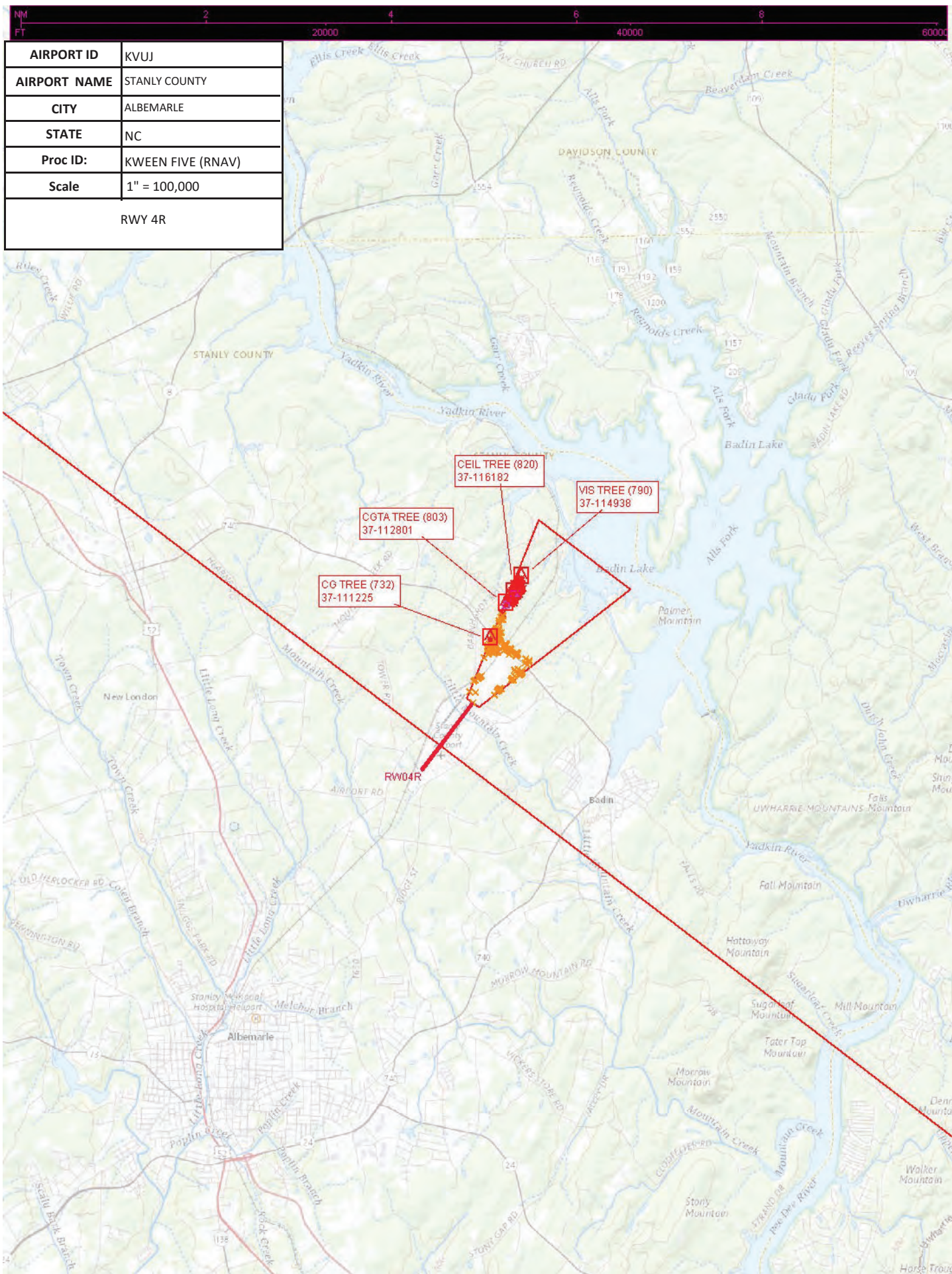
SE-2, 29 DEC 2022 to 26 JAN 2023

SE-2, 29 DEC 2022 to 26 JAN 2023

# KWEEN FOUR DEPARTURE (RNAV)

(KWEEN4.KWEEN) 03JAN19

ALBEMARLE, NORTH CAROLINA  
STANLY COUNTY (VUJ)





<b>AIRPORT ID</b>	KVUJ
<b>AIRPORT NAME</b>	STANLY COUNTY
<b>CITY</b>	ALBEMARLE
<b>STATE</b>	NC
<b>Proc ID:</b>	KWEEN FIVE (RNAV)
<b>Scale</b>	1" = 500,000
RWY 4R	





