

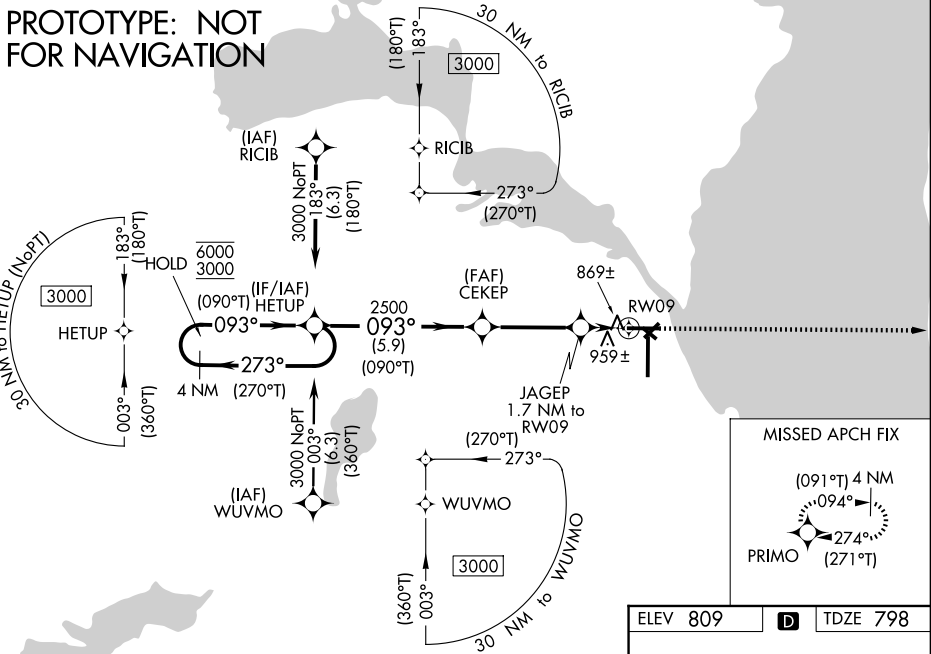
WAAS CH 86734 W09A	APP CRS 093°	Rwy Ldg TDZE Apt Elev	5648 798 809
--	------------------------	-----------------------------	---

RNAV (GPS) RWY 9

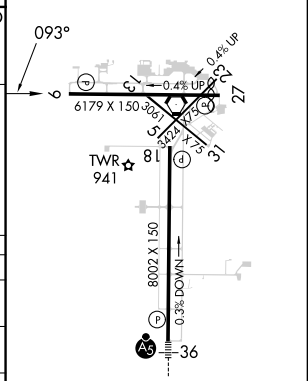
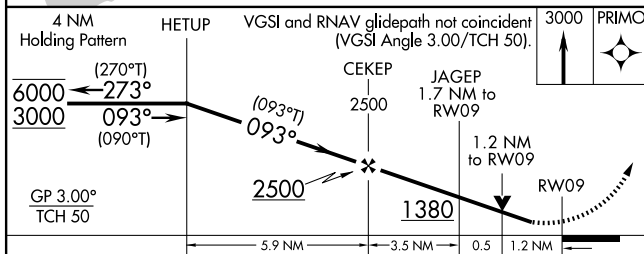
WITTMAN RGNL (OSH)

RNP APCH - GPS.		OSHKOSH TOWER ★		GND CON	UNICOM
<p>▼ Rwy 9 helicopter visibility reduction below ¾ SM NA. Circling Rwy 5, 23, 31 NA at night. For uncompensated Baro-VNAV systems, LNAV/VNAV NA below -20° C or above 54° C. VDP and Baro-VNAV NA with using FLD altimeter setting. When local altimeter setting not received, use FLD altimeter setting; increase LPV DA to 1094 feet; increase LNAV/VNAV DA to 1174 feet; increase all MDAs 40 feet and LNAV visibility Cats C and D ½ SM, and Circling visibility Cat D ¼ SM.</p>		<p>118.5(CTAF) 290.9</p>		132.3	122.95
ATIS	MILWAUKEE APP CON				
125.9	127.0 263.075				

PROTOTYPE: NOT FOR NAVIGATION



ELEV 809	D	TDZE 798
----------	----------	----------



CATEGORY	A	B	C	D
LPV DA		1061-7/8	263 (300-7/8)	
LNAV/VNAV DA		1141-1	343 (400-1)	
LNAV MDA	1220-1	422 (500-1)	1220-1¼	422 (500-1¼)
CIRCLING	1280-1 471 (500-1)	1300-1 491 (500-1)	1360-1½ 551 (600-1½)	1440-2 631 (700-2)

REIL Rwy 18 and 27
HIRL Rwy 9-27, and 18-36