

Flight Procedures Cover Page	Task Action: FLIGHT CHECK	Task Type: SID	Estimated Chart Date: 04/17/2025	APWS Task ID: 93E2D9C6299D40AFBDBCAC88E5ED8D42	APWS Project ID: F5B23552404D469585C38455E9A42BEE
Procedure: SID GARLAND SIX DECATUR TX KLUD		Enroute: YES	Specialist: Palmer, Leo		Agreement Number:
Airport ID: KLUD			Airport City: DECATUR		State: TX
Facility ID:	Facility Type:	Flight Inspection Remark Type: New FC Slot			

Procedure Comments:
KLUD PENDING AIRNAV DATA USED. - MAGVAR FROM 9E/2000 TO 3E/2025.

CONTACT MANAGER: DAVE DANNER (405)954-5077

QUALITY
20
CHECKED

QUALITY
9
CHECKED
BEGUE

FIPC BASIC FORM

PROCEDURE: SID GARLAND SIX DECATUR TX KLUD		AIRPORT NAME: DECATUR MUNI		AIRPORT ID: KLUD	SPECIAL CONTROL NO: OP-12-173-24
FAC ID: GARL6		CITY: DECATUR		ST: TX	ORIG CHART DATE: 04/17/2025
DFL TYPE: PROC/T	THIRD PARTY: <input type="checkbox"/> YES	EST. TIME ON SITE: 0.4	REIMB. NUMBER:	PTS TASK ID: 93E2D9C6299D40AFBDBCAC88E5ED8D42	

PREFLIGHT NOTES

REVIEWER:	DATE:
COMMENTS:	CHECK ONE: <input type="checkbox"/> FLT CK REQ <input type="checkbox"/> NFCR <input type="checkbox"/> REJECT
	YES NO
	CPV COMPLETE? <input checked="" type="checkbox"/> X <input type="checkbox"/>

PROCEDURE RESULTS

INSPECTION DATE: 01/22/2025	CREW #: VN330	N #: N66	INSTRUMENT PROCEDURE STATUS: <input checked="" type="checkbox"/> SAT <input type="checkbox"/> SAT W/CHANGES <input type="checkbox"/> UNSAT	ARINC CODING: <input type="checkbox"/> SAT <input type="checkbox"/> SAT/GOLD <input type="checkbox"/> UNSAT
FLIGHT INSPECTOR SIGNATURE: brian harrelson @ 01/22/2025 17:49		PRINTED NAME: HARRELSON, BRIAN DAVID		NOTAM INITIATED? <input type="checkbox"/> YES <input checked="" type="checkbox"/> NO

FLIGHT INSPECTOR REMARKS:
Complete/SAT.

IN-FLIGHT OBSTACLE REPORT

OBSTRUCTION ID #:	COORDINATES OR LOCATION:	GNSS ALTITUDE (MSL):	BAROMETRIC ALTITUDE (MSL):	HEIGHT ABOVE GROUND LEVEL:
--------------------------	---------------------------------	-----------------------------	-----------------------------------	-----------------------------------

1. FLIGHT PROCEDURE IDENTIFICATION:

DALLAS, TX
DALLAS LOVE FLD (KDAL)
GARLAND Departure

2. WAIVER REQUIRED AND APPLICABLE STANDARD:

To permit publishing three numeric Top Altitudes per named procedure. FAA Order 8260.46J paragraph 2-1-1.e.(2)(f) Charting constraints. Note: Even though a SID may serve more than one airport, a maximum of only two numerical values and one "assigned by ATC" per SID are authorized.

3. REASON FOR WAIVER (JUSTIFICATION FOR NONSTANDARD TREATMENT):

DFW Class B airspace is congested with 20 satellite airports that can feed into it. Currently, the GARLAND Departure has two numeric top altitudes charted for the procedure for DFW. D10 and Dallas Love FLD (DAL) ATC facilities request a third numeric top altitude be published for DAL RWY 13L, 13R departures to deconflict with DFW air traffic that are departing overhead the DAL departures.

4. EQUIVALENT LEVEL OF SAFETY PROVIDED:

Departures from DFW and DAL will have specific top altitudes published in the textual departure route description as well as the top altitude placard on the procedure and "maintain" will be published in the textual departure route description.

5. ALTERNATIVE ACTIONS DEEMED NOT FEASIBLE:

Allowing three numeric top altitudes will reduce pilot-controller workload and enhance air traffic deconfliction between DFW and DAL RWY 13L, 13R departures. With increased air traffic, only having two numeric top altitudes would cause undue risk to the NAS, in the form of increased controller to pilot communication issues (Readback/Hearback). It would also force an increase in workload and an increase in errors, introducing a higher level of safety risk to the system.

6. COORDINATION WITH USER ORGANIZATIONS (SPECIFY):

D10 Approach Control, Dallas-Fort Worth Intl (DFW) ATCT, and Dallas Love Field (DAL) ATCT

7. SUBMITTED BY:

DATE	OFFICE IDENTIFICATION	TITLE
08/02/23	AJV-A430	MANAGER

SIGNATURE

Digitally signed by
ERIC N SUSKI
Sep 08, 2023

8. AFS ACTIONS:

APPROVED DISAPPROVED NOT REQUIRED

COMMENTS:

DATE	ROUTING SYMBOL	SIGNATURE
------	----------------	-----------



Federal Aviation Administration

Memorandum

Date: July 16, 2023

To: Flight Technologies and Procedures Division

From: Johnnie Baker, Manager, Instrument Flight Procedures (IFP), AJV-A430

Subject: Letter of Approval Request GARLAND SID, 50F (BOURLAND FLD)

GARLAND STANDARD INSTRUMENT DEPARTURE (SID)
BOURLAND FLD, FORT WORTH, TX (50F)

Required Climb Gradient (CG) exceeds 500 feet per NM, FAAO 8260.46J, paragraph 2-1-1d(2).

Request approval for the following CG in excess of 500 feet per NM for the GARLAND SID at Bourland Fld (50F) for Runway 17:

The Runway 17 Initial Climb Area (ICA) has a surveyed 1011 FT MSL Tree (48-089021, 323407.39N/0973524.72W, (1A)), that is 2723.34 feet from the departure end of runway and 534.08 feet right of centerline. This is causing a 512 feet per NM CG to an 1100 feet MSL climb gradient termination altitude.

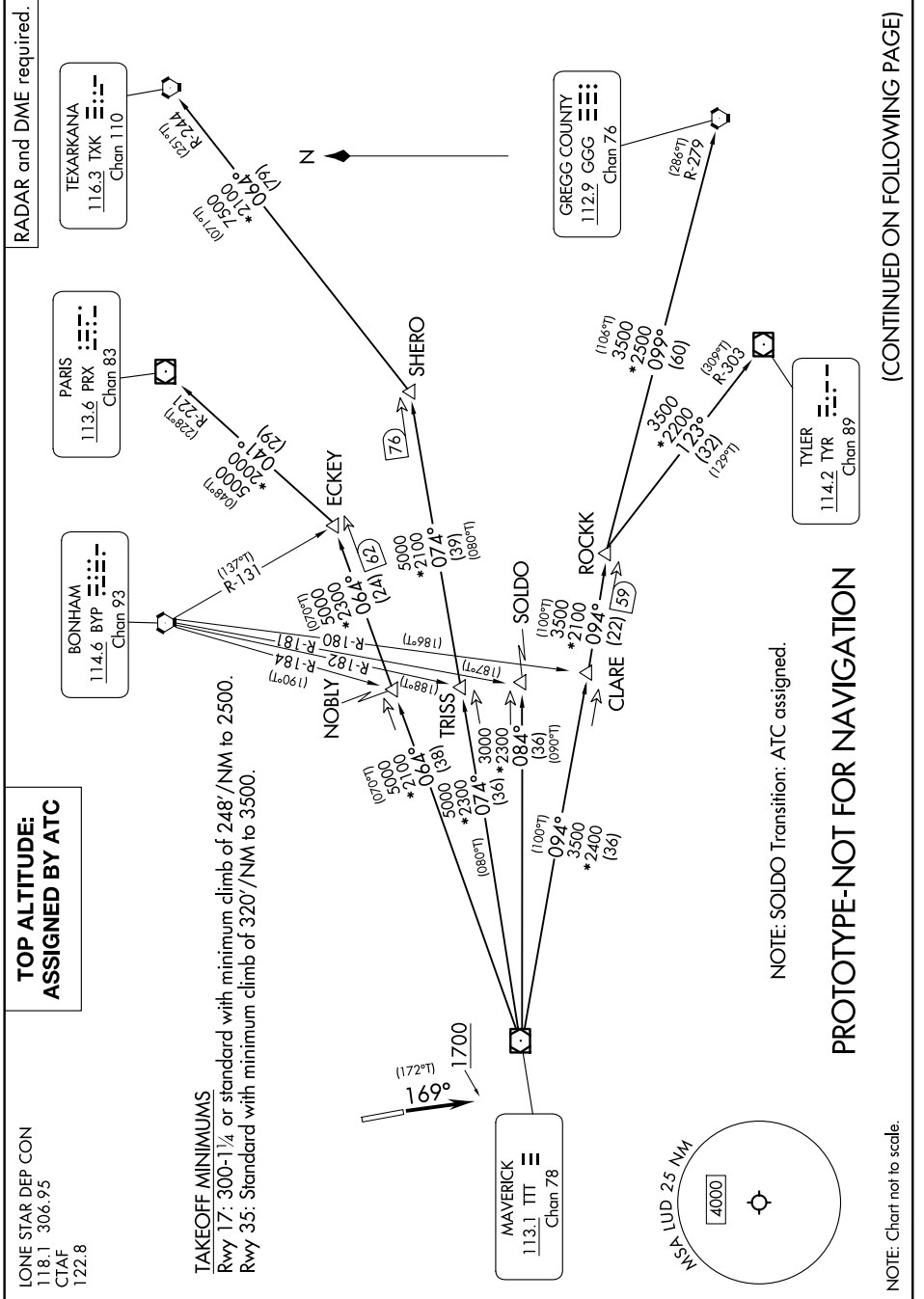
The 50F Textual ODP has an Approval Letter to publish a 512 FT/NM to 1300 feet MSL. Having the SID CGTA lower than the Textual ODP CGTA may induce confusion of pilots. Keeping the CGTAs the same will standardize procedures and reduce confusion.

Request to publish the following Takeoff Minimums:

Rwy 17: 300-2 or standard with minimum climb of 512 FT/NM to 1300.

GARLAND SIX DEPARTURE

DECATUR, TEXAS



(CONTINUED ON FOLLOWING PAGE)

PROTOTYPE-NOT FOR NAVIGATION

GARLAND SIX DEPARTURE



DEPARTURE ROUTE DESCRIPTION

TAKEOFF RUNWAY 17: Climb on heading 169° to 1700 before proceeding north.

When entering controlled airspace, fly assigned heading for RADAR vectors to appropriate route. Maintain ATC assigned altitude.

GREGG COUNTY TRANSITION (GARL6.GGG): From over TTT VOR/DME on TTT R-094 to ROCKK, then on GGG R-279 to GGG VORTAC.

PARIS TRANSITION (GARL6.PRX): From over TTT VOR/DME on TTT R-064 to ECKEY, then on PRX R-221 to PRX VOR/DME.

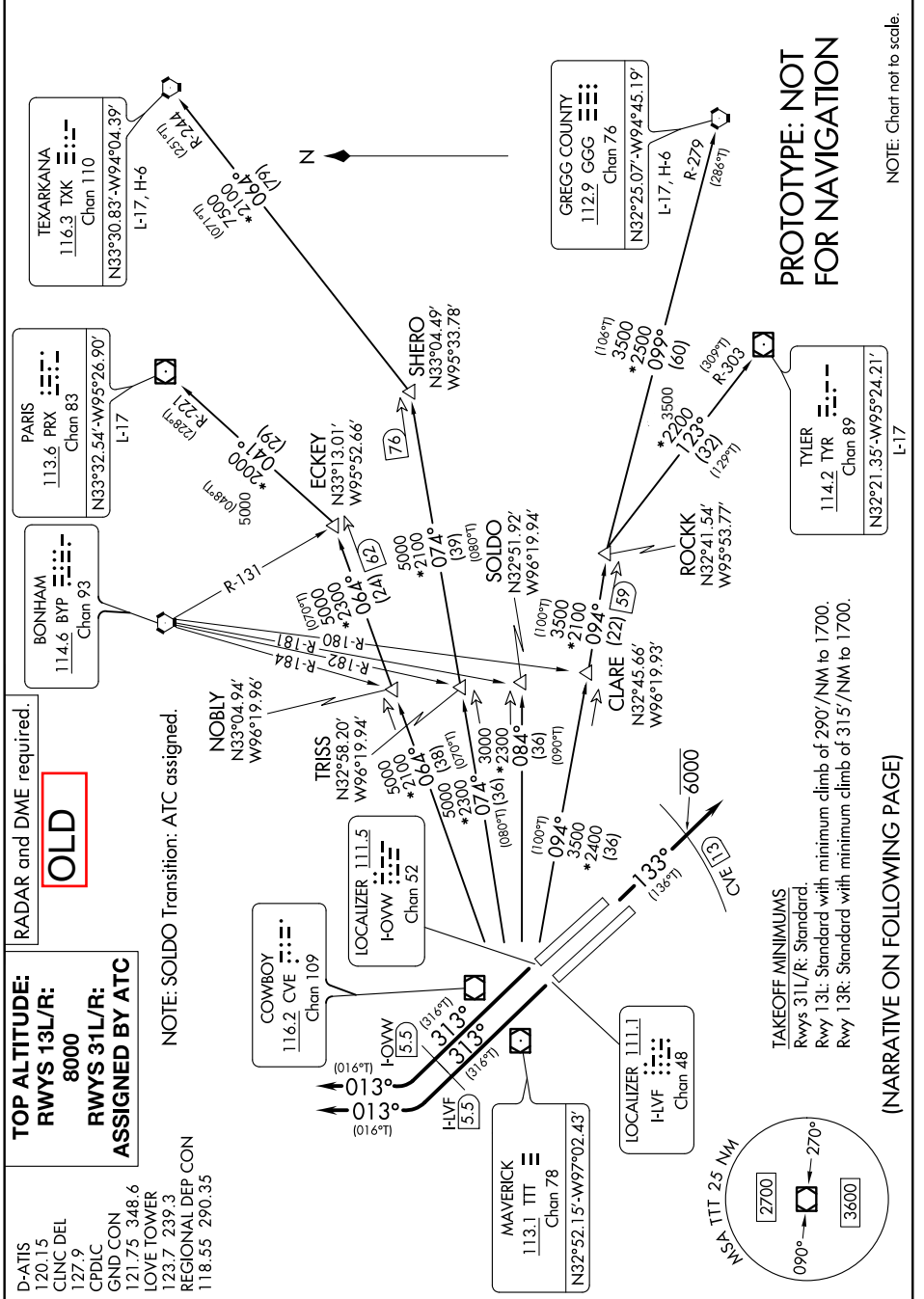
SOLDO TRANSITION (GARL6.SOLDO): From over TTT VOR/DME on TTT R-084 to SOLDO.

TEXARKANA TRANSITION (GARL6.TXK): From over TTT VOR/DME on TTT R-074 to SHERO, then on TXK R-244 to TXK VORTAC.

TYLER TRANSITION (GARL6.TYR): From over TTT VOR/DME on TTT R-094 to ROCKK, then on TYR R-303 to TYR VOR/DME.

PROTOTYPE-NOT FOR NAVIGATION

GARLAND FIVE DEPARTURE



PROTOTYPE: NOT FOR NAVIGATION

NOTE: Chart not to scale.

GARLAND FIVE DEPARTURE



DEPARTURE ROUTE DESCRIPTION

JETS:

TAKEOFF RUNWAYS 13L/R: Climb on heading 133°, cross CVE 13 DME at or below 6000, then maintain 8000 for RADAR vectors to appropriate route and expect filed altitude 10 minutes after departure.

TAKEOFF RUNWAYS 31L/R: Climb on heading 313° until the I-LVF 5.5 DME or I-OVW 5.5 DME, then right turn heading 013° for RADAR vectors to appropriate route, maintain ATC assigned altitude and expect filed altitude 10 minutes after departure.

GREGG COUNTY TRANSITION (GARL5.GGG): From over TTT VOR/DME on TTT R-094 to ROCKK, then on GGG R-279 to GGG VORTAC.

PARIS TRANSITION (GARL5.PRX): From over TTT VOR/DME on TTT R-064 to ECKEY, then on PRX R-221 to PRX VOR/DME.

SOLDO TRANSITION (GARL5.SOLDO): From over TTT VOR/DME on TTT R-084 to SOLDO.

TEXARKANA TRANSITION (GARL5.TXK): From over TTT VOR/DME on TTT R-074 to SHERO, then on TXK R-244 to TXK VORTAC.

TYLER TRANSITION (GARL5.TYR): From over TTT VOR/DME on TTT R-094 to ROCKK, then on TYR R-303 to TYR VOR/DME.

PROTOTYPE: NOT FOR NAVIGATION