



Flight Procedures Cover Page	Task Action: P-NOTAM	Task Type: IAP	Estimated Chart Date: 05/14/2026	APWS Task ID: 9536890224F54DA59D62739A96648407	APWS Project ID: 024D9ABEBF344824BF102C270CE798A0
Procedure: LOC BC RWY 30 AMDT 12B		Enroute: NO	Specialist: Burchell, Brandon		Agreement Number:
Airport ID: KALO			Airport City: WATERLOO		State: IA
Facility ID: ALO	Facility Type: VOR_DME	Flight Inspection Remark Type:			
<p>Procedure Comments:</p> <p>Clear T-NOTAM 5/6947. MSA FROM ALO VOR/DME BEARING 180 CW 360 2800.</p> <p>PROCESSED IAW TECHNICAL SUPPORT GROUP (AJF-17) MEMO DATED 07/07/2021 GUIDANCE FOR PROCEDURAL CHANGES REQUIRING FLIGHT INSPECTION/VALIDATION.</p> <p>POC: KYLE THOMPSON, AJV A33, 405-954-2135.</p>					
				 	

LOC/DME I-ALO 111.7 Chan 54	APP CRS 308°	Rwy Ldg TDZE Apt Elev	8399 868 873
---	------------------------	-----------------------------	---

old

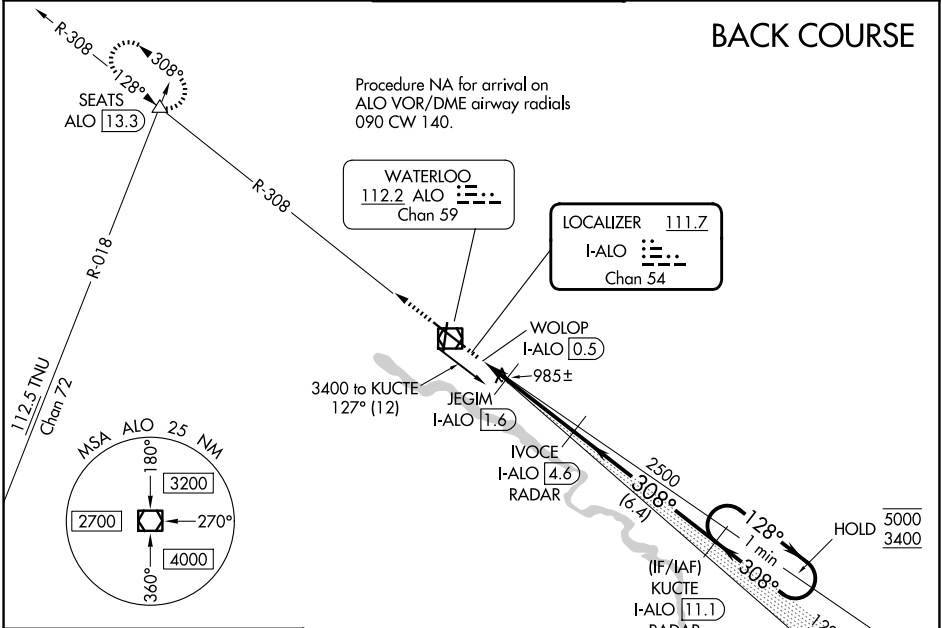
LOC BC RWY 30

WATERLOO RGNL (A.LO)

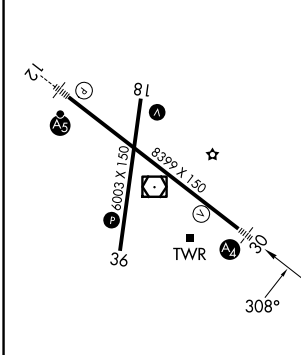
DME required.		MALS	MISSED APPROACH: Climb to 3500 on ALO VOR/DME R-308 to SEATS INT/ALO 13.3 DME and hold.		

ATIS 120.65	DES MOINES APP CON ★ 118.9 251.15	WATERLOO TOWER ★ 125.075 (CTAF) 257.8	GND CON 121.9 269.1	UNICOM 122.95
-----------------------	---	---	-------------------------------	-------------------------

BACK COURSE

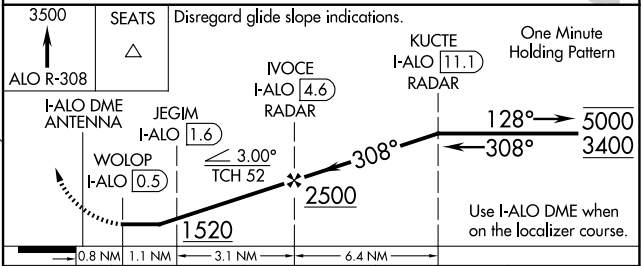
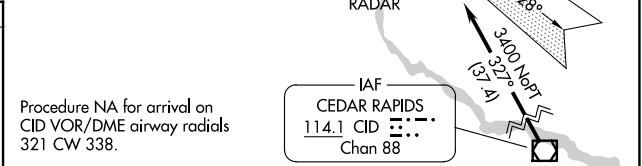


ELEV 873	D	TDZE 868
----------	----------	----------



HIRL Rwy 12-30
MIRL Rwy 18-36
REIL Rwys 18 and 36

FAF to MAP 4.1 NM					
Knots	60	90	120	150	180
Min:Sec	4:06	2:44	2:03	1:38	1:22



CATEGORY	A	B	C	D
S-LOC 30	1240-¾ 372 (400-¾)			
CIRCLING	1360-1 487 (500-1)	1400-1 527 (600-1)	1480-1¾ 607 (700-1¾)	1600-2¼ 727 (800-2¼)

NC-3, 02 OCT 2025 to 30 OCT 2025

NC-3, 02 OCT 2025 to 30 OCT 2025